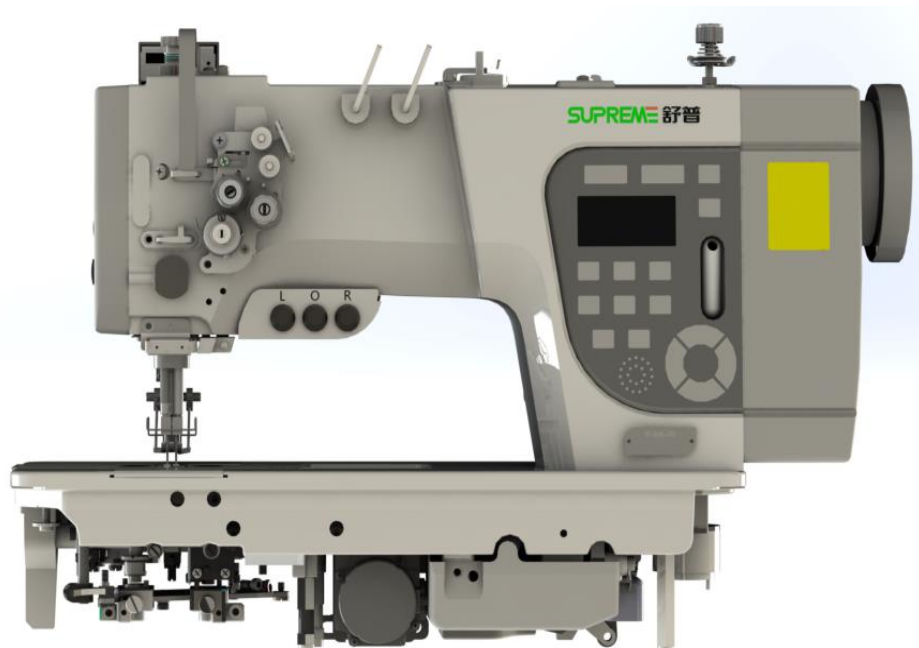


Q3S

零件手册
PARTS BOOK

双针双步进平缝机 TWIN NEEDLE STITCHER



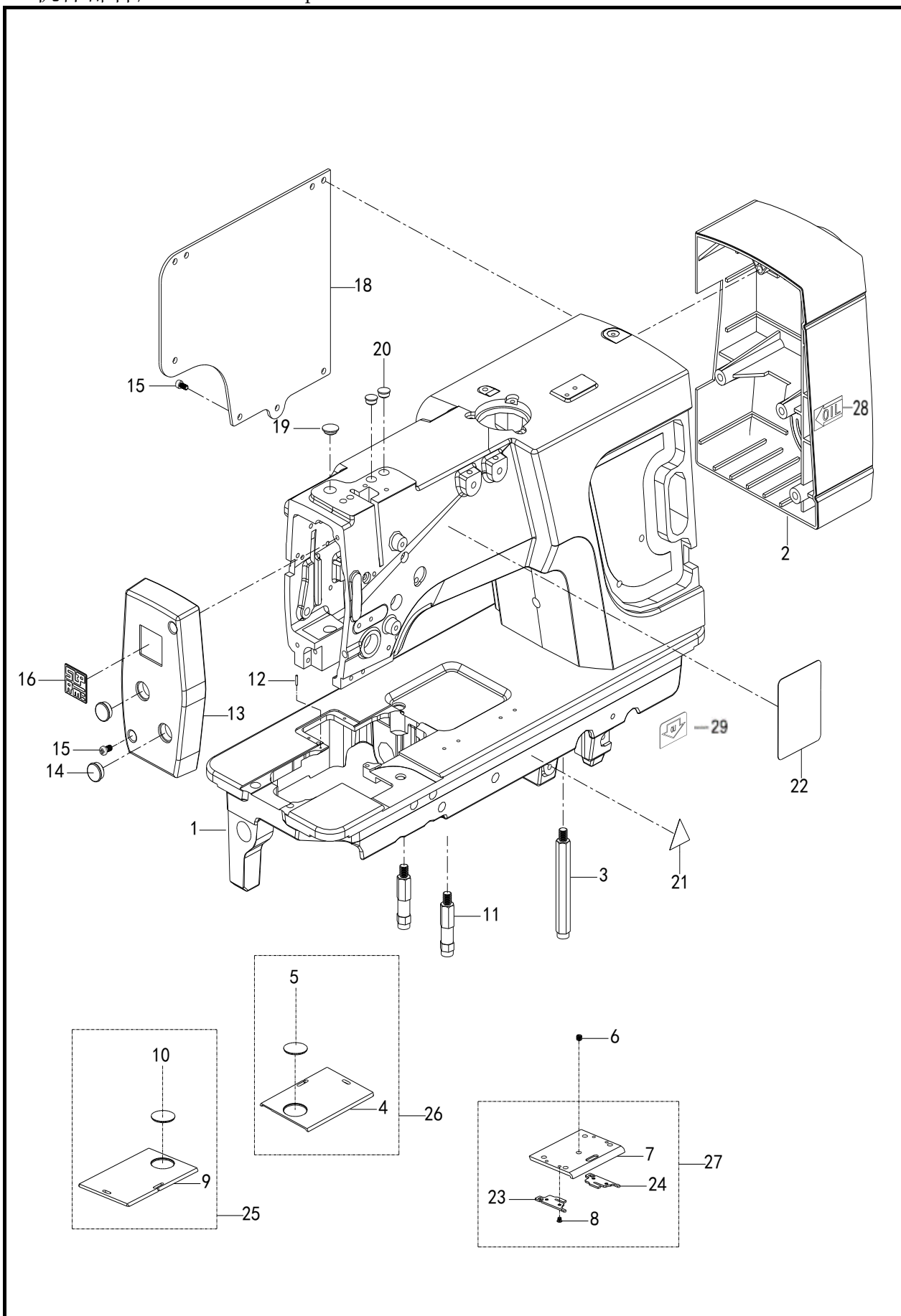
舒普智能技术股份有限公司
SUPREME INTELLIGENT TECHNOLOGY CO. LTD
浙江宁波鄞州区金源路728号
Add: NO. 728, Jinyuan Rd, Ningbo 315100, China.

目 录

catalogue

1 机体部件/Body components.....	1
2 上轴装置/Upper shaft device.....	3
3-1 针杆摆动装置（普通款） /Needle lever oscillating device(common)	5
3-2 针杆摆动装置（分离款） /Needle lever oscillating device (separate)	7
3-3 针杆切换部件/Needle bar switching unit	9
4 压脚装置/Foot presser	11
5 送布装置/Cloth feeder.....	13
6 倒缝装置/Black seam device.....	17
7 送布轴装置/Feed shaft device.....	19
8 旋梭装置/rotary hook mechanism.....	21
9 针位装置/Gauge parts.....	23
10 下轴装置/Lower shaft device.....	23
11-1 供油润滑装置（普通款） /Oil supply lubrication device (ordinary)	25
11-2 供油润滑装置（分离款） /Oil supply lubrication device (separate).....	29
12 穿线装置/Threading device.....	33
13 绕线装置/Winding device.....	35
14 剪线装置/Wire cutting device.....	37
15 扫线装置/Wire sweep device(optional).....	41
16 电控装置/Electronic control unit.....	43
17 油盘装置/Oil pan assembly.....	45
18 线夹装置/Wire clamp device.....	47

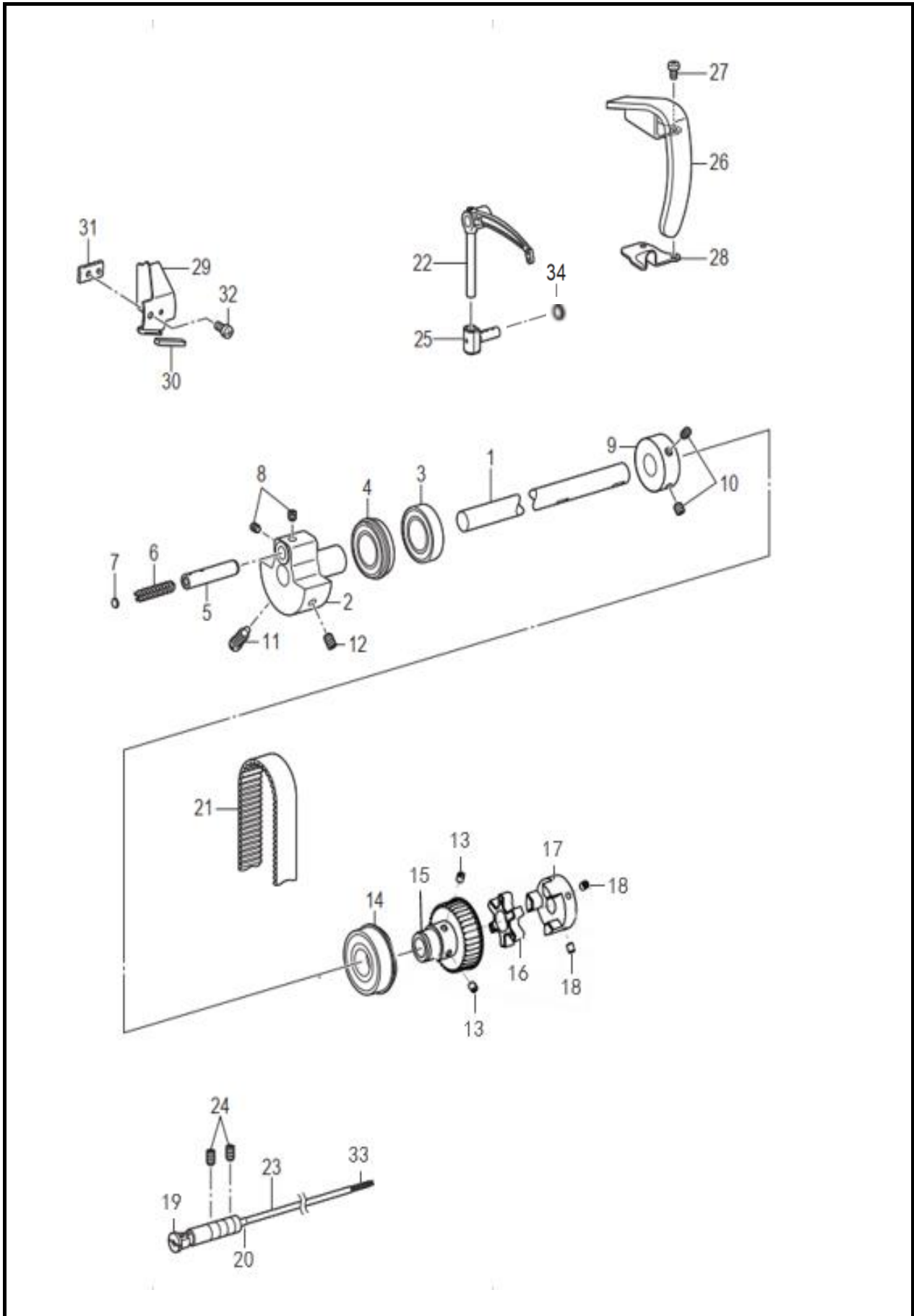
1. 机体部件/Airframe component



1. 机体部件/Airframe component

序号 NO.	编号 Part NO.	参考编号 Ref.Part NO.	名称	Name	数量 Amt.		备注
					403	405	
1	51827120		机壳组件	Housing assembly	1	1	845S/875S
	51827130		机壳组件	Housing assembly	1	1	842S/872S
2	51825031		后罩壳	Rear cover shell	1	1	
3	51820020		脚柱 L M8X104	Foot post L M8X104	1	1	
4	51820030		推板 RA	Push-plate RA	1	1	
5	51820040		推板窗	Sliding plate window	1	1	
6	51822600		紧定螺钉 SM5.16X4	Set screw SM5.16X4	1	1	
7	51820050		推板 F	Push plate F	1	1	
8	51822610		螺钉 SM3.18X4	Screw SM3.18X4	4	4	
9	51820080		推板 LA	Push plate	1	1	
10	51820040		推板窗	Sliding plate window	1	1	
11	51820090		脚柱 S M8X59	Pin S M8X59	2	2	
12	51820100		定位销	Locating pin	1	1	
13	51822520		面板	Panel	1	1	842S/872S
	51826590		面板	Panel	1	1	845S/875S
14	10100140		橡皮塞 15.5	Rubber plug 15.5	2	2	
15	00705105		十字盘头螺钉 M5X10	Screw M5X10	9	9	
16	10865430		中性号牌 (绿底)	Neutral license plate	1	1	
18	51825032		后窗板	Side panel cover	1	1	
19	13100340		橡皮塞 12.5	Rubber Plug 12.5	1	1	
20	10100030		橡皮塞 10.5	Rubber Plug 10.5	2	2	
21	51823390		三角警示牌	The triangle sign	1	1	
22	51823400		安全指示牌	Safety sign	1	1	
23	51820060		推板 FL	Push plate FL	1	1	
24	51820070		推板 FR	Push-plate FR	1	1	
25	51829020		推板LA组件	Push plate LA	1	1	
26	51829010		推板RA组件	Push-plate RA	1	1	
27	51829030		推板F组件	Push plate F assembly	1	1	
28	52002090		标贴	label	1	1	
29	10416060		注油标识	Oil injection label	1	1	

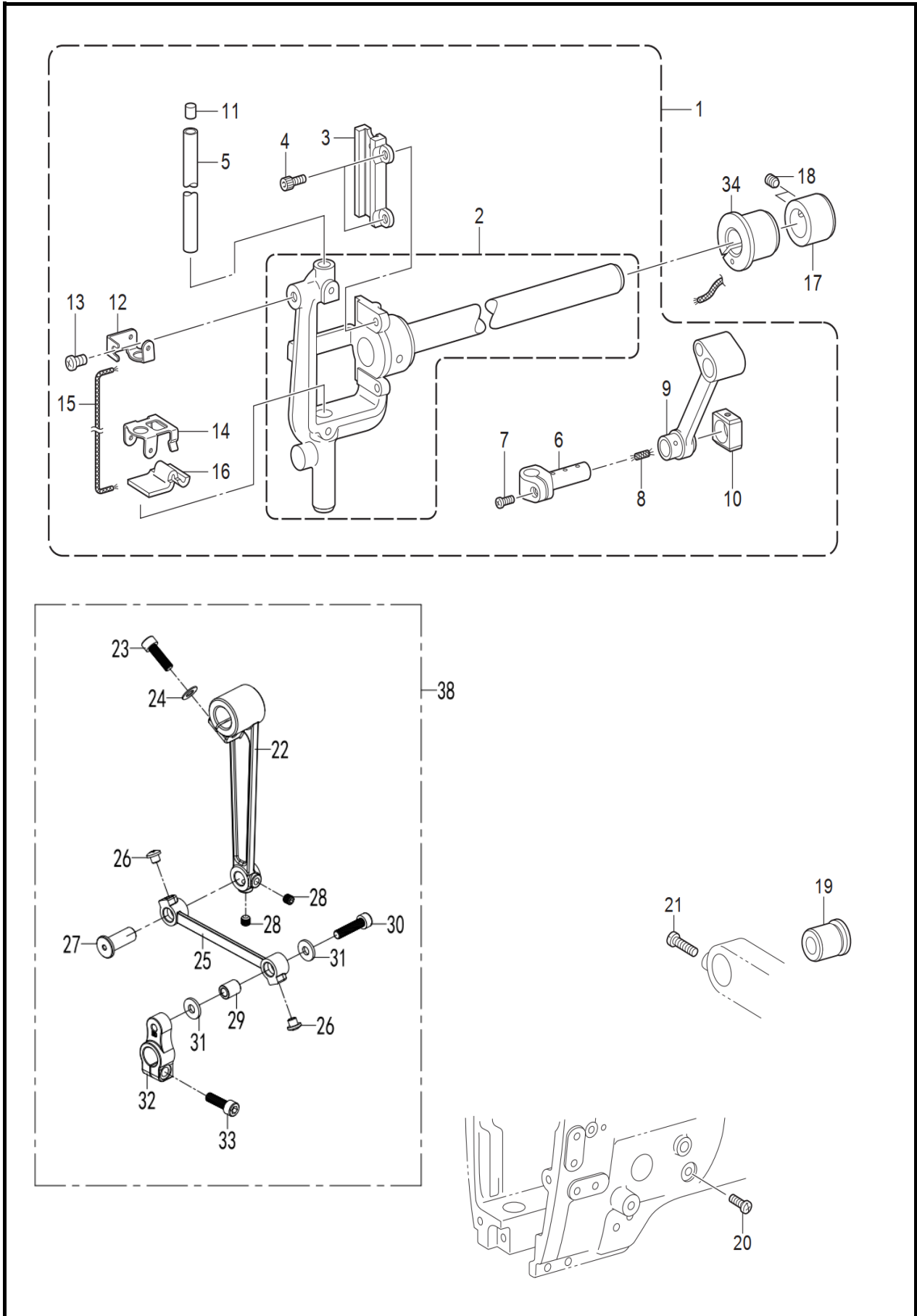
2. 上轴装置/Upper shaft device



2. 上轴装置/Upper shaft device

序号 NO.	编号 Part NO.	参考编号 Ref.Part NO.	名称	Name	数量 Amt.		备注
					403	405	
1	51820220		上轴	Upper shaft	1	1	
2	51820210		挑线杆曲柄	Wire rod crank	1	1	842C/872C
	51825590		挑线杆曲柄	Wire rod crank	1	1	845C/875C
3	00160040		轴承 6004ZZ	Bearing 6004ZZ	1	1	
4	10418500		轴承 6004ZZNR	Bearing 6004ZZNR	1	1	
5	51820200		针杆曲柄轴	Needle bar crankshaft	1	1	
6	51823430		油线 L=60	Oil line L=60	1	1	
7	51820190		油线盖	Oil line cover	1	1	
8	00806061		紧定螺钉 M6X6X0.75	Tightening screw	2	2	
9	51820250		绕线驱动轮	Winding drive wheel	1	1	
10	02000009		紧定螺钉 M6X6	Tightening screw	2	2	
11	02000151		一字平头螺钉 M8X14	Flat head screw	1	1	
12	51822660		紧定螺钉 M6X10X0.75	Tightening screw	1	1	
13	00806080		紧定螺钉 M6X8	Tightening screw	2	2	
14	30180890		轴承 6005DDNR	Bearing 6005DDNR	1	1	
15	51820270		同步轮	timing pulley	1	1	
16	51820130		联接圈	Connecting Circle	1	1	
17	51820140		上轴联轴器	Upper shaft coupling	1	1	
18	00806100		紧定螺钉 M6X10	Tightening screw	2	2	
19	10100310		挑线杆支撑轴	Wire pole support	1	1	
20	51820180		挑线杆支撑轴油管	Pick up pole support	1	1	
21	51822670		同步皮带	synchronous belt	1	1	
22	51820280		挑线杆组件 3#	Pick up pole	1	1	842D-403/842D-405
	51824520		挑线杆组件 6#	Pick up pole	1	1	872D
	51824530		挑线杆组件 5#	Pick up pole	1	1	845D/875D
23	51823420		维尼龙油管 L=200	Velcro tubing L=200	1	1	
24	00806100		紧定螺钉 M6X10	Tightening screw	2	2	
25	51820290		挑线杆接头滑块组件 2	Wire rod joint slider	1	1	
26	51820150		挑线杆防护罩	Wire pole protective	1	1	
27	00705080		螺钉 M5X8	Screw M5X8	2	2	
28	51820160		防尘盖	dust cover	1	1	
29	51820310		遮掩板	Cover board	1	1	842D/872D
	51825670		遮掩板	Cover board	1	1	845D/875D
30	51823440		油毡	linoleum	1	1	
31	51820300		遮掩板支座	Cover plate support	1	1	
32	00705080		螺钉 M5X8	Screw M5X8	1	1	
33	51823410		棉油线 L=300	Cotton oil thread	1	1	
34	51827730		油线盖	Oil line cover	1	1	

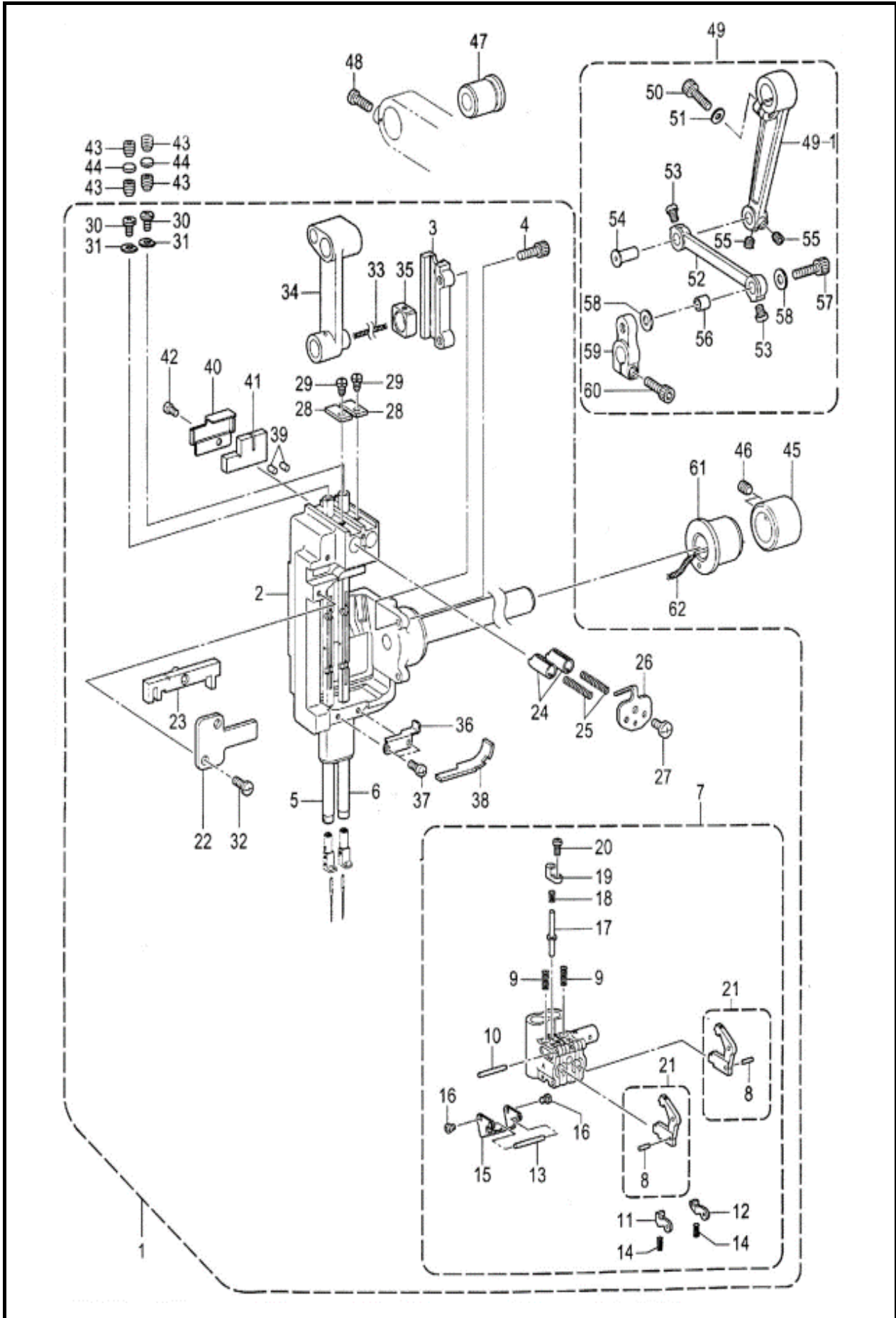
3-1. 针杆摆动装置(普通款) / Needle lever oscillating device(common)



3-1. 针杆摆动装置(普通款) /Needle lever oscillating device(common)

序号 NO.	编号 Part NO.	参考编号 Ref.Part NO.	名称	Name	数量 Amt.		备注
					403	405	
1	51829040		针杆架组件	Needle frame	1	1	
2	51820380		针杆架组件	Needle frame	1	1	
3	51820480		滑块槽	Slide slot	1	1	
4	01204100		螺栓 M4X10	Bolt M4X10	2	2	
5	51820330		针杆	needle bar	1	1	
6	51820450		针杆抱箍	Needle rod clamp	1	1	
7	51822730		螺钉 M3.5X9.5	Screw M3.5X9.5	1	1	
8	51823120		棉油线 L=50	Cotton oil thread	1	1	
9	51820440		针杆曲柄连杆	Needle bar, crank,	1	1	
10	51820430		角滑块	Corner slider	1	1	
11	51820320		针杆塞	Needle plug	1	1	
12	51820470		油毡上支架U	Oil felt bracket U	1	1	
13	00705065		螺钉 M5X6	Screw M5X6	1	1	
14	51820460		油毡下支架 D	Oil felt lower bracket	1	1	
15	51823460		粘胶油线 L=200	Adhesive oil line	1	1	
16	51823450		油毡	linoleum	1	1	
17	51820350		紧圈 16	Tight ring 16	1	1	
18	00806061		紧定螺钉 M6X6X0.75	Tightening screw	2	2	
19	51820360		摆动轴轴套 R	Swing shaft sleeve R	1	1	
20	00705080		螺钉 M5X8	Screw M5X8	1	1	
21	01606160		螺栓 M6X16	Bolt M6X16	1	1	
22	51820370		针杆摆动连杆	Needle bar swing link	1	1	
23	01206200		螺栓 M6X20	Bolt M6X20	1	1	
24	00506070		平垫圈 6	Flat Washer 6	1	1	
25	51820400		针杆摆动杆	Needle bar swing rod	1	1	
26	51822700		螺钉 M6X5	Screw M6X5	2	2	
27	51820390		摆动连杆销	Swing connecting rod	1	1	
28	02000009		紧定螺钉 M6X6	Tightening screw	2	2	
29	51820410		摆动连杆轴套	Swing connecting rod	1	1	
30	01206251		螺栓 M6X25	Bolt M6X25	1	1	
31	51822720		轴向垫圈 6.2	Axial washer 6.2	2	2	
32	51820420		针杆摆动臂	Needle bar swing arm	1	1	
33	01206200		螺栓 M6X20	Bolt M6X20	1	1	
34	51820340		轴套 L	Shaft sleeve L	1	1	
35	51820490		针夹	needle clamp	1	1	
36	02000153		螺钉 SM3.57X4	Screw SM3.57X4	2	2	
37	51822760		机针 DPX5... (#22)	Needle DPX5... (#	2	2	
	10100420		机针 DPX5... (#14)	Needle DPX5... (#	2	2	
38	51829320		针杆摆动连杆组件	Needle bar swing	1	1	

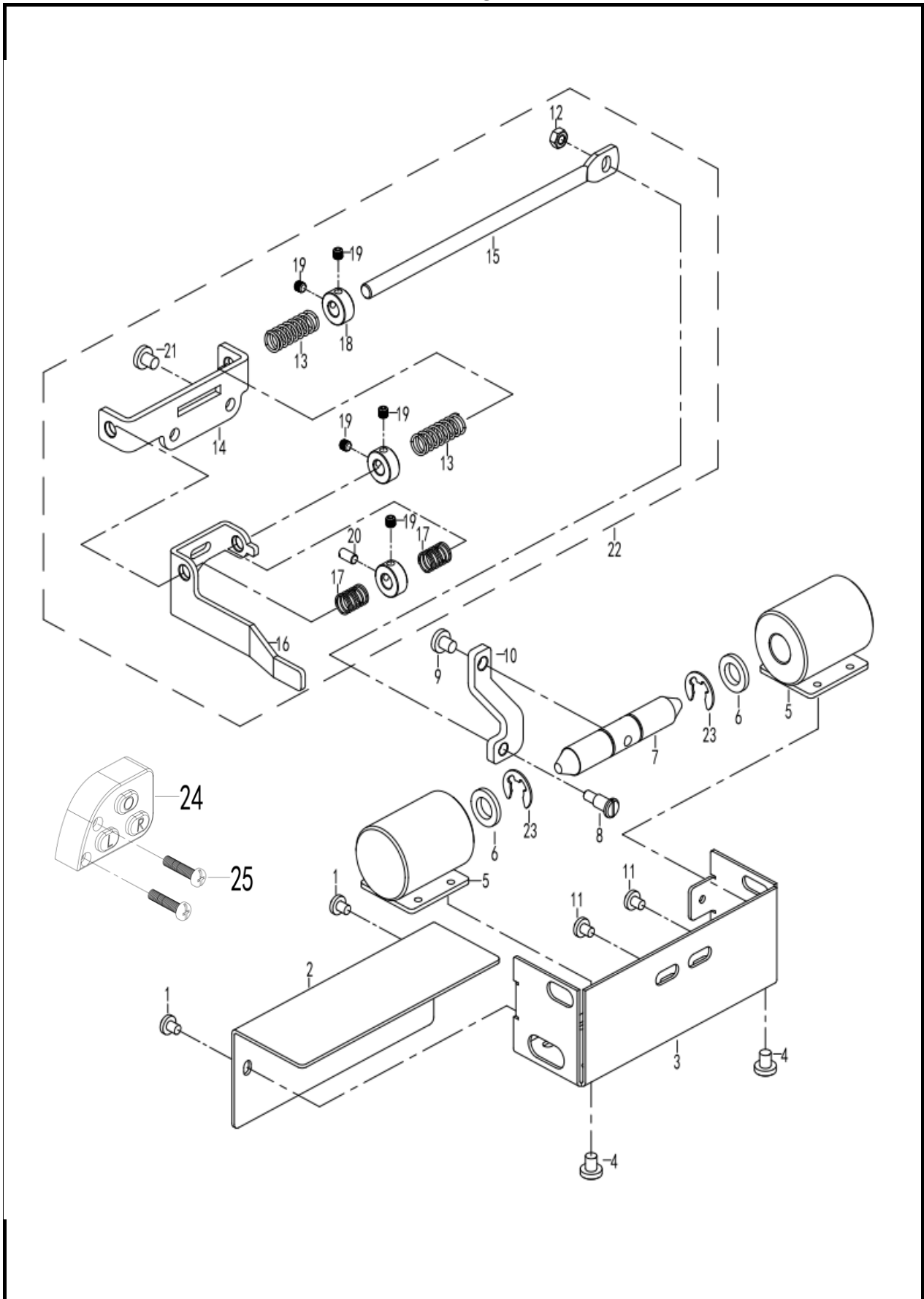
3-2. 针杆摆动装置 (分离款) / Needle lever oscillating device (separate)



3-2. 针杆摆动装置（分离款）/Needle lever oscillating device (separate)

序号 NO.	编号 Part NO.	参考编号 Ref.Part NO.	名称	Name	数量 Amt.		备注
					403	405	
1	51825610		针杆架组件	Needle frame	1	1	
2	51825610		针杆架组件	Needle frame	1	1	
3	51820480		滑块槽	Slide slot	1	1	
4	01204100		螺栓 M4X10	Bolt M4X10	2	2	
5	51826400		针杆组件L	Needle bar assembly	1	1	
6	51826410		针杆组件R	Needle bar assembly	1	1	
7	51826420		针杆抱箍组件	Needle rod clamp	1	1	
8	51826120		销1.5X5.8	Sell 1.5X5.8	2	2	
9	51826130		离合器摆杆弹簧	Clutch swing rod	2	2	
10	51826140		销2X15.8	Selling 2X15.8	1	1	
11	51826150		止动块L	Stop block L	1	1	
12	51826160		止动块R	Stop block R	1	1	
13	51826170		销2X17.8	Selling 2X17.8	1	1	
14	51826180		推动板止动簧	Push the plate stop	1	1	
15	51826190		弹簧支架	spring support	1	1	
16	51826200		螺钉M2.6X3	Screw M2.6X3	2	2	
17	51826210		销	sales	1	1	
18	51826220		离合销弹簧	Clutch pin spring	1	1	
19	51826230		离合销盖	Clutch pin cover	1	1	
20	51826240		螺钉M2.6X5	Screw M2.6X5	1	1	
21	51826430		离合器摆杆组件	Clutch swing rod	2	2	
22	51826250		滑块导向板	Slide guide plate	1	1	
23	51826440		滑块组件	Slider component	1	1	
24	51826260		针杆定位	Needle positioning	2	2	
25	51826270		针杆止动器弹簧	Needle bar stopper	2	2	
26	51826280		弹簧盖	Spring cover	1	1	
27	51826290		螺钉 M3.5X6	Screw M3.5X6	1	1	
28	51826300		针杆定位块	Needle positioning	2	2	
29	51826310		螺钉SM3.5	Screw SM3.5	2	2	
30	51826290		螺钉 M3.5X6	Screw M3.5X6	2	2	
31	51826320		垫圈	washer	2	2	
32	51826330		螺钉M3.5X8	Screw M3.5X8	1	1	
33	51823120		油线L=50	Oil line L=50	1	1	
34	51826340		针杆曲柄连杆（分离款）	Needle bar crank	1	1	
35	51826350		角滑块（分离款）	Corner slider	1	1	
36	51826360		油毡下支架D（分离款）	Oil felt lower bracket	1	1	
37	51826290		螺钉 M3.5X6	Screw M3.5X6	2	2	
38	51825620		油毡	linoleum	1	1	
39	51825630		油毡	linoleum	2	2	
40	51826370		油毡夹	Oil felt clip	1	1	
41	51825640		油毡	linoleum	2	2	
42	51825740		螺钉M3.5X5	Screw M3.5X5	1	1	
43	51826380		紧定螺钉 M8X8	Tightening screw	4	4	
44	51825660		衬垫5.3	Pad 5.3	2	2	
45	51820350		紧圈 16	Tight ring 16	1	1	
46	00806061		紧定螺钉 M6X6X0.75	Tightening screw	2	2	
47	51820360		摆动轴轴套R	Swing shaft sleeve R	1	1	
48	01606160		螺栓 M6X16	Bolt M6X16	1	1	
49	51820370		针杆摆动连杆	Needle bar swing link	1	1	
49-1	51829320		针杆摆动连杆组件	Needle bar swing	1	1	
50	01206200		螺栓 M6X20	Bolt M6X20	1	1	
51	00506070		平垫圈6	Flat washer 6	1	1	
52	51820400		针杆摆动杆	Needle bar swing rod	2	2	
53	51822700		螺钉M6X5	Screw M6X5	1	1	
54	51820390		摆动连杆销	Swing connecting rod	1	1	
55	02000009		紧定螺钉 M6X6	Tightening screw	1	1	
56	51820410		摆动连杆轴套	Swing connecting rod	1	1	
57	01206251		螺栓 M6X25	Bolt M6X25	2	2	
58	51822720		轴向垫圈6.2	Axial washer 6.2	1	1	
59	51820420		针杆摆动臂	Needle bar swing arm	1	1	
60	01206200		螺栓 M6X20	Bolt M6X20	1	1	
61	51820340		轴套L	Shaft sleeve L	1	1	

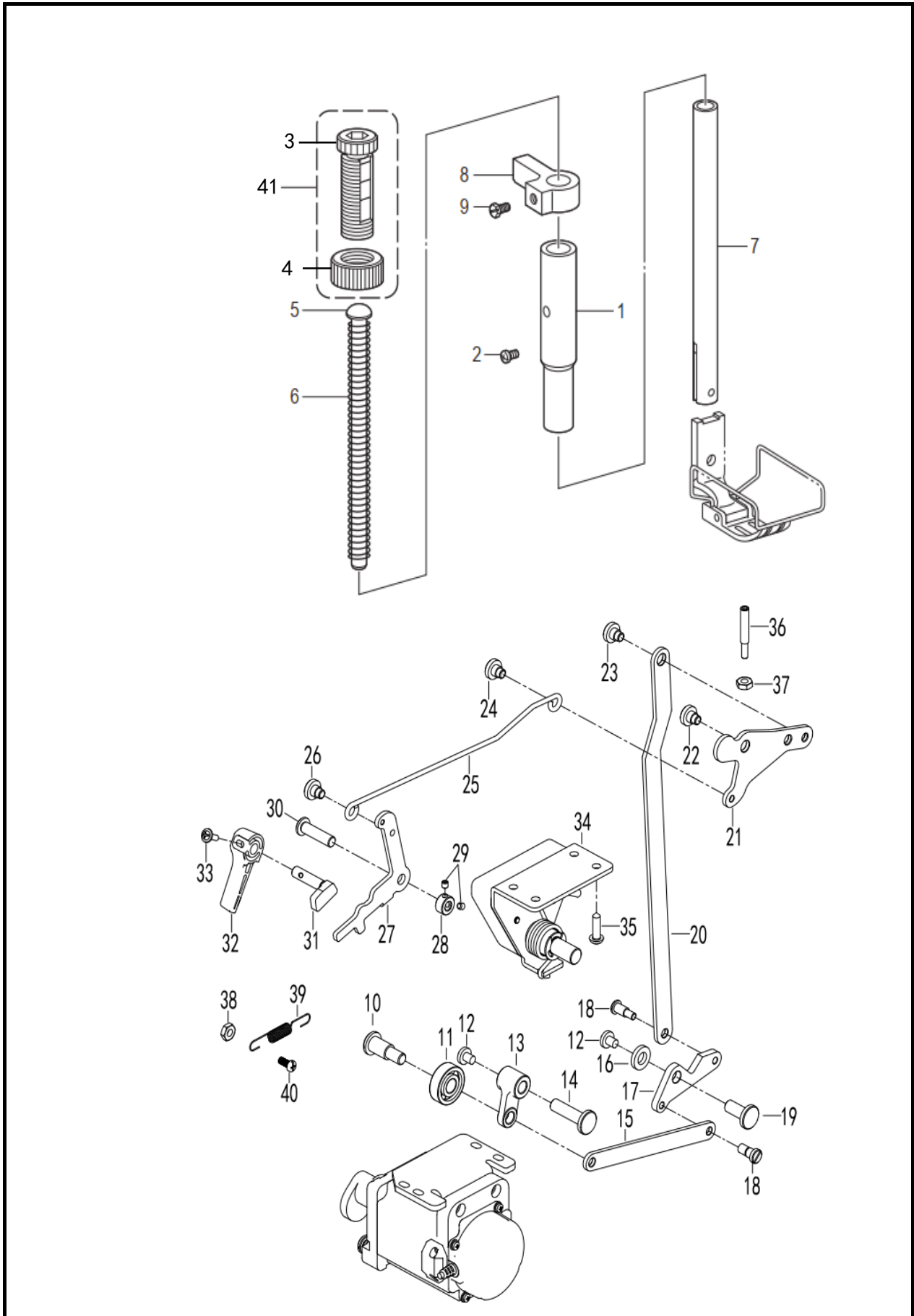
3-3. 针杆切换部件/Needle bar switching unit



3-3. 针杆切换部件/Needle bar switching unit

序号 NO.	编号 Part NO.	参考编号 Ref.Part NO.	名称	Name	数量 Amt.		备注
					403	405	
1	52094406		螺钉 M4X6	Screw M4X6	2	2	
2	51822019		分离电磁铁安装盖	Separate	1	1	
3	51825047		电磁铁罩	Electromagnetic cover	1	1	
4	52094406		螺钉 M4X6	Screw M4X6	8	8	
5	51825046		分离电磁铁	Separate	2	2	
6	51825053		缓冲垫圈	Buffer gasket	2	2	
7	51820551		电磁铁芯	Electromagnetic iron	1	1	
8	51825054		轴位螺钉M4	Axis screw M4	1	1	
9	00705105		螺钉 M5X10	Screw M5X10	1	1	
10	51820471		连杆B	Connecting rod B	1	1	
11	00705105		螺钉 M5X10	Screw M5X10	2	2	
12	00404030		六角螺母M4X3	Hexagonal nut M4X3	1	1	
13	51825870		弹簧	spring	2	2	
14	51825880		滑轴架	Sliding axle frame	1	1	
15	51825890		滑动轴	Sliding axis	1	1	
16	51825900		支架板	bracket plate	1	1	
17	51825910		弹簧	spring	2	2	
18	51825920		紧圈	Tight Circle	3	3	
19	51825930		紧定螺钉 M4X4	Tightening screw	5	5	
20	51825940		导向螺钉	Guiding screw	1	1	
21	51825800		螺钉 M5X8	Screw M5X8	2	2	
22	51829390		滑轴架组件	Sliding axle frame	1	1	
23	51825055		轴用挡圈E12	Axis retaining ring	2	2	
24	51825057		按钮盒组件	Button box	1	1	
25	00704200		十字盘头螺钉M4X20	Cross pan head screw	2	2	

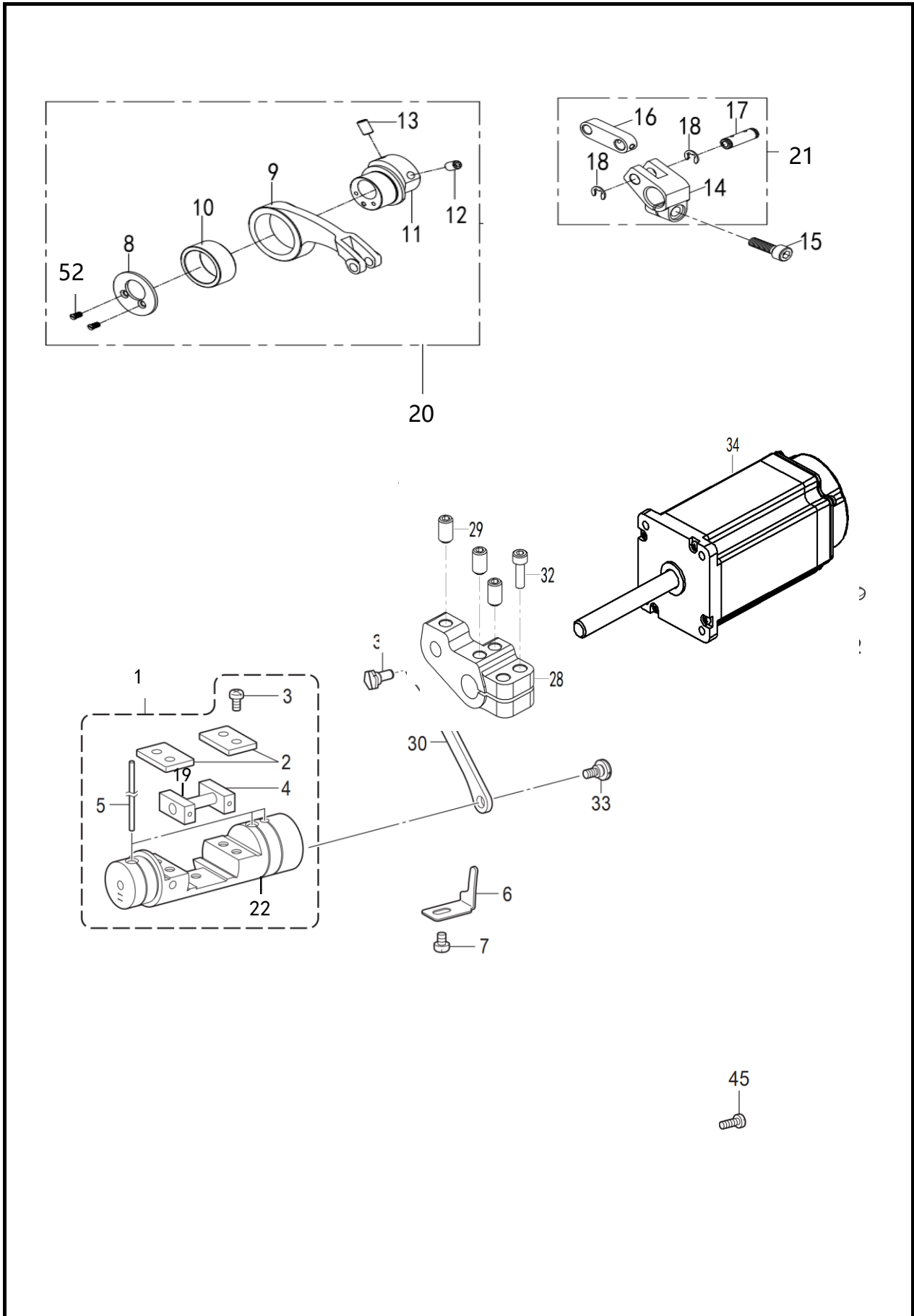
4. 压脚装置/Foot presser



4. 压脚装置/Foot presser

序号 NO.	编号 Part NO.	参考编号 Ref.Part NO.	名称	Name	数量 Amt.		备注
					403	405	
1	51820590		压杆轴套	Compression rod	1	1	
2	00705080		螺钉 M5X8	Screw M5X8	1	1	
3	51827670		调压螺母 M14X1	Pressure regulating	1	1	
4	51827680		调压螺栓 M14X1	Pressure regulating	1	1	
5	51820620		弹簧导杆	Spring guide rod	1	1	
6	51820610		压紧弹簧	Tighten the spring	1	1	
7	51820650		压杆	compression rod	1	1	
8	51820600		压杆抱箍	Compression rod	1	1	
9	51822810		外六角螺栓 M6X10	Outer hexagon bolt	1	1	
10	13104150		轴位螺钉φ8	Axis screw with a	1	1	
11	00160801		轴承608ZZ	Bearing 608ZZ	1	1	
12	00705125		螺钉 M5X12	Screw M5X12	2	2	
13	51825015		曲柄	crank	1	1	
14	51825019		销轴	pin shaft	1	1	
15	51825021		连杆A	Connecting rod A	1	1	
16	51825026		垫片M8X16X3	Gasket M8X16X3	1	1	
17	51825028		支撑块	support block	1	1	
18	51825059		轴位螺钉M5	Axis screw M5	2	2	
19	51825023		销轴	pin shaft	1	1	
20	51825024		连杆B	Connecting rod B	1	1	
21	51825025		膝控提升杠杆	Knee controlled	1	1	
22	51822830		轴位螺钉 M6	Axis screw M6	1	1	
23	50005500		轴位螺钉φ7.94	Axis screw with a	1	1	
24	51822780		轴位螺钉 M5	Axis screw M5	1	1	
25	51820530		膝控连杆	Knee control linkage	1	1	
26	51822780		轴位螺钉 M5	Axis screw M5	1	1	
27	51820550		抬压脚连杆	Lift the foot	1	1	
28	51820540		紧圈 7.24	Tightening ring 7.24	1	1	
29	00805050		紧定螺钉 M5X5	Tightening screw	2	2	
30	51820560		压紧杆提升杠杆销	Pressing rod lifting	1	1	
31	51820580		压杆提升曲柄	Pressure rod lifting	1	1	
32	51820570		抬压脚扳手	Lift foot wrench	1	1	
33	51822800		螺钉 (带垫圈) M3.5X1	Screw (with washer)	1	1	
34	51806270		电子膝靠组件	Electronic knee brace	1	1	
35	02000157		螺钉 ST4.5X20	Screw ST4.5X20	4	4	
36	51822820		调整螺钉 6	Adjust screw 6	1	1	
37	00406031		螺母 M6	Nut M6	1	1	
38	00405380		螺母 M5	Nut M5	1	1	
39	51820520		弹簧	spring	1	1	
40	00705125		螺钉 M5X12	Screw M5X12	1	1	
41	51829420		调压螺母组件	Pressure regulating	1	1	

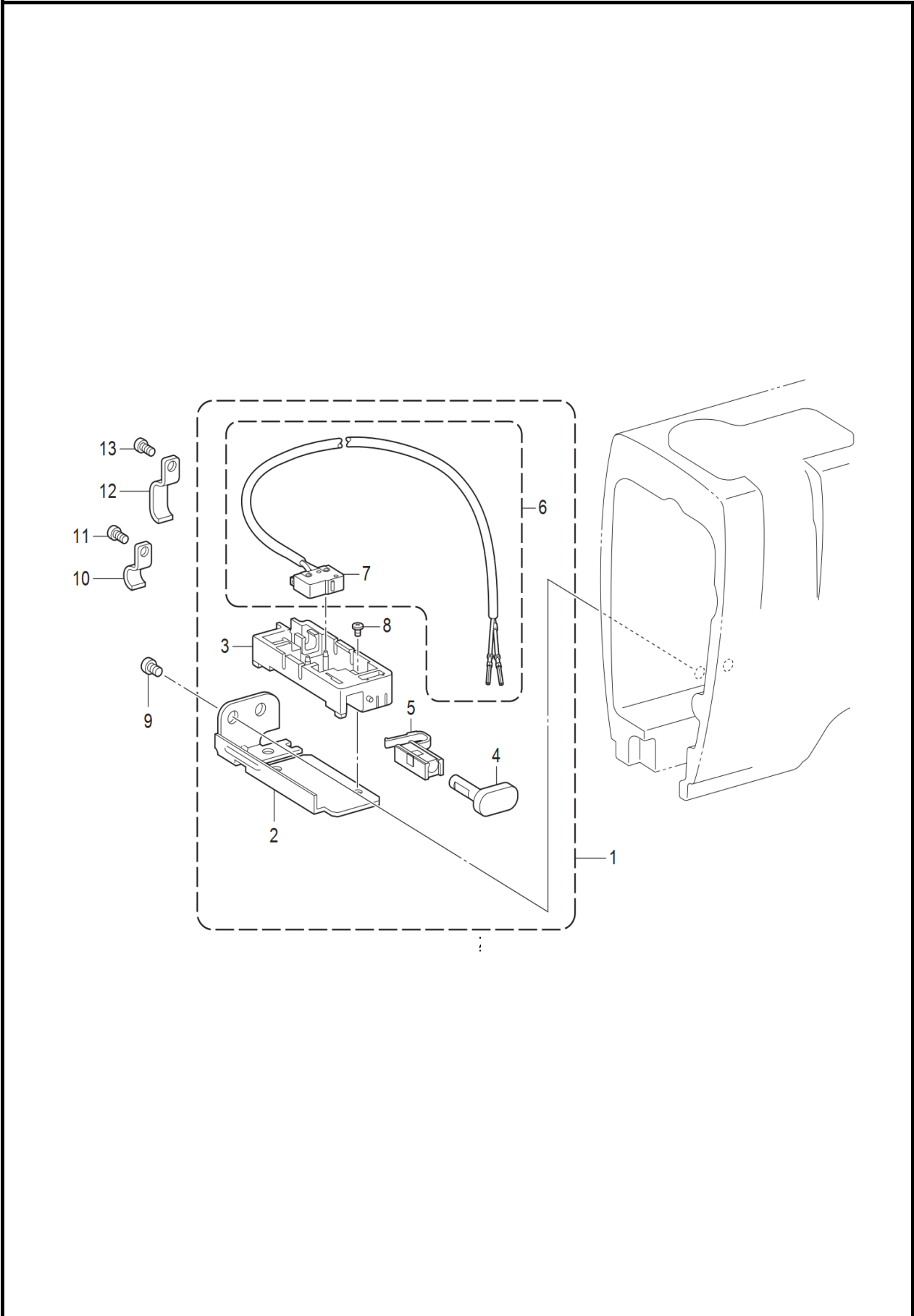
5. 送布装置/Cloth feeder



5. 送布装置/Cloth feeder

序号 NO.	编号 Part NO.	参考编号 Ref.Part NO.	名称	Name	数量 Amt.		备注
					403	405	
1	51829530		切换器11组件	Switcher 11	1	1	
	51829520		切换器9.5组件	Switcher 9.5	1	1	
2	51820700		滑块导向	Slider guidance	2	2	
3	00705105		螺钉 M5X10	Screw M5X10	4	4	
4	51820720		滑块	slider	2	2	
5	51823480		油线 L=60	Oil line L=60	3	3	
6	51820830		切换器定位	Switch positioning	1	1	
7	00706080		螺钉 M6X8	Screw M6X8	1	1	
8	51820870		偏心轮盖板	Eccentric wheel cover	1	1	
9	51820730		送布大连杆	Send large cloth poles	1	1	
10	51820740		滚针轴承	needle roller bearing	1	1	
11	51820750		水平偏心轮 7	Horizontal eccentric	1	1	
	51826070		水平偏心轮 5	Horizontal eccentric	1	1	
12	51822660		紧定螺钉 M6X10X0.75	Tightening screw	1	1	
13	51822850		紧定螺钉 M6X10X0.75	Tightening screw	1	1	
14	51820780		水平送料臂 7	Horizontal feeding	1	1	
	51826050		水平送料臂 5	Horizontal feeding	1	1	
15	01206200		螺栓 M6X20	Bolt M6X20	1	1	
16	51820760		送布小连杆	Small connecting rod	1	1	
17	51820770		送布曲柄轴	Cloth delivery	1	1	
18	00201060		挡圈 E6	Retaining ring E6	2	2	
19	51820710		滑块轴	Slide axis	1	1	
	51829500		水平偏心轮组件5 (宝鼎)	Horizontal eccentric	1	1	
20-21	51829510		水平偏心轮组件7 (宝鼎)	Horizontal eccentric	1	1	
22	51825960		切换器9.5	Switcher 9.5	1	1	842S/845S
	51820690		切换器11	Switcher 11	1	1	872S/875S
28	51820481		连接曲柄	Connect the	1	1	
29	00806101		紧定螺钉 M6X10	Tightening screw	3	3	
30	51820800		切换器连杆	Switch linkage	1	1	
31	51820790		偏心轴	eccentric shaft	1	1	
32	01205160		内六角圆柱头螺钉M5X1	Hexagonal socket	2	2	
33	51822860		轴位螺钉 M6	Axis screw M6	1	1	
34	51825011		倒缝电机	Reverse sewing motor	1	1	

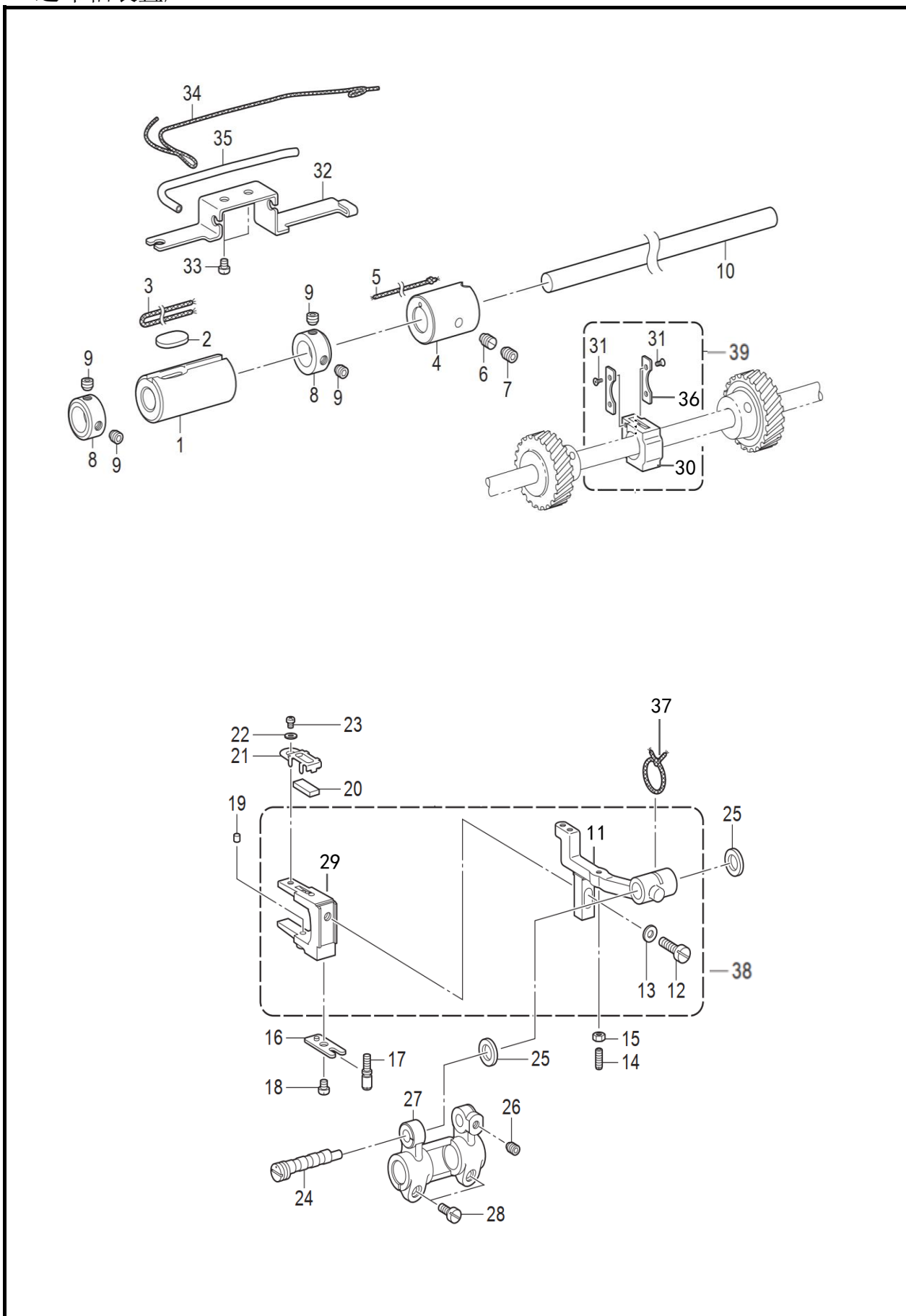
6. 倒缝装置/Black seam device



6. 倒缝装置/Black seam device

序号 NO.	编号 Part NO.	参考编号 Ref.Part NO.	名称	Name	数量 Amt.		备注
					403	405	
1	51824170		倒缝调节器组件	Inverted seam	1	1	
2	51824220		倒缝开关安装架	Inverted seam switch	1	1	
3	51824230		倒缝开关安装架	Inverted seam switch	1	1	
4	51824240		按钮	button	1	1	
5	51824250		倒缝开关弹簧	Inverted seam switch	1	1	
6	51824260		R 开关组件	R switch component	1	1	
7	51824270		微动开关	micro switch	1	1	
8	01503081		螺钉 M3X6	Screw M3X6	1	1	
9	00705065		螺钉 M5X6	Screw M5X6	2	2	
10	51820890		线夹	wire clamp	1	1	
11	00705065		螺钉 M5X6	Screw M5X6	1	1	
12	51820880		线夹	wire clamp	2	2	
13	00705065		螺钉 M5X6	Screw M5X6	1	1	

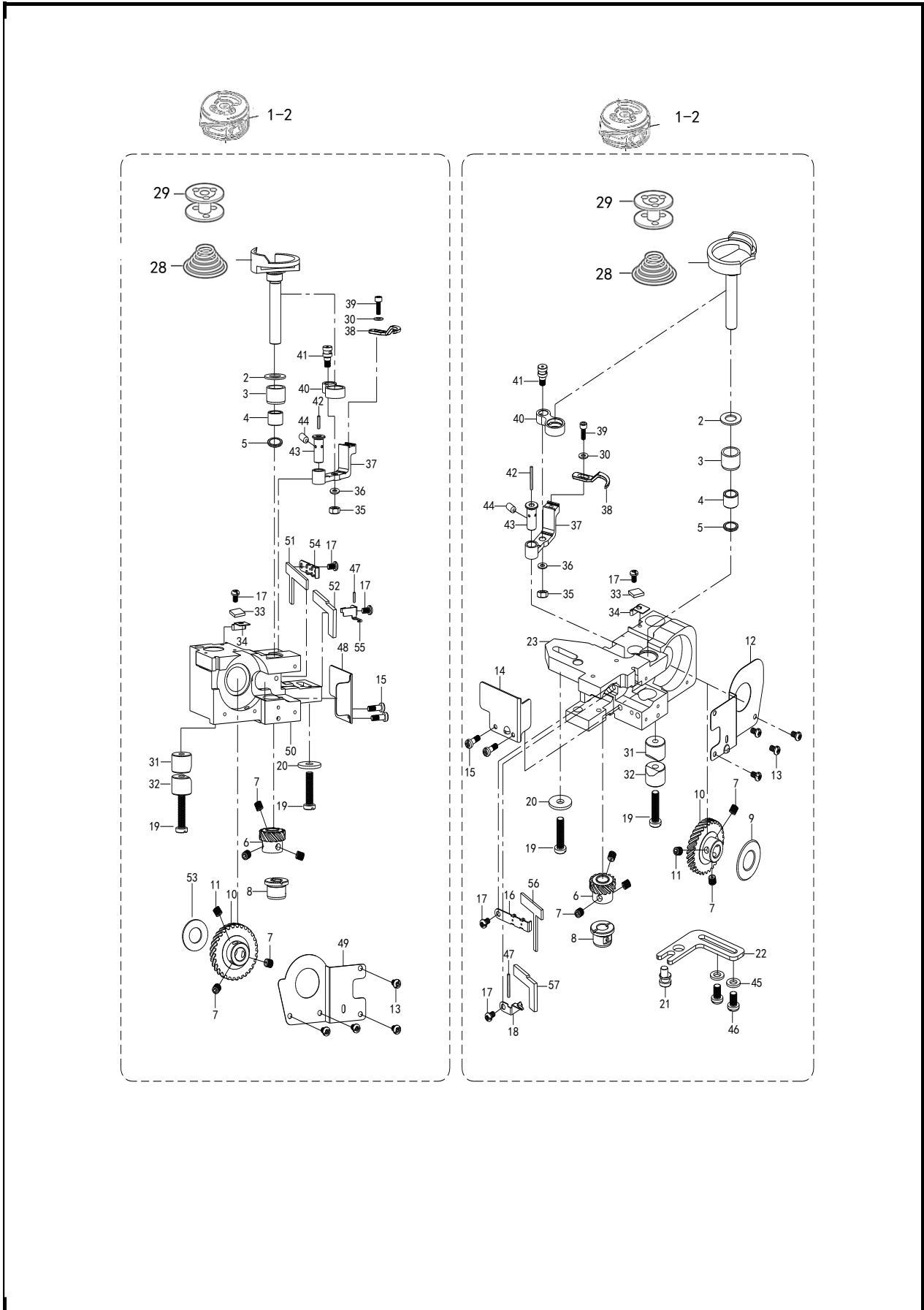
7. 送布轴装置/Feed shaft device



7. 送布轴装置/Feed shaft device

序号 NO.	编号 Part NO.	参考编号 Ref.Part NO.	名称	Name	数量 Amt.		备注
					403	405	
1	51821000		送布轴套 L	Sending cloth sleeve	1	1	
2	51823560		油毡	linoleum	1	1	
3	51823550		棉油线 L=220	Cotton oil thread	1	1	
4	51820980		送布轴套 R	Sending cloth sleeve	1	1	
5	51823540		棉油线 L=250	Cotton oil thread	1	1	
6	00806062		内六角锥端紧定螺钉M6	Hexagonal cone end	1	1	
7	02000009		紧定螺钉 M6X6	Tightening screw	1	1	
8	51820990		紧圈 14	Tight ring 14	2	2	
9	51822940		紧定螺钉 SM6.35X5	Tightening screw	4	4	
10	51821020		送布轴	Feed axis	1	1	
11	51820950		牙架叉支架	Dental fork bracket	1	1	
12	10678040		螺钉 M6X14	Screw M6X14	1	1	
13	00506120		平垫圈 6	Flat Washer 6	1	1	
14	51822950		紧定螺钉 M3.5X12	Tightening screw	1	1	
15	02000076		螺母 M3.5	Nut M3.5	1	1	
16	51821040		开叉板	Fork board	1	1	
17	51821030		调整螺栓	Adjust bolts	1	1	
18	00704065		螺钉 M4X6	Screw M4X6	1	1	
19	51823490		油毡	linoleum	1	1	
20	51823500		油毡	linoleum	1	1	
21	51820960		油毡压架	Oil felt press frame	1	1	
22	00503010		平垫圈 3	Flat washer 3	1	1	
23	01403040		十字盘头螺钉 M3X4	Cross pan head screw	1	1	
24	51821050		牙架轴	Dental frame axis	1	1	
25	51822930		轴向垫圈 8.5	Axial washer 8.5	2	2	
26	02000009		紧定螺钉 M6X6	Tightening screw	1	1	
27	51821010		水平送布台臂	Horizontal fabric	1	1	
28	51826510		螺钉 M5X12	Screw M5X12	2	2	
29	51820930		牙架叉	Tooth rack fork	1	1	
30	51820910		滑块	slider	1	1	
31	10781670		螺钉 M2X4	Screw M2X4	4	4	
32	51820970		油线支架	Oil line bracket	1	1	
33	00704065		螺钉 M4X6	Screw M4X6	2	2	
34	51823510		棉油线 L=400	Cotton oil thread	1	1	
35	10101830		油线软管	Oil line hose	1	1	
36	51820920		滑块挡片	Slide block	2	2	
37	51823530		棉油线 L=200	Cotton oil thread	1	1	
38	51829300		牙架叉组件	Dental fork assembly	1	1	
39	51829350		滑块组件	Slider component	1	1	

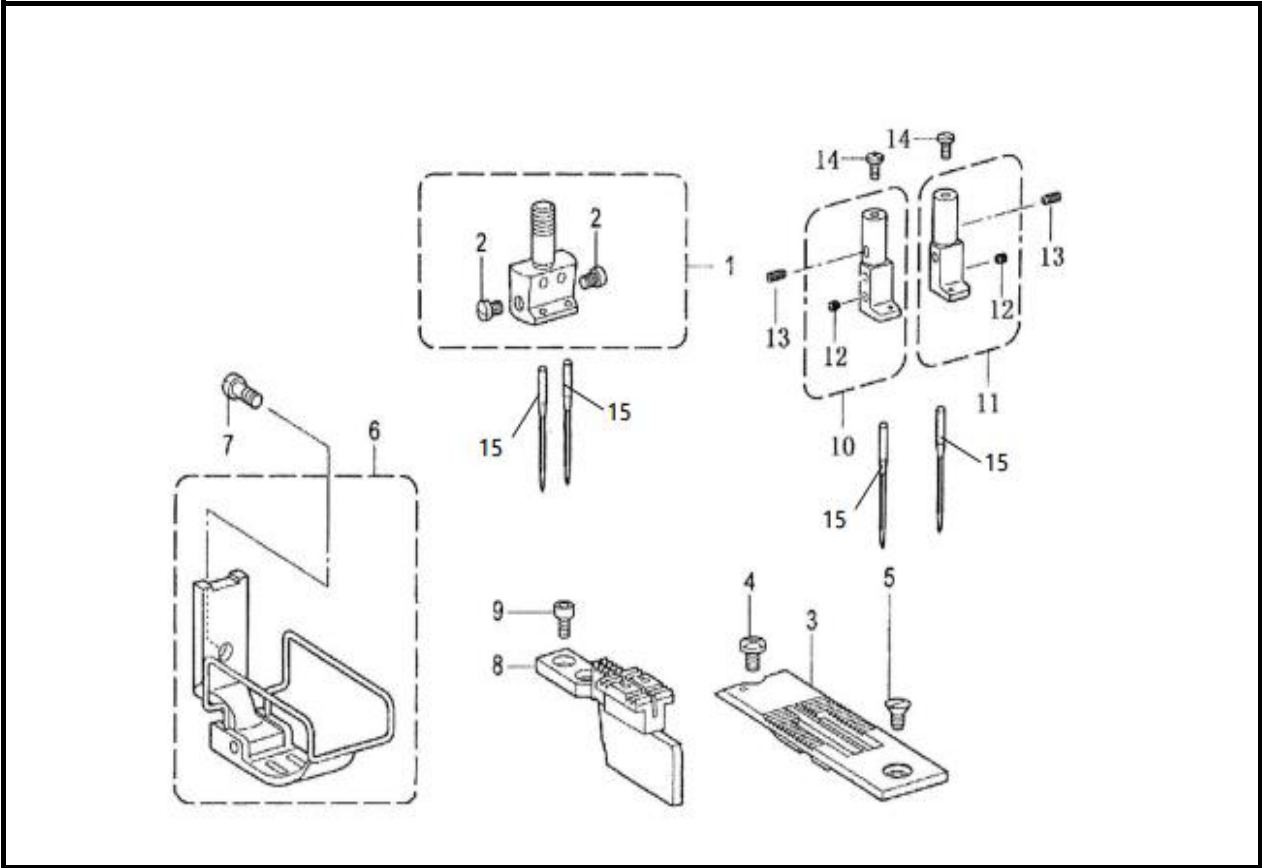
8. 旋梭装置/rotary hook mechanism



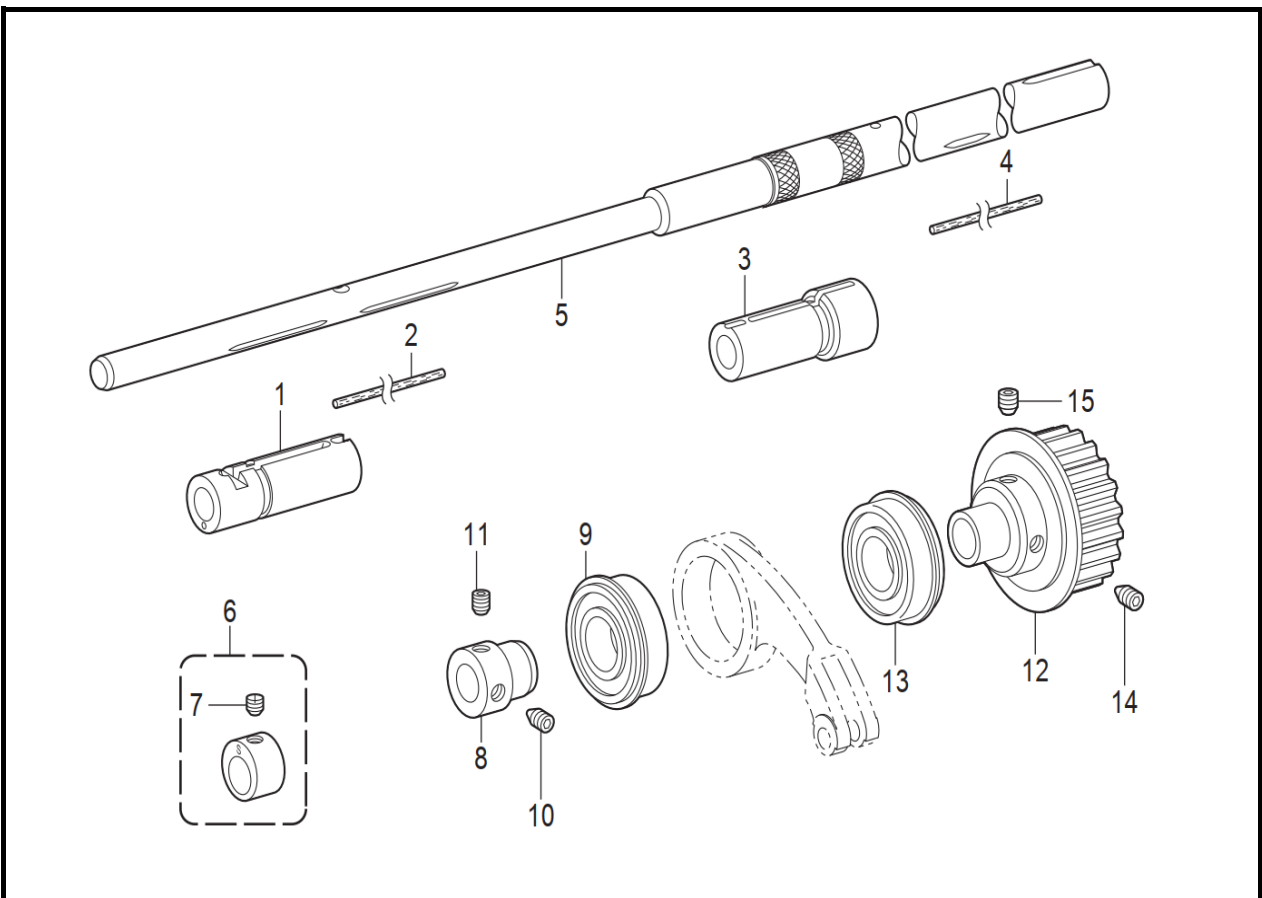
8. 旋梭装置/rotary hook mechanism

序号 NO.	编号 Part NO.	参考编号 Ref.Part NO.	名称	Name	数量 Amt.		备注
					403	405	
1-1	51821060		旋梭组件(HR12-15L(TR	Rotary shuttle	2	2	
1-2	51821070		梭盖 9220(CP-G12CTR	Cover 9220 (CP-	2	2	
2	51822970		轴向垫圈 A (1.2)	Axial washer A (1.2)	2	2	
3	51821080		旋梭轴套 U	Rotary shuttle shaft	2	2	
	51824580		旋梭轴套 U	Rotary shuttle shaft	2	2	
4	51821090		滚针轴承	needle roller bearing	2	2	
5	10101640		止动圈	Stop Ring	2	2	
6	51821110		人字齿轮复合件 B	Composite component	2	2	
7	00806061		紧定螺钉 M6X6X0.75	Tightening screw	10	10	
8	51821120		旋梭轴套 D	Rotary shuttle shaft	2	2	
9	51822980		平垫圈 19	Flat washer 19	1	1	
10	51821130		螺旋齿轮	Helical gear	2	2	
11	51822990		紧定螺钉 M6X6X0.75	Tightening screw	2	2	
12	51821140		旋梭基座盖 L	Spinning shuttle base	1	1	
13	01403040		十字盘头螺钉 M3X4	Cross pan head screw	8	8	
14	51821150		旋梭基座盖 FL	Spinning shuttle base	1	1	
15	00704120		螺钉 M4X12	Screw M4X12	4	4	
16	51821160		油毡支架 UL	Oil felt bracket UL	1	1	
17	00704065		螺钉 M4X6	Screw M4X6	6	6	
18	51821170		油毡支架 DL	Oil felt support DL	1	1	
19	51823000		螺钉 M6X25	Screw M6X25	4	4	
20	00506161		平垫圈6	Flat washer 6	2	2	
21	51821180		调节轴	Adjusting axis	1	1	
22	51821190		调节板	adjustment plate	1	1	
23	51821200		旋梭基座 LC	Spinning shuttle base	1	1	
	51824600		旋梭基座 LC (小梭)	Spinning shuttle base	1	1	
28	51821210		防空转弹簧	Anti air rotating	2	2	
29	51821220		梭芯	bobbin	2	2	
	51824590		梭芯	bobbin	2	2	
30	00503040		平垫圈 4	Flat washer 4	2	2	
31	51821230		套管 A	Sleeve A	2	2	
32	51821240		套管 B	Sleeve B	2	2	
33	51823570		油毡	linoleum	2	2	
34	51821250		油毡架	Oil felt frame	2	2	
35	00405380		螺母 M5	Nut M5	2	2	
36	00505000		弹簧垫圈 5	Spring washer 5	2	2	
37	51821260		分线钩杆	Branch hook rod	2	2	
	51825970		分线钩杆	Branch hook rod	2	2	
38	51821270		分线钩	Dividing hook	2	2	
39	51823010		螺栓 SM3.57X9	Bolt SM3.57X9	2	2	
40	51821280		分线钩连杆	Branch hook	2	2	
	51825980		分线钩连杆	Branch hook	2	2	
41	51821290		分线钩连杆轴	Branch hook	2	2	
42	51823580		油线 L=100	Oil line L=100	2	2	
43	51821300		分线钩杆短轴	Split hook rod short	2	2	
44	00805101		紧定螺钉 M5X10	Tightening screw	2	2	
45	00506080		平垫圈 6	Flat Washer 6	2	2	
46	00706100		螺钉 M6X10	Screw M6X10	2	2	
47	51823590		油线 L=150	Oil line L=150	2	2	
48	51821310		旋梭基座盖 FR	Rotary shuttle base	1	1	
49	51821320		旋梭基座盖 R	Rotary shuttle base	1	1	
50	51821330		旋梭基座 RC	Rotary shuttle base	1	1	
	51824630		旋梭基座 RC	Rotary shuttle base	1	1	
51	51823600		油毡UL	Oil felt UL	2	2	
52	51823610		油毡DL	Oil felt DL	2	2	
53	10380250		平垫圈 12	Flat Washer 12	1	1	
54	51821340		油毡支架 UR	Oil felt bracket UR	1	1	
55	51821350		油毡支架 DR	Oil felt bracket DR	1	1	
56	51826620		油毡UR	Oil felt UR	1	1	
57	51826630		油毡DR	Oil felt DR	1	1	

9. 针位装置/Gauge parts



10. 下轴装置/Lower shaft device



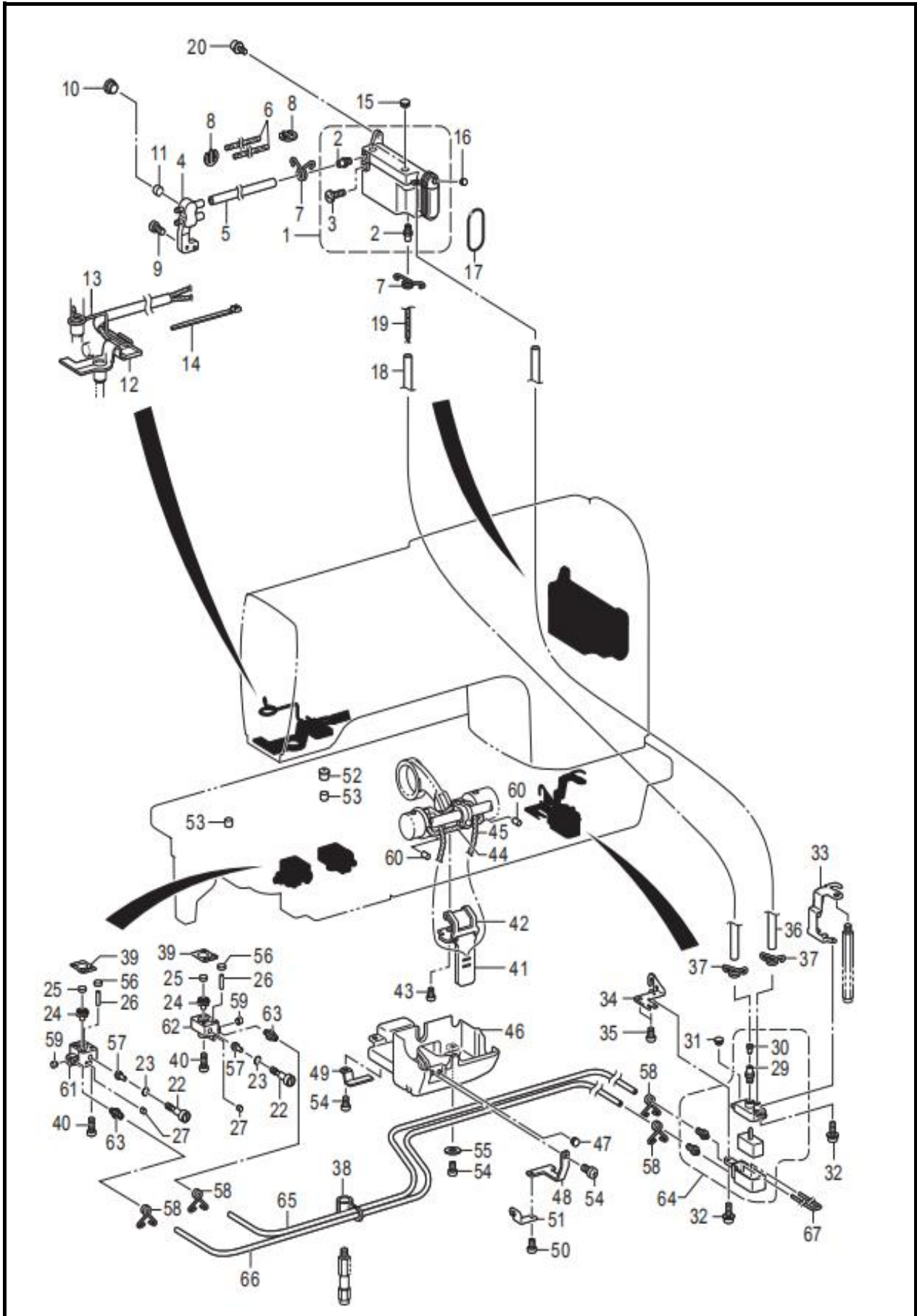
9. 针位装置/Gauge parts

序号 NO.	编号 Part NO.	参考编号 Ref.Part NO.	名称	Name	数量 Amt.		备注
					403	405	
1	51820490		针夹组件	Needle clip	1	1	842D/872D
2	02000153		螺钉SM3.57x4	Screw SM3.57x4	2	2	
3	51820850		针板	needle board	1	1	
4	51822880		螺钉SM4.36x8	Screw SM4.36x8	1	1	
5	51822890		螺钉SM4.36x8	Screw SM4.36x8	1	1	
6	51820870		压脚组件	Pressure foot	1	1	
7	51822870		螺栓SM3.57x9	Bolt SM3.57x9	1	1	
8	51820860		送布牙	feed dog	1	1	
9	51822900		螺栓SM3.18x7	Bolt SM3.18x7	2	2	
10	51826400		针夹组件L	Needle clip assembly	1	1	
11	51826410		针夹组件R	Needle clip assembly	1	1	
	51822760		机针DPx5 (#22)	Needle DPx5 (# 22)	2		
12	10100420		机针DPx5 (#14)	Needle DPx5 (# 14)		2	

10. 下轴装置/Lower shaft device

序号 NO.	编号 Part NO.	参考编号 Ref.Part NO.	名称	Name	数量 Amt.		备注
					403	405	
1	51820900		旋梭基座轴套 L	Rotary shuttle base	1	1	
2	51823620		油毡	linoleum	1	1	
3	51821370		旋梭基座轴套 R	Rotary shuttle base	1	1	
4	51823620		油毡	linoleum	1	1	
5	51821380		下轴	Lower axis	1	1	
6	51821360		上下偏心轮T	Upper and lower	1	1	
	51824640		上下偏心轮S	Upper and lower	1	1	
7	51822990		紧定螺钉 M6X6X0.75	Tightening screw	1	1	
8	51821420		轴承套	bearing sleeve	1	1	
9	10418500		轴承 6004ZZNR	Bearing 6004ZZNR	1	1	
10	51822660		紧定螺钉 M6X10X0.75	Tightening screw	1	1	
11	00806061		紧定螺钉 M6X6X0.75	Tightening screw	1	1	
12	51821390		同步轮 D 组件	Synchronous wheel D	1	1	
13	00162040		轴承 6204ZZNR	Bearing 6204ZZNR	1	1	
14	51822660		紧定螺钉 M6X10X0.75	Tightening screw	1	1	
15	51822850		紧定螺钉 M6X10X0.75	Tightening screw	2	2	

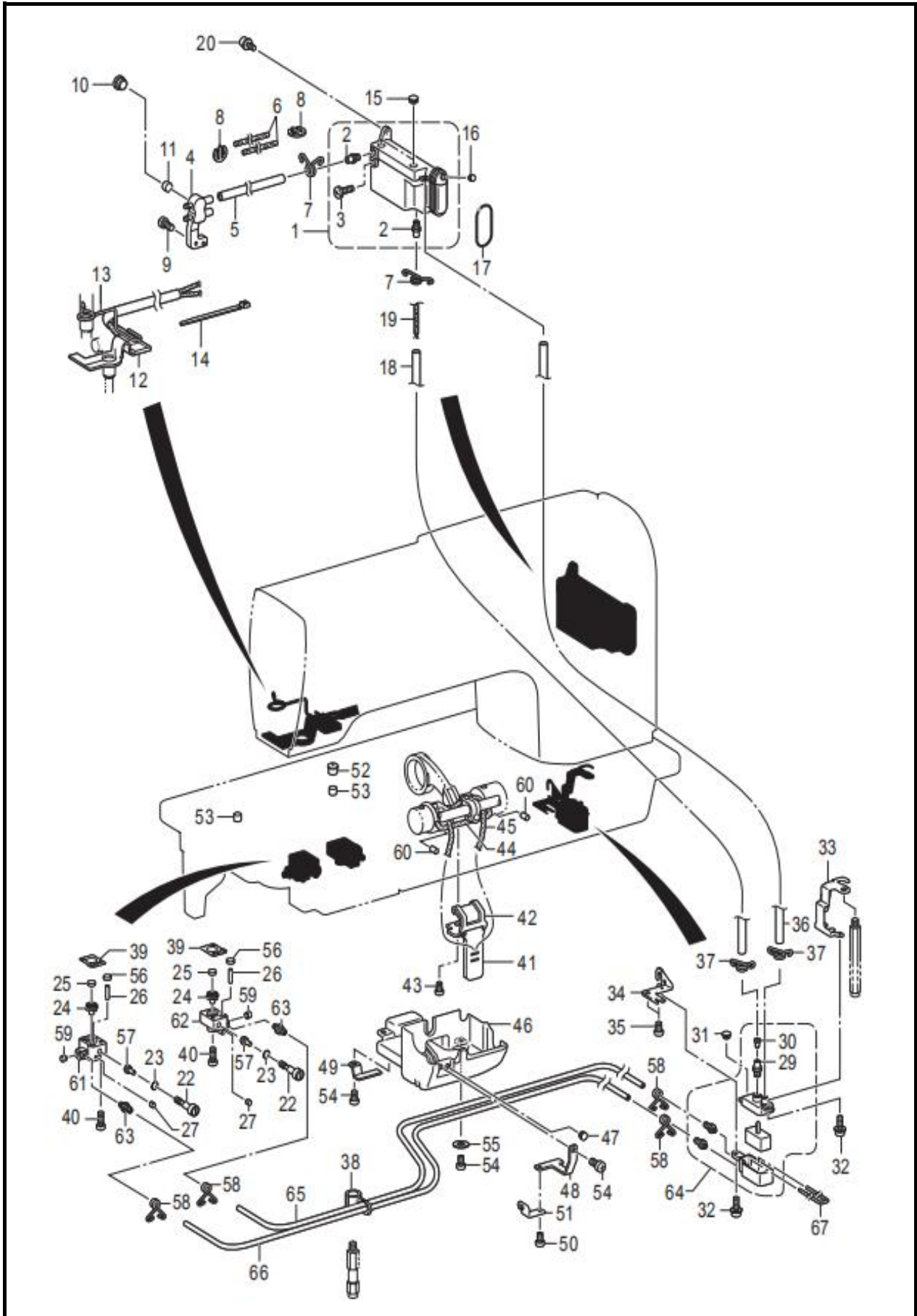
11-1. 供油润滑装置 (普通款) / Oil supply lubrication device (ordinary)



11-1. 供油润滑装置 (普通款) / Oil supply lubrication device (ordinary)

序号 NO.	编号 Part NO.	参考编号 Ref.Part NO.	名称	Name	数量 Amt.		备注
					403	405	
1	51821430		油罐组件	Oil tank components	1	1	
2	51821440		油嘴管	Oil nozzle pipe	2	2	
3	51826100		一字槽圆柱头螺钉 M8X	One slot cylindrical	1	1	
4	51821450		油管接头	hydraulic hose fitting	1	1	
5	10435030		油管Φ6内XΦ8外 L=135	Oil pipe with a	0.14	0.14	
6	51823650		棉油线 L=450	Cotton oil thread	2	2	
7	51821460		油管夹	Oil pipe clamp	3	3	
8	51821470		线夹	wire clamp	4	4	
9	00705080		螺钉 M5X8	Screw M5X8	1	1	
10	13100340		橡皮塞 12.5	Rubber stopper 12.5	2	2	
11	51823660		油毡	linoleum	2	2	
12	51823700		油毡垫	Oil felt pad	1	1	
13	51821480		油毡压架	Oil felt press frame	1	1	
14	50104040		尼龙扎带 4X150	Nylon zip tie 4X150	1	1	
15	13100340		橡皮塞 12.5	Rubber stopper 12.5	2	2	
16	13204490		橡皮塞 8	Rubber stopper 8	1	1	
17	51823040		O型圈 P38	O-ring P38	1	1	
18	10435030		油管Φ6内XΦ8外 L=190	Oil pipe with a	0.2	0.2	
19	51823730		棉油线 L=400	Cotton oil thread	1	1	
20	01505100		螺钉 (带垫圈) M5X10D	Screw (with washer)	2	2	
22	51823060		供油调节螺钉	Oil supply adjustment	2	2	
23	51823070		O 型圈 P4	O-ring P4	2	2	
24	51821510		橡皮垫圈	Rubber gasket	2	2	
25	51823750		旋梭轴油毡	Rotary shuttle shaft	2	2	
26	51823740		棉油线 L=80	Cotton oil thread	2	2	
27	51821540		橡皮塞 4.2	Rubber stopper 4.2	2	2	
29	51821440		油嘴管	Oil nozzle pipe	1	1	
30	51821590		油门垫片	Throttle gasket	1	1	
31	13204490		橡皮塞 8	Rubber stopper 8	1	1	
32	01504085		螺钉 (带垫圈) M4X8D	Screw (with washer)	2	2	
33	51821600		副油罐安装架A	Installation bracket A	1	1	
34	51821610		副油罐安装架 B	Installation bracket B	1	1	
35	00706080		螺钉 M6X8	Screw M6X8	2	2	
36	10435030		油管Φ6内XΦ8外 L=242	Oil pipe with a	0.25	0.25	
37	51821460		油管夹	Oil pipe clamp	2	2	
38	51821620		油管支架	Oil pipe bracket	1	1	
39	51821550		旋梭基座 D 垫片	Rotary shuttle base D	2	2	
40	52094416		螺钉 M4X16	Screw M4X16	4	4	
41	51823770		油毡	linoleum	1	1	
42	51821630		油毡压架	Oil felt press frame	1	1	
43	00705065		螺钉 M5X6	Screw M5X6	1	1	
44	51823780		油线 L=100	Oil line L=100	1	1	
45	51823790		棉油线 L=350	Cotton oil thread	1	1	
46	51821640		油盖	oil cap	1	1	
47	13204490		橡皮塞 8	Rubber stopper 8	1	1	
48	51821650		油管压架 A	Oil pipe pressure	1	1	
49	51821660		油管压架 B	Oil pipe pressure	1	1	
50	52094406		螺钉 M4X6	Screw M4X6	1	1	
51	51821670		油管导向	Oil pipe guidance	1	1	
52	51821680		油盖	oil cap	1	1	
53	51823800		油毡	linoleum	2	2	

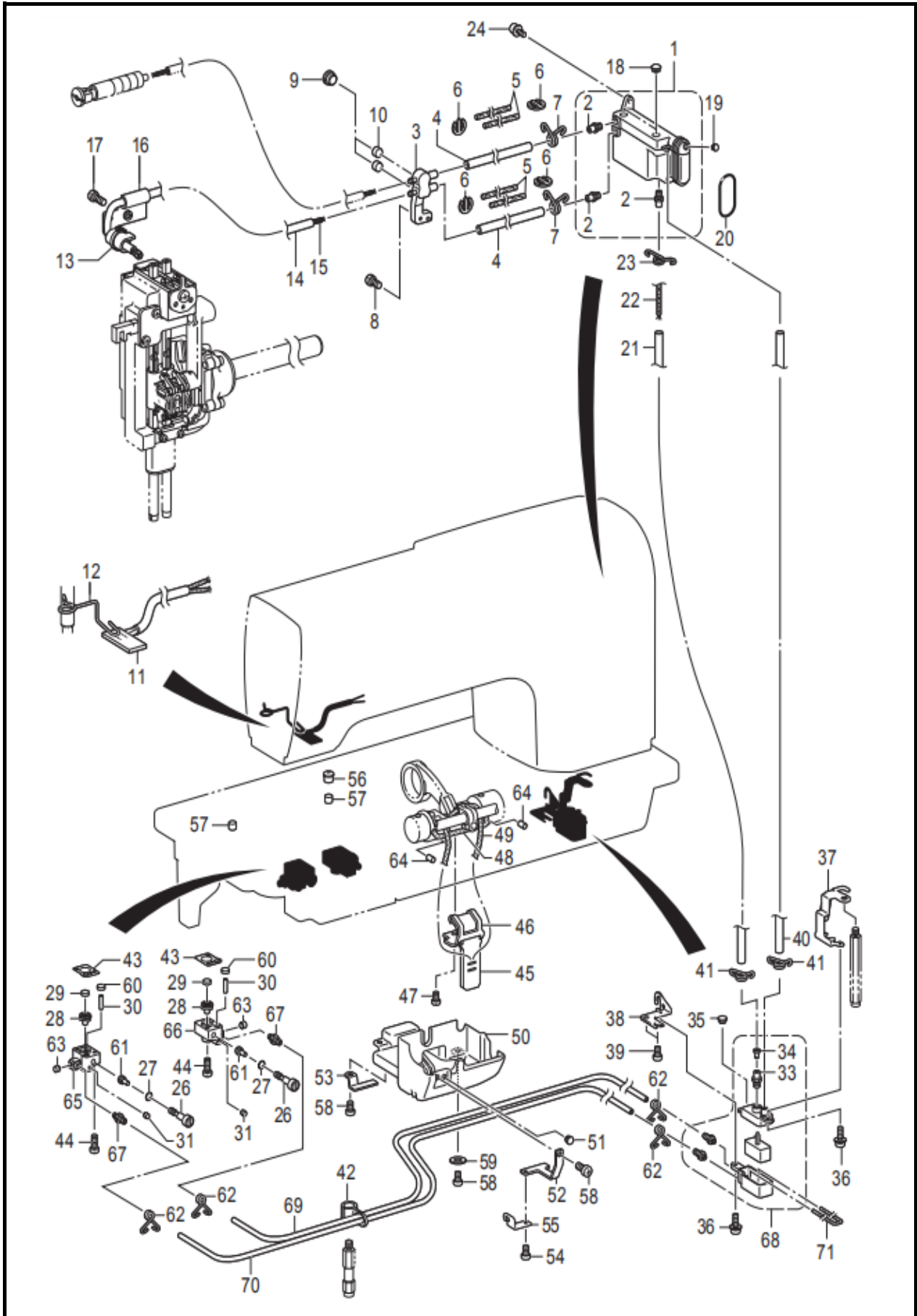
11-1. 供油润滑装置（普通款） / Oil supply lubrication device (ordinary)



11-1. 供油润滑装置 (普通款) /Oil supply lubrication device (ordinary)

序号 NO.	编号 Part NO.	参考编号 Ref.Part NO.	名称	Name	数量 Amt.		备注
					403	405	
54	00706100		螺钉 M6X10	Screw M6X10	3	3	
55	00506070		平垫圈 6	Flat Washer 6	1	1	
56	51823880		旋梭轴油毡	Rotary shuttle shaft	2	2	
57	51821520		柱塞	plunger	2	2	
58	51801800		油管夹	Oil pipe clamp	4	4	
59	51821530		橡皮塞 6.3	Rubber stopper 6.3	2	2	
60	51823810		油毡	linoleum	2	2	
61	51821500		集油器 L	Oil collector L	1	1	
62	51821570		集油器 R	Oil collector R	1	1	
63	51801790		回油接头	Return oil connector	4	4	
64	51821580		副油罐组件	Secondary oil tank	1	1	
65	52030260		油管	YouTube	0.4	0.4	
66	52030260		油管	YouTube	0.5	0.5	
67	51823840		羊毛油线 L=1000	Wool oil thread	1	1	

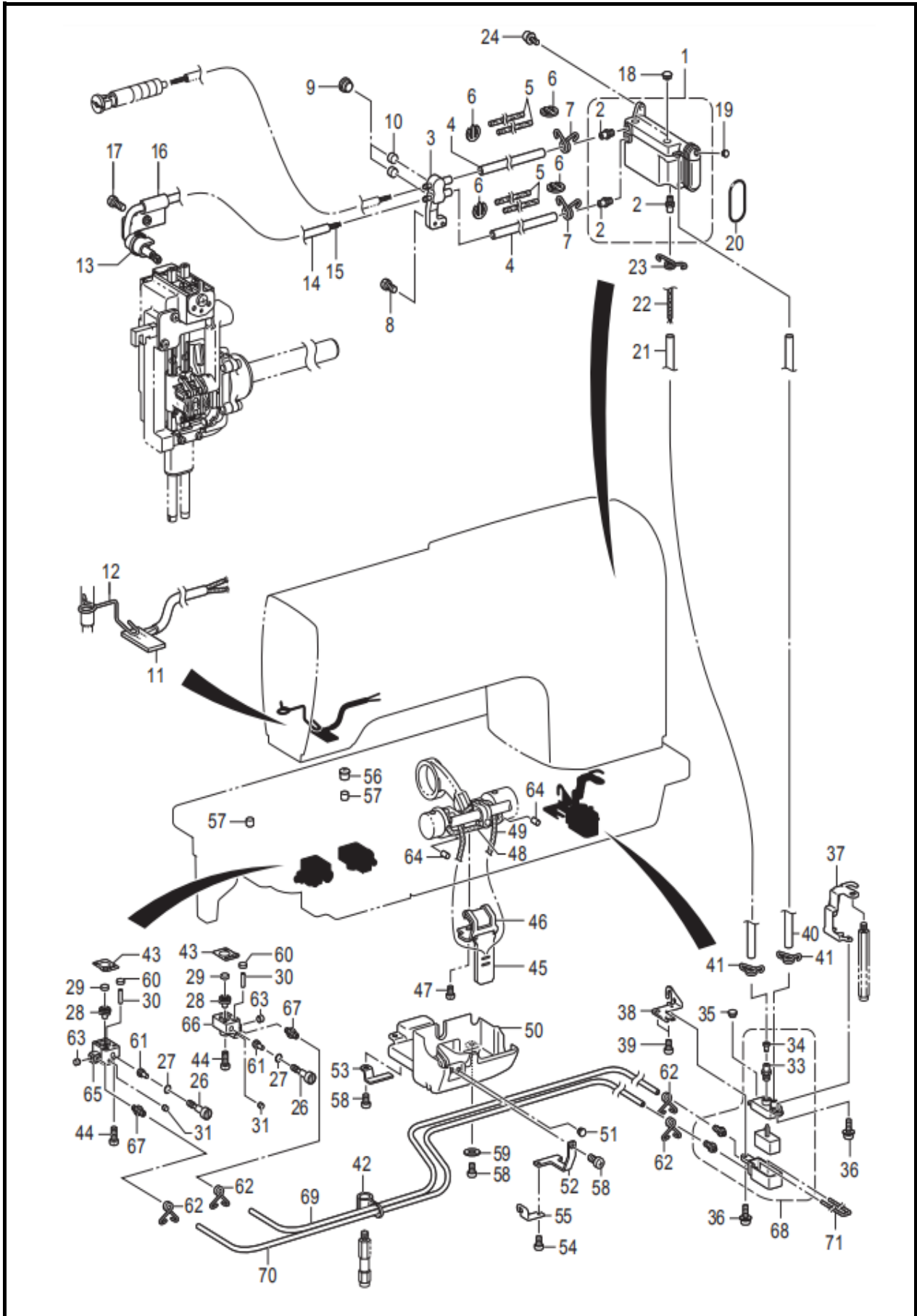
11-2. 供油润滑装置(分离款) / Oil supply lubrication device (separate)



11-2. 供油润滑装置 (分离款) /Oil supply lubrication device (separate)

序号 NO.	编号 Part NO.	参考编号 Ref.Part NO.	名称	Name	数量 Amt.		备注
					403	405	
1	51821430		油罐组件	Oil tank components	1	1	
1	51821430		油罐组件	Oil tank components	1	1	
2	51821440		油嘴管	Oil nozzle pipe	2	2	
3	51821450		油管接头	hydraulic hose fitting	1	1	
4	51823640		维尼龙油管 L=135	Velcro tubing L=135	2	2	
5	51823650		棉油线 L=450	Cotton oil thread	2	2	
6	51821470		线夹	wire clamp	3	3	
7	51827640		油管夹9	Oil pipe clamp 9	4	4	
8	00705080		螺钉 M5X8	Screw M5X8	1	1	
9	13100340		橡皮塞 12.5	Rubber stopper 12.5	2	2	
10	51823660		油毡	linoleum	2	2	
11	51826490		油毡组件	Oil felt components	1	1	
12	51821480		油毡压架	Oil felt press frame	1	1	
13	51826450		电线夹1.9X80	Wire clamp 1.9X80	1	1	
14	51826460		维尼龙油管 L=280	Velcro tubing L=280	1	1	
15	51826470		油线 L=410	Oil line L=410	1	1	
16	51821700		油管夹	Oil pipe clamp	1	1	
17	00705105		螺钉 M5X10	Screw M5X10	1	1	
18	13100340		橡皮塞 12.5	Rubber stopper 12.5	2	2	
19	13204490		橡皮塞 8	Rubber stopper 8	1	1	
20	51823040		O型圈 P38	O-ring P38	1	1	
21	51826480		维尼龙油管 L=210	Velcro tubing L=210	1	1	
22	51823730		棉油线 L=400	Cotton oil thread	1	1	
23	51821460		油管夹	Oil pipe clamp	1	1	
24	01505100		螺钉 (带垫圈) M5X10D	Screw (with washer)	2	2	
26	51823060		供油调节螺钉	Oil supply adjustment	2	2	
27	51823070		O 型圈 P4	O-ring P4	2	2	
28	51821510		橡皮垫圈	Rubber gasket	2	2	
29	51823750		旋梭轴油毡	Rotary shuttle shaft	2	2	
30	51823740		棉油线 L=80	Cotton oil thread	2	2	
31	51821540		橡皮塞 4.2	Rubber stopper 4.2	2	2	
33	51821440		油嘴管	Oil nozzle pipe	1	1	
34	51821590		油门垫片	Throttle gasket	1	1	
35	13204490		橡皮塞 8	Rubber stopper 8	1	1	
36	01504085		螺钉 (带垫圈) M4X8D	Screw (with washer)	2	2	
37	51821600		副油罐安装架A	Installation bracket A	1	1	
38	51821610		副油罐安装架 B	Installation bracket B	1	1	
39	00706080		螺钉 M6X8	Screw M6X8	2	2	
40	51823760		维尼龙油管 L=242	Velcro tubing L=242	1	1	
41	51827630		油管夹8.5	Oil pipe clamp 8.5	3	3	
42	51821620		油管支架	Oil pipe bracket	1	1	
43	51821550		旋梭基座 D 垫片	Rotary shuttle base D	2	2	
44	52094416		螺钉 M4X16	Screw M4X16	4	4	
45	51823770		油毡	linoleum	1	1	
46	51821630		油毡压架	Oil felt press frame	1	1	
47	00705065		螺钉 M5X6	Screw M5X6	1	1	
48	51823780		油线 L=100	Oil line L=100	1	1	
49	51823790		棉油线 L=350	Cotton oil thread	1	1	
50	51821640		油盖	oil cap	1	1	
51	13204490		橡皮塞 8	Rubber stopper 8	1	1	
52	51821650		油管压架 A	Oil pipe pressure	1	1	
53	51821660		油管压架 B	Oil pipe pressure	1	1	
54	52094406		螺钉 M4X6	Screw M4X6	1	1	
55	51821670		油管导向	Oil pipe guidance	1	1	
56	51821680		油盖	oil cap	1	1	
57	51823800		油毡	linoleum	2	2	

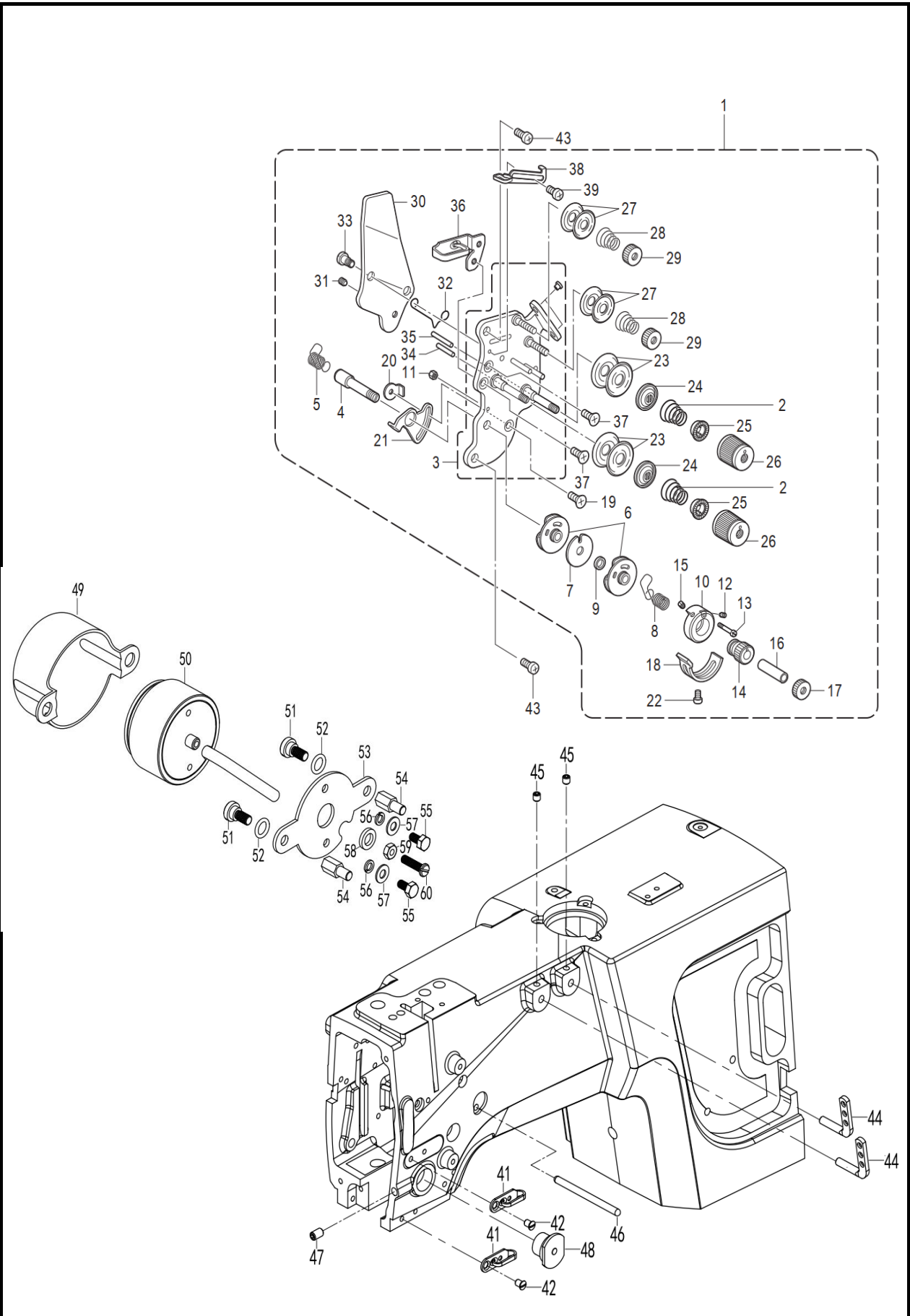
11-2. 供油润滑装置(分离款) / Oil supply lubrication device (separate)



11-2. 供油润滑装置 (分离款) /Oil supply lubrication device (separate)

序号 NO.	编号 Part NO.	参考编号 Ref.Part NO.	名称	Name	数量 Amt.		备注
					403	405	
58	00706100		螺钉 M6X10	Screw M6X10	3	3	
59	00506070		平垫圈 6	Flat Washer 6	1	1	
60	51823880		旋梭轴油毡	Rotary shuttle shaft	2	2	
61	51821520		柱塞	plunger	2	2	
62	51801800		油管卡簧M7	Oil pipe clamp spring	4	4	
63	51821530		橡皮塞 6.3	Rubber stopper 6.3	2	2	
64	51823810		油毡	linoleum	2	2	
65	51821500		集油器 L	Oil collector L	1	1	
66	51821570		集油器 R	Oil collector R	1	1	
67	51821560		供油口 3.8	Oil supply port 3.8	4	4	
68	51829160		副油罐组件	Secondary oil tank	1	1	
69	52030260		油管Φ4内XΦ6外	Oil pipe with a	0.45	0.45	单位米
70	52030260		油管Φ4内XΦ6外	Oil pipe with a	0.45	0.45	单位米
71	51823840		羊毛油线 L=1000	Wool oil thread	1	1	

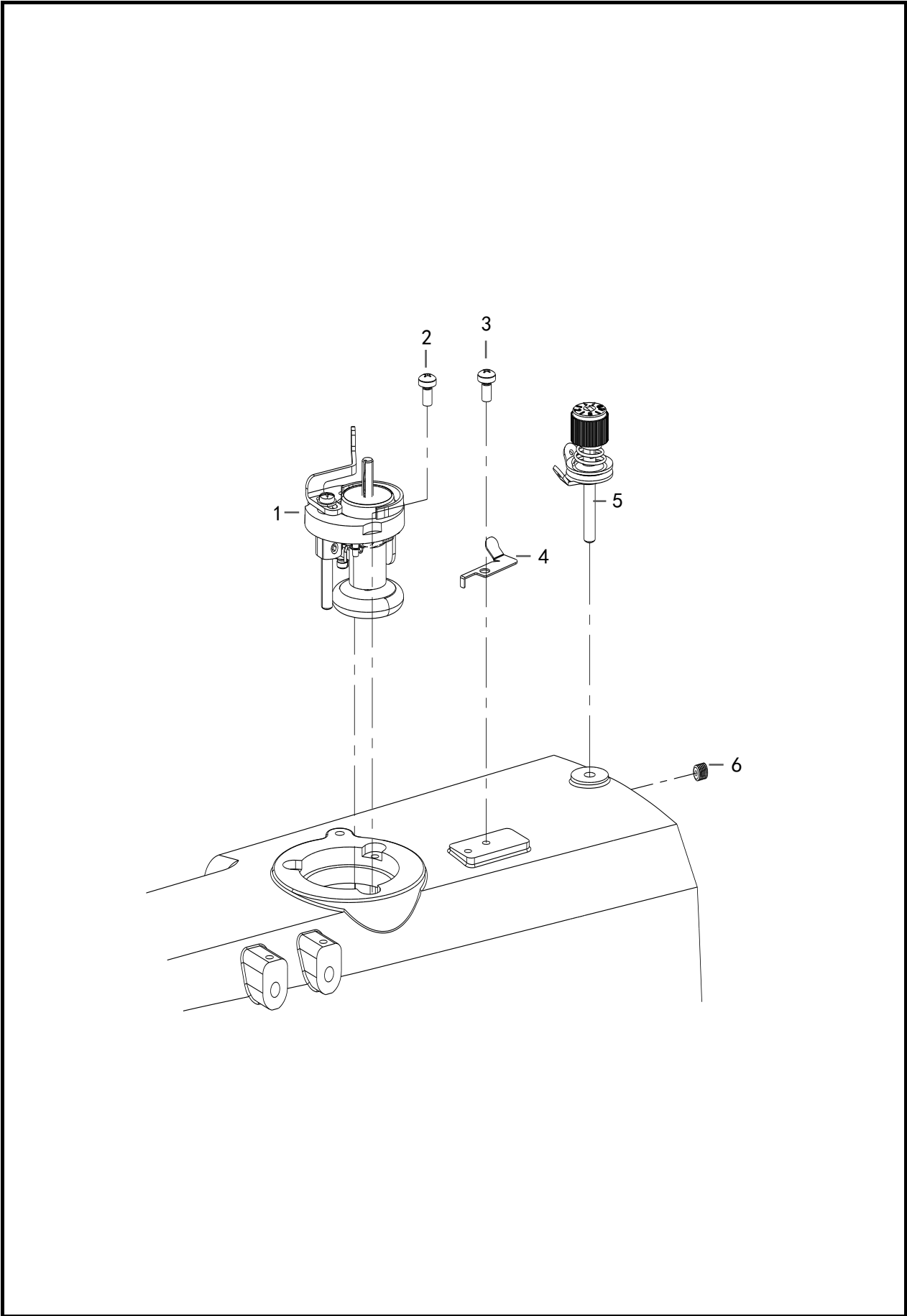
12. 穿线装置/Threading device



12. 穿线装置/Threading device

序号 NO.	编号 Part NO.	参考编号 Ref.Part NO.	名称	Name	数量 Amt.		备注
					403	405	
1	51821720		面线调节组件 -5	Surface line	1	1	
	51829170		面线调节组件 -3	Surface line	1	1	
2	51823160		弹簧 LL	Spring LL	2	2	
3	51823170		调整台组件	Adjust the platform	1	1	
4	51823180		调整短轴	Adjust the short axis	1	1	
5	51823210		弹簧 L	Spring L	1	1	
6	51823230		导向组件	Guiding components	2	2	
7	51823260		垫片	shim	1	1	
8	51823290		弹簧 R	Spring R	1	1	
9	51823320		轴套	bushing	1	1	
10	51823360		定位圈	Positioning Circle	1	1	
11	00403250		螺母 M3	Nut M3	1	1	
12	51823370		螺钉 M3.5	Screw M3.5	1	1	
13	51823380		固定螺栓	anchor bolt	1	1	
14	51823870		调节旋钮	adjustment knob	1	1	
15	51824010		螺钉 M3.5	Screw M3.5	1	1	
16	51823020		轴套	bushing	1	1	
17	51823030		调线螺母	Adjustment nut	1	1	
18	51823050		弹簧限位板	Spring limit plate	1	1	
19	51822910		螺钉 M3.5X6	Screw M3.5X6	1	1	
20	51822920		定位螺母 M3.5	Positioning nut M3.5	1	1	
21	51823080		限位板	limit plate	1	1	
22	51822470		螺钉 M3.5X5	Screw M3.5X5	1	1	
23	51823090		夹线盘	tension block	4	4	
24	51823100		夹线压盘	Wire clamping	2	2	
25	51822580		调节弹簧垫圈	Adjust the spring	2	2	
26	51822590		夹线螺母	Wire clamp nut	2	2	
27	51822620		导向盘	Guide disk	4	4	
28	51822630		小夹线弹簧 A	Small clip spring A	2	2	
29	51822640		夹线螺母	Wire clamp nut	2	2	
30	51822680		松线板	Pine wire board	1	1	
31	00805050		螺钉 M5X5	Screw M5X5	1	1	
32	51822690		松线弹簧	Loose wire spring	1	1	
33	51822710		轴位螺钉 M3.5	Axis screw M3.5	2	2	
34	51822740		松线销 L	Loose thread sales L	1	1	
35	51822770		松线销 R	Loose thread sales R	1	1	
36	51822790		线导向 U	Line oriented U	1	1	
37	51822910		螺钉 M3.5X6	Screw M3.5X6	2	2	
38	51822840		线调整	Line adjustment	1	1	
39	00703060		螺钉 M3X6	Screw M3X6	1	1	
41	51821750		线导向 M	Line oriented M	1	1	
42	51827260		一字槽球面圆柱头螺钉M	One slot spherical	2	2	
43	00705080		螺钉 M5X8	Screw M5X8	2	2	
44	51821730		三眼线勾	Three eyeliner hooks	2	2	
45	02000009		紧定螺钉 M6X6	Tightening screw	2	2	
46	51821740		松线轴	Loose spool	1	1	
47	00805101		紧定螺钉 M5X10	Tightening screw	1	1	
48	51825045		电子夹线器	Electronic wire clamp	1	1	
49	10102770		电磁铁盖	Electromagnetic cover	1	1	
50	10809610		430松线电磁铁	430 loose wire	1	1	
51	10105060		一字平头轴位螺钉M5	M5 flat head axial	2	2	
52	02000204		电磁铁盖螺钉O型圈	Electromagnetic cover	2	2	
53	10102740		电磁铁安装板	Electromagnetic	1	1	
54	51825061		六角柱螺钉M5X10	Hexagonal column	2	2	
55	01304080		外六角螺栓M4X8	Outer hexagon bolt	2	2	
56	00604000		弹簧垫圈	spring washer	2	2	
57	00504010		平垫圈	flat washer	2	2	
58	00506000		电磁铁缓冲垫圈	Electromagnetic	1	1	
59	00404030		六角螺母M4X3	Hexagonal nut M4X3	1	1	
60	01104250		一字平头螺钉M4X25	Flat head screw	1	1	

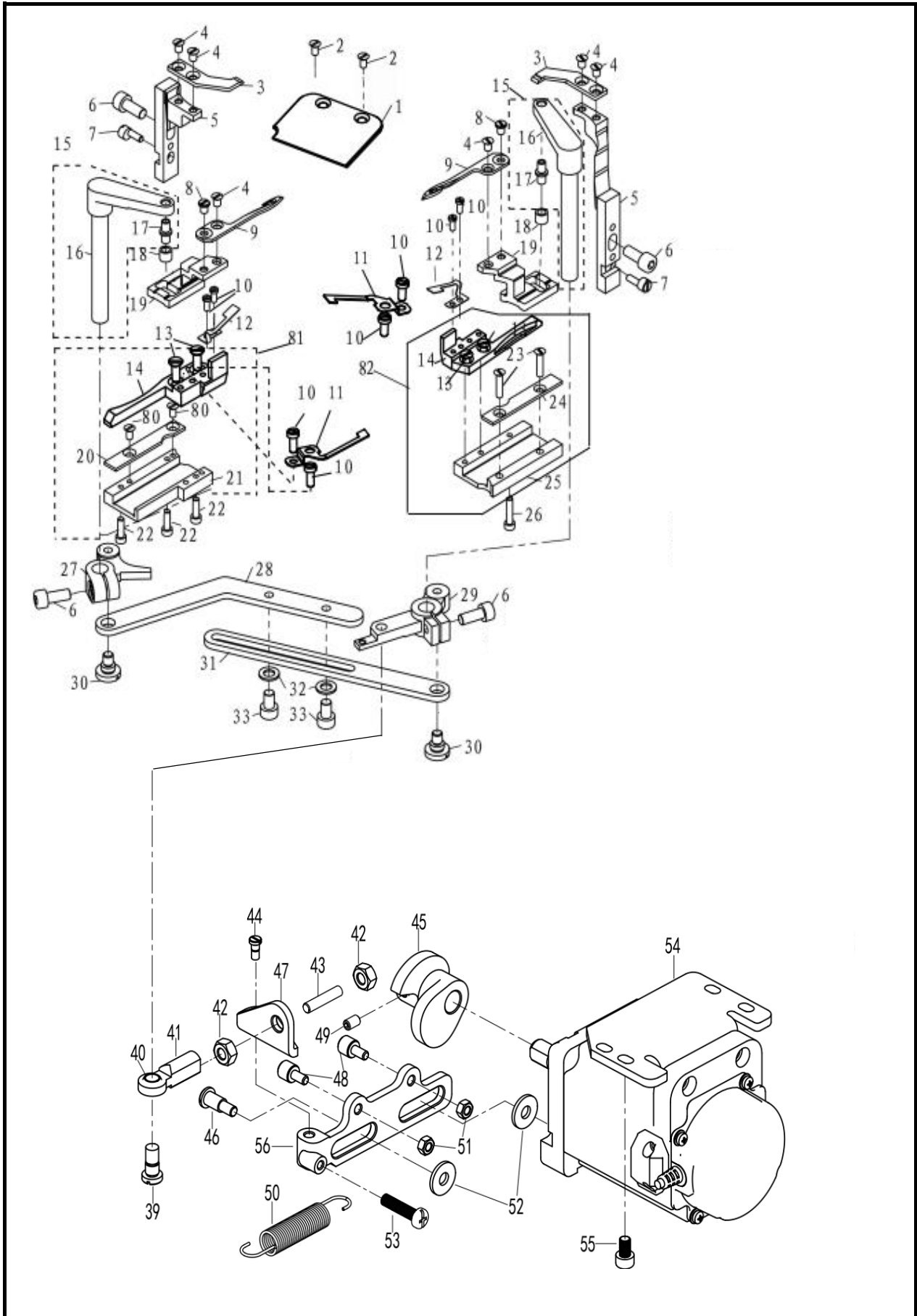
13. 绕线装置/Winding device



13. 绕线装置/Winding device

序号 NO.	编号 Part NO.	参考编号 Ref.Part NO.	名称	Name	数量 Amt.		备注
					403	405	
1	51821780		绕线器组件	Winder component	1	1	
2	51827250		螺钉 M5X8	Screw M5X8	3	3	
3	00705065		螺钉 M5X6	Screw M5X6	1	1	
4	10102270		切刀	cutter	1	1	
5	51801310		绕线器夹线组件	Wire winding clamp	1	1	
6	00805050		紧定螺钉 M5X5	Tightening screw	1	1	

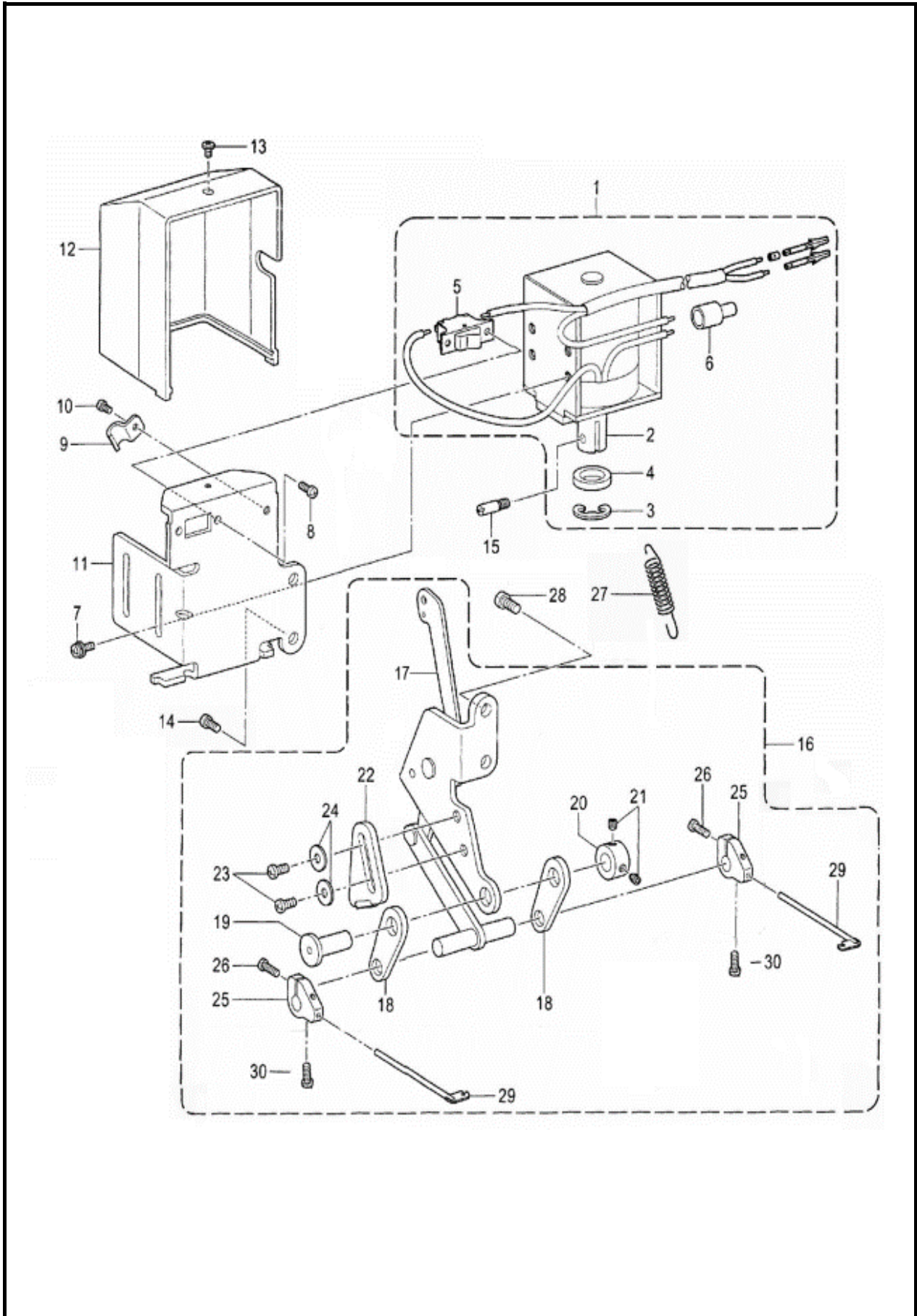
14. 剪线装置/Wire cutting device



14. 剪线装置/Wire cutting device

序号 NO.	编号 Part NO.	参考编号 Ref.Part NO.	名称	Name	数量 Amt.		备注
					403	405	
1	51821790		推板Y	Pushing board Y	1	1	
2	52093506		一字沉头螺钉M3X6 (发	One letter	2	2	
3	51821800		定刀	fixed blade	2	2	
4	51823110		螺钉 SM6.57x5	Screw SM6.57x5	6	6	
5	51821810		护针支架	Needle protection	2	2	
6	01205121		螺栓 M5x12	Bolt M5x12	4	4	
7	51823130		偏心调节螺钉	Eccentric adjustment	2	2	
8	51823140		螺钉SM3.57×6	Screw SM3.57 × 6	2	2	
9	51821820		动刀	wield a knife	2	2	
10	51823150		螺钉SM2.5x6	Screw SM2.5x6	8	8	
11	51821830		分线片压片	Split line tablet	2	2	
12	51821840		分线片弹簧	Split piece spring	2	2	
13	52093506		螺钉 M3×6	Screw M3 × 6	4	4	
14	51821850		动刀座	Moving knife holder	2	2	
15	51829190		动刀轴组件	Moving blade shaft	2	2	
16	51821860		动刀杆	Moving knife rod	2	2	
17	51827320		动刀驱动销	Moving knife drive	2	2	
18	51821870		滚轮	roller	2	2	
19	51821880		动刀支架	Knife support bracket	2	2	
20	51821890		导向挡片L	Guiding baffle L	1	1	
21	51821900		滑块导向L	Slide guide L	1	1	
22	01203100		螺栓 M3x10	Bolt M3x10	3	3	
23	10380340		螺钉 M3x14	Screw M3x14	2	2	
24	51821910		导向挡片R	Guiding baffle R	1	1	
25	51821920		滑块导向R	Slide guide R	1	1	
26	01203140		螺栓M3×14	Bolt M3 × 14	1	1	
27	51821930		切线杠杆L	Tangent lever L	1	1	
28	51821940		切线连杆L	Tangent connecting	1	1	
29	51821950		切线杠杆R	Tangent lever R	1	1	
30	51823200		轴位螺钉M5	Axis screw M5	3	3	
31	51821960		切线连杆R	Tangent connecting	1	1	
32	00505030		平垫圈5	Flat washer 5	2	2	
33	01205080		螺钉 M5×8	Screw M5 × 8	2	2	
39	51823220		轴位螺钉SM5.95	Axis screw SM5.95	1	1	
40	51822010		套管	casing	2	2	
41	51822020		接头组件R	Connector component	1	1	
42	00406031		螺母M6	Nut M6	1	1	
43	51825058		长度调节连杆M6	Length adjustment	1	1	
44	51825059		轴位螺钉M5	Axis screw M5	1	1	
45	51825014		凸轮	cam	1	1	
46	50005500		轴位螺钉M6	Axis screw M6	2	2	
47	51825044		连接片	connecting piece	1	1	
48	51825013		凸轮轴承	cam bearing	2	2	
49	00805050		紧定螺钉M5×5	Tightening screw M5	2	2	
50	51821970		切线复位拉簧	Tangent reset tension	1	1	
51	00404031		六角螺母M4X3	Hexagonal nut M4X3	2	2	
52	52035300		平垫圈6	Flat washer 6	2	2	
53	00704200		十字盘头螺钉M4X20	Cross pan head screw	1	1	
54	51825009		剪线电机	Wire cutting motor	1	1	
55	01205080		内六角螺栓M5X8	Internal hexagon bolt	4	4	
56	51825012		滑叉	Sliding fork	1	1	

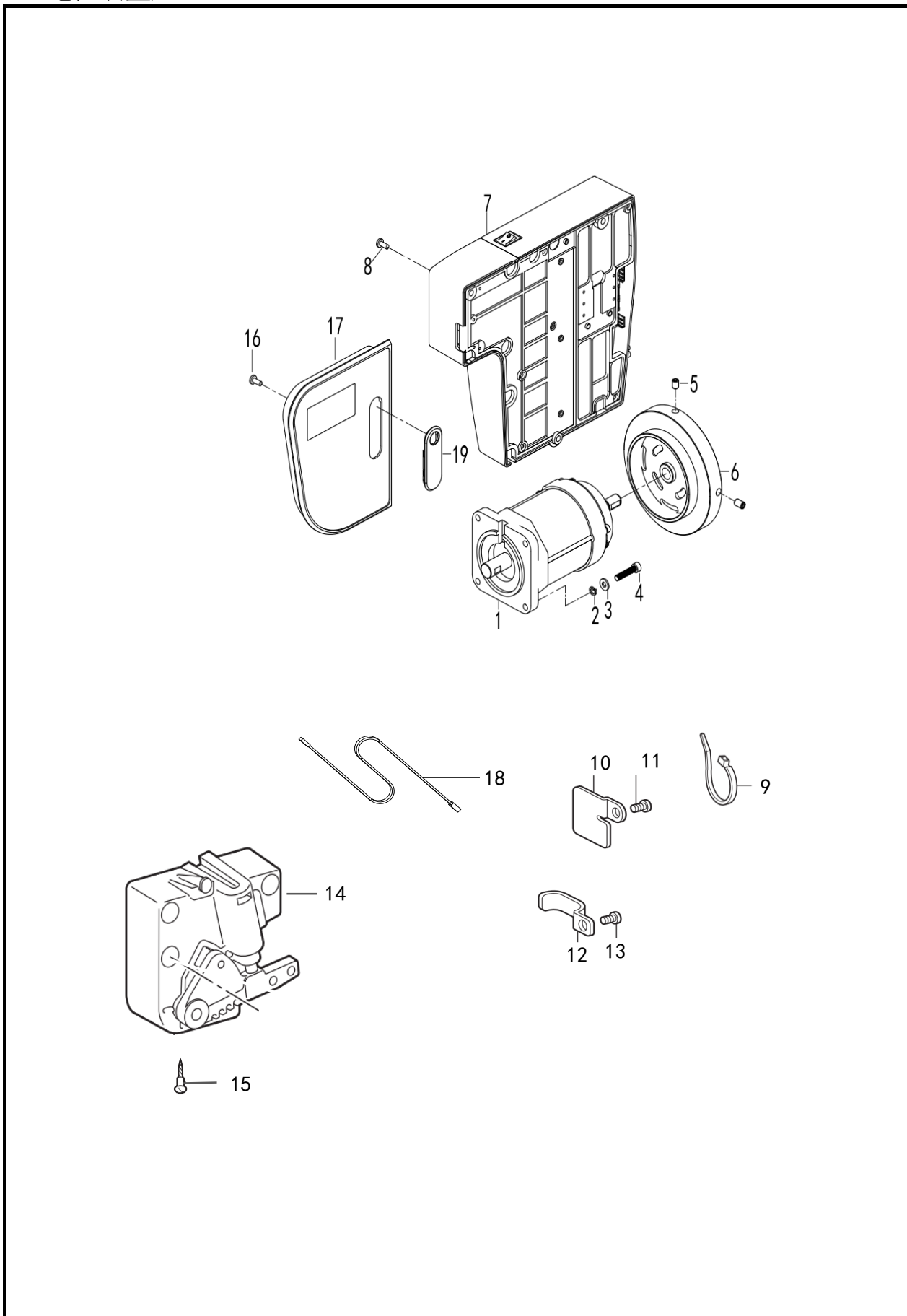
15. 扫线装置 (选配) /Wire sweep device(optional)



15. 扫线装置 (选配) /Wire sweep device(optional)

序号 NO.	编号 Part NO.	参考编号 Ref.Part NO.	名称	Name	数量 Amt.		备注
					403	405	
1	51822270		扫线电磁铁组件	Scanning	1	1	
2	51822260		扫线电磁铁组件	Scanning	1	1	
3	02000126		挡圈E9	Retaining ring E9	1	1	
4	51823310		电磁铁缓冲垫圈	Electromagnetic	1	1	
5	51823900		扫线开关	Scan line switch	1	1	
6	51823890		电线接头	wire connector	1	1	
7	01504085		螺钉(带垫圈) M4×8DB	Screw (with washer)	4	4	
8	00705150		螺钉M5×10	Screw M5×10	2	2	
9	51822280		电线固定夹	Wire fixing clip	1	1	
10	00704065		螺钉M4x6	Screw M4x6	1	1	
11	51822290		电磁铁安装板	Electromagnetic	1	1	
12	51822260		扫线电磁铁盖	Scanning	1	1	
13	01504085		螺钉 (带垫圈) M4x8DB	Screw (with washer)	1	1	
14	01503081		螺钉M3×6	Screw M3×6	2	2	
15	51822370		柱塞销	Plunger pin	1	1	
16	51822300		扫线连杆组件	Scanning linkage	1	1	
17	51822360		电磁铁连杆	Electromagnetic	1	1	
18	51822310		扫线连杆C组件	Scanning linkage C	2	2	
19	51822330		连接板轴	Connecting plate shaft	1	1	
20	51822320		紧圈	Tight Circle	1	1	
21	00805050		紧定螺钉M5×5	Tightening screw M5	2	2	
22	51822340		定位板	positioning plate	1	1	
23	00705080		螺钉M5×8	Screw M5×8	2	2	
24	02000107		平垫圈5	Flat washer 5	2	2	
25	51823330		扫线器架	Sweeper rack	2	2	
26	51823350		螺钉SM3.18x12	Screw SM3.18x12	2	2	
27	51822350		弹簧	spring	1	1	
28	00705105		螺钉M5x10	Screw M5x10	2	2	
29	51822380		扫线器	Line scanner	2	2	
30	51823340		螺钉SM3.18×4	Screw SM3.18×4	2	2	

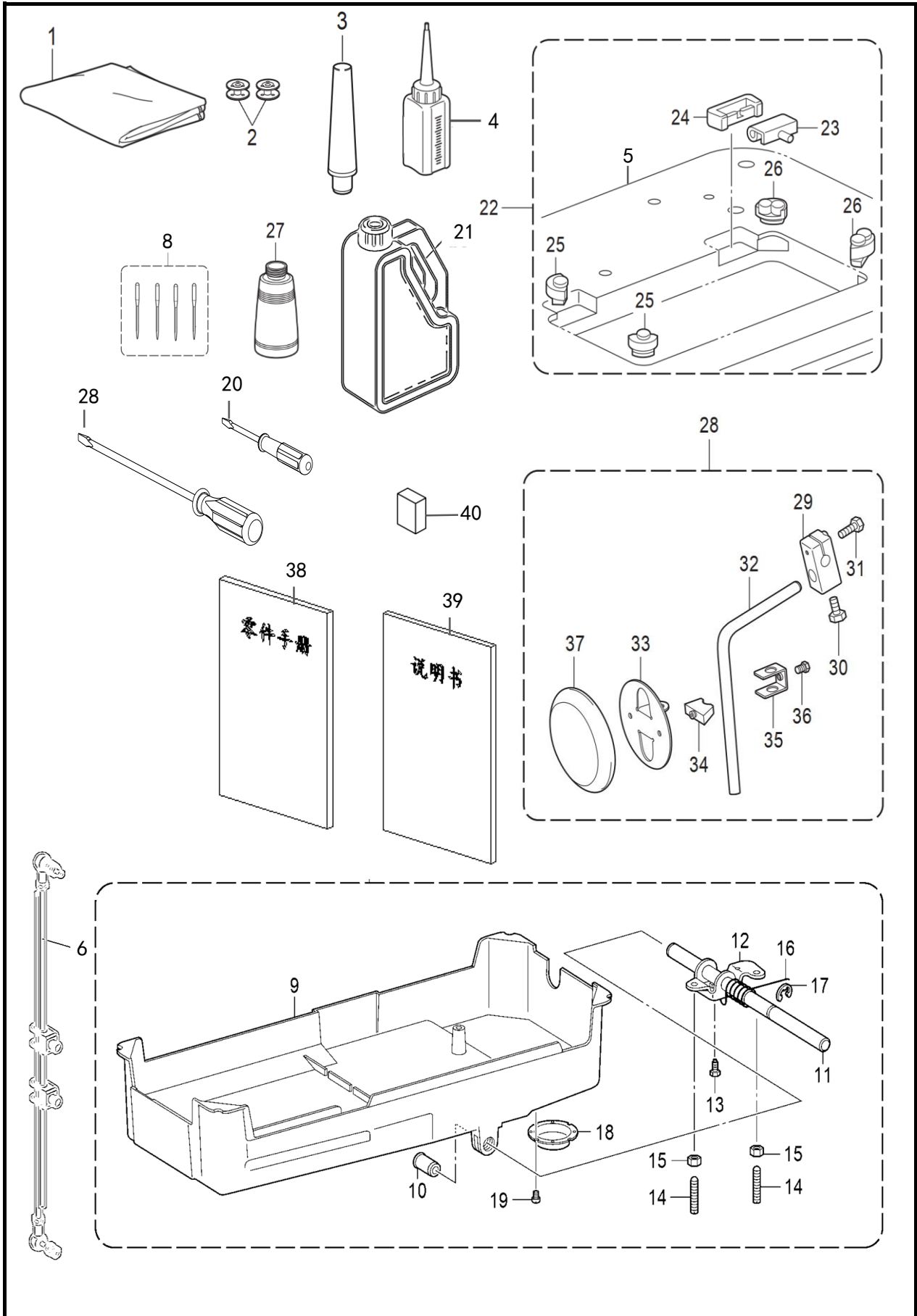
16. 电控装置/Electronic control unit



16. 电控装置/Electronic control unit

序号 NO.	编号 Part NO.	参考编号 Ref.Part NO.	名称	Name	数量 Amt.		备注
					403	405	
1	51822410		电机组件	motor assembly	1	1	
2	00505030		平垫圈 5	Flat washer 5	4	4	
3	10425640		弹簧垫圈 5	Spring washer 5	4	4	
4	01205250		螺栓 M5X25	Bolt M5X25	4	4	
5	02000012		紧定螺钉 M5X6	Tightening screw	2	2	
6	51822420		手轮	handwheel	1	1	
7	51822510		电控组件	Electronic control	1	1	
8	00705125		螺钉M5X12	Screw M5X12	5	5	
9	50104040		尼龙扎带 4X150	Nylon zip tie 4X150	2	2	
10	51822450		电线固定夹	Wire fixing clip	1	1	
11	00705080		螺钉 M5X8	Screw M5X8	1	1	
12	51822440		多线夹	Multi line clamp	1	1	
13	00705080		螺钉 M5X8	Screw M5X8	1	1	
14	51802880		控速器组件	Speed controller	1	1	
15	02000157		螺钉 ST4.5X20	Screw ST4.5X20	8	8	
16	00704120		十字盘头螺钉M4X12	Cross pan head screw	3	3	
17	51825029		操作屏组件	Operation screen	1	1	
18	51824710		操作屏连接线	Operation screen	1	1	
19	51825062		油盖	oil cap	1	1	

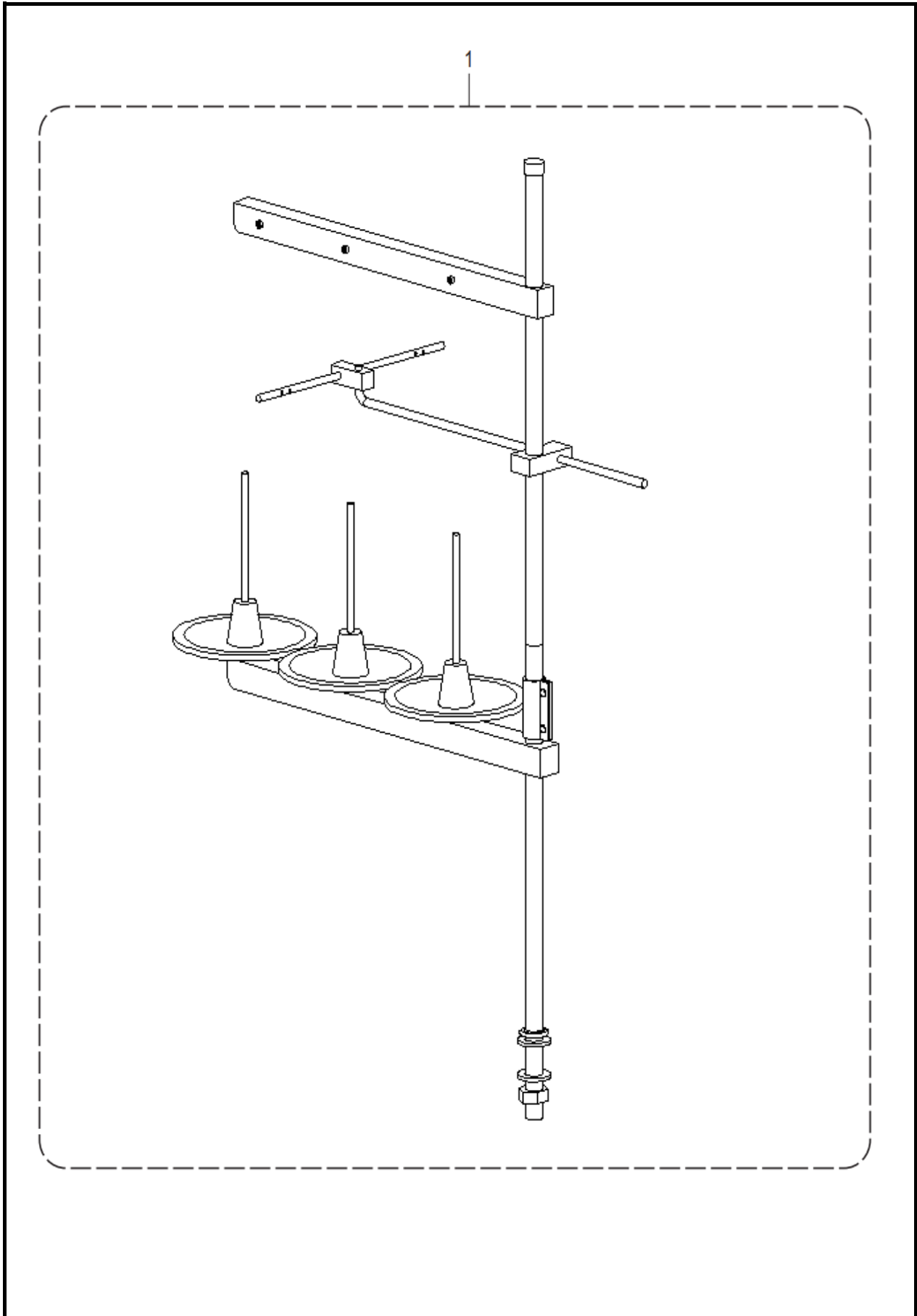
17. 油盘装置/Oil pan assembly



17. 油盘装置/Oil pan assembly

序号 NO.	编号 Part NO.	参考编号 Ref.Part NO.	名称	Name	数量 Amt.		备注
					403	405	
1	10103680		机头罩	Head cover	1	1	
2	51821220		梭芯	bobbin	2	2	
	51824590		梭芯 (小梭)	Shuttle core (small)			
3	51822480		机头撑杆	Head strut	1	1	
4	10103480		油壶组件	Oil pot component	1	1	
5	51824470		台板	stage floorboard	1	1	
6	51802900		控速器拉杆组件	Speed control rod	1	1	
8	51822760		机针 DPX5... (#22)	Needle DPX5... (#	4	4	
	10601070		机针 (14号)	Needle (No. 14)	4	4	
9	51824300		油盘	oil pan	1	1	
10	51824310		轴套	bushing	2	2	
11	51824320		膝控横轴	Knee control	1	1	
12	51824330		膝控	Knee control	1	1	
13	01306200		外六角螺栓 M6X20	Outer hexagon bolt	1	1	
14	00906190		紧定螺钉 M6X19	Tightening screw	2	2	
15	00406050		螺母 M6	Nut M6	2	2	
16	51824340		复位弹簧	return spring	1	1	
17	51824350		挡圈 E10	Retaining ring E10	1	1	
18	51824360		放油口	oil drain port	1	1	
19	00704065		螺钉 M4X6	Screw M4X6	2	2	
20	10103540		小起子 3.4X70	Small screwdriver	1	1	
21	10103490		油罐组件	Oil tank components	1	1	
22	51802930		铁钉1.5X25	Iron nail 1.5X25	4	4	
23	51802440		机头连接钩组件	Head connection hook	2	2	
24	51802450		机头连接钩座	Head connection hook	2	2	
25	51824680		防震垫(A)	Shock pad (A)	2	2	
26	51824690		防震垫(B)	Shock pad (B)	2	2	
27	10103430		油壶	oil can	1	1	
28	10103550		小起子5.5X190	Small screwdriver	1	1	
29	51801940		抬压脚操纵杆接头	Lift and press foot	1	1	
30	10462930		外六角螺栓 M8X20	Outer hexagon bolt	1	1	
31	10462930		外六角螺栓 M8X20	Outer hexagon bolt	1	1	
32	51824410		膝控弯管	Knee controlled bend	1	1	
33	51801960		操纵板	Control panel	1	1	
35	51801950		操纵杆接头	Joystick connector	1	1	
36	01306120		外六角螺栓M6X12	Outer hexagon bolt	1	1	
37	51801980		操纵杆软垫	Control lever cushion	1	1	
38	51826900		零件手册	Parts manual	1	1	
39	51826910		说明书	Instruction Manual	1	1	
40	10536280		干燥剂	desiccant	1	1	

18. 线架装置/Wire clamp device



19. 线架装置/Wire clamp device

序号 NO.	编号 Part NO.	参考编号 Ref.Part NO.	名称	Name	数量 Amt.		备注
					403	405	
1	13206050		线架组件 3DRTHF	Wire frame	1	1	



零件手册
PARTS BOOK