

## ATTENTIONS TO BE PAID FOR SAFETY

### DON'T FAIL TO FULFILL

You should fulfill following explanations for the prevention of the user and the others form being hurt and the proprieties form being damaged.

We divide and explain you the degrees of peril and damage to be taken place when you'll neglect the contents of the display and the machine erroneously.

We divide and explain you the contents you should fulfill in accordance with the following illustration (Following is an example of the illustrations).

By putting "alarm label" onto every part of the machine, We rouse you to prevent the user and others form being hurt and proprieties form being damaged.

Ensure the position and contents in regard to the "alarm label" prior to the use.

Never remove nor reform the "alarm label".

Put a new one as early as possible, where the old "alarm label" is hard to read or when it is come off.



By the way, the repair technicians should pay attention to the fact that the “alarm labels” are put even within the machine in addition.

#### ATTENTIONS TO BE PAID AT THE TIME OF INSTALLATION

Install it horizontally on the stand of the floor durable to the weight.

Avert the location where cooling heating wind hits the machine direct, resulting in an uneven fusing.

Avert the location with high humidity.

Provide with the space for maintenance and inspection.

Don't fail to connect the green cord which works as the ground for the prevention of the accidents due to an electric shock, and, connect the power source to the exclusive one.

Don't bend nor crush the power source cord and air hoses.

#### OPERATION METHOD

Confirm the following points before running.

Is electric current sent certainly? Check if air entering the machine properly and then check the pressure gauge.

Set the power source breaker to ON. Set the power source switch to ON. Lights up the power source lamp.

Set the THERMOSTAT to the proper temperature required.

It takes about 20-40 minutes to get to the required temperature. Then the thermo lamp will flash at short periods.

Set the PRESSING TIME.

Continue to press the pressuring press buttons at the extreme sides by your hands until the upper plate would have come down. Loose your hold when the OK lamp of green has lit up.

**EMERGENCY SWITCH:** The emergency switch is to be used at the time of emergency. In case of using air compressing under 2kg/cm. On the back of this machine there is a valve for the adjustment of air flow through the air cylinder, if working with pressure under 2kg/cm, unscrew the valve to allow for free air flow.

Don't fail to set the power source to OFF when the operation is over.

Double-station thermal transfer printing machine boot method and single-station is the same.

The operation methods are manual and automatic.

There is a “methods/automatic” switch on the right side of the fuselage. To choose from.

**“Methods”:** Move the worktable on the side where the fabric is placed to the side under the press table, at this time, Press the green pressure buttons on the left and right sides of the machine panel with both hands, The upper working face drops, When the green light is on, let go of your hands, After the set time, the cylinder rises, the upper working face resets, and the heat transfer printing ends.

**“Automatic”:** Simply push the table to the right or left of the correct position, the proximity switch installed will be perceived, the cylinder will automatically fall until the completion of this process

## HOW TO REMOVE THE LOWER PLATE

Pull the fixing knob of the lower plate.

Turn the lower plate clockwise or counterclockwise a little.

Lift the lower plate.

Don't fail to sustain and bring the lower plate with your hands.

## HOW TO MOUNT

Put the boss of the lower plate in to the lower plate base.

Pull the fixing knob of the lower plate so that the lower plate will go down completely .

Turn the lower plate clockwise or counterclockwise it's locked. Pay sufficient attention not to insert your hands and others.

## DAILY INSPECTION POINTS

Pay sufficient attention to the upper plate which is weak enough to damages caused by such . Metallic things as the cutter, scissors, pins and others,although it is excellent in heat-resistance.

Don't fail to wipe upper plate every day after the operation. Hear, pay attention not to be burned.

Exchange the cloth-cover and mates,articles of consumption. For now ones as early as possible. An original and specific material is used for the cloth-cover. Don't use general ones.

Make sure of the power source cord , plug and others whether they are hot or not and confirm the fuse . whether is it not cut or not.

Ensure the air leak, fixing of air hoses and others.

Drain the air filter. Pay attention to the water that might splash with force.

Wipe the main body of the machine using a well dried floor cloth. Don't pour water directly onto the machine , resulting in an electric leak and so on.

Don't bend nor crush the air hoses.

Don't make contact with the machine while the upper plate is going ups and downs.

Connect the power source to the exclusive power source in accordance with the ratio consumption power.

Don't fail to ground. Entrust the electric construction work shop near by with the request.

Pay attention not to be burned , as the pressing surface is hot enough to be burned.

Pluck the power source plug when the operation is over.

When the air hoses are off:

In the case where the upper plate is up, it will refuse to come down about 2or4 hours.

In the case where the upper plate is down, it will refuse to come up(it is dangerous).Therefore, strictest maintenance is necessary.

When the power source is disconnected; The upper plate is designed to go upward to recover its original position, if the air is on.

## TROUBLE SHOOTING

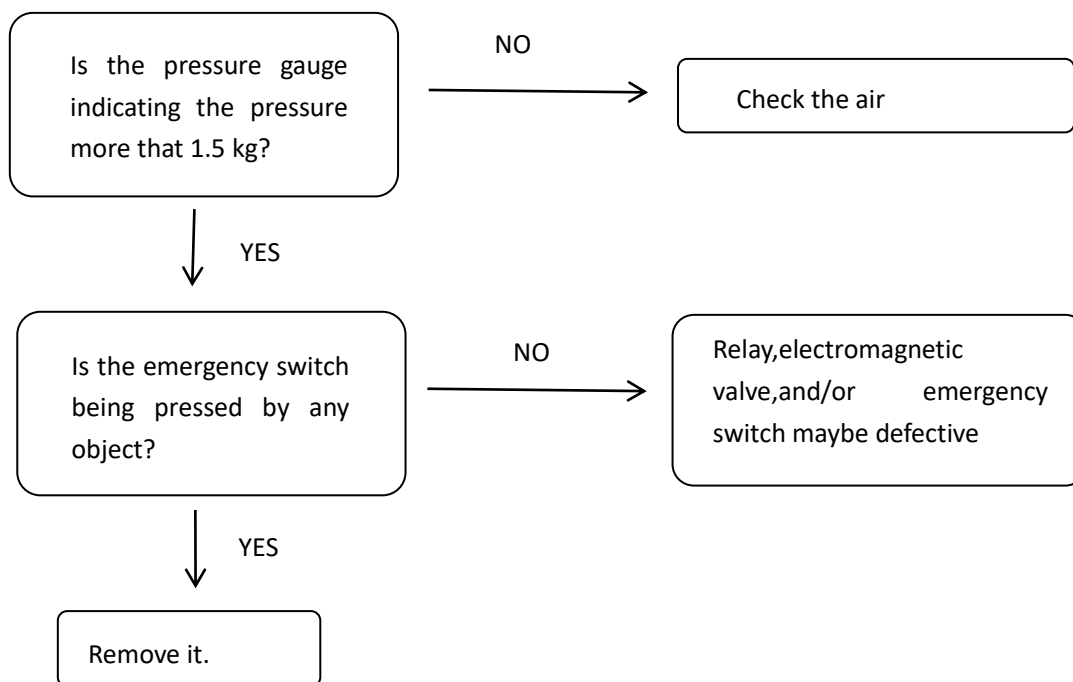
This trouble shooting is the reference to recover normality of the machine as early as possible, when it has become impossible to be used normally due to some causes. Therefore , we have on intention of forcing you the operation. Contact to the dealer you've brought machine or the agent, or to our company directly if you feel it difficult in view of the technic.

## ATTENTION TO BE PAID AT THE TIME OF REPAIR AND INSPECTION

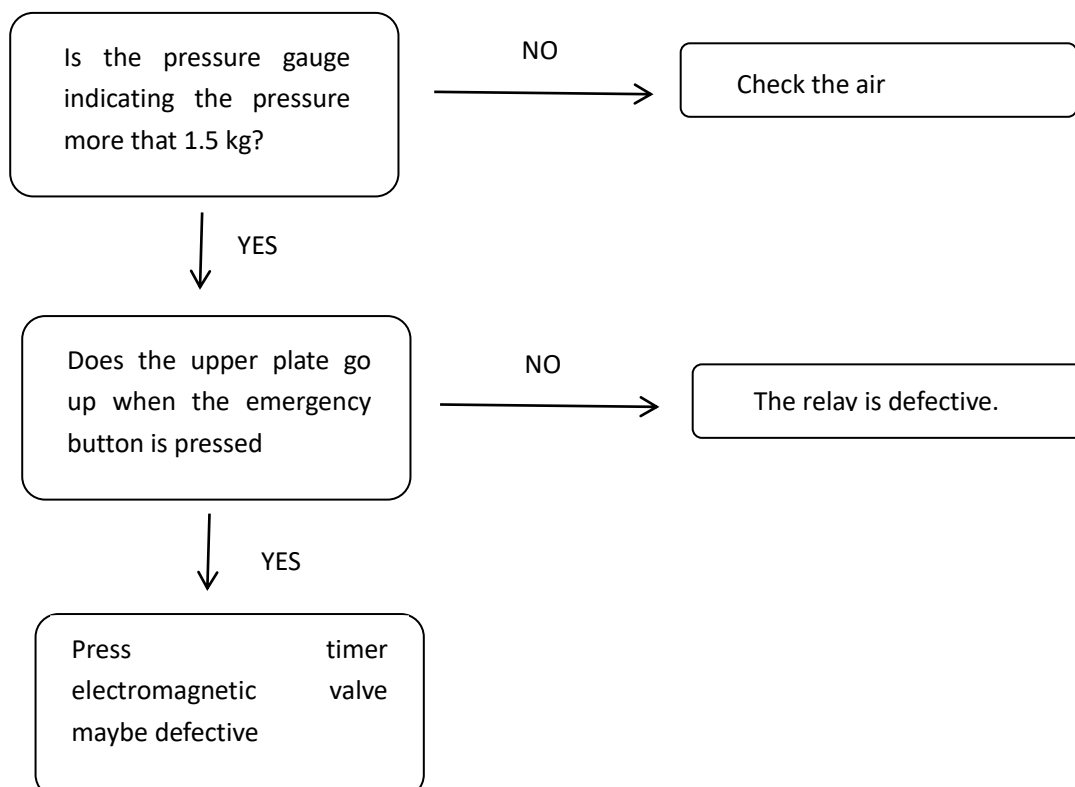
- Set the original power source to OFF,when the main body of the machine is completely cooled , before you'll start the operation, as it is dangerous.  
In the case where you execute the inspection by moving the machine, pay sufficient attention not to be caught in all of the driving parts.
- All of the wiring are high tensioned. Pay sufficient attention not to make contact with the wirings.
- Don't fail to disconnect the power source or the power source breaker,before you'll not without inputting the electricity.
- Pay sufficient attention when you measure the current ,voltage and resistance on the part of the electric devices in the condition where the electricity is inputted.
- Temperature of the machine is very high immediately when the drive has been stopped.
- When you are obliged to execute the operation, pay sufficient attention nor to be burned and etc.

## HP-4536A TROUBLE SHOOTING

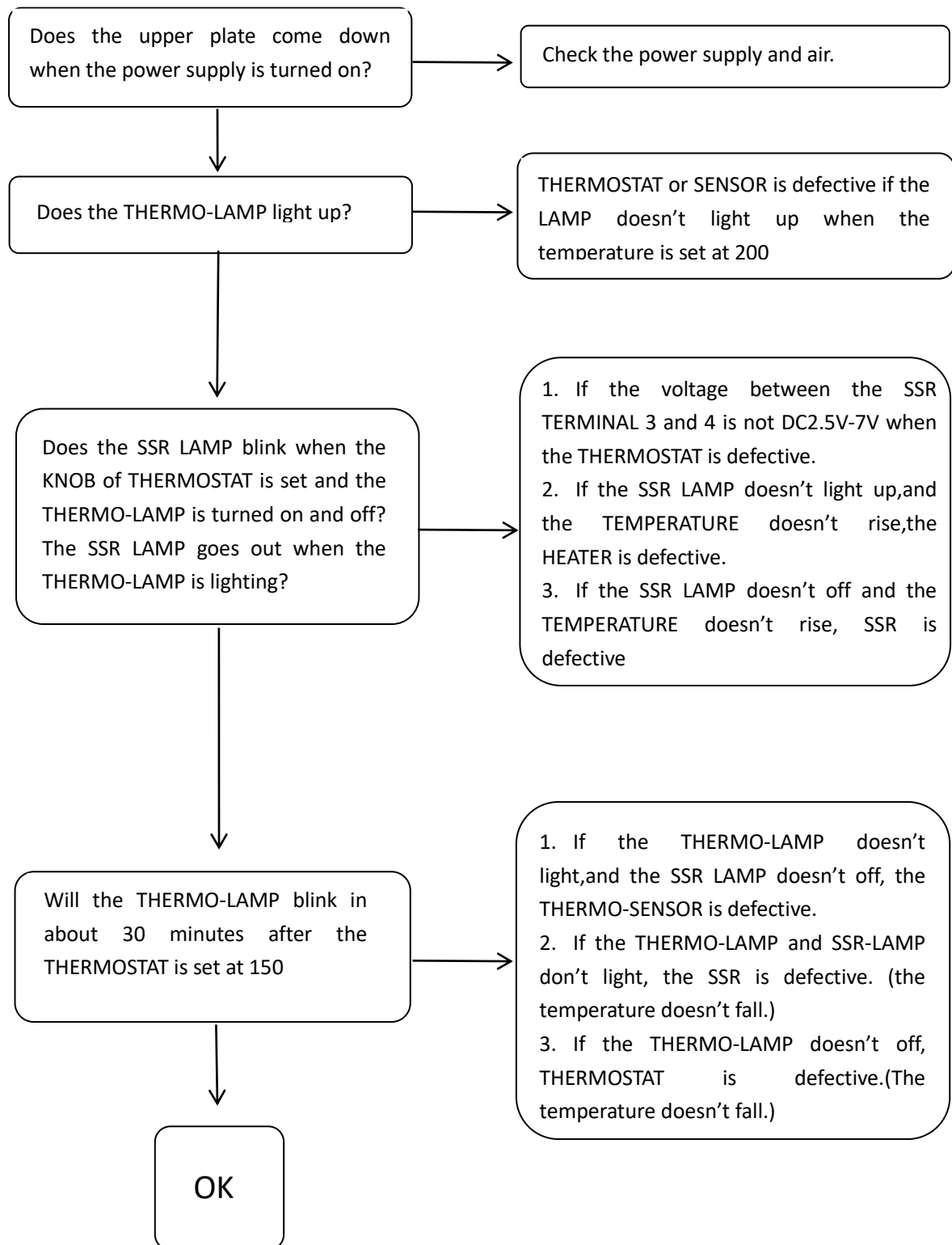
### ① UPPER PLATE DOESN'T COME DOWN



### ② UPPER PLATE DOESN'T GO UP



### ③ TEMPERATURE DOESN'T RISE



### OTHERS

- Water staying in filter
- Rusty inside of cylinder
- Insufficient air pressure
- Defective electromagnetic valve

Introduction of methods for general and in common use

lining pyrograph printing

(For your information)

Product type	Features/effects	Transferal temperature	Perdurability	Methods of Tear sheet	Scopes of application
High temperature senior cloth lining		180°C–210°C	15-20 seconds		
Low temperature cloth lining		160°C–180°C	15-18 seconds		
Paoer lining		100°C–140°C	10-15 seconds		
Swimsuit pyrograph	Long flexibility	140°C–170°C	4-10 seconds	Hot tear	Long range elasticity fiber, for insatnce: bathing suit
Nylon,Corfam pyrograph	planogaphy or half-tone screen	120°C–140°C	2-3 seconds	Cold tear	Nylon chemical fiber,for instance:umbrella, dust coat,PU,leatheretc.
Infiltration pyrograph	Good handle,air permeability	160°C–210°C	4-8 seconds	Cold tear	Cotton,blending,for instance: advertising shirt(black or white) etc
High temperature bled pyrograph	powerful third dimension , half-tone screen, environmental protection type	160°C–210°C	4-8 seconds	Hot tear	Cotton,blending,for instance: dress etc
low temperature bled pyrograph	powerful third dimension, elastic	120°C–160°C	4-8 seconds	Hot tear	Cotton,blending,for instance: dress etc

Scrub and press transfer paper	Half-tone screen				Photo-wedding dress and art design paper,for instance; toys,etc
Water gauge transfer paper	Half-tone screen				Gym equipment and tattoo paper, for instance:racket , safety cap etc.
Golden onion pyrograph	Metal feeling	120℃-160℃	6-10 seconds	Hot/Cold tear	Cotton, blending, for instance:dress etc.
Flocking pyrograph	Air-planting third dimension	150℃-190℃	8-15 seconds	Cold tear	Cotton, blending, for instance:sport suit etc.
Photo-chrome transfer paper	Effects of photo	120℃-180℃	8-15 seconds	Cold tear	Cotton, blending, for instance:advertising shirt etc.
Sublimation dye-air transfer paper	Air permeability, handle without printing	About200℃	8-20 seconds	Hot tear	Terylene and plastic, for instance: sport suit, shell of handset etc.
Plastic transfer printing paper	Half-tone screen	140℃-220℃	1-15 seconds	Cold tear	PP,PE,PS,ABS
Sport NO. Marking transfer paper	Half-tone screen	140℃-180℃	4-10 seconds	Cold tear	Cotton, blending, for instance:sport suit etc.