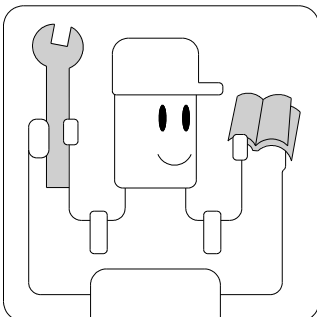


TCA-L25/M45/H50/X65



氣動式切帶機安裝手冊

THE INSTRUCTION GUIDE BOOK FOR PNEUMATIC TAPE CUTTER SERIES



■ 安裝前，請詳細閱讀安裝說明書

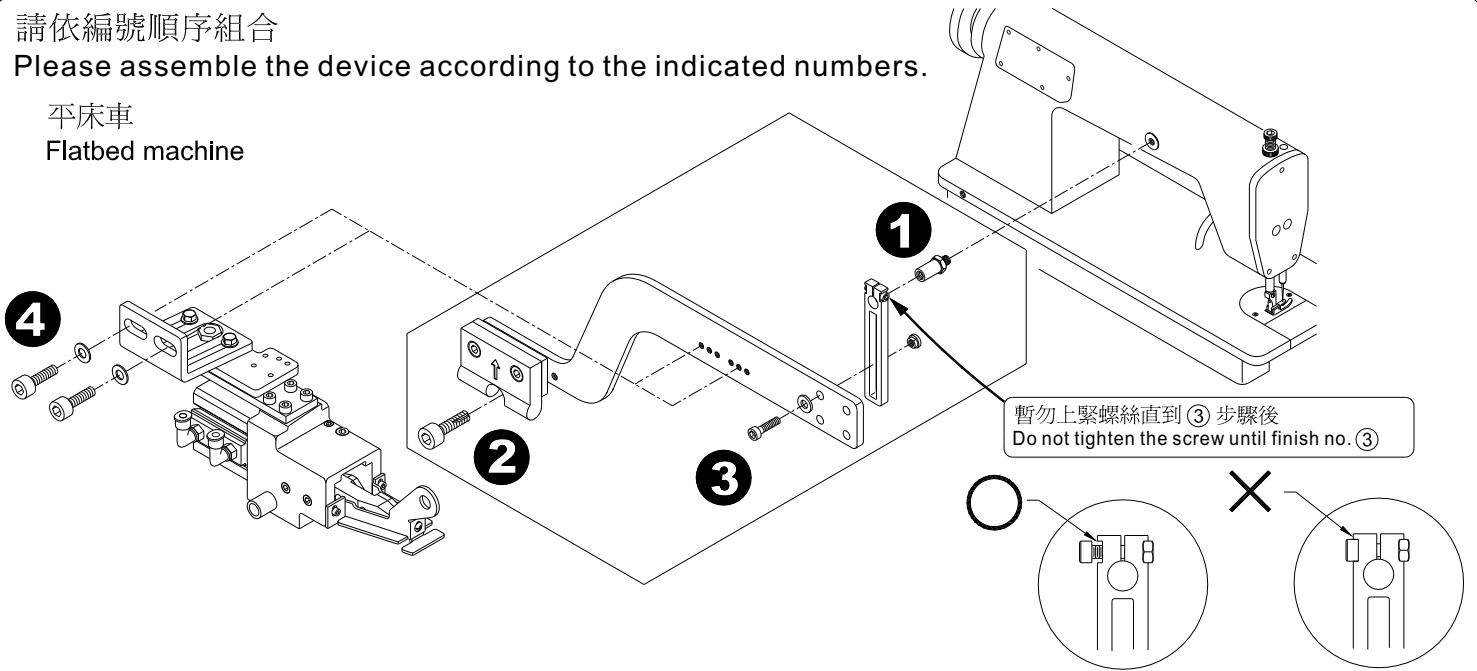
■ PLEASE READ INSTRUCTIONS & ASSOCIATED DRAWINGS BEFORE INSTALLATION

TCA-L25 / M45 / H50 / X65 組合圖
THE COMBINATION OF TCA-L25 / M45 / H50 / X65

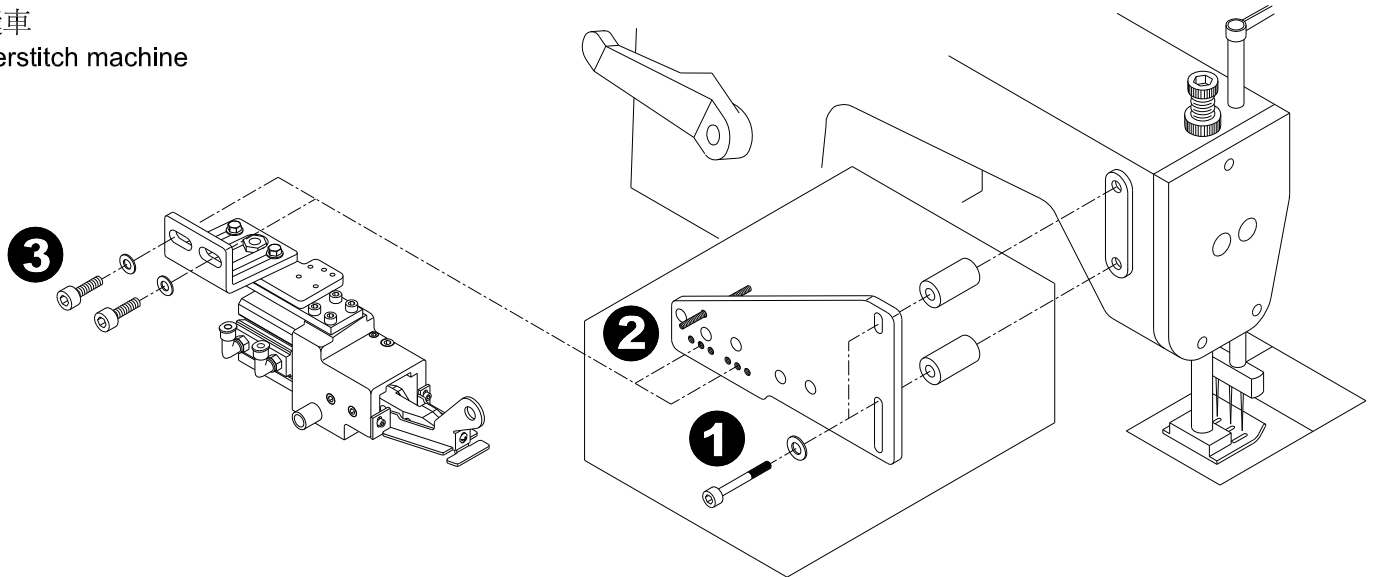
請依編號順序組合

Please assemble the device according to the indicated numbers.

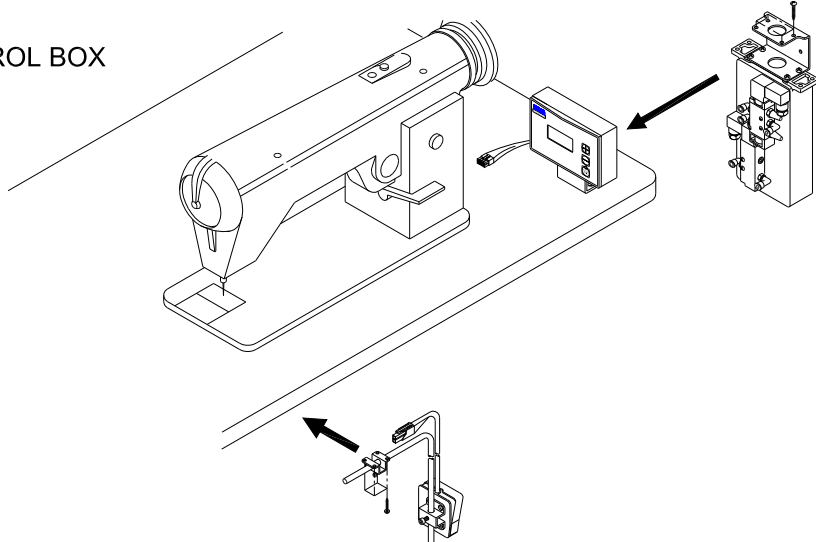
平床車
Flatbed machine



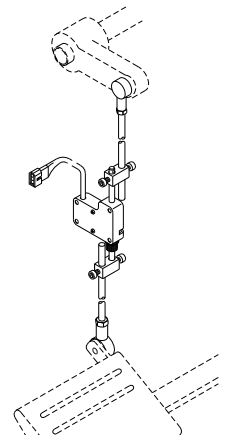
飾縫車
Coverstitch machine



控制組
CONTROL BOX



E6-2腳踏開關
PEDAL SWITCH



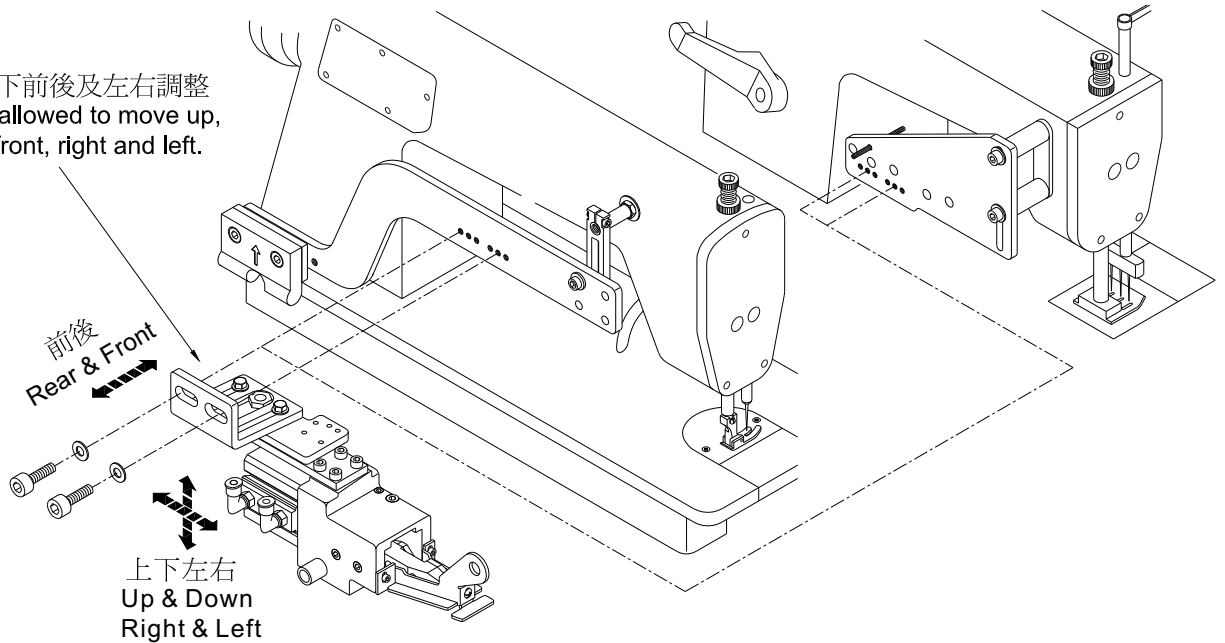
安裝前注意:

此切刀裝置的安裝位置或螺絲孔位置若與拉布裝置或其他裝置產生重疊或干涉時,不能同時使用,請自行設法加工固定

Please note before installation:

When install the TC device, Please relocate if device's location or the screw hole interferes or coincide with Puller or other devices. Otherwise please stop using TC device

基座可以上下前後及左右調整
The base is allowed to move up, down, rear, front, right and left.



吹氣調整:

吹氣桿的位置及吹氣方向不對或風量太小時,布料會阻塞於壓布腳與切刀之間隙間

Air Jet Bar adjustment:

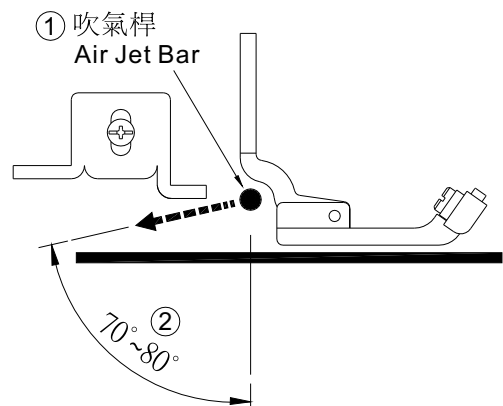
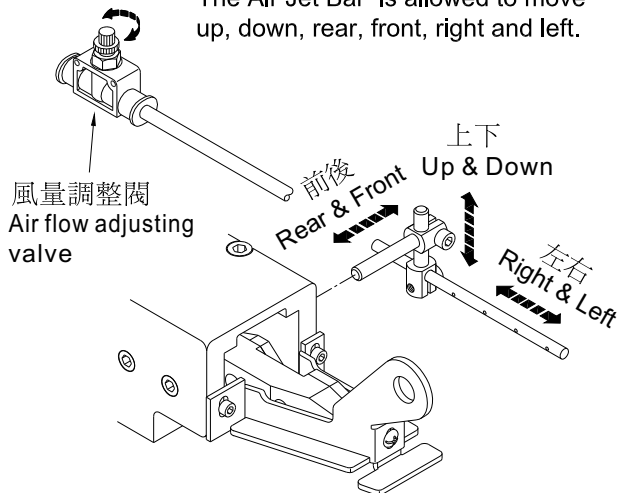
The material may be jammed at the gap between presser foot and cutter due to the improper location and angle of Air Jet or the weak air flow rate.

吹氣桿的位置 ① 應靠近壓布腳的後面略低於前端保護蓋
吹氣口的方向約70°~80° ② 吹氣往上或下均不利送布的順暢

Location of Air Jet Bar ① should be just behind the presser foot and also lower than the safety cover of cutter.

The Angle of Air Jet should be about 70~80 degree ②. If the angle is too high or low, the sewing material may be jammed easily.

吹氣桿可以上下前後及左右調整
The Air Jet Bar is allowed to move up, down, rear, front, right and left.



自動切刀光電組調整

Adjusting of Auto Tape Cutter with Photo Sensor unit

切刀光電組調整:

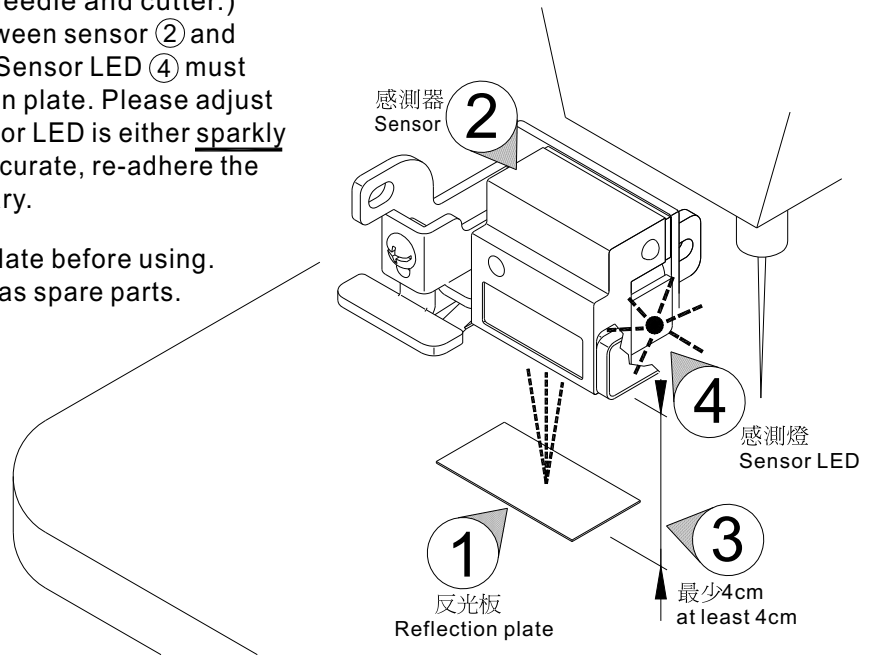
1. 反光板 ① 貼方感測器 ② 下在的車床面上(壓布腳的左側,車針與切刀之間)
2. 光電調整: 感測器 ② 與反光板 ① 必須要有 **4cm** 以上的距離 ③, 對準反光板時, 感測燈 ④ 必須是亮的, 閃爍或 不亮 表示位置不準確, 必需調整感測器 ② 的位置及仰角或重貼反光板的位置。

註: 使用前需撕除反光板表面 保護膠膜, 內附5片備用反光板

Adjusting of photo sensor for tape cutter :

1. The reflection plate ① is adhered on machine bed under sensor ② .
(At left side of presser foot and between needle and cutter.)
2. Adjusting of photo sensor : The distance between sensor ② and reflection plate ① must be at least **4cm** ③ . Sensor LED ④ must be light up when sensor ② aims at reflection plate. Please adjust the sensor ② position and angle. If the sensor LED is either sparkly or light off which means the position is not accurate, re-adhere the reflection plate to adjust position if necessary.

Remark : Tear off the membrane on reflection plate before using.
5 pcs of reflection plates are included as spare parts.

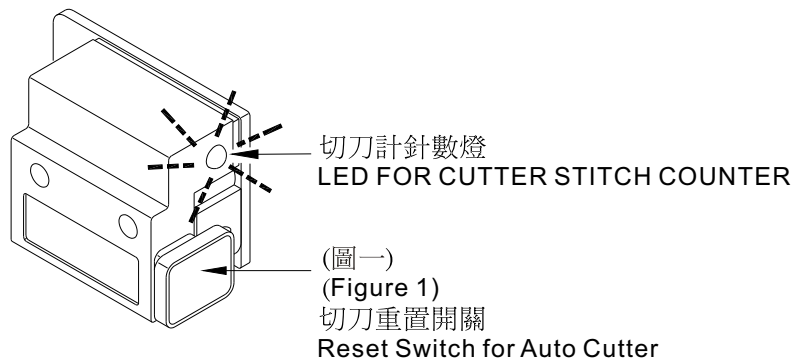


切刀重置開關使用說明

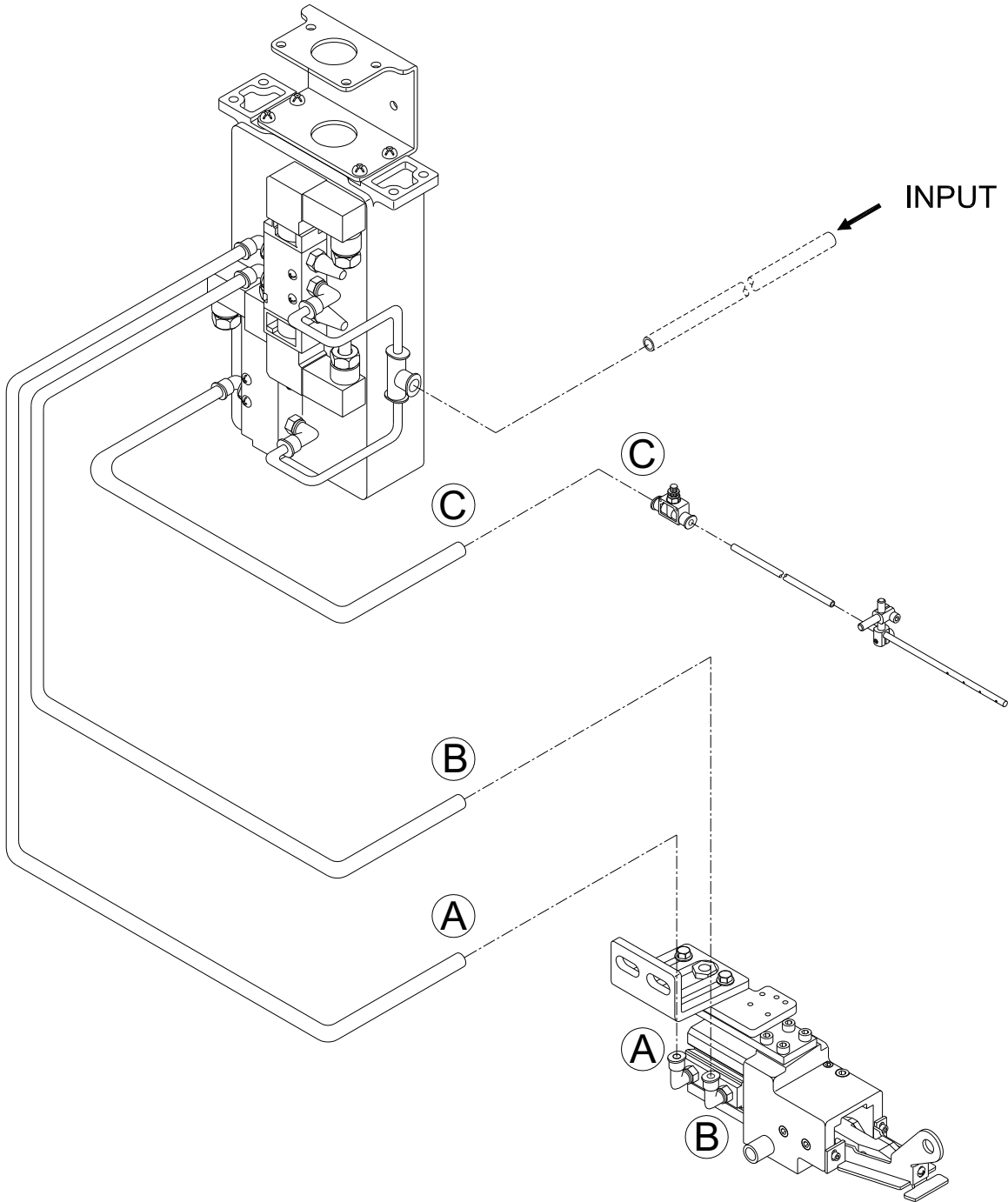
Operation guide of Reset Switch for Auto Cutter

使用說明：在車縫中途，因故取出布料時（例如：斷線或其他因素）。此燈亮時表示即將切刀，必須在放入布料後車縫前壓(圖一)按鍵，使切刀燈熄滅，取消因不正常狀況而誤切刀。（否則再度車縫會依設定已車縫針數自動切刀）

Operation guide : Push this button (Figure 1) to reset the process when operator is facing the improper operation (Such as Thread broken.) If the LED is Light ON which is mean cutter is ready to act, it is very important to push this button to reset the process before starting sewing after re-run the material.
(Otherwise, the cutter will be acted by stitch counter automatically.)

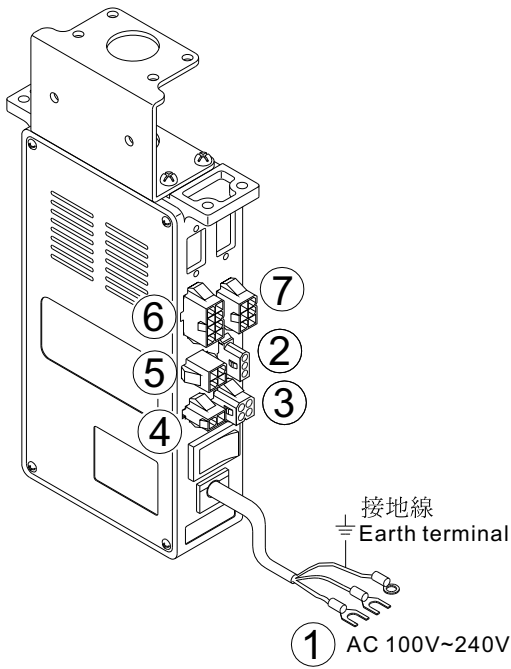


TCA 控制箱管路圖
AIR HOSE PLUG DIAGRAM FOR TCA CONTROL BOX

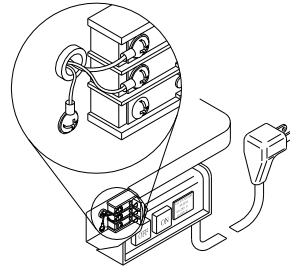


TCA 控制箱接線圖

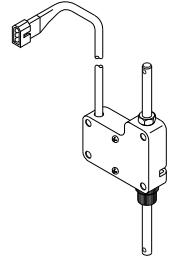
WIRING DIAGRAM FOR TCA CONTROL BOX



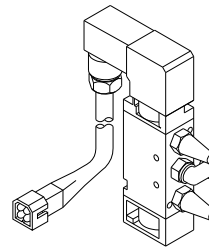
① 電源線
Power line



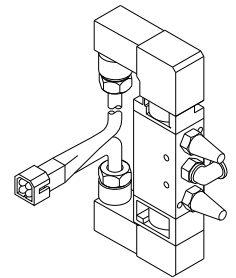
② E6-2 腳踏開關
Pedal switch



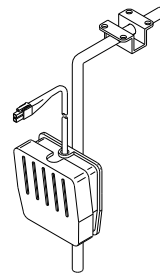
③ 電磁閥
Valve



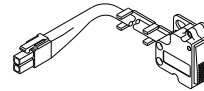
TCA-L25
TCA-M45



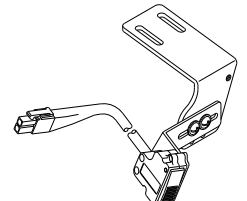
④ 膝動開關
Knee switch



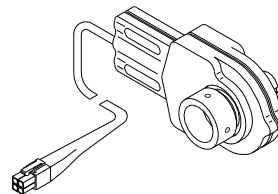
E11 左手觸動開關
E11 Left manual
switch
(選擇性配件)
(Optional parts)



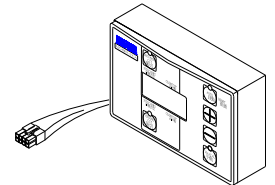
E12 右手觸動開關
E12 Right manual
switch
(選擇性配件)
(Optional parts)



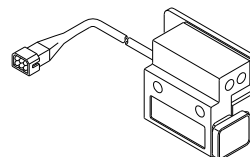
⑤ 計數器
Synchronizer

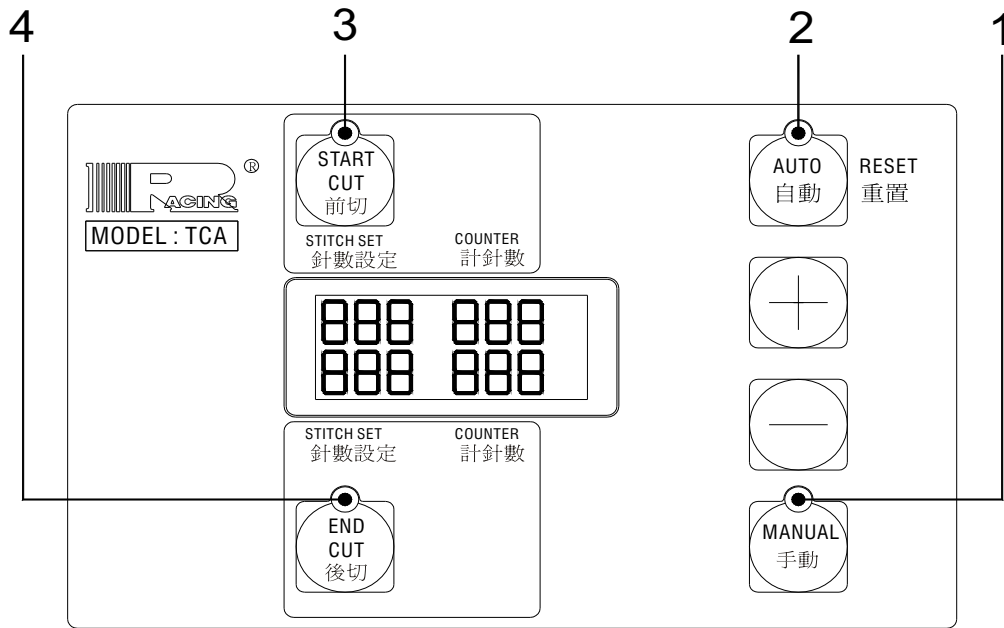


⑥ 控制面板
Control panel



⑦ 光電感應自動切帶開關
Auto cutting by photo-sensor





- 1 手動切刀
 - 2 自動切刀：設定針數累計到達時自動切刀
 - 3 前切：布料前端切刀
 - 4 後切：布料後端切刀
- 1 MANUAL
 - 2 AUTO: Auto cut when reach the set stitch number.
 - 3 START CUT : Cut at material front position.
 - 4 END CUT : Cut at material end position.

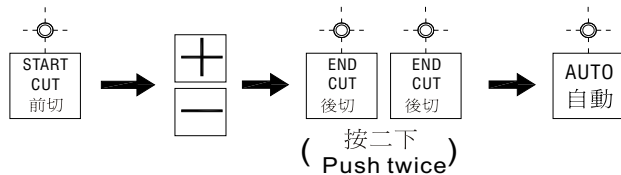
手動切刀操作說明 Operation guide for MANUAL



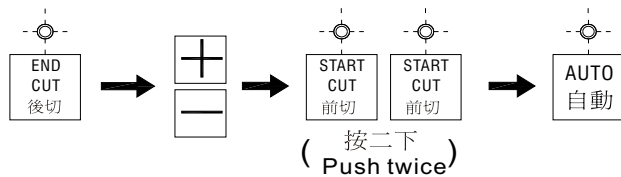
自動切刀操作說明 Operation guide for AUTO

(在自動切刀的模式下,亦可同時使用手動切刀)
(Manual function is also available under Auto mode.)

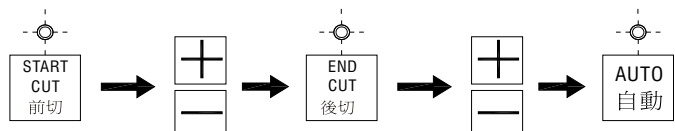
例一：前切
Example 1 : Start cut



例二：後切
Example 2 : End cut

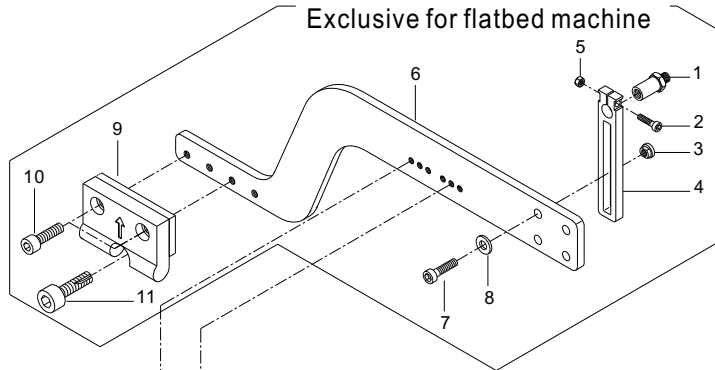


例三：前後切
Example 3 : Start cut and end cut

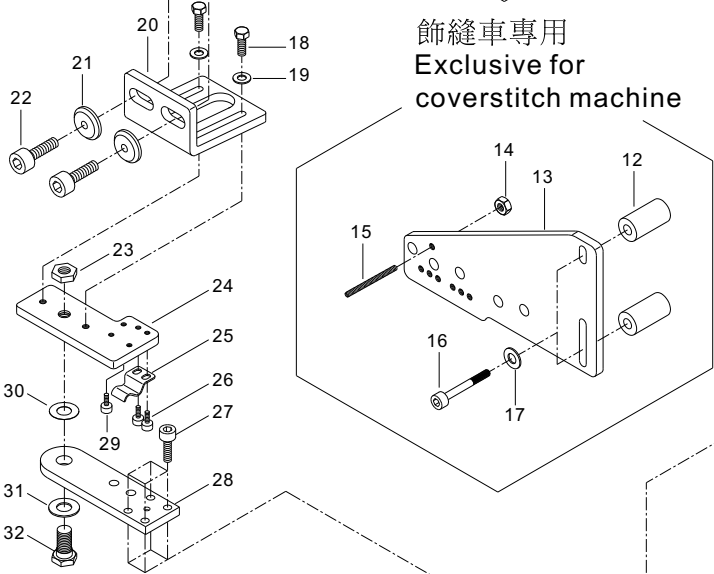


TCA-L25 / M45 / H50 / X65零件圖
PARTS LIST FOR TCA-L25 / M45 / H50 / X65

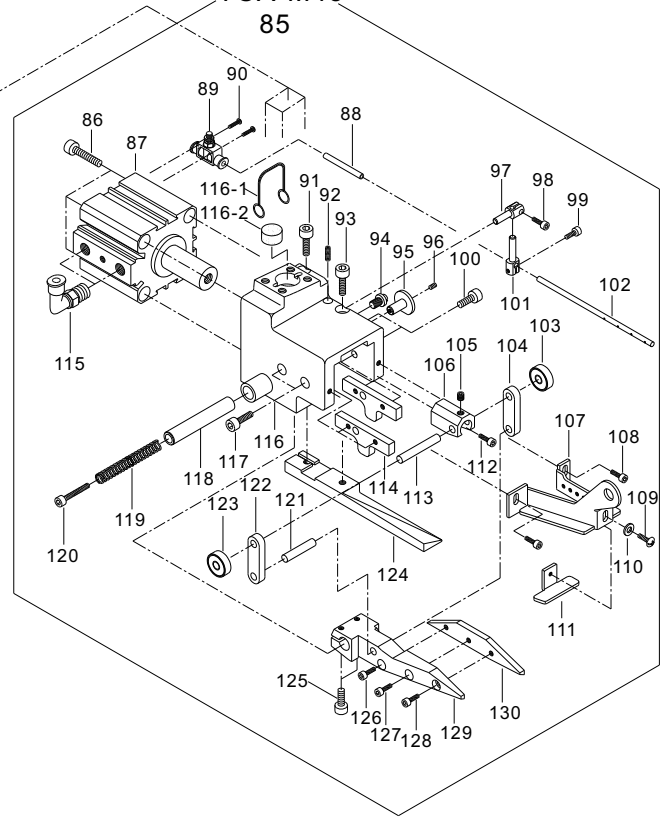
平床車專用
Exclusive for flatbed machine



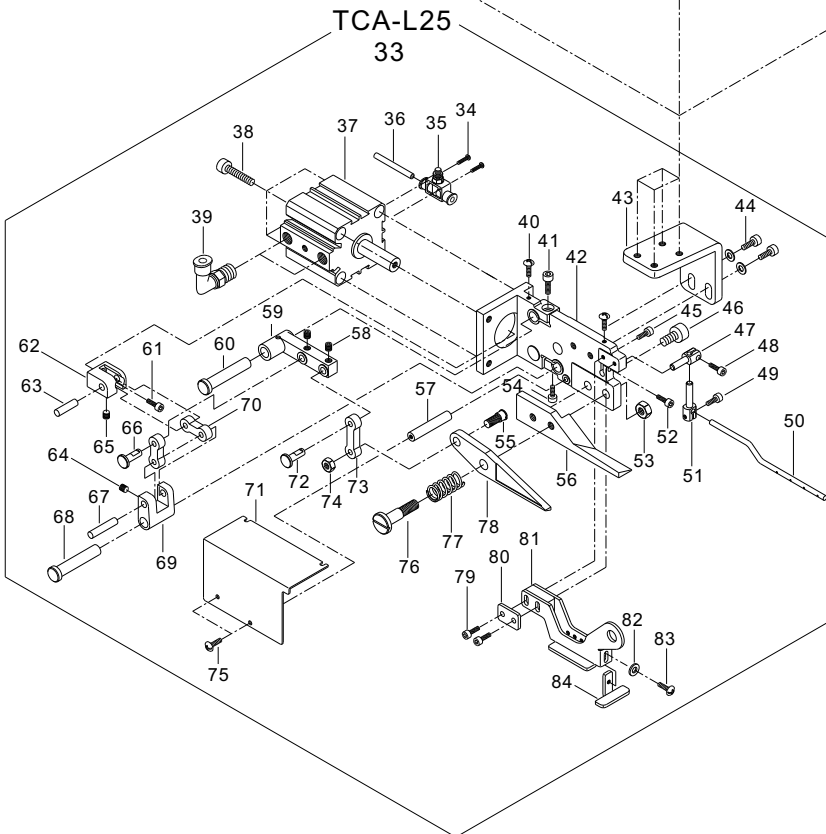
飾縫車專用
Exclusive for coverstitch machine



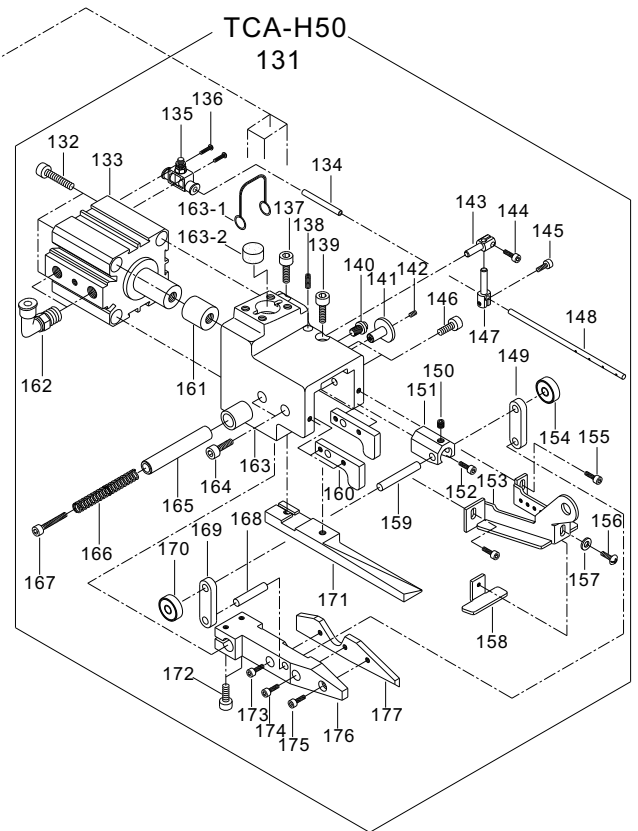
TCA-M45
85



TCA-L25
33

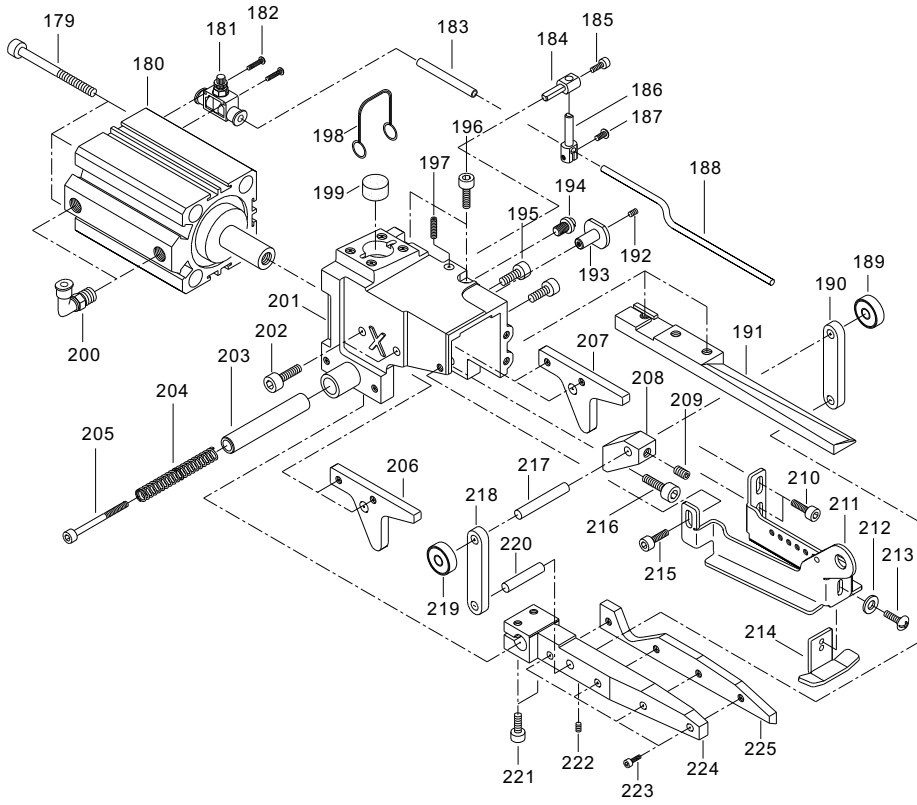


TCA-H50
131

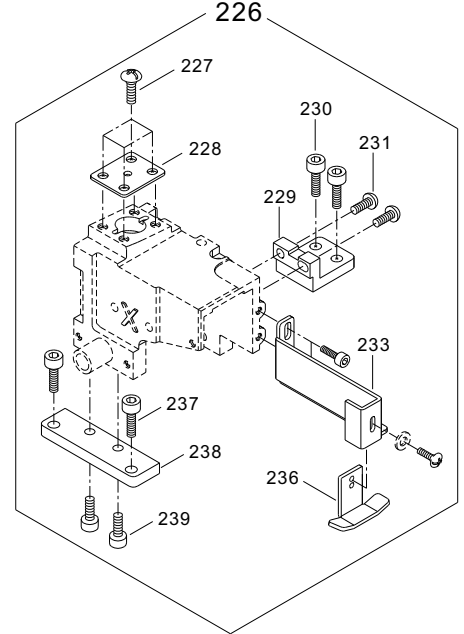


TCA-L25 / M45 / H50 / X65 零件圖
PARTS LIST FOR TCA-L25 / M45 / H50 / X65

TCA-X65
178



固定在車上
Fix on machine



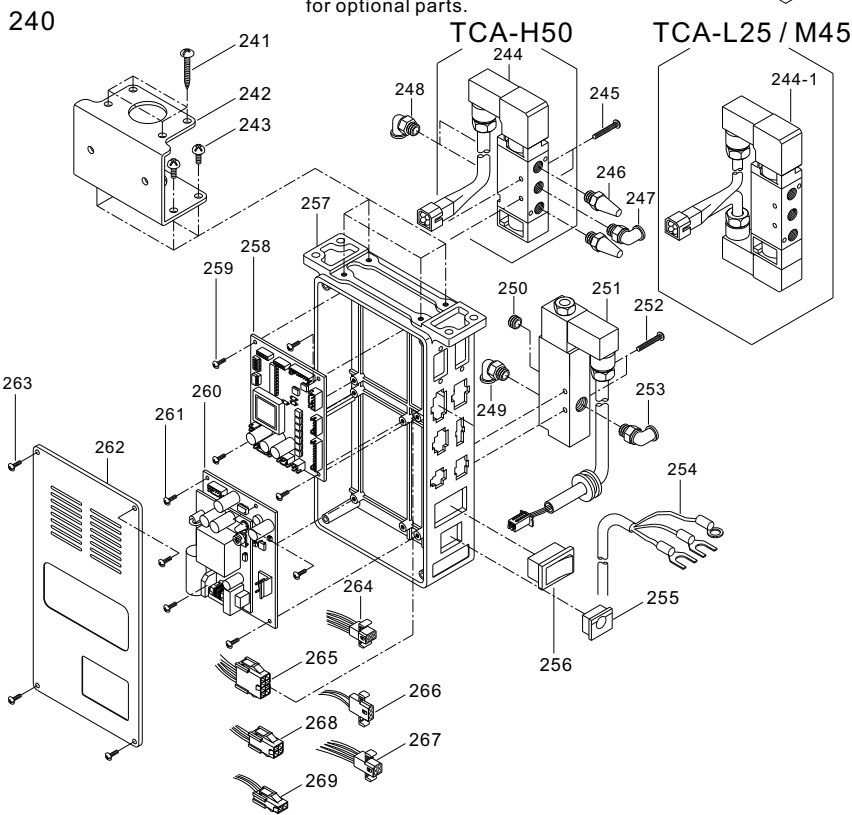
2014.11.17

TCA-L25 / M45 / H50 / X65 零件圖
PARTS LIST FOR TCA-L25 / M45 / H50 / X65

記號說明
Mark description

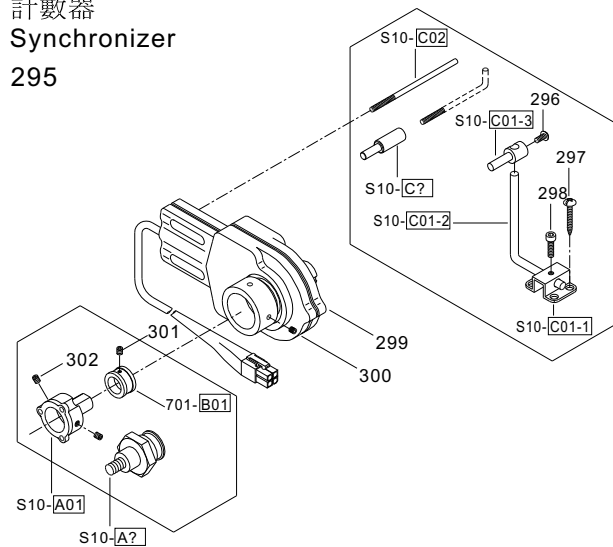
□ 選擇性配件,請告知針車廠牌機型
Please indicate sewing machine model No.
for optional parts.

○ 選擇性配件
Optional parts



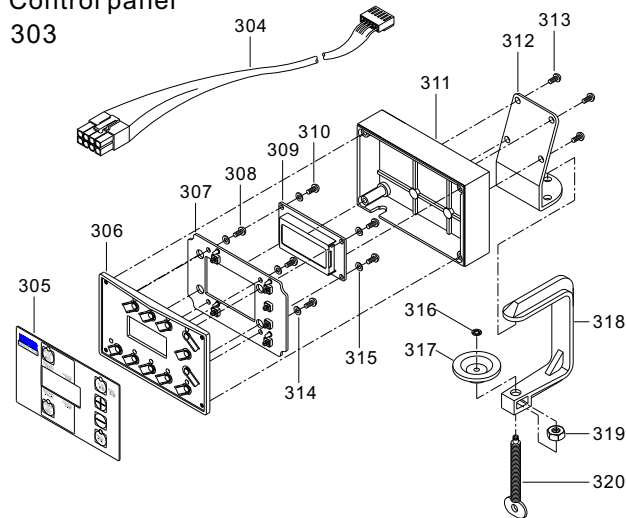
計數器
Synchronizer

295



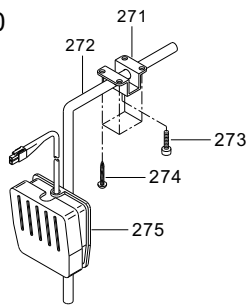
控制面板
Control panel

303



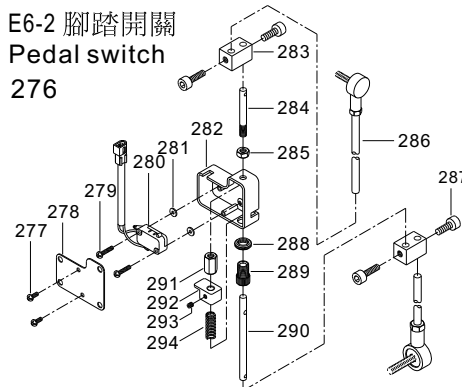
E8 膝動開關
E8 Knee switch

270



E6-2 腳踏開關
Pedal switch

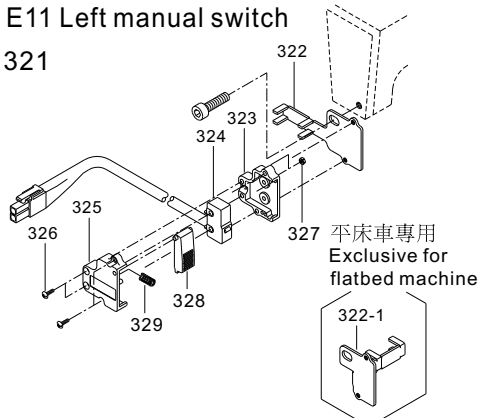
276



選擇性配件
OPTIONAL PARTS

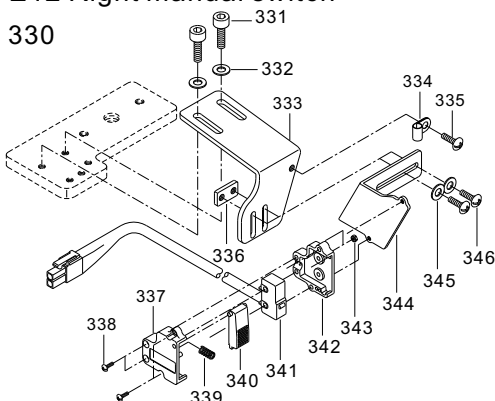
E11 左手觸動開關
E11 Left manual switch

321



E12 右手觸動開關
E12 Right manual switch

330



光電感應自動切帶開關
Auto cutting by Photo-sensor

347

