

PRODUCT CATALOGUE 2023



LAKHANPAL INDUSTRIES

Mfrs. & Exporter of Portable Bag Sewing Machine, Domestic & Industrial Sewing Machine, Overlock Sewing Machine, Accessories & Parts

Welcome to **LAKHANPAL INDUSTRIES, INDIA** top manufacturer and Exporter into the line of Portable Bag Sewing Machines (Single and Double Needle), Domestic and Industrial Sewing Machines, Overlock Machines and allied Machines with accessories and parts, started in the year 1994. LPI, a CE Certified and ISO 9001:2015 Certified Company. 70% of spares and accessories are manufactured in house. It is incessant belief in providing quality products and service that has earned LPI its creditable recognition in the industrial sewing machines market.

ABOUT US

LPI was the first to manufacture and introduce portable Double Needle Double Thread bag closers in India, which are presently spread almost all over the world including Latin American Countries, North America, Middle East, European Union, ECOWAS countries and Far Eastern countries as well.

OUR MISSION

Lakhanpal Industries mission is to combine the best in with specialized inventing capabilities of new products and increase valuable experience in Machine items to offer to their clients Complete Machine Product Solutions at very Competitive Prices as well as timely delivery.

INFRASTRUCTURE

We are manned by a well-equipped production unit which are updated time to time and off late increased our production manifold keeping in view the ever-increasing demand of our various model of machines, accessories and parts etc. The factory is located in Ludhiana (which is also known as the Manchester of INDIA), in the heart of the industrial hub of INDIA.

OUR BRANDS



HEAD OFFICE :- #5310 , Old Police Chowki Road, Near Kalgidhar Marg, New Shimlapuri, Ludhiana-141003. (Punjab, India)

BRANCH OFFICE :- #4931/3A, St. No. 7, Old Police Chowki Road, New Shimlapuri, Ludhiana-141003.(Punjab, India)

FACTORY:- Near Kapson Dharam Kanda, Industrial Area C, Jaspal Bangar, Ludhiana-141122. (Punjab, India)

PURCHASE

Mr. Harpreet Singh (+91 98557-21836)

PRODUCTION & MARKETING (INDIA)

+91 97812-41836 (Mr. Amandeep Singh)

+91-9781241836 WHATSAPP

FOREIGN EXPORT MARKET

+91-82880-54932 (Mr. Mohan)

+91-96460-98097 WHATSAPP

CUSTOMER CARE:-

+91-97501-13013

WEBSITE:-

www.lakhanpalinds.com

Email- lakhanpallpi@gmail.com

OUR PRODUCTS

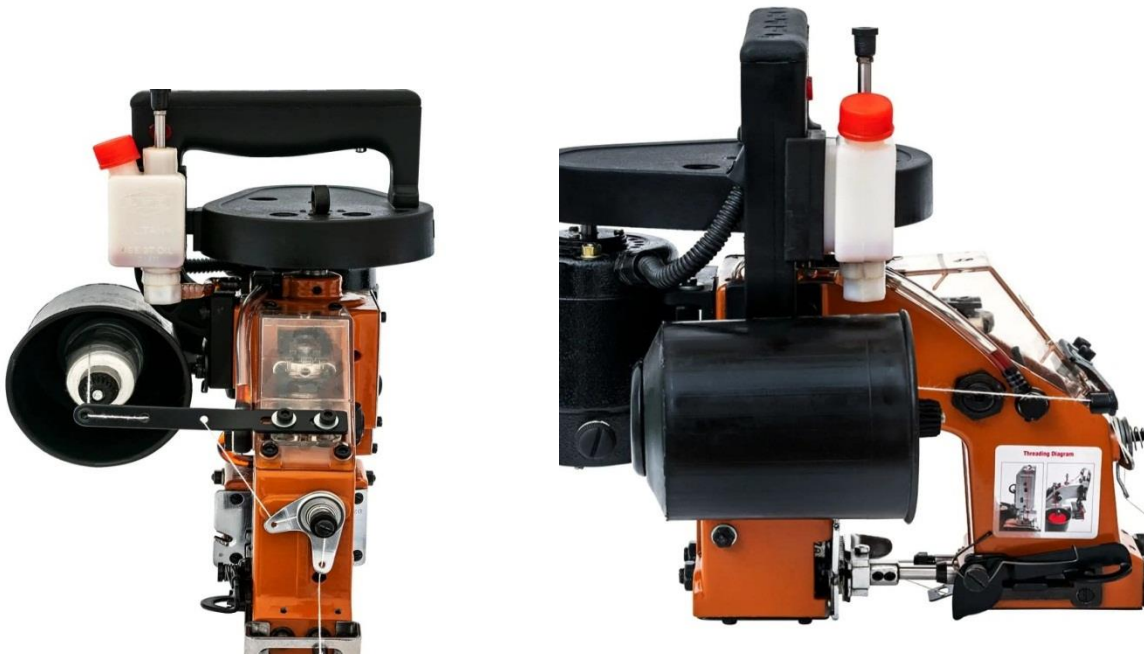
- **Portable Single & Double needle Bag Sewing Machines**
- **Table Top Bag Sewing Machines (Single & Double thread)**
- **Domestic and Industrial Sewing Machines**
- **Button Pressing machine and Button Covering machines**
- **Overlock Machines**
- **Bag closing Threads**
- **Sewing Machine Thread**
- **Sewing Machine Accessories and Parts**
- **Bag Sewing Machine Parts**

BAG SEWING MACHINES

1) MODEL L1 (Single Needle Single Thread)



FRONT VIEW



SIDE VIEW

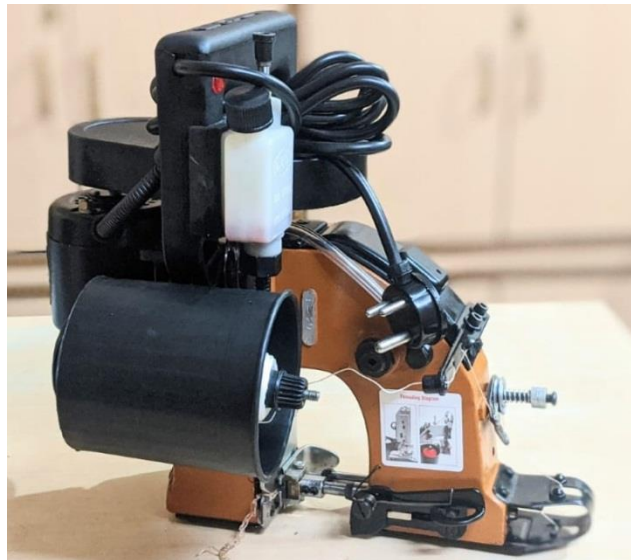
Specifications for Single needle Bag Closer Machines

MODEL	L1,DA,DA-6 and DA-1
Stitch Type	Single Thread Federal chain Stitch
Stitch	Single Needle Single Thread
Weight	6.1 Kg
Type of Bags	All kinds of Multi-Wall Paper, Kraft- Paper, Burlap, Cotton, PP\ PE, Hessian, Woven Polypropylene bags etc.
Stitch Length	3.5 Stitches per inch (25.4mm) Also available with 3 Stitches per Inch(25.4mm)
Needle	DBX1 200/25 Groz becert
Lubricant	2T Oil Only
Dimension	(17"W)x(11"D)x(14"H). 44cm x29cmx36cm.
Power	AC/DC 220V OR 110V
Motor	1/10 F.H.P 8000 RPM Also available with 1/8 F.H.P 10000 RPM
Cutter	Normal mechanical Cutter Working Outside Also available with Mechanical Cutter working Outside

2) Model DA (Single Needle Single Thread)



FRONT VIEW



SIDE VIEW

3) Model DA-1 (Single Needle Single Thread)

Extra Heavy Duty Model
Also available with DPX17 Needle



FRONT VIEW



SIDE VIEW

4) Model DA-6 (Single Needle Single Thread)



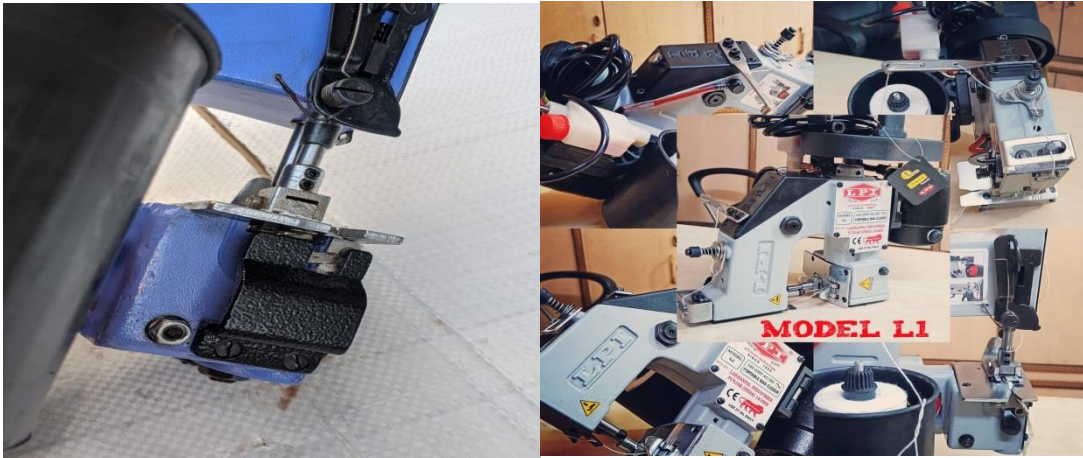
FRONT VIEW



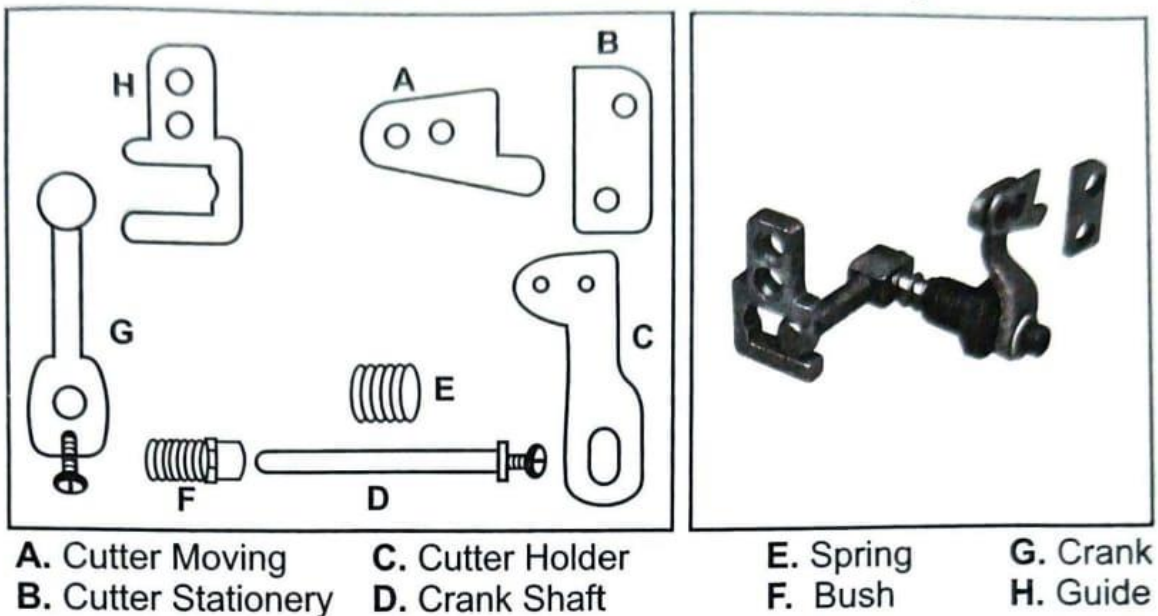
MODEL DA-6 WITH BEARING AND FOCUS LIGHT

5) MODEL L1-C and Model DA-C

In this Model L1 and DA are available with Outer Mechanical Cutter Moving Outside the body as shown in Figure.



New Semi Automatic Cutter Assembly



COMPARISON CHART BAG CLOSER

Models	L1	DA	DA1	DA6
Body Shell	Square Design with triangular Transparent very high Quality Plastic Top Cover	Round Body with Round Nylon top Cover	Square design with Metal Top Cover Slotted	Square Design with Squared Shaped top Cover
Needle	DBX1 200/25	DBX1 200/25	DBX1 200/25 DPX17 200/25	DBX1 200/25
Working Length of Needle bar	Approx. 8mm	Approx. 8mm	Approx. 8mm	Approx. 4mm
Lifter Assembly	Normal lifter mechanism	Normal lifter mechanism	Normal lifter mechanism	New Type Lifter mechanism
Lever Assembly	Same as L1,DA and DA-1	Same as L1,DA and DA-1	Same as L1,DA and DA-1	Different from all three Models
Packing Carton	Printed Export Packing	Printed Export Packing	Printed Export Packing	Printed Export Packing
Lever Working mechanism	Works on Angular Degree 5/8 threaded Stud	Works on Angular Degree 5/8 threaded Stud	Works on Angular Degree 5/8 threaded Stud	Works on Ring and Bushes having Degree matching.

6) Bag Closer Model DEDA (double needle double thread)



7) Bag Closer Model DEDA-6 (double needle double thread)



8) Model L2 (double needle double thread)



MODEL	DEDA , L2 and DEDA-6	
Stitch Type	Parallel Stitching of Federal Chain Stitch	
Stitch	Double Needle Double Thread	
Weight	6.7 kg	
Type of Bags	All kinds of Multi-Wall Paper, Kraft- Paper, Burlap, Cotton, PP\ PE, Hessian, Woven Polypropylene bags etc.	
Stitch Length	3.5 Stitches per inch (25.4mm) Also available with 3 Stitches per Inch(25.4mm)	
Needle	DBX1 200/25 Groz beckert	
Lubricant	2T Oil Only	
Dimension	41X33X41 cms	
Power	AC/DC 220V OR 110V	
Motor	1/10 F.H.P 8000 RPM Also available with 1/8 F.H.P 10000 RPM	
Cutter	Normal mechanical Cutter Working Outside Also available with Mechanical Cutter working Outside	

Table Top Bag Sewing machines (Single Needle and Double needle)

Single Needle Bag Closing machine with Motor and Regulator DA Tex M

Double Needle Bag Closing machine with Motor and Regulator DEDA Tex M

NOTE: These Two Models are also available in DA-6, DA-6B, DEDA-6 and DEDA-6B Designs also.



DA TEX
(Only head without Motor)



DEDA TEX M
(Head with motor and Regulator)

Domestic and Industrial Sewing Machines

1) Domestic sewing machine top



TAILOR MODEL

Features :

- Heavy Duty Sewing Machines
- Quick Action Lever Release
- Minimum maintenance for long life
- Operated with Hand attachment
- Oscillating Shuttle Type takeup System
- Auto Trip Bobbin Winder

2) Industrial Sewing machines 95T10 Model



MODEL 95T-10

Features :

- Lift Motion type Knee Lifter Mechanism
- High Speed Industrial Sewing machine for Professional use
- Balanced Rotary Hook and Spiral bevel gears
- Pressure Foot can be Controlled by Hand or by Special knee Lifter
- Quick Action Lever Release
- 2000 Stitches Per Minute



Colorful Packing of 95T-10

Button Pressing Machine and Button Covering machine



Model CIN 250

- With Two Die Sets
- Stoving and Electroplating Finishing
- Easy to Work
- Ideal for Production work
- Also Used with Pedal
- This Machine also Cover Buttons for Lady suit, Sofa Set,Caps Etc



Models CIN360 and CIN1001 are also available

Overlock Machine



MODEL 81-6

TECHNICAL FEATURES:-

- Pressure Foot Lift : upto 5mm
- Stitch Length : upto 3.2 mm
- Stitch width : 3 to 4 mm
- Needle : DC X 1 #11,14,16,18



Overlock with Side Motor Attach

Polyester Thread For Bag Closing Machine



Articles available 12/3s, 12/4s, 10/4,6/20,8/3,12/5
100% POLYESTER THREAD

Other Threads available –

Polypropylene Thread Double Twisted High Strength Thread for Bag Closing Machine



Sewing Machine Accessories and Parts

Sewing Machine Accessories Includes following Items :

- Sewing Machine table
- Sewing Machine Stand
- Sewing machine motor

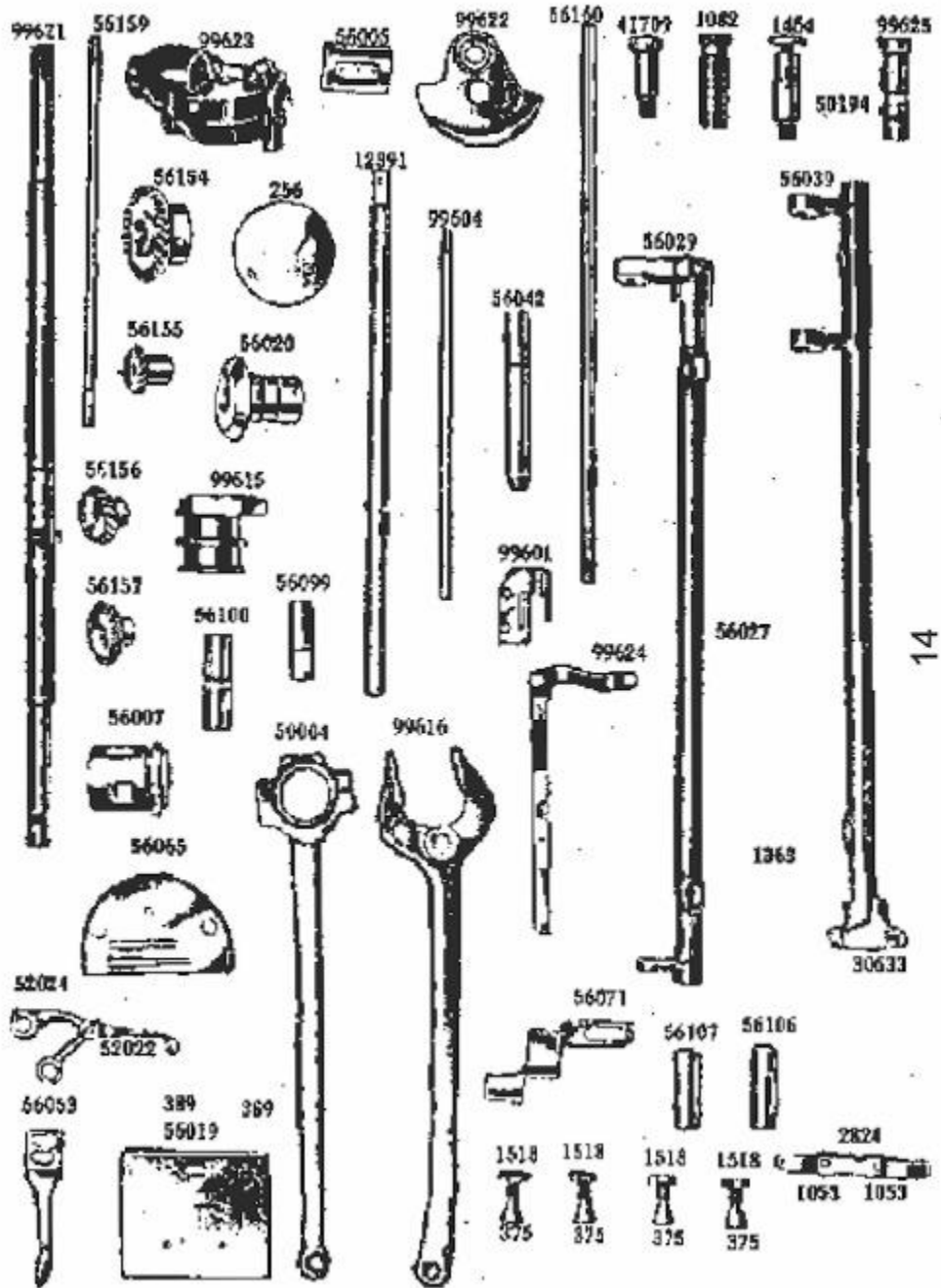


Sewing Machine Stand and Table



Sewing Machine Motor

Sewing Machine Parts



SR NO.	ITEM NAME
1	Arm Shaft
2	Lath 2816
3	Lath 15297
4	C.C.Road (Santry)
5	Feed Fork (Chimta)
6	Feed Cam
7	Lattoo
8	Wheel Bush
9	Neck Bush
10	Sham Bush
11	Stop Motion
12	Stop Motion Washer
13	Needle Plate
14	Slide Plate
15	Pressure Bar
16	Needle Bar
17	Gear Rod (Large)
18	Gear Rod (Small)
19	Link Stud
20	Spring Pressure Bar
21	Spring Chall
22	Bracket Set
23	Pressure Bar Cap
24	Bush Set Of 6 Pcs
25	Needle Clamp (Chutki)
26	Feed Dog (Dandral)
27	Feed Bar (Chimti)
28	Rooler Feed Bar
29	Lifter
30	Lifter Pin
31	Centre Large-4
32	Centre Small-2
33	Screw Santry-4
34	Screw All (Set)
35	Takli
36	Lever (Kukkar)
37	Bracket Patti
38	Shuttle Stopper
39	Chall
40	Face Plate
41	Spool Pin Holder
42	Greece Cup
43	Bobbin Winder
44	Oil Cup-2
45	Oil Tube
46	Brake Set
47	Balance Wheel
48	Stamp
49	Three Hole
50	Tar Set
51	Take Up Lever
52	Tension
53	Gear Set
54	Pressure Foot
55	Needle

Bag Sewing Machine Parts



Motor D901



Armature D901-1



Cam DE310



D400 Pressure Foot

Needle bar Guard D101



Handle Complete D800

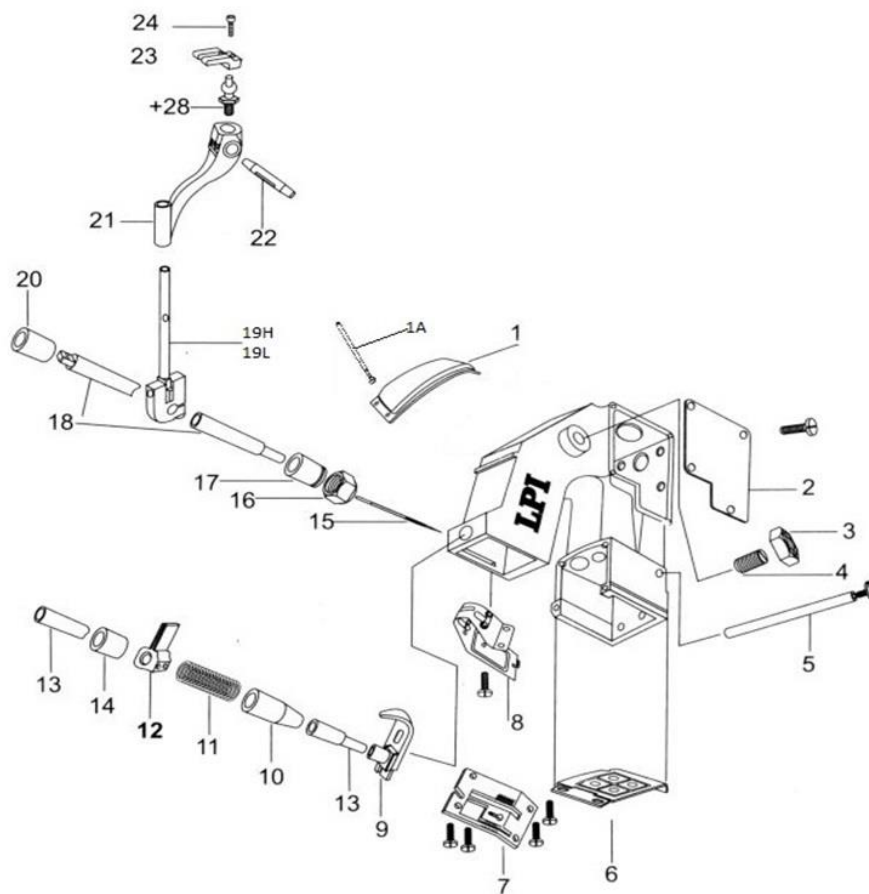


Block Set D200



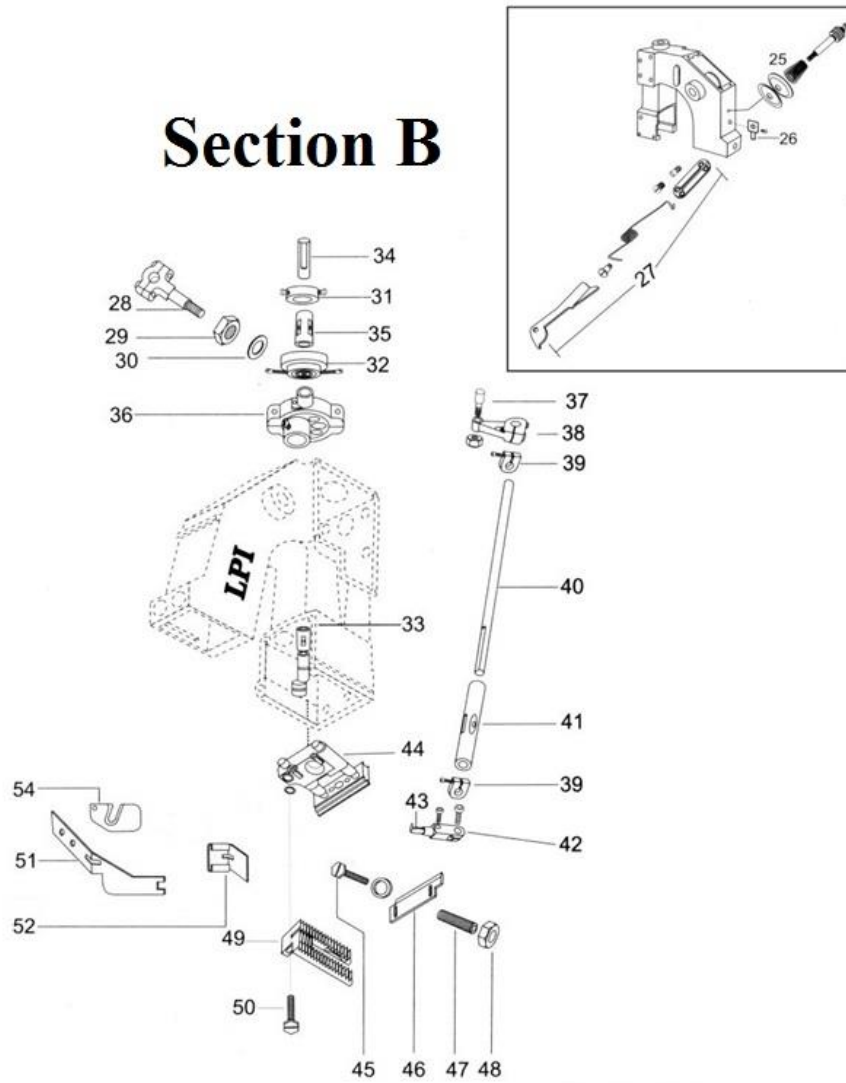
Feed Dog D203

Section - A



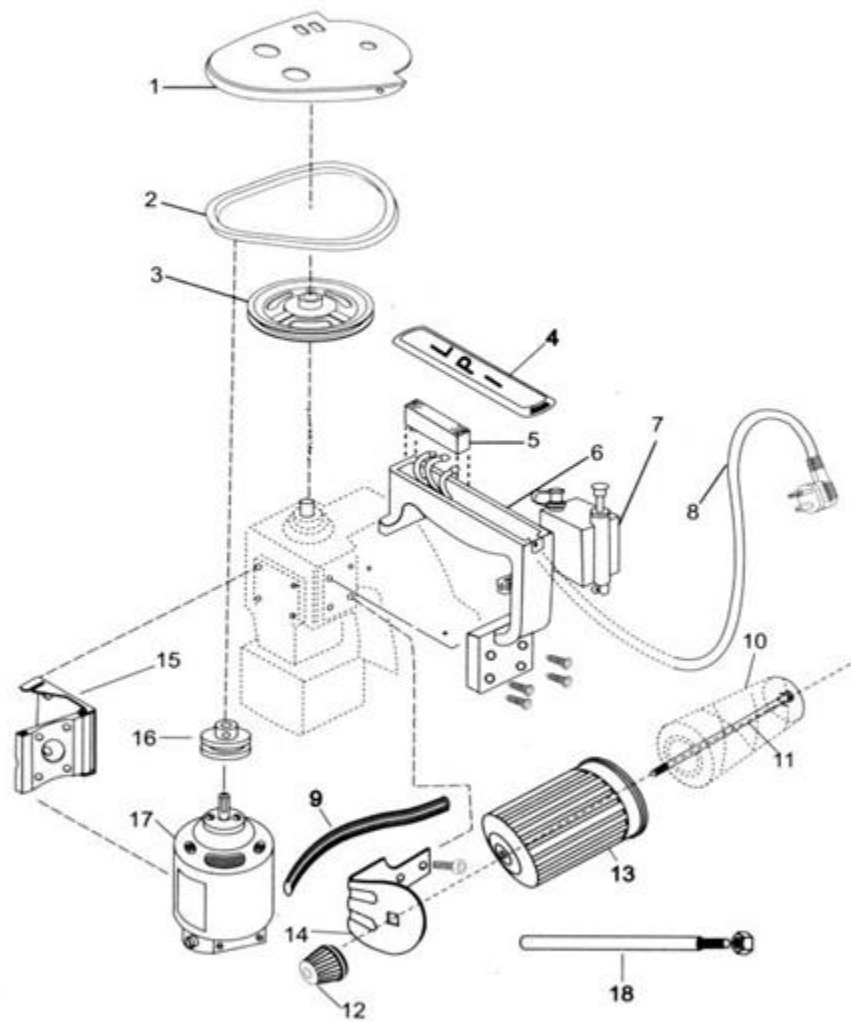
SR.NO.	PART NO.	NAME	Section A	QTY
1	D119	Top Cover	1	1PCS
2	D119 SET	Top Cover With Thread Rod		1SET
3	D120	Thread Rod	1A	1PCS
4	D103	Name Plate	2	1PCS
5	D513	Lock Nut For D512	3	2PCS
6	D512	Bearing Cone Stud (5/8)	4	2PCS
7	D512 SET	Bearing Cone Stud With Nut (5/8)		1SET
8	D214	Block Pin (Carrier Slide)	5	1PCS
9	D102	Looper Cover (Block Kabja)	6	1PCS
10	D102-1	Looper Cover Hing Type (Block Kabja)		1PCS
11	D210	Throat Plate (Pattri)	7	1PCS
12	D210C	Throat Plate With Cutter (Pattri)		1PCS
13	D101	Needle Bar Guard (Front Cover)	8	1PCS
14	D400	Pressure Foot LPI	9	1PCS
15	D413	Pressure Bar Bush Lower	10	1PCS
16	D414	Pressure Bar Spring	11	1PCS
17	D405	Pressure Bar Clamp	12	1PCS
18	D404	Pressure Bar Only	13	1PCS
19	D404 SET	Pressure Bar With Bush Set		1SET
20	D412	Pressure Bar Bush Upper	14	1PCS
21	D05	Needle Gb	15	1PCS
22	D501	Needle Lock Nut	16	1PCS
23	D504	Needle Bar Bush Lower	17	1PCS
24	D500	Needle Bar Only	18	1PCS
25	D500 SET	Needle Bar With Bush Set		1SET
26	D502H	Clamp Needle Bar Heavy	19	1SET
27	D502L	Clamp Needle Bar Lite		1SET
28	D503	Needle Bar Bush Upper	20	1PCS
29	D505	Lever Comp.	21	1PCS
30	D511	Stud For Lever (Taper Killi)	22	1PCS
31	D208	Guide	23	1PCS
32	D208-1	Guide Bolt 4x12 (H103212)	24	1PCS
33	D113N	Tension Set New	25	1SET
34	D113O	Tension Set Old		1SET
35	D113-1	Tension Rod With Nut		1PCS
36	D113-2	Disc For D113 (Thalli)		1Gross
37	D113-3	Spring For D113		1PCS
38	D113-4	Nut For D113		1PCS
39	D113W	Tension Set Without Patti		1SET

Section B



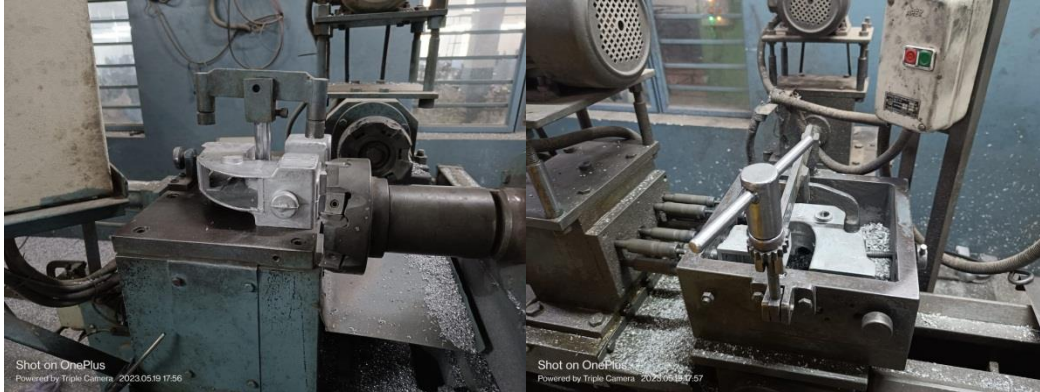
PART NO.	NAME	Section B	QTY
D406 SET	Lifter Set	27	1SET
D406-1	Lifter Lever		1PCS
D406-2	Lifter Spring		1PCS
D406-3	Lifter Big Screw		1PCS
D406-4	Lifter Eyelet (Patti)		1PCS
D406-5	Lifter Stopper Screw		1PCS
D406-6	Screw For D406		1 Gross
D607	Connecting Rod Small (Santri Small)	28	1PCS
D608	Connecting Rod Nut	29	1PCS
D609	Connecting Rod Washer	30	1PCS
D603	Main Shaft Ring Round	31	1PCS
D310	Came	32	
D602	Main Shaft Bush Front	33	1PCS
D600	Main Shaft	34	1PCS
D600 SET	Main Shaft Set		1SET
D601	Main Shaft Bush Rear	35	1PCS
D610	Connecting Rod Big	36	1PCS
D605 SET	Connecting Rod Set		1SET
D308	Came Stud Follower (Came Dodi)	37	1PCS
D307	Arm Came Follower	38	1PCS
D304	Coller Looper Shaft	39	1PCS
D303	Shaft Looper With Collar	40	1PCS
D303 SET	Looper Shaft With Bush		1SET
D306	Bushing	41	1PCS
D301	Holder Looper	42	1PCS
D300	Looper	43	1PCS
D200	Feed Dog Carrier Block And Slide	44	1SET
D205-1	Lock Bolt For D205	45	1GROSS
D205	Slide Block Adjusting	46	1PCS
D206	Stud Slide Block	47	1PCS
D206 SET	3/8 Stud With Nut Set		1SET
D209	Lock Nut For D206	48	1PCS
D203	Feed Dog	49	1PCS
D204	Screw Attaching For Feed Dog	50	1PCS
D701	Knife Bracket	51	1PCS
D702	Knife Moving	52	1PCS
D703	Knife Stationary	54	1PCS

Section - C



PART NO.	NAME	SECTION C	QTY
D105	Guard Belt (Belt Cover)	1	1Pcs
D105M	Guard Belt (Belt Cover) Metal		1Pcs
D909V	V-Belt Ecodrive	2	1Pcs
D910T	Timming Belt (T-Belt)		1Pcs
D910T	Timming Belt (T-Belt) PIX		1Pcs
D904	Machine Pully V	3	1Pcs
D905	Machine pully T		1Pcs
D802	Cover Switch	4	1Pcs
D806	Micro Switch	5	1Pcs
D800	Handle Only	6	1Pcs
D800C	Handle Complete With Belt Cover		1Set
D811	Oil Tank (Pump)	7	1Pcs
D808	3 Core Cable	8	1Set
D913-2	Flexible Pipe	9	1Pcs
D936	Lock Nut For D913-2 (Motor Nut)		
D810	Thread Cone	10	1Pcs
D804	Con Rod	11	1Pcs
D804 SET	Con Rod With Nut		
D805P	Con Rod Nut Plastic	12	1Pcs
D805M	Con Rod Nut Metal		1Pcs
D807	Thread Cone Cup	13	1Pcs
D815	Thread Stand (Con Patti)	14	1Pcs
D906P	Kabja Plastic & Aluminium	15	1Pcs
D906A	kabja Aluminium		1Pcs
D902	Motor Pully V	16	1Pcs
D903	Motor Pully T		1Pcs
D901	Motor INT	17	1Pcs
D901-1	Armature INT		1Pcs
D901-3	Carbon Holder Medium		1Pcs
D900	Motor CONT		1Pcs
D900-1	Armature CONT		1Pcs
D900-3	Carbon Holder Cont (XD)		1Pcs
D901-10	Cap Medium		1Pcs
D903-3	Cap Cont		1Pcs
D919N	Carbon Brush + Spring Square) Normal		1Pair
D919XD	Carbon Brush + Spring Square) XD		1Pair

Infrastructure



Special Purpose Machines for Machining of Body Shell



Feed Dog in Process

Special Purpose Machine for Body Shell



Machine Shop



Machine Shop



Paint Shop

Colors Available in Bag Closer machines :-

- **Sandle Yellow**
- **Munshell grey**
- **Blue**
- **Structure Red**
- **Structure Munshell Grey**

Other Colors also as per Demand

Paint Shop





Injection moulding Section



Bag Closer Part

Volume Capacity of Machines in 20 Feet and 40 Feet Container

Sr no.	Item name	Weight per Pkg.	Packing	20 ft	40ft
1.	Single Needle Bag Closer Machine	8.250 Kg	Single Piece Thermocol Packing	650 pcs	1400 pcs
2.	Double Needle Bag Closer Machine	9.00 Kg	Single Piece Thermocol packing	532 pcs	1134 pcs
3.	Domestic Sewing Machine top	14 Kg	Single Piece thermocol Packing	1032 pcs	2205 pcs
4.	Industrial Sewing machine Top	17 kg	Single Piece Thermocol packing	708 pcs	1512 pcs
5.	Sewing Machine Table	18 kg	4 Pieces packing in Master carton	1298 pcs	2772 pcs
6.	Sewing machine Stand	21 kg	2 Pieces packing in Master carton	754 Stand	1630 Stand
7.	Industrial Sewing Machine Table	23 kg	4 Pieces packing in Master carton	1062 table	2268 pcs
8.	Polyester Thread 200 grams	21 kg	100 Pieces in One Carton	65000 Pieces	140000 pcs
9.	Polyester Thread 1.5 Kg	16 kg	10 pieces in Master carton	7370 Cones	15750 cones
10	Button Machine	22 Kg	5 pieces in Master carton	4915 pcs	10395 pcs

THANK YOU

LAKHANPAL INDUSTRIES