

# PARTS BOOK

**KM-1080BL**

**KM-1082BL**

본봉 총합송 Post Bed  
자동 사절 재봉기



PME-070405

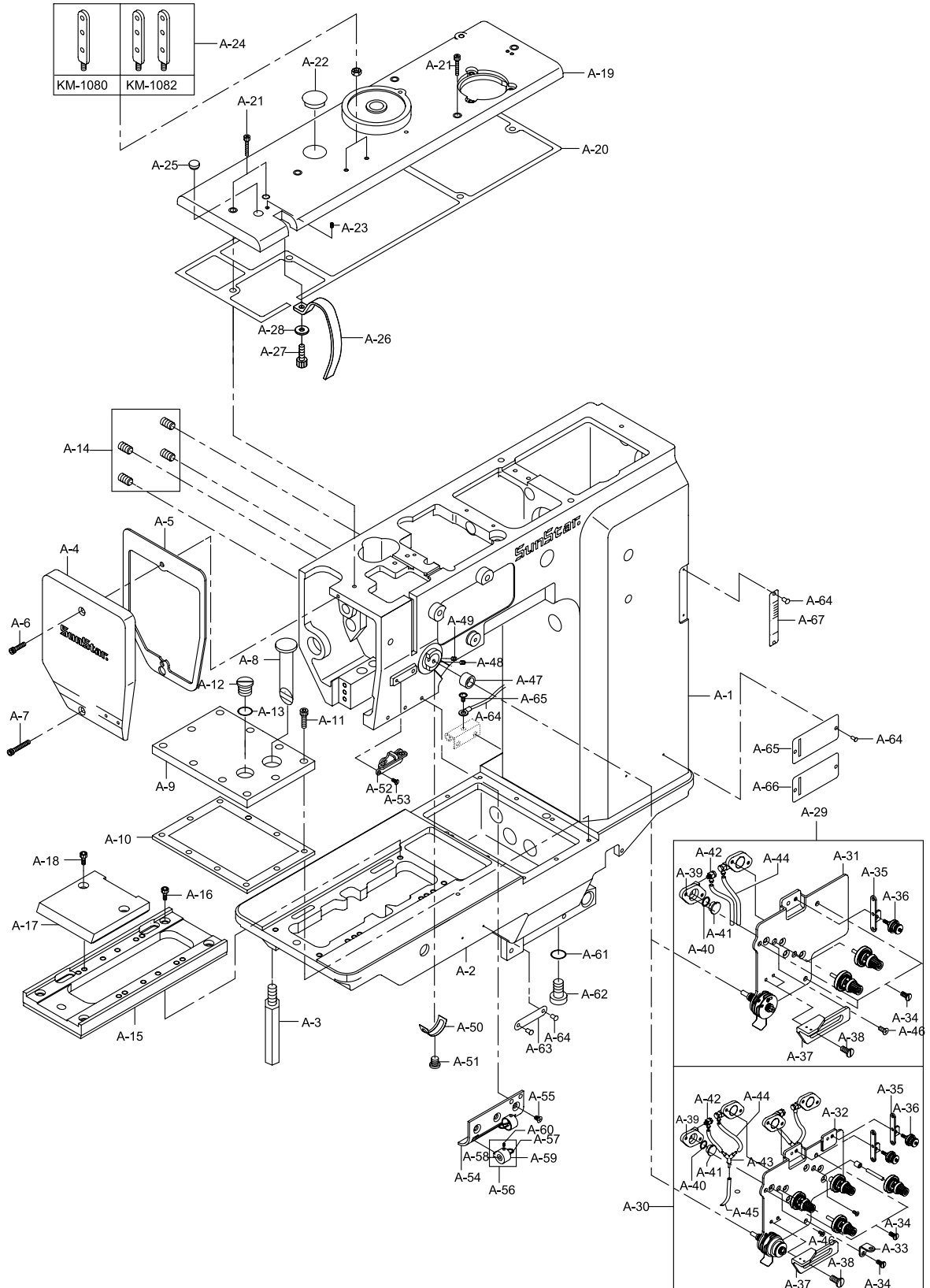
SUNSTAR MACHINERY CO., LTD.

# CONTENTS

## 목 차

<b>A</b>	Machine Body Mechanism 외장 관계 .....	4
<b>B</b>	Upper Shaft & Thread Take Mechanism 상축 및 실채기 관계 .....	8
<b>C</b>	Thread Winder Mechanism 실감기 관계 .....	12
<b>D</b>	Presser Foot & Knee Lifting Mechanism 노루발 및 무릎올림 관계 .....	14
<b>E</b>	Upper Feed Mechanism 상피드 관계 .....	18
<b>F</b>	Feed Mechanism 피드 관계 .....	22
<b>G</b>	Lower Shaft & Hook Mechanism 하축 및 훅 관계 .....	26
<b>H</b>	Saddle & Post Mechanism 새들 및 포스트 관계 .....	30
<b>I</b>	Thread Trimmer Mechanism 사절 관계 .....	32
<b>J</b>	Lubrication Mechanism 급유 관계 .....	34
<b>K</b>	Pneumatic Mechanism 공압 관계 .....	36
<b>L</b>	Function Switch Mechanism 기능 스위치 관계 .....	38
<b>M</b>	Accessories Mechanism 악세사리 관계 .....	40

본 책자는 Parts Book으로 제작되었으므로 메뉴얼로 사용 불가합니다.  
This is a parts book. It cannot be used as a manual.



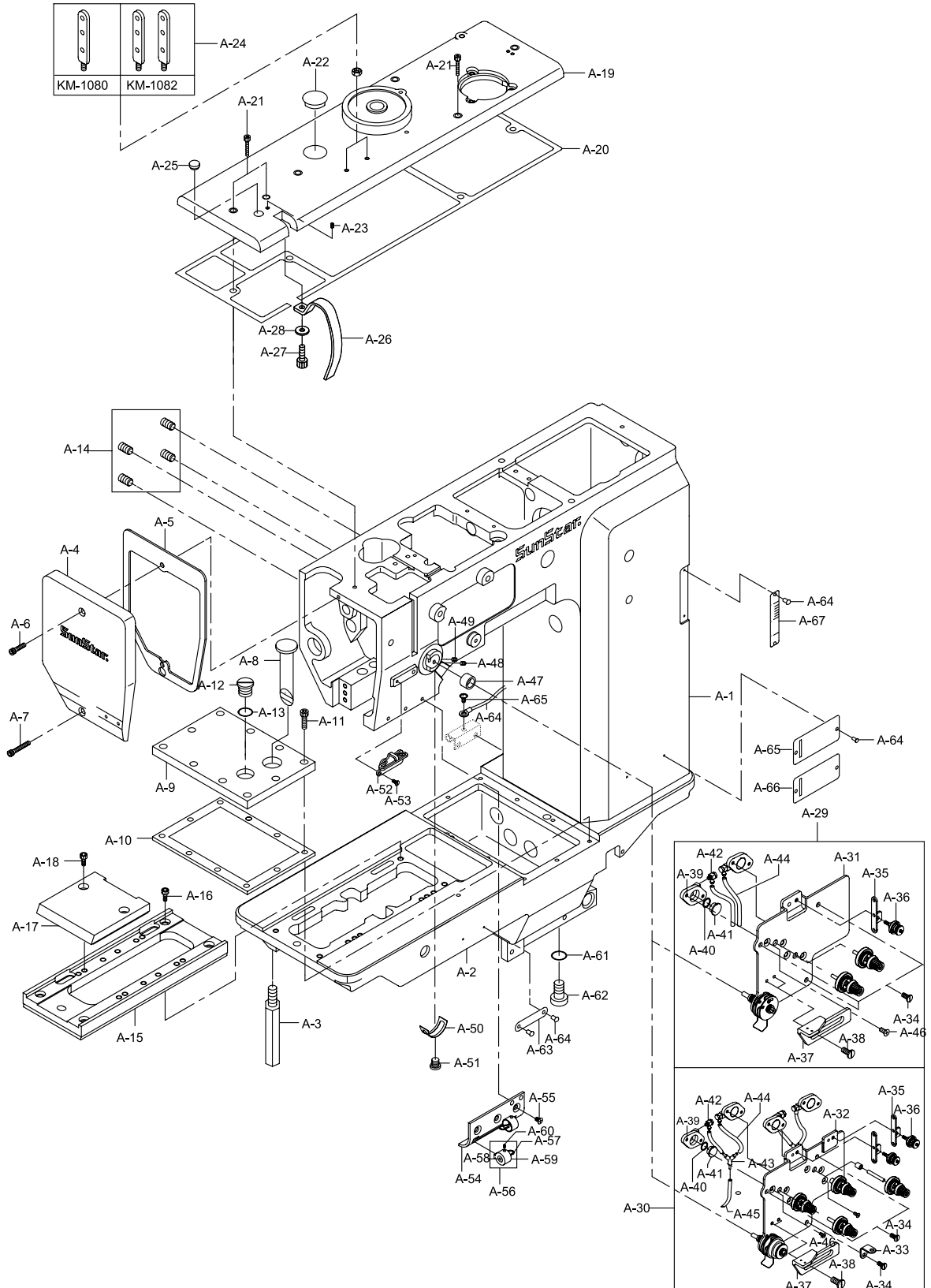
Ref. No.	Parts No.	note.	Name of Parts	部 号	Q' ty		Assembly No.
					1080	1082	
A-1	GP-019597,04		ARM		1	1	
A-2	GP-019598,01		BED		1	1	
A-3	01-061C-106L		Bed Support (M10xP1.5)		1	1	
A-4	GP-019626,02		Face Plate		1	1	
A-5	GP-019630,02		Gasket For Face Plate	가	1	1	
A-6	08076SC-4113		Screw (M5xP0.8, L=12)	上 ( )	1	1	
A-7	08062SC-4113		Screw (M5xP0.8, L=20)	下 ( )	1	1	
A-8	01-055A-106L		Oil Gauge		1	1	
A-9	GP-019722,00		Bed Cover		1	1	
A-10	GP-019723,00		Gasket For Bed Cover	가	1	1	
A-11	08076SC-4113		Screw (M5xP0.8, L=12)		10	10	
A-12	01-053S-106L		Screw For Oil Gate		1	1	
A-13	01-054W-106L		Washer		1	1	
A-14	SC-0354-7500		Screw (M6xP1, L=8)	(無頭) (Head 背)	4	4	
A-15	GP-018710,02		Base For Saddle		1	1	
A-16	08037SC-120D		Screw For Base (M6xP1, L=8,		4	4	
A-17	GP-020435,01		Base Cover For Saddle		1		
A-18	08037SC-120D		Screw For Base Cover (M6xP1, L=		2		
A-19	GP-016690,03		Top Cover		1	1	
A-20	GP-016692,00		Gasket For Top Cover	가	1	1	
A-21	08062SC-4113		Screw (M5xP0.8, L=20)		5	5	
A-22	01-018M-9570		Rubber For Top Cover	(Climb - Device	1	1	
A-23	14044SC-4517		Screw(M8XP1.25)	Lamp	1	1	
A-24	01-016A-2350		Thread Guide Bar For Top Cover		1	2	
A-25	44-021R-7400		Rubber For Needle Bar Hole		1	1	
A-26	GP-016343,00		Cover For Thread Take-Up Lever		1	1	
A-27	SC-0211-7500		Screw (M4XP0.7)		1	1	
A-28	06-036W-3800		Washer		1	1	
A-29	AS-006492.00		Thread Tension Control Ass'y	(組)	1set		
A-30	AS-006493.00		Thread Tension Control Ass'y	(組)		1set	
A-31	GP-028164.00		Thread Tension Adjusting Plate		1		
A-32	GP-028127.00		Thread Tension Adjusting Plate			1	
A-33	GP-001594,00		Thread Guide	가		1	
A-34	SC-0200-4123		Screw (11/64" n=40)		3	3	
A-35	01-023C-106L		Arm Thread Guide (U)	(上) 가	1	2	
A-36	AS-000345.00		Arm Thread Guide Ass'y (U)	(上) (組)	1set	2set	
A-37	01-032C-106L		Arm Thread Guide		1	1	
A-38	01-029S-106L		ScREW 9/64" n=40		2	2	
A-39	AS-006645,00		Cylinder Ass'y	(組)	2set	4set	
A-40	GP-029148,00		Oil Seal For Piston		2	4	
A-41	GP-028128.00		Piston		2	4	
A-42	GP-029151.00		Cylinder Nipple		2	4	
A-43	GP-029211,00		Y-Type Terminal	Y-		2	
A-44	05A039S-811H		Urethane Hose ( 4, L=150mm)	( 4)		4	
A-45	05A039S-811H		Urethane Hose ( 4)	( 4)	2	2	
A-46	SC-000736,00		Screw (M4XP0.7, L=10)		4	8	
A-47	GP-028130,01		Bushing For Thread Tension Con		1	1	
A-48	04004MC-4517		Screw (M4XP0.7, L4)		1	1	
A-49	SC-000716,00		Screw (M5XP0.8, L5)		1	1	
A-50	01-019C-7400		Stopper For Thread Take-up Spr		1	1	
A-51	SC-A119-4119		Screw (11/64" n=40)		1	1	
A-52	01-023A-9570		Arm Thread Guide Ass'y (M)	(中)	1	1	
A-53	SC-A174-4122		Screw (11/64"n=40)	(中)	1	1	
A-54	GP-028345,00		Arm Thread Guide Bracket	가	1	1	
A-55	SC-A119-4119		Screw (11/64" n=40)	가	3	3	
A-56	AS-006525,00		Arm Thread Guide Ass'y	(組)	1	2	
A-57	GP-028351,00		Arm Thread Guide Link		1	2	



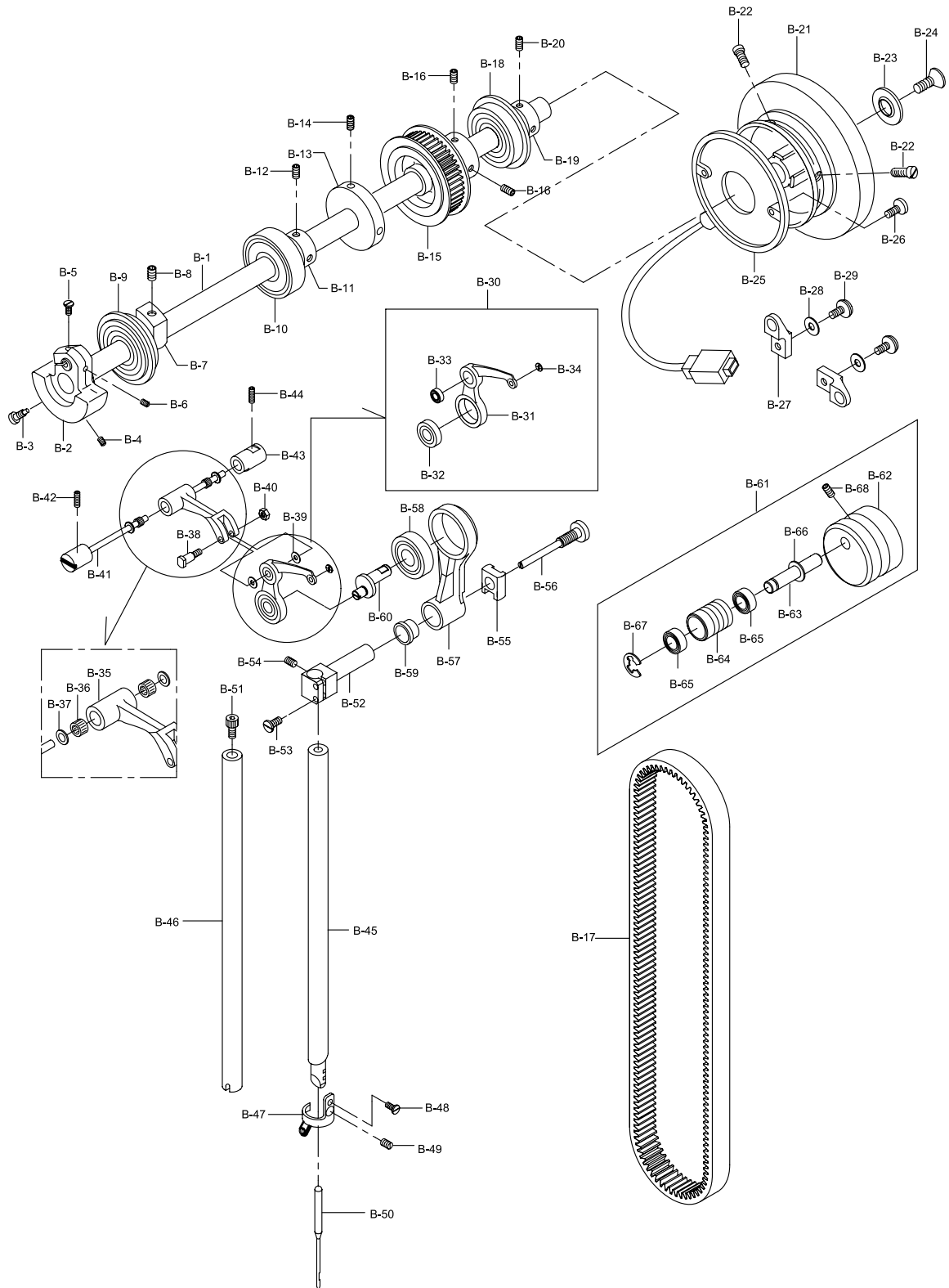
# A

## Machine Body Mechanism

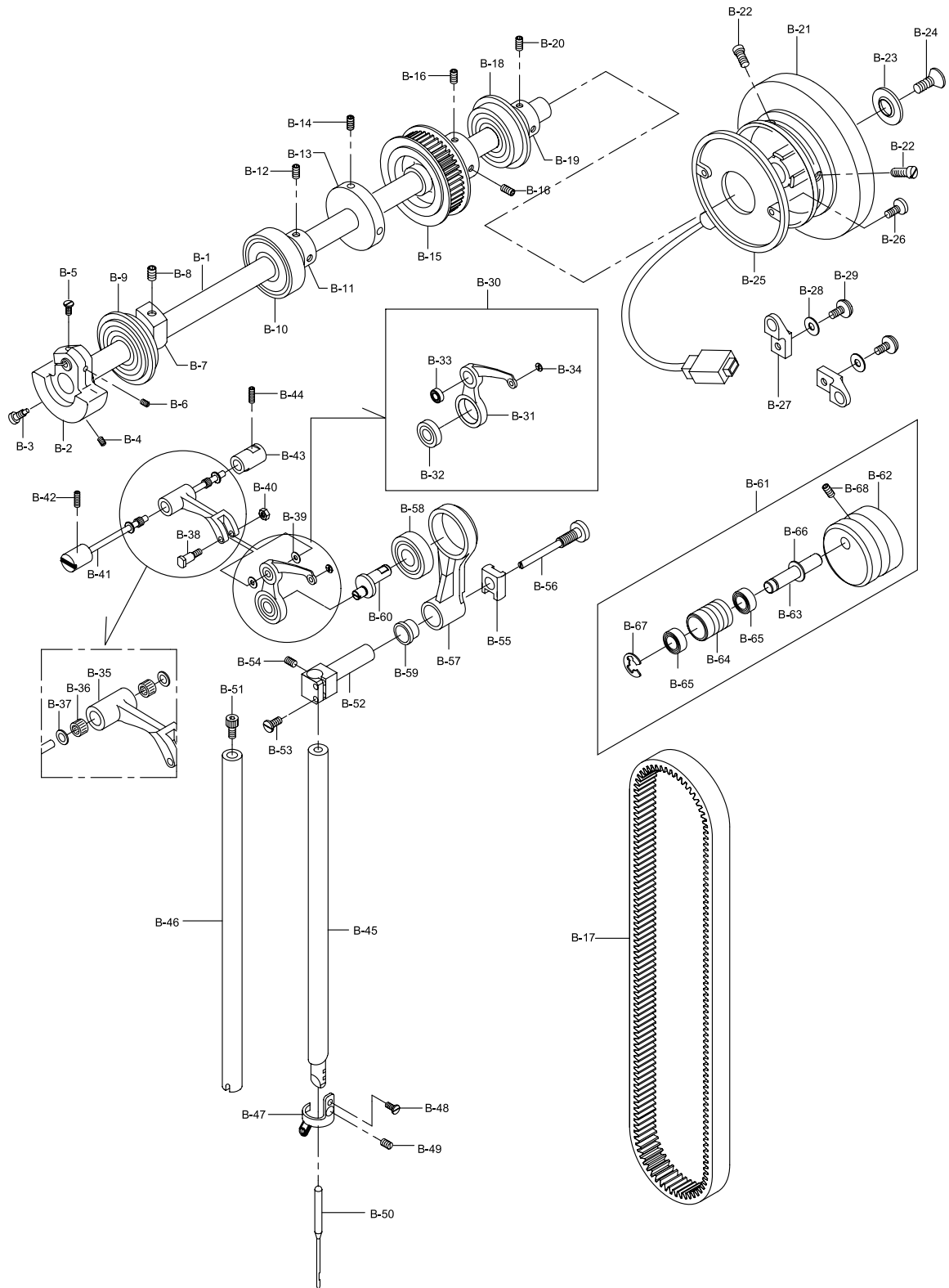
### 외장 관계



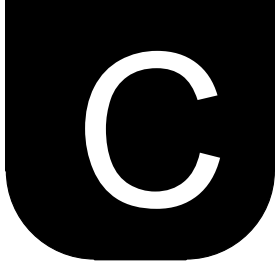
Ref. No.	Parts No.	note.	Name of Parts	단위	수량	Q' ty		Assembly No.
						1080	1082	
A-58	GP -028350,00		Arm Thread Guide Link Shaft			1	2	
A-59	GP -028346,00		Arm Thread Guide Body			1	2	
A-60	SC -0134 - 3900		Screw (1/8" n=44, L=3)			1	2	
A-61	GP -023918,00		Gasket for Oil Outlet Screw	가		1	1	
A-62	SC -000712,00		Screw for Oil Outlet			1	1	
A-63	01 -035P - 1370		Machine Number Plate			1	1	
A-64	01 -035P - 7400		Pin For Machine Number Plate			6	6	
A-65	GP -016626,00		Model Mark			1		
A-66	GP -016627,00		Model Mark				1	
A-67	GP -022571,02		Feed Adjusting Mark			1	1	
A-68	CA -000712,01		Earth Line			1	1	
A-69	04005MC - 3123		Screw (M4×P0.7, L=5)			1	1	



Ref. No.	Parts No.	note.	Name of Parts	품 명	Q' ty		Assembly No.
					1080	1082	
B-1	GP-016223,01		Upper Shaft		1	1	
B-2	GP-015705,01		Link Cam		1	1	
B-3	SC-0535-3710		Screw (9/32" n=28)	"A"	1	1	
B-4	SC-0100-3710		Screw (9/32" n=28)	"B"	1	1	
B-5	SC-000904,00		Screw (15/64" n=28)	"A"	1	1	
B-6	SC-A117-5607		Screw (1/4" n=40)	"B"	1	1	
B-7	GP-015711,00		Upper Shaft Balance		1	1	
B-8	SC-0167-7900		Screw ((M8xP1.25)	(無頭)	1	1	
B-9	02-007A-9570		Upper Shaft Baearing (F) [6204ZZC	前	1	1	
B-10	02-010A-106L		Upper Shaft Baearing (M) [62/22ZZ	中	1	1	
B-11	GP-015977,00		Bearing Bushing For Upper Shaft B	中	1	1	
B-12	SC-0317-2700		Screw (15/64" n=28)	中	2	2	
B-13	GP-016492,01		Bobbin Winder Driving Wheel		1	1	
B-14	05008MC-4517		Screw (M5×P0.8 L=8)		2	2	
B-15	GP-020373,00		Timing Pulley For Upper Shaft		1	1	
B-16	08037SC-4517		Screw (M6xP1, L=8, L=10,		2	2	
B-17	BE-000077,00		Timing Belt		1	1	
B-18	02-016A-106L		Upper Shaft Baearing (R) [6304ZZC	後	1	1	
B-19	GP-015978,00		Bearing Bushing For Upper Shaft B	後	1	1	
B-20	SC-0317-2700		Screw (15/64" n=28)	後	2	2	
B-21	GP-015991,01		Pulley		1	1	
B-22	SC-0150-4122		Screw (15/64" n=28)		2	2	
B-23	02-019R-9570		Pulley Cover		1	1	
B-24	02-020S-9570		Screw (M6×P1.0)		1	1	
B-25	SSKM-0000004		Synchronizer	( )	1	1	
B-26	SC-0202-5050		Screw (3/16" n=28)	( )	2	2	
B-27	11-020A-2500		Magnetic Holder		2	2	
B-28	11-022W-2500		Washer For Magnetic Holder		2	2	
B-29	11-021S-2500		Screw (M5×P0.8)		2	2	
B-30	AS-006093,00		Thread Take Up Lever Ass'y	(組)	1set	1set	
B-31	GP-020377,00		Thread Take Up Lever		1	1	
B-32	BR-000155,00		Bearing (B) (Φ8 X Φ22 X 10.3t)	(大) (Φ8 X Φ22 X 10	1	1	
B-33	60-022A-4532		Bearing (S)	(小)	1	1	
B-34	GP-021988,00		Eyelet For Thread Take Up Lever		1	1	
B-35	GP-020376,02		Thread Take Up Lever Crank		1	1	
B-36	BR-000156,00		Bearing For Thread Take Up Lever	(Φ7 X Φ10 X	2	2	
B-37	GP-021148,00		Washer For Hinge Pin	가	2	2	
B-38	08-008S-106L		Stud Screw		1	1	
B-39	08-009W-106L		Washer		2	2	
B-40	11-017C-7507		Nut		1	1	
B-41	PN-000296,01		Hinge Pin For Thread Take Up Lev		1	1	
B-42	05008MC-4517		Screw (M5×P0.8 L=8)		1	1	
B-43	GP-018952,00		Bushing For Hinge Pin		1	1	
B-44	05008MC-4517		Screw (M5×P0.8 L=8)		1	1	
B-45	04-001A-106L		Needle Bar (One Needle)	(1 )	1		
B-46	GP-000195,00		Needle Bar (Two Needle)	(2 )		1	
B-47	GP-028792,00		Needle Holder		1		
B-48	SC-0536-7500		Screw(3/32" n=56)		1		
B-49	SC-000271,00		Screw(9/64" n=40)		1		
B-50	GP-025559,00		Needle (DP×35 #19)	(DP×35 #19)	1	2	
B-51	03071SC-4113		Screw			1	
B-52	GP-019023,01		Needle Bar Holder		1	1	
B-53	SC-000845,00		Screw[M4xP0.7 L=10]	"A"	2	2	

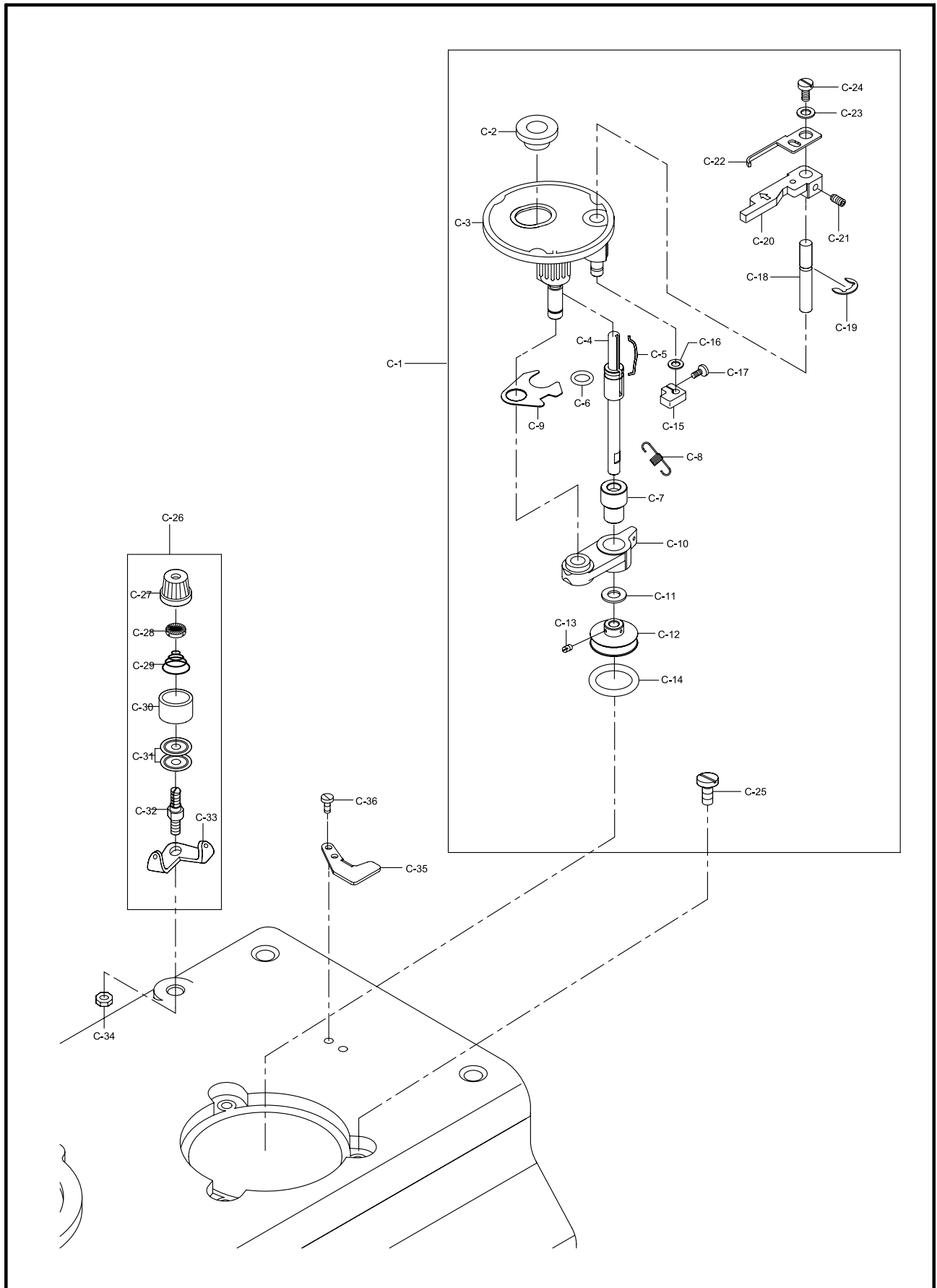


Ref. No.	Parts No.	note.	Name of Parts	品名	Q' ty		Assembly No.
					1080	1082	
B-54	08007SC-4517		Screw[M3,L=5]	"B"	1	1	
B-55	GP-018956,00		Needle Bar Guide Block		1	1	
B-56	SC-000592,00		Block Screw		1	1	
B-57	GP-020375,01		Needle Bar Crank Rod		1	1	
B-58	BR-000155,00		Bearing For Needle Bar Crank Rod	(Φ8 X Φ	1	1	
B-59	GP-021569,00		Bushing For Needle Bar Crank Rod		2	2	
B-60	GP-020374,01		Needle Bar Crank Shaft		1	1	
B-61	AS-005335,00		Belt Tensioner	(組)	1set	1set	
B-62	GP-018957,01		Belt Tensioner Body		1	1	
B-63	PN-000295,00		Belt Tensioner Pin		1	1	
B-64	GP-021461,00		Belt Tensioner Bearing Bushing		1	1	
B-65	GP-021462,00		Belt Tensioner Bearing(688zz)		2	2	
B-66	WS-000212,00		Washer		1	1	
B-67	06-003C-7400		E-ring [φ]	E-Ring	1	1	
B-68	14044SC-4517		Screw		1	1	



## Thread Winder Mechanism

### 실감기 관계





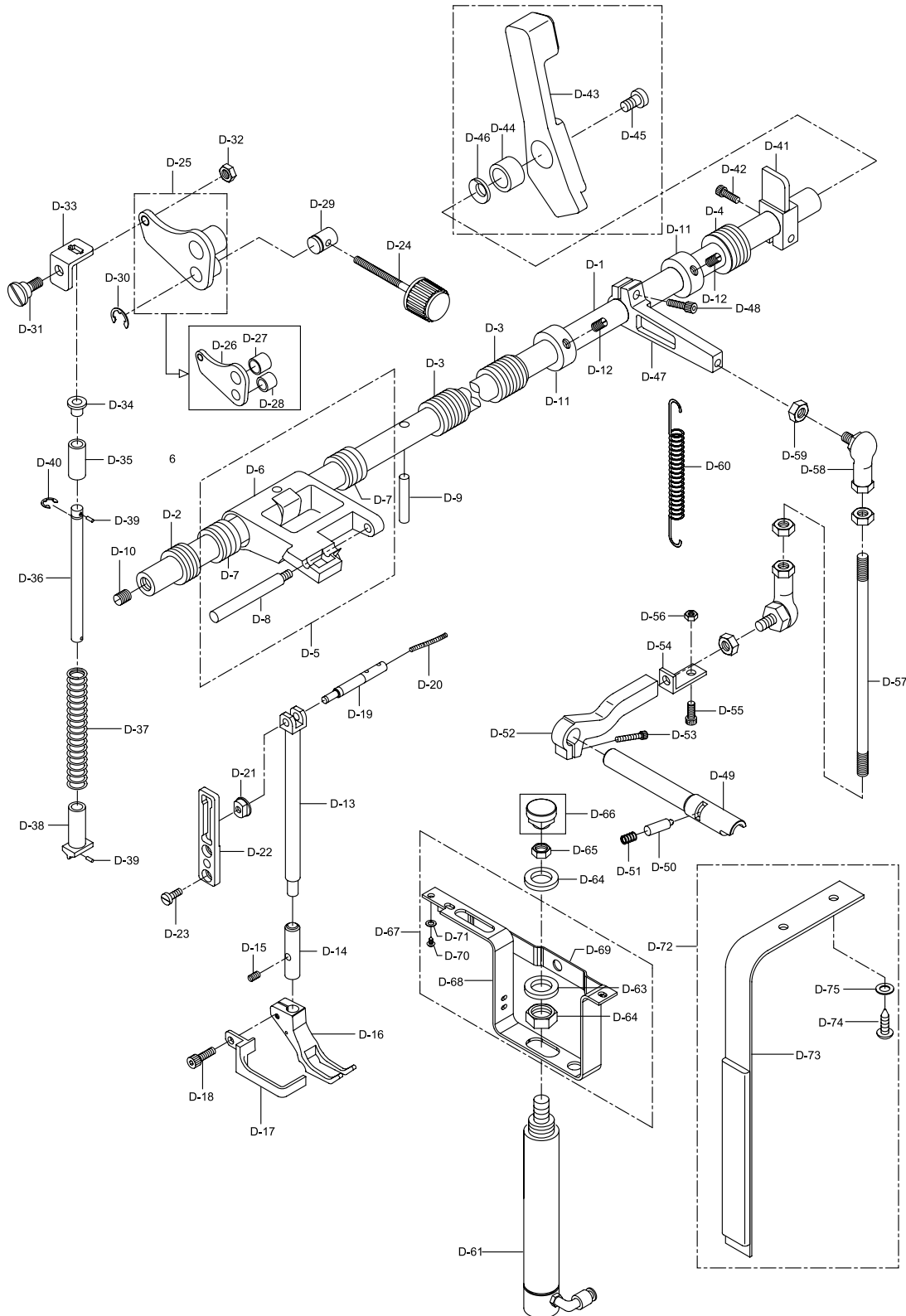


Ref. No.	Parts No.	note.	Name of Parts	품 명	Q' ty		Assembly No.
					1080	1082	
C-1	AS-006094,00		Bobbin Winder Ass'y (set)	실감기 (set)	1set	1set	
C-2	41S024S-306H		Bobbin Stand	보빈 스탠드	1	1	
C-3	41S001S-306H		Bobbin Winder Base Ass'y (set)	실감기 베이스 (set)	1set	1set	
C-4	GP-000765,01		Bobbin Winder Driving Shaft	실감기 구동축	1	1	
C-5	41-009A-300G		Bobbin Stopper	보빈 스토퍼	1	1	
C-6	41S009S-306H		Bobbin Winder Shaft Rubber Ring	실감기 구동축 고무링	1	1	
C-7	GP-004579-00		Bobbin Winder Action Body Bushing	실감기 작동체 붓싱	1	1	
C-8	41S021S-306H		Thread Winder Spring	실감기 인장 스프링	1	1	
C-9	41S017S-306H		Thread Winder Action Plate	실감기 작동판	1	1	
C-10	GP-000764,01		Bobbin Winder Action Body	실감기 작동체	1	1	
C-11	WS-000073-00		Washer	실감기 구동축 와셔	1	1	
C-12	41S006S-306H		Bobbin Winder Action Pulley	실감기 작동 폴리	1	1	
C-13	SC-0104-5607		Screw [11/16" n=40]	실감기 작동 폴리 고정나사	2	2	
C-14	41S008S-306H		Bobbin Winder Action Ring	실감기 작동 링	1	1	
C-15	41S014S-306H		Thread Winder Adjusting Cam	실감기 조절캠	1	1	
C-16	40-007W-1600		Washer	와셔	2	2	
C-17	02004SC-4113		Screw [M4×P0.7]	실감기 조절캠 침나사	1	1	
C-18	41S013S-306H		Bobbin Winder Lever Shaft	실감기 레버축	1	1	
C-19	04-009C-3710		E-ring [φ5]	실감기 레버축 E-링(φ5)	2	2	
C-20	41-013A-300G		Bobbin Winder Lever	실감기 레버	1	1	
C-21	SC-0105-7500		Screw [M4×P0.7]	실감기 레버 고정나사	1	1	
C-22	41-010A-300G		Bobbin Winder Adjusting Plate	실감기 조정판	1	1	
C-23	06011SW-306H		Washer	와셔	1	1	
C-24	SC-0130-1230		Screw [1/8" n=40]	실감기 조정판 침나사	1	1	
C-25	41S023S-306H		Screw [11/16" n=40]	실감기 작동판 침나사	3	3	
C-26	AS-000581-00		Thread Tension Control Ass'y (set)	실감기 실장력 조절장치 (set)	1set	1set	
C-27	41S034S-306H		Thread Tension Control Cap Nut	실장력 조절 캡 너트	1	1	
C-28	40-804W-1230		Thread Tension Control Spring Stopper	실장력 조절 스프링 스토퍼	1	1	
C-29	40-333G-3710		Thread Tension Control Spring	실장력 조절 스프링	1	1	
C-30	40-024A-1230		Spring Cover	스프링 커버	1	1	
C-31	40-108A-1306		Thread Tension Disk	실안내 접시	1	1	
C-32	41S028S-306H		Thread Tension Adjusting Shaft	실장력 조절축	1	1	
C-33	41S026S-306H		Thread Guide Plate	실안내판	1	1	
C-34	SN-0121-7400		Nut	너트	1	1	
C-35	41S025S-306H		Bobbin Winder Mes	실감기 메스	1	1	
C-36	SC-0519-2302		Screw [9/64" n=40]	실감기 메스 침나사	2	2	

# D

## Presser Foot & Knee Lifting Mechanism

### 노루발 및 무릎올림 관계



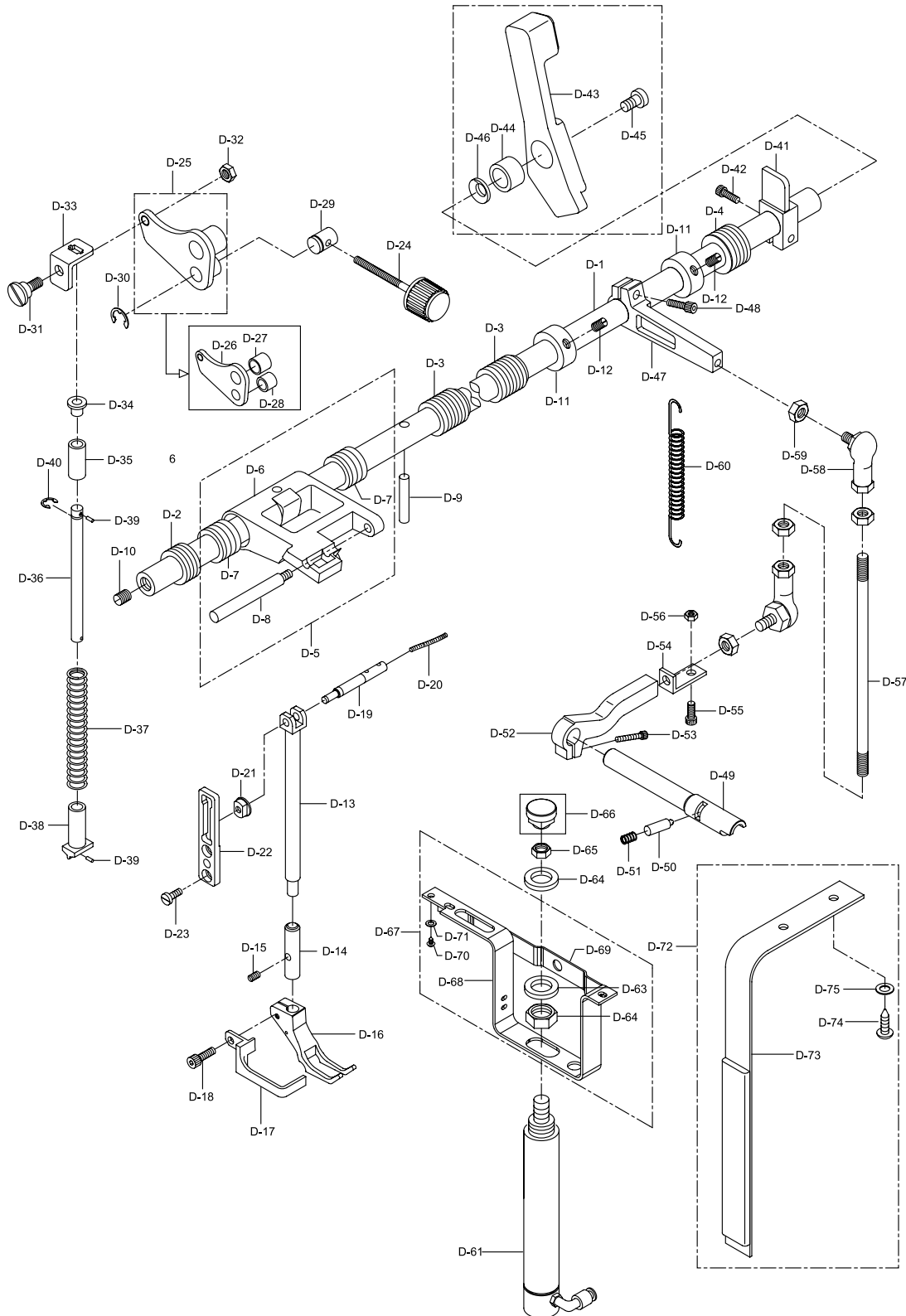


Ref. No.	Parts No.	note.	Name of Parts		Q' ty		Assembly No.
					1080	1082	
D-1	GP-019025,00		Presser Foot Lifting Shaft		1	1	
D-2	GP-016021,00		Bushing For Presser Foot Lifting Shaft (F)		1	1	
D-3	GP-016020,00		Bushing For Presser Foot Lifting Shaft (M)		2	2	
D-4	GP-016022,00		Bushing For Presser Foot Lifting Shaft (R)		1	1	
D-5	AS-005231,00		Bracket For Presser Foot Lifting Ass'y	(組)	1set	1set	
D-6	GP-020818,01		Bracket For Presser Foot Lifting		1	1	
D-7	GP-020817,00		Bushing For Bracket		2	2	
D-8	PN-000304,01		Bracket Pin For Presser Foot Lifting		1	1	
D-9	05-015P-106L		Pin For Bracket		1	1	
D-10	14044SC-4517		Screw		1	1	
D-11	07S122S-306H		Collar For Presser Foot Lifting Shaft		2	2	
D-12	SC-A308-4517		Screw (1/4 n=40)		2	2	
D-13	GP-019011,01		Sub Presser Bar		1	1	
D-14	GP-016752,01		Bushing For Sub Presser Bar		1	1	
D-15	SC-0103-5607		Screw		1	1	
D-16	GP-029106,00		Sub Presser		1		
D-17	06-130C-106L		Finger Guard	가	1		
D-18	07016SC-4113		Screw		1	1	
D-19	PN-000300,01		Presser Foot Guide Block Pin		1	1	
D-20	44-0000-1230		Oil Wick		1	1	
D-21	GP-018969,01		Presser Foot Guide Block		1	1	
D-22	GP-018955,01		Guide Plate	가	1	1	
D-23	14014SC-4113		Screw	가	2	2	
D-24	GP-016124,00		Dial For Pressure Adjusting Ass'y	(組)	1set	1set	
D-25	AS-005248,00		Pressure Bar Adjusting Bracket Ass'y	(組)	1set	1set	
D-26	GP-018979,01		Pressure Bar Adjusting Bracket		1	1	
D-27	GP-019036,00		Bushing (B)	(大)	1	1	
D-28	GP-019037,00		Bushing (S)	(小)	1	1	
D-29	GP-019981,00		Pin For Pressure Bar Adjusting Bracket		1	1	
D-30	06-003C-7400		E-Ring [ 9]	E -	1	1	
D-31	05-011S-106L		Pressure Bar Adjusting Bracket		1	1	
D-32	05-012C-106L		Pressure Bar Adjusting Bracket		1	1	
D-33	GP-018958,00		Spring Support (U) For Pressure Bar	(上)	1	1	
D-34	05-034A-106L		Guide Bushing	가	1	1	
D-35	44S002S-306H		Guide Hose	가	1	1	
D-36	05-033A-106L		Guide Shaft	가	1	1	
D-37	GP-024044,00		Presser Bar Spring		1	1	
D-38	05-036A-106L		Spring Support For Pressure Bar		1	1	
D-39	05-037P-106L		Spring Pin [ 3]	가	2	2	
D-40	04-009C-3710		E-Ring [ 5]	가 E -	2	2	
D-41	GP-018965,00		Block For Press Bar Lifting		1	1	
D-42	08091SC-4113		Screw		1	1	
D-43	AS-006079,01		Lever For Press Bar Lifting(set)	(組)	1	1	
D-44	GP-025512,00		Bushing For Press Bar Lifting Lever		1	1	
D-45	GP-020616,00		Screw		1	1	
D-46	GP-025463,00		Bend Washer		1	1	
D-47	GP-019603,00		Crank For Presser Foot Lifting		1	1	
D-48	14002SC-4113		Screw [M6×P1.0, L=15]		1	1	
D-49	GP-019542,00		Knee Lifting Shaft		1	1	
D-50	PN-000306,00		Pin For Knee Lifting Shaft		1	1	
D-51	GP-020900,00		Spring		1	1	
D-52	GP-019625,01		Lever For Knee Lifting Shaft		1	1	
D-53	14002SC-4113		Screw [M6×P1.0, L=15]		1	1	
D-54	GP-019994,00		Bracket For Rod		1	1	
D-55	15028SC-1111		Knee Lifting Adjusting Screw		1	1	
D-56	SN-0102-4000		Nut		1	1	
D-57	GP-020203,00		Connecting Rod For Knee Lifting Shaft		1	1	

# D

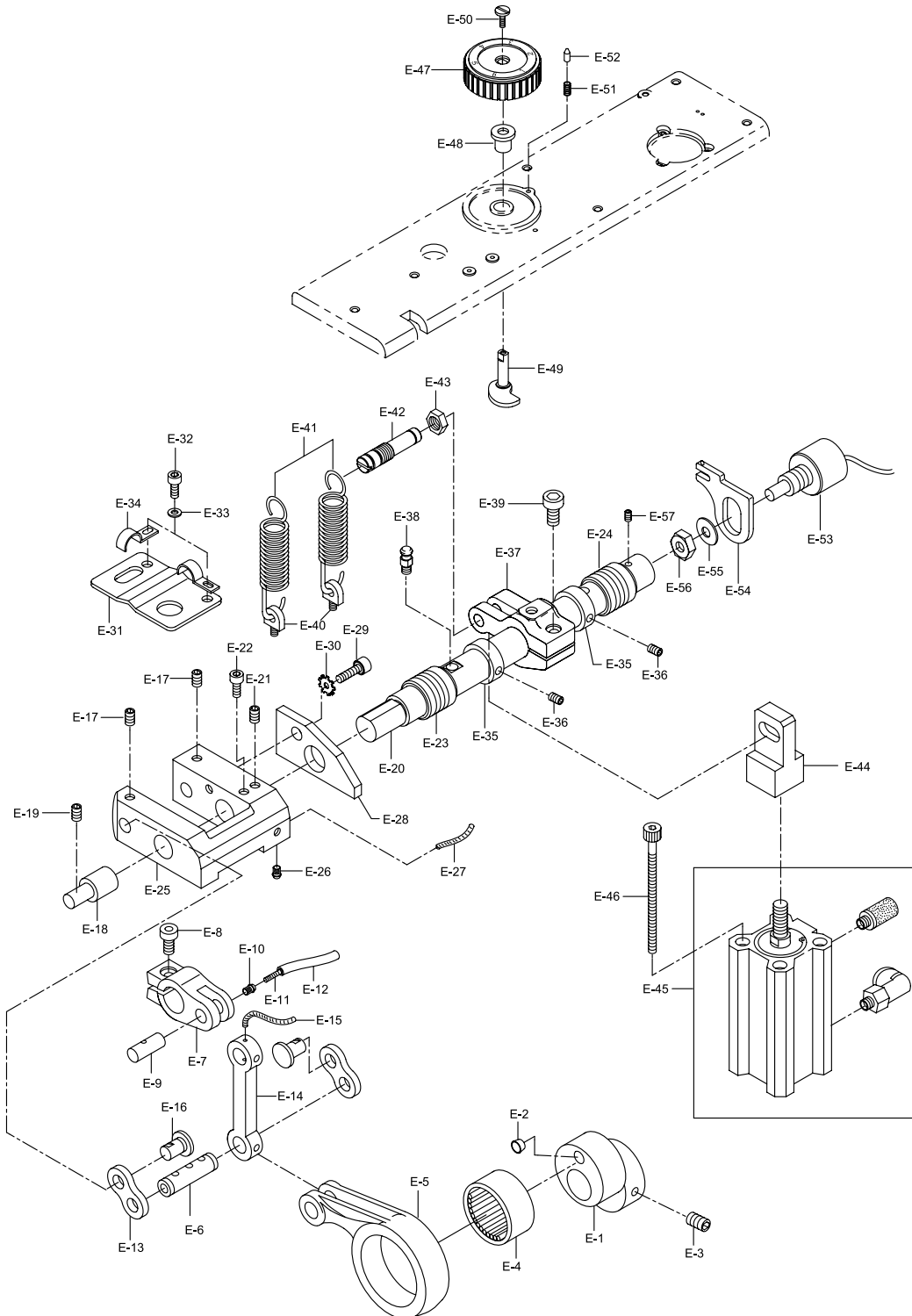
## Presser Foot & Knee Lifting Mechanism

### 노루발 및 무릎올림 관계





Ref. No.	Parts No.	note.	Name of Parts		Q' ty		Assembly No.
					1080	1082	
D-58	GP-024811,00		Joint		2	2	
D-59	SN-0102-4000		Nut		4	4	
D-60	GP-020895,00		Return Spring For Knee Shaft		1	1	
D-61	AS-005504,00		Presser Bar Lifting Cylinder Ass'y	(組)	1set	1set	
D-62			Nut		2	2	
D-63	GP-020819,00		Sponge Washer	( )	1	1	
D-64	GP-020820,00		Plastics Washer		1	1	
D-65			Nut		1	1	
D-66	GP-020821,01		Connector For Cylinder		1	1	
D-67	AS-005262,01		Bracket For Cylinder	(組)	1	1	
D-68	GP-020978,00		Bracket For Cylinder	"A"	1	1	
D-69	GP-020979,00		Bracket For Cylinder	"B"	1	1	
D-70	91-001S-1067		Screw ( )		3	3	
D-71	02-105W-1230		Washer		3	3	
D-72	EA-000090,00		Switch For Knee Lifting Ass'y	(組)	1set	1set	
D-73	GP-016728,02		Switch Bracket For Knee Lifting		1	1	
D-74	91-001S-1067		Screw		2	2	
D-75	02-105W-1230		Washer		2	2	





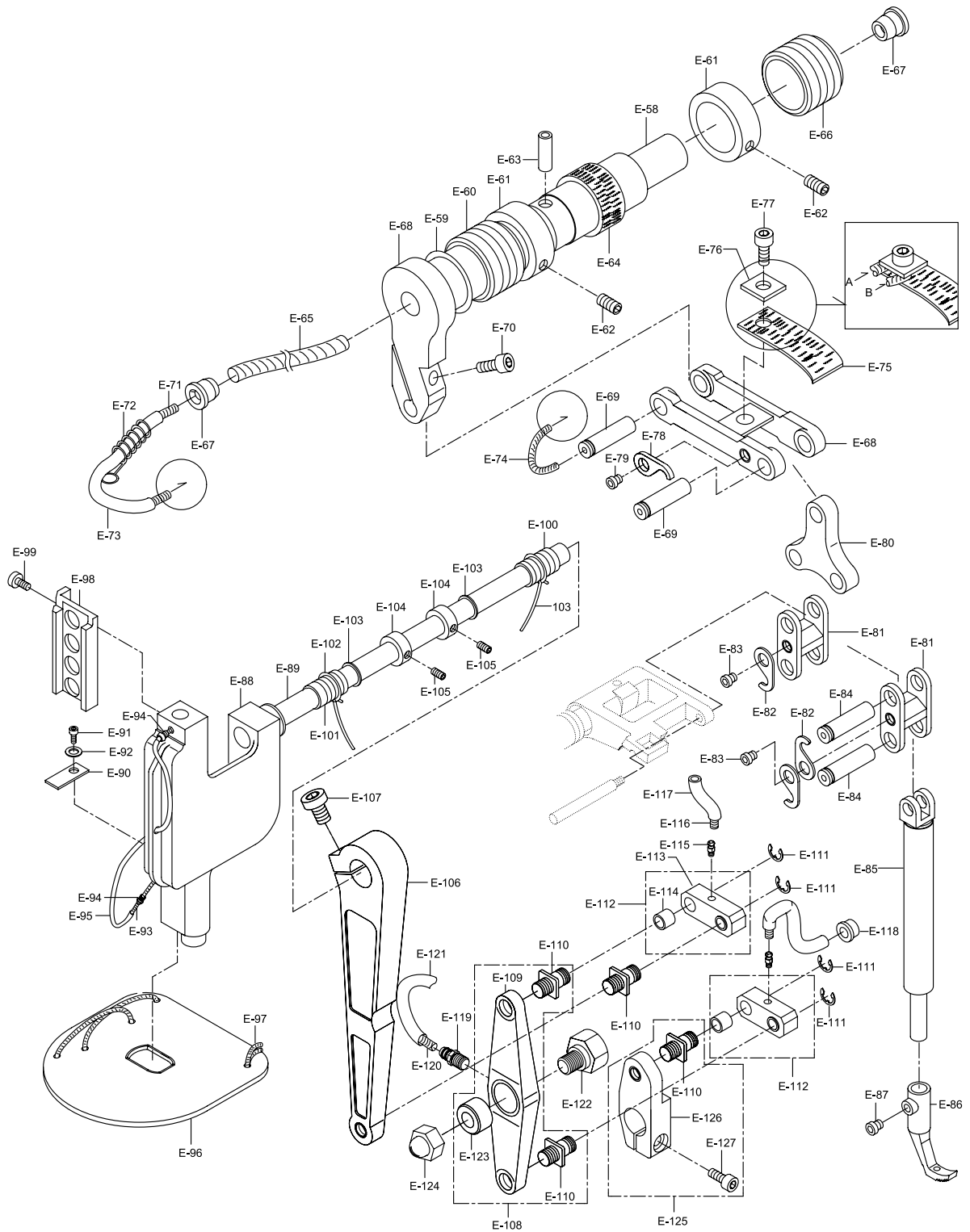
Ref. No.	Parts No.	note.	Name of Parts	品 名	Q'ty		Assembly No.
					1080	1082	
E-1	GP-019863,00		Presser Foot Driving Cam		1	1	
E-2	GP-021146,00		Plug for Presser Foot Driving Cam		1	1	
E-3	14060SC-4517		Screw		2	2	
E-4	15-003A-106L		Nedde Bearing For Presser Foot Driving Cam		1	1	
E-5	GP-019014,00		Connecting Rod For Upper Feed		1	1	
E-6	GP-019802,00		Link Pin For Upper Feed		1	1	
E-7	GP-019672,01		Connecting Rod Crank For Upper Feed		1	1	
E-8	08034SC-A001		Screw		1	1	
E-9	PN-000310,00		Crank Pin		1	1	
E-10	GP-020891,02		Nipple For Crank Pin		1	1	
E-11	44-0000-1230		Oil Wick For Crank Pin		1	1	
E-12	44-001C-5700		Oil Hose For Crank Pin		1	1	
E-13	GP-018953,00		Connection Link "A" For Climb Shaft	"A"	2	2	
E-14	GP-018967,00		Connection Link "B" For Climb Shaft	"B"	1	1	
E-15	GP-001861,00		Connection Link "B" For Climb Shaft	"B"	1	1	
E-16	GP-019801,00		Pin For Connection Link	"A"	2	2	
E-17	05008MC-4517		Screw (M5×P0.8, L=8)	"A"	2	2	
E-18	15-014A-106L		Climb Device Shaft "A"	"A"	1	1	
E-19	05008MC-4517		Screw (M5×P0.8, L=8)	"A"	2	2	
E-20	GP-019975,00		Climb Device Shaft "B"	"B"	1	1	
E-21	05008MC-4517		Screw (M5×P0.8, L=8)	"B"	2	2	
E-22	10-020S-300G		Screw (M5×P0.8, L=10)	"B"	2	2	
E-23	GP-016019,00		Bushing For Climb Device Shaft (F)	(前)	1	1	
E-24	GP-016017,00		Bushing For Climb Device Shaft (R)	(後)	1	1	
E-25	GP-019673,00		Climb Device Body		1	1	
E-26	GP-020891,02		Nipple For Climb Device Body		1	1	
E-27	44-0000-1230		Oil Wick For Climb Device Body		1	1	
E-28	GP-019803,01		Stopper "A" For Climb Device Body	"A"	1	1	
E-29	15-028S-106L		Screw (M5×P0.8)	"A"	1	1	
E-30	05-089W-967B		Washer	"A"	1	1	
E-31	GP-016094,00		Stopper "B" For Climb Device Body	"B"	1	1	
E-32	SC-0211-7500		Screw (M4×P0.7)	"B"	2	2	
E-33	44-011W-1600		Washer	"B"	2	2	
E-34	GP-016381,00		Cable Holder	( )	2	2	
E-35	CL-000116,00		Collar For Climb Device Shaft		2	2	
E-36	04014SC-4517		Screw		2	2	
E-37	GP-029142,00		Crank For Climb Device		1	1	
E-38	PN-000335,01		Crank Pin		1	1	
E-39	08091SC-4113		Screw		1	1	
E-40	06-016C-380L		Spring Holder		2	2	
E-41	15-035G-106L		Return Spring For Climb Device Shaft		2	2	
E-42	GP-021322,00		Spring Hook		1	1	
E-43	15-038C-106L		Nut		1	1	
E-44	15-045A-106L		Nuckle For Cylinder		1	1	
E-45	15-044A-106L		Cylinder For Climb Device Shaft Ass'y	(組)	1set	1set	
E-46	15-047S-106L		Screw (M3×P0.5)		2	2	
E-47	GP-021289,00		Adjusting Dial "A" For Presser Foot Lifting Cam	"A"	1	1	
E-48	01-019C-106L		Bushing For Top Cover	"A"	1	1	
E-49	15-039A-106L		Presser Foot Lifting Cam	"A"	1	1	
E-50	SC-0316-2350		Screw (11/64" n=40)		1	1	
E-51	15-042G-106L		Spring For Stopper Pin		1	1	
E-52	15-041P-106L		Stopper Pin		1	1	
E-53	CA-002398,01		Potentiometer	(組)	1set	1set	
E-54	GP-020877,00		Bracket For Potentiometer		1	1	
E-55	15-053W-106L		Washer		1	1	
E-56	15-052C-106L		Nut		1	1	
E-57	03022SC-4517		Screw		1	1	
E-58	GP-019570,02		Upper Feed Driving Shaft		1	1	
E-59	08067RB-A001		O-ring For Upper Feed Driving Shaft	O-ring ( P10A)	1	1	
E-60	GP-020263,00		Bushing For Upper Feed Driving Shaft (F)	(前)	1	1	
E-61	CL-000116,00		Collar For Upper Feed Driving Shaft		2	2	
E-62	04014SC-4517		Screw ( )		2	2	
E-63	PN-000305,00		Fixed Pin For Oil Wick		1	1	





## Upper Feed Mechanism

### 상피드 관계



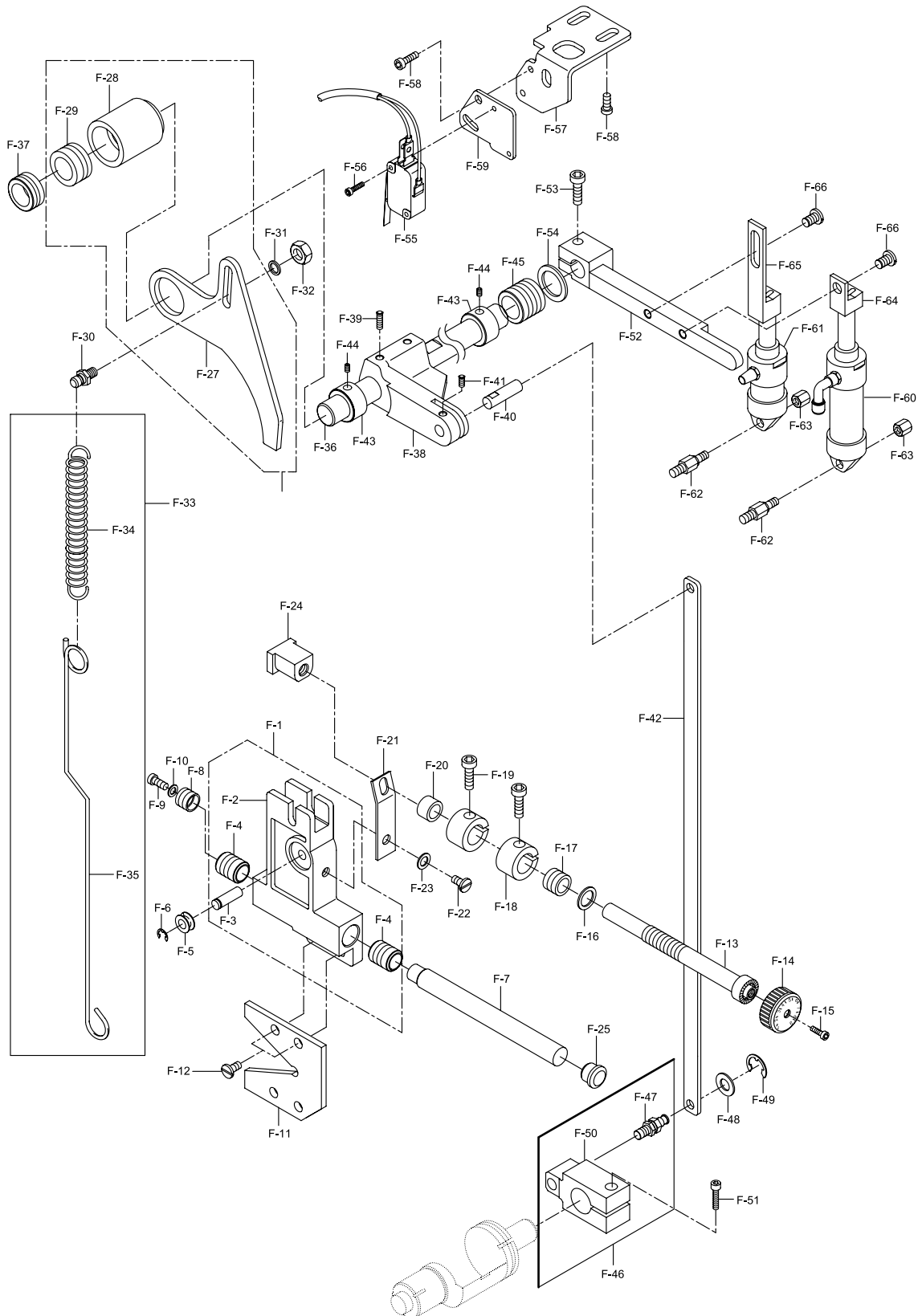


Ref. No.	Parts No.	note.	Name of Parts	품 명	Q' ty		Assembly No.
					1080	1082	
E-64	GP-020934,00		Felt For Upper Feed Driving Shaft		1	1	
E-65	44-0001-1230		Oil Wick "B" For Upper Feed Driving Shaft	"B"	1	1	
E-66	GP-020264,00		Bushing For Upper Feed Driving Shaft (R)	(後)	1	1	
E-67	GP-021199,00		Plug For Upper Feed Driving Shaft		2	2	
E-68	GP-018968,01		Connecting Link For Upper Feed		1	1	
E-69	PN-000298,01		Connecting Link Pin For Upper Feed		2	2	
E-70	7016SC-4113		Pin For Upper Feed Driving Shaft		1	1	
E-71	44-0000-1230		Pin Oil Wick For Upper Feed Driving Shaft		1	1	
E-72	GP-021319,00		Guide Spring For Oil Supply Hose	가	1	1	
E-73	44-001C-5700		Oil Supply Hose For Connecting Link		1	1	
E-74	44-0000-1230		Oil Supply Wick For Connecting Link		1	1	
E-75	GP-021187,00		Oil Supply Wick For Connecting Link		1	1	
E-76	GP-021189,00		Washer		1	1	
E-77	15067AF-A001		Screw (1/8" n=40)		1	1	
E-78	GP-019671,01		Pin Holder		1	1	
E-79	SC-000672,01		Screw (M4×P0.7, L=3.5)		1	1	
E-80	GP-018954,01		Triangular Link For Presser		1	1	
E-81	GP-018964,01		Connecting Rod For Triangular Link		2	2	
E-82	GP-019671,01		Pin Holder		3	3	
E-83	SC-000672,01		Screw (1/8" , n=40)		2	2	
E-84	PN-000298,01		Presser Bar Connecting Pin		2	2	
E-85	GP-019010,01		Walking Bar		1	1	
E-86	GP-028641,00		Upper Feed Presser Foot		1		
E-87	05-003S-106L		Screw (M4×P0.7)		1	1	
E-88	GP-020665,02		Needle Bar Frame		1	1	
E-89	GP-016278,00		Needle Bar Rock Shaft		1	1	
E-90	GP-024288,00		Felt For Needle Bar Frame		1	1	
E-91	09018SC-8118		Screw (M4×P0.7)		1	1	
E-92	02-011W-2302		Washer		1	1	
E-93	GP-028439,00		Nipple For Needle Bar Frame		2	2	
E-94	44-0000-1230		Oil Wick For Needle Bar Frame		1	1	
E-95	44-001C-5700		Hose For Needle Bar Frame		1	1	
E-96	GP-021315,00		Sealing Cover For Needle Bar Frame		1	1	
E-97	44-0000-1230		Oil Wick For Sealing Cover		1	1	
E-98	GP-020664,00		Block Guide For Needle Bar	가	1	1	
E-99	SC-0211-7500		Screw (M4×P0.7)	가	2	2	
E-100	GP-020270,00		Bushing For Needle Bar Rock Shaft (F)	(前)	1	1	
E-101	GP-016017,00		Bushing For Needle Bar Rock Shaft (R)	(後)	1	1	
E-102	44-0000-1230		Oil Wick For Needle Bar Rock Shaft		2	2	
E-103	WS-000205,00		Washer For Needle Bar Rock Shaft		2	2	
E-104	CL-000116,00		Collar For Needle Bar Rock Shaft		2	2	
E-105	04014SC-4517		Screw		2	2	
E-106	GP-020100,00		Connecting Rod For Needle Bar Rock Shaft		1	1	
E-107	08091SC-4113		Screw		1	1	
E-108	AS-005157,00		Transfer Lever Ass'y For Needle Bar Rock Shaft Link Ass'y	(組)	1set	1set	
E-109	GP-020095,01		Transfer Lever For Needle Bar Rock Shaft Link		1	1	
E-110	SC-000608,00		Connecting Rod Pin		4	4	
E-111	43-009C-1600		E-ring [ 9]	E-	4	4	
E-112	AS-005158,00		Needle Bar Rock Shaft Link Ass'y	(組)	2set	2set	
E-113	GP-020097,01		Needle Bar Rock Shaft Link		2	2	
E-114	GP-020098,00		Bushing For Needle Bar Rock Shaft Link		4	4	
E-115	GP-020891,02		Nipple For Needle Bar Rock Shaft Link		2	2	
E-116	44-0000-1230		Oil Wick For Needle Bar Rock Shaft Link		2	2	
E-117	44-001C-5700		Hose For Needle Bar Rock Shaft Link		2	2	
E-118	GP-020894,00		Rubber For Hose		1	1	
E-119	GP-020891,02		Nipple For Transfer Lever		1	1	
E-120	44-0000-1230		Oil Wick For Transfer Lever		1	1	
E-121	44-001C-5700		Hose For Transfer Lever		1	1	
E-122	GP-020871,01		Stud Screw For Transfer Lever		1	1	
E-123	GP-020096,00		Bushing For Transfer Lever		1	1	
E-124	SN-000127,00		Cap Nut		1	1	
E-125	AS-005159,00		Needle Bar Rock Shaft Crank Ass'y	(組)	1set	1set	
E-126	GP-020099,00		Needle Bar Rock Shaft Crank		1	1	
E-127	14002SC-4113		Screw [M6×P1.0, L=15]		1	1	

# F

## Feed Mechanism

### 피드 관계



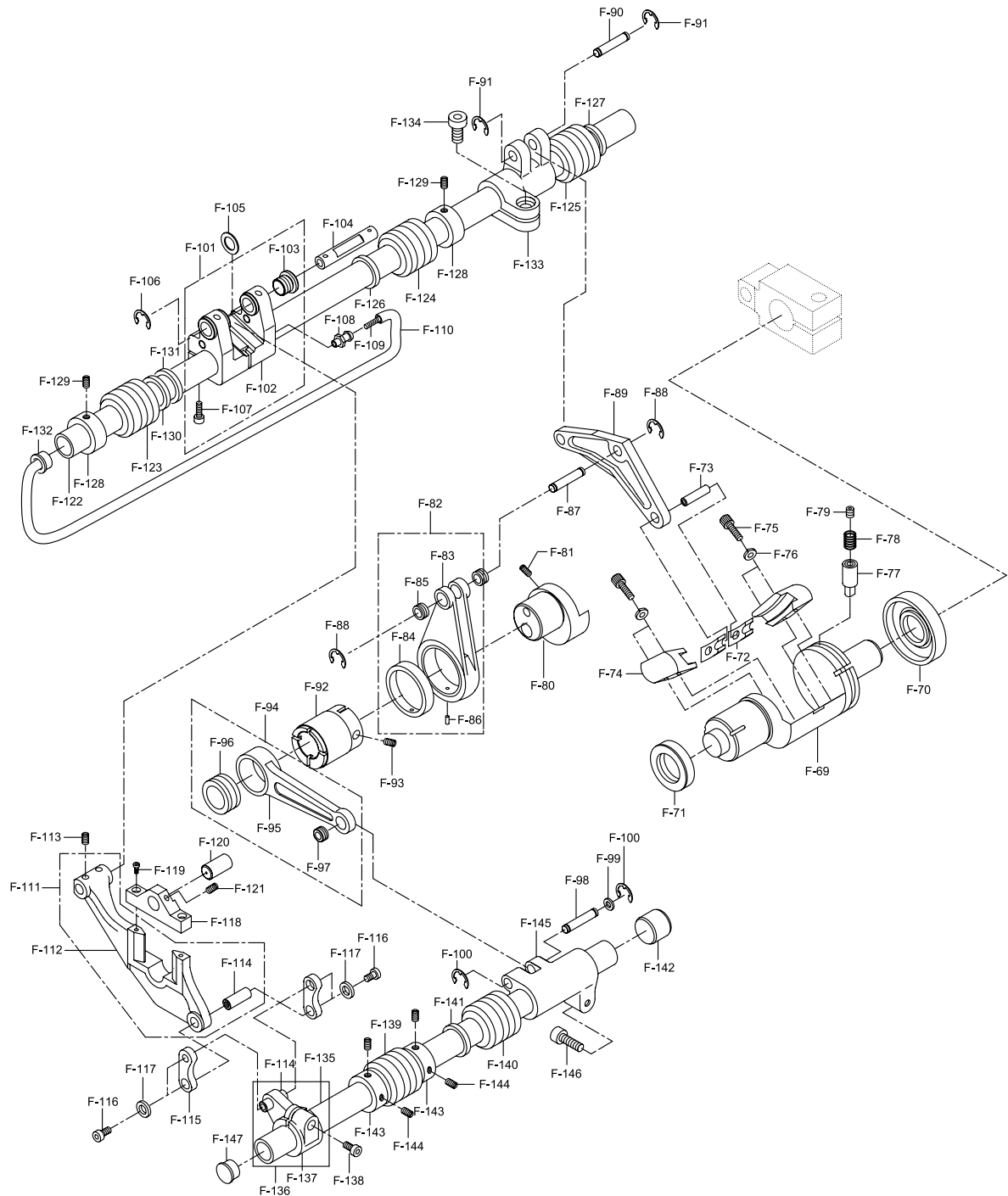


Ref. No.	Parts No.	note.	Name of Parts	備 考	Q'ty		Assembly No.
					1080	1082	
F-1	AS-005173.00		Feed Regulator Body Ass'y	(組)	1set	1set	
F-2	GP-020090.00		Feed Regulator Body		1	1	
F-3	PN-000314.00		Feed Regulator Body Pin		1	1	
F-4	GP-020091.00		Feed Regulator Body Bushing		2	2	
F-5	GP-020092.00		Feed Regulator Body Roller		1	1	
F-6	05-014C-1230		E-Ring [ 4]	E-ring	1	1	
F-7	GP-021318.00		Feed Regulator Slide Shaft		1	1	
F-8	GP-016169.00		Bushing For Feed Regulator Slide Shaft		1	1	
F-9	02004SC-4113		Screw (M4 x L8)		1	1	
F-10	18014SW-3115		Washer[ 4]		1	1	
F-11	GP-020094.00		Feed Regulator		1	1	
F-12	14014SC-4113		Screw (M5 x L8)		2	2	
F-13	GP-020089.00		Feed Adjusting Dial Shaft		1	1	
F-14	GP-022116.00		Feed Regulator Dial		1	1	
F-15	SC-0193-1230		Screw (3/16" n=28)		1	1	
F-16	08041SW-1111		Washer [ 8]		1	1	
F-17	GP-016168.00		Bushing For Feed Adjusting Dial Shaft		1	1	
F-18	10S114S-306H		Collar For Feed Adjusting Dial Shaft		2	2	
F-19	07016SC-4113		Screw (M4 X P0.7 , L=12)		2	2	
F-20	GP-021316.01		Feed Regulator Stopper	( 12MM )	1	1	
F-21	GP-020093.00		Feed Regulator Nut Spring Hook		1	1	
F-22	18033SC-3123		Screw (M5 x L5)		1	1	
F-23	01A116S-811H		Washer [ 5]		1	1	
F-24	SN-000100.00		Feed Regulator Nut		1	1	
F-25	46-006R-207P		Plug For Feed Regulator Slide Shaft		1	1	
F-26	AS-005235.00		Limit Switch Plate Ass'y	(組)	1set	1set	
F-27	GP-020843.00		Limit Switch Plate		1	1	
F-28	GP-020844.00		Bushing For Limit Switch Plate (B)	(大)	1	1	
F-29	GP-020817.00		Bushing For Limit Switch Plate (S)	(小)	2	2	
F-30	GP-020595.00		Spring Holder For Limit Switch Sensor Plate		1	1	
F-31	18014SW-3115		Spring Holder Washer For Limit Switch Sensor Plate [ 4]		1	1	
F-32	02029SN-9311		Spring Holder Nut For Limit Switch Sensor Plate (M4)		1	1	
F-33	AS-005249.00		Spring Ass'Y For Feed Regulator Connecting Crank	(組)	1set	1set	
F-34	GP-020904.00		Spring For Feed Regulator Connecting Crank		1	1	
F-35	GP-020905.00		Wire For Feed Regulator Connecting Crank		1	1	
F-36	GP-021317.00		Reverse Feed Lever Shaft		1	1	
F-37	GP-026003.00		Bushing For Reverse Feed Lever Shaft (F)	(前)	1	1	
F-38	GP-020087.01		Feed Regulator Lever		1	1	
F-39	05008MC-4517		Screw (M6xL12)		2	2	
F-40	PN-000337.00		Pin For Feed Regulator Lever		1	1	
F-41	03022SC-4517		Screw (M4xL5)		1	1	
F-42	GP-020088.00		Feed Regulator Connecting Rod		1	1	
F-43	07S022S-306H		Collar For Reverse Feed Lever Shaft		2	2	
F-44	04016AF-A001		Screw (1/4", N=40, L=5)		2	2	
F-45	GP-021699.00		Bushing For Reverse Feed Lever Shaft (R)	(後)	1	1	
F-46	AS-005388.00		Feed Regulator Connecting Crank Ass'y	(組)	1set	1set	
F-47	GP-021987.01		Spring Holder For Feed Regulator Connecting Crank		1	1	
F-48	SW-0107-9011		Washer		1	1	
F-49	05-014C-1230		E-Ring [ 6]	E-	1	1	
F-50	GP-020086.00		Feed Regulator Connecting Crank		1	1	
F-51	15028SC-1111		Screw (M6xL20)		1	1	
F-52	GP-020512.00		Reverse Feed Lever				
F-53	14002SC-4113		Screw [M6×P1.0, L=15]		1	1	
F-54	GP-020513.00		Bushing For Reverse Feed Lever		1	1	
F-55	CA-002399.01		Limite Switch For Speed Schange		1	1	
F-56	09007SC-4113		Screw (M3xL15)		2	2	
F-57	GP-030521.00		Bracket For Limite Switch		1	1	
F-58	08076SC-4113		Screw (M4xL10)		2	2	
F-59	GP-030520.00		Bracket For Limite Switch		1	1	
F-60	AS-005514.00		Cylinder For Reverse Feed	(組)	1set	1set	
F-61	AS-005515.00		Cylinder For Feed Adjusting	(組)	1set	1set	
F-62	GP-021090.00		Hinge For Pneumatic Cylinder		2	2	
F-63	SN-000101.00		Hinge Nut For Pneumatic Cylinder		2	2	
F-64	GP-021089.00		Cylinder Rod For Reverse Feed		1	1	
F-65	GP-021088.00		Cylinder For Feed Adjusting		1	1	
F-66	SC-000631.00		Screw For Reverse Cylinder Rod		2	2	
F-67	GP-020118.00		Feed Regulator Shaft		1	1	
F-68	06-068R-106L		Oil Seal (Big)	(大)	1	1	
F-69	06-067R-106L		Oil Seal (Small)	(小)	1	1	
F-70	GP-020117.00		Block For Feed Regulator Shaft		2	2	
F-71	GP-020589.00		Block Pin		1	1	
F-72	GP-020116.00		Block Guide	가	2	2	
F-73	03016SC-4113		Screw	가	4	4	

# F

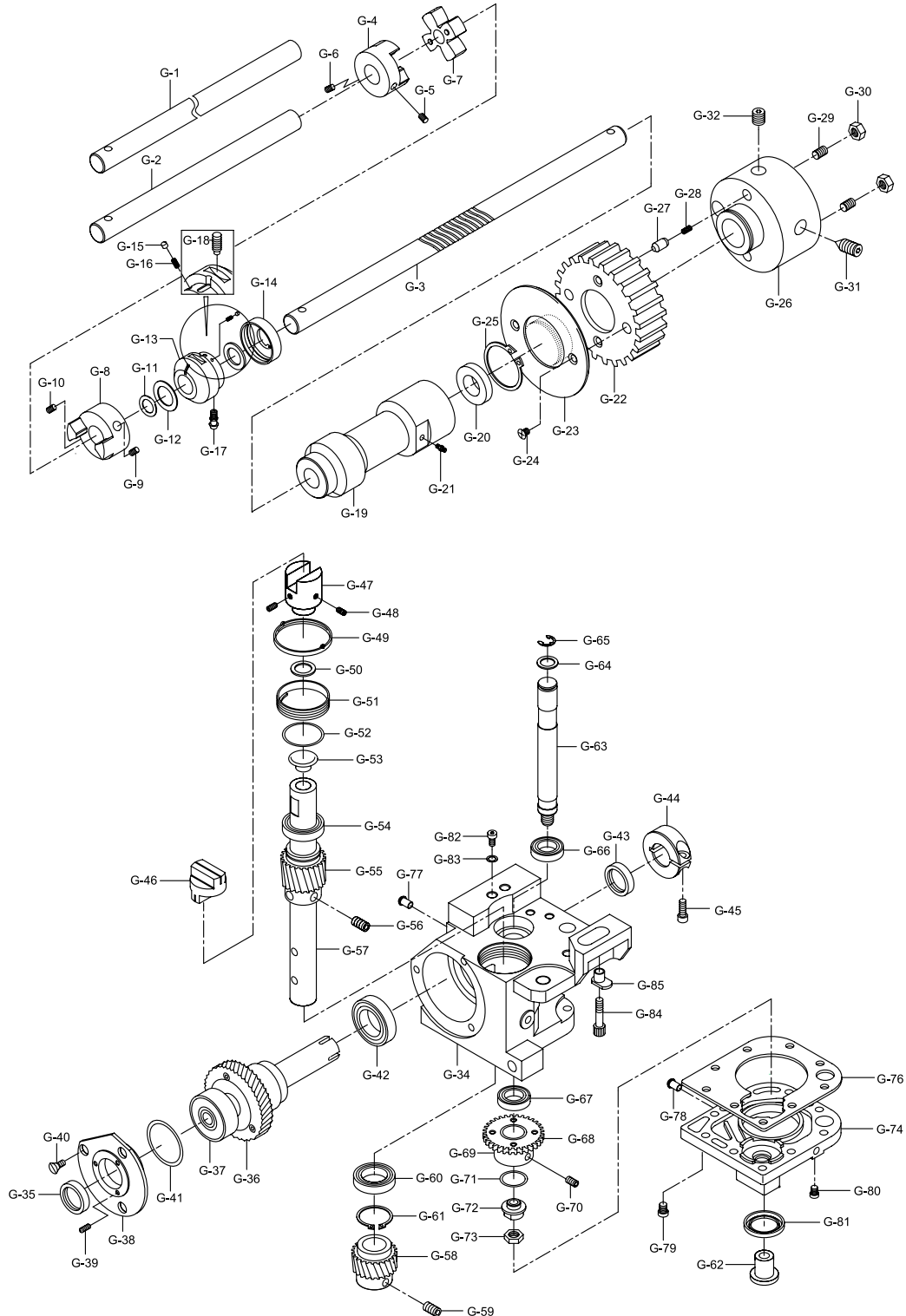
## Feed Mechanism

### 피드 관계





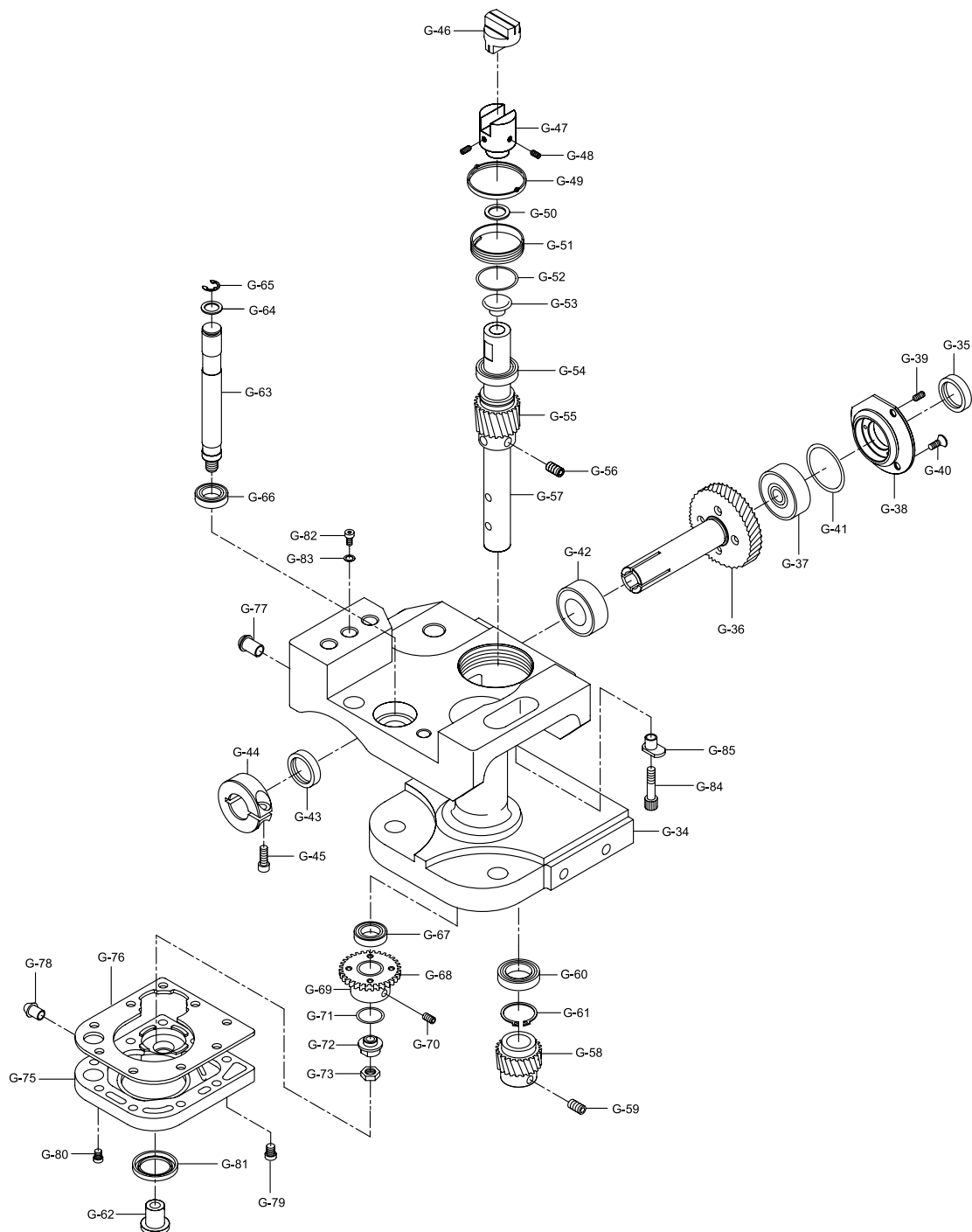
Ref. No.	Parts No.	note.	Name of Parts	部 品 名	Q'ty		Assembly No.
					1080	1082	
F-74	07-011W-1230		Spring Washer	가	4	4	
F-75	06-074P-106L		Guide Pin	가	1	1	
F-76	06-075G-106L		Guide Spring	가	1	1	
F-77	06-076S-106L		Screw (M10)	가	1	1	
F-78	GP-020109.00		Under Feed Cam		1	1	
F-79	08037AF-4517		Screw (M6xL8)		2	2	
F-80	AS-005386.00		Horizontal Feed Rod Ass'y	(組)	1set	1set	
F-81	GP-019655.00		Horizontal Feed Rod		1	1	
F-82	GP-019760.00		Bushing For Horizontal Feed Rod (Big)	(大)	1	1	
F-83	GP-020755.00		Bushing For Horizontal Feed Rod (Small)	(小)	2	2	
F-84	PN-000373.00		Fixed Pin Bushing [ 2x6]	(大)	1	1	
F-85	GP-020586.00		Pin For Horizontal Feed Rod		1	1	
F-86	04-009C-3710		E-Ring [ 5]	E -	2	2	
F-87	AS-006625.00		Feed Regulator Connecting Rod		1	1	
F-88	GP-020586.00		Pin For Feed Regulator Connecting Rod		1	1	
F-89	04-009C-3710		E-Ring [ 5]	E -	2	2	
F-90	GP-020105.00		Feed Rocker Shaft Cam		1	1	
F-91	06060MC-4517		Screw (M6xL5)		2	2	
F-92	AS-005160.00		Vertical Feed Rod Ass'y	(組)	1set	1set	
F-93	GP-020101.00		Vertical Feed Rod		1	1	
F-94	GP-020103.00		Vertical Feed Rod Bushing (B)	(大)	1	1	
F-95	GP-020755.00		Vertical Feed Rod Bushing (S)	(小)	1	1	
F-96	GP-020586.00		Pin For Connecting Rod		1	1	
F-97	WS-000220.00		Pin For Connecting Rod		1	1	
F-98	04-009C-3710		E-Ring [ 5]	E -	2	2	
F-99	AS-005162.00		Feed Bar Connecting Crank Ass'y	(組)	1set	1set	
F-100	GP-020106.02		Feed Bar Connecting Crank		1	1	
F-101	GP-020107.00		Bushing For Feed Bar Connecting Crank		4	1	
F-102	GP-020582.00		Pin For Feed Bar Connecting Crank		1	1	
F-103	WS-000220.00		Washer For Pin		1	1	
F-104	04-009C-3710		E-Ring [ 5]	E -	1	1	
F-105	SC-0162-5607		Screw (M5xL15)		2	1	
F-106	GP-030503.00		Oil Nipple For Feed Bar Connecting Crank		1	1	
F-107	44-0000-1230		Oil wick For Feed Bar Connecting Crank		1	1	
F-108	44-001C-5700		Oil Pipe For Feed Bar Connecting Crank		1	1	
F-109	AS-005174.00		Feed Dog Support Ass'y	(組)	1set	1set	
F-110	GP-020111.00		Feed Dog Support		1	1	
F-111	SC-000716.00		Screw		2	1	
F-112	PN-000316.00		Feed Base Pin		1	1	
F-113	GP-020200.00		Feed Bar Connecting Link		2	1	
F-114	07018SC-8118		Screw (M3xL10)		2	1	
F-115	WS-000218.00		Washer		2	1	
F-116	GP-020110.02		Feed Dog Connecting Rod Support		1	1	
F-117	04010MC-7113		Screw (M4xL10)		2	1	
F-118	PN-000287.00		Pin For Feed Dog Lever		1	1	
F-119	03022SC-4517		Screw (M4xL5)		1	1	
F-120	GP-020193.00		Feed Driving Shaft		1	1	
F-121	GP-016017.00		Bushing For Feed Driving Shaft (F)	前	1	1	
F-122	GP-021549.00		Bushing For Feed Driving Shaft (M)	中	1	1	
F-123	GP-021550.00		Bushing For Feed Driving Shaft (R)	後	1	1	
F-124	06-101R-106L		Oil Seal For Feed Driving Shaft (F)	(前)	1	1	
F-125	06-103R-106L		Oil Seal For Feed Driving Shaft (R)	(後)	1	1	
F-126	CL-000114.00		Collar For Feed Driving Shaft		1	1	
F-127	07016SC-4113		Screw		1	1	
F-128	06-034W-9570		Washer		1	1	
F-129	RI-000082.00		C-Ring	C -	1	1	
F-130	GP-020894.00		Feed Driving Shaft Cap		1	1	
F-131	06-106A-106L		Feed Driving Shaft Crank		1	1	
F-132	16059SC-4113		Screw (M6xL12)		1	1	
F-133	GP-020205.00		Feed Rocker Shaft		1	1	
F-134	AS-005161.01		Crank For Feed Rocker Shaft (F) Ass'y	(前) (組)	1set	1set	
F-135	GP-020104.00		Crank For Feed Rocker Shaft (F)	(前)	1	1	
F-136	PN-000315.00		Crank For Feed Rocker Shaft (F) Pin	(前)	1	1	
F-137	SC-0162-5607		Screw (M5xL17) ==>M5xL15	가 (前)	1	1	
F-138	GP-016017.00		Bushing For Feed Rocker Shaft (F)	(前)	1	1	
F-139	GP-021549.00		Bushing For Feed Rocker Shaft (R)	(後)	1	1	
F-140	06-101R-106L		Oil Seal For Feed Rocker Shaft	(後)	1	1	
F-141	06-123R-106L		Bed Rubber Cap		1	1	
F-142	CL-000116.00		Collar For Feed Rocker Shaft		2	1	
F-143	04014SC-4517		Screw		2	1	
F-144	06-106A-106L		Crank For Feed Rocker Shaft (R)	(後) ( )	1	1	
F-145	16059SC-4113		Screw (M6xL12)	(後)	1	1	
F-146	GP-024048.00		Rubber For Rocker Shaft		1	1	





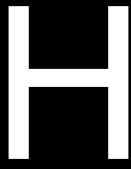


Ref. No.	Parts No.	note.	Name of Parts	品 名	Q' ty		Assembly No.
					1080	1082	
G-1	GP-016219,01		Lower Shaft (F)	前		1	
G-2	GP-023551,01		Lower Shaft (F)	前	1		
G-3	GP-020653,02		Lower Shaft (B)	後	1	1	
G-4	GP-020484,00		Coupling For Lower Shaft (F)	前	1	1	
G-5	SC-000706,00		Screw	前 "A"	1	1	
G-6	08037SC-4517		Screw	前 "B"	1	1	
G-7	GP-020485,00		Coupling Sleeve For Lower Shaft		1	1	
G-8	GP-020483,00		Coupling For Lower Shaft (R)	後	1	1	
G-9	SC-000706,00		Screw	後 "A"	1	1	
G-10	08037SC-4517		Screw	後 "B"	1	1	
G-11	RI-000017,00		O-Ring [ 12 ]	後 O- ( P 12)	1	1	
G-12	GP-025566,00		Oil Seal For Bushing (F)	(前) ( 20 X 32 X 8t)	1	1	
G-13	GP-020567,00		Bushing For Lower Shaft (F)		1	1	
G-14	GP-020568,00		Bushing Cover For Lower Shaft (F)		1	1	
G-15	GP-020570,00		Oil Pump Piston		1	1	
G-16	GP-020903,00		Piston Spring For Oil Pump		1	1	
G-17	44-134C-5700		Nipple For Bushing (F)		1	1	
G-18	SC-000644,00		Screw		1	1	
G-19	GP-016050,01		Bushing For Lower Shaft (R)		1	1	
G-20	07-003R-106L		Oil Seal For Bushing (R)	( 12 X 22 X 7t)	1	1	
G-21	44-134C-5700		Nipple For Bushing (R)		1	1	
G-22	GP-020387,00		Timing Pulley For Lower Shaft		1	1	
G-23	GP-025181,00		Timing Pulley Disk		1	1	
G-24	08017SC-B001		Screw		2	2	
G-25	06-002C-380L		C-Ring	C-	1	1	
G-26	GP-020420,00		Safety Clutch body		1	1	
G-27	GP-020421,00		Safety Piston		2	2	
G-28	GP-020902,00		Safety Spring		2	2	
G-29	08037SC-4517		Stopper Screw For Safety Piston		2	2	
G-30	14064SN-9311		Nut		2	2	
G-31	SC-000705,00		Screw	A	1	1	
G-32	SC-000741,00		Screw(M6, L=12, )	B	1	1	
G-33	GP-020837,01		Hook Base-L	(左) - Post		1	
G-34	GP-020838,01		Hook Base-R	(右) - Post	1	1	
G-35	07-016R-106L		Oil Seal For Hook Base (F)	(前)	1	2	
G-36	GP-021111,01		Lower Shaft Gear		1	2	
G-37	BR-000157,00		Bearing For Lower Shaft (F)	(前) ( 15 X 32 X 8t)	1	2	
G-38	GP-020661,00		Hook Base Cover		1	2	
G-39	04004MC-4517		Cover Adjusting Screw		3	6	
G-40	15084SC-8119		Cover fixed Screw		3	6	
G-41	07-022R-106L		O-Ring For Hook Base	O-	1	2	
G-42	BR-000157,00		Bearing For Lower Shaft (R)	(後) ( 15 X 32 X 8t)	1	2	
G-43	07-016R-106L		Oil Seal For Hook Base (R)	(後)	1	2	
G-44	07-014A-106L		Collar For Lower Shaft		1	2	
G-45	SC-0162-5607		Screw		1	2	
G-46	GP-020174,00		Spacer		1	2	
G-47	GP-020173,01		Coupling For Hook Shaft (D)	(下)	1	2	
G-48	05008MC-4517		Screw	(下)	2	4	
G-49	GP-020175,00		Dust Cover		1	2	
G-50	WS-000224,00		Washer	(下)	1	2	
G-51	RI-000067,00		Support Ring For Hook		1	2	
G-52	WS-000222,00		Washer		1	2	
G-53	GP-021568,00		Rubber For Hook Shaft "A" (U)	"A" (上)	1	2	
G-54	BR-000158,00		Hook Shaft Bearing "A"	"A" ( 10 X 26 X 8t , 6000)	1	2	
G-55	GP-021112,01		Hook Shaft Gear "A"	"A"	1	2	
G-56	04014SC-4517		Screw	"A"	2	4	



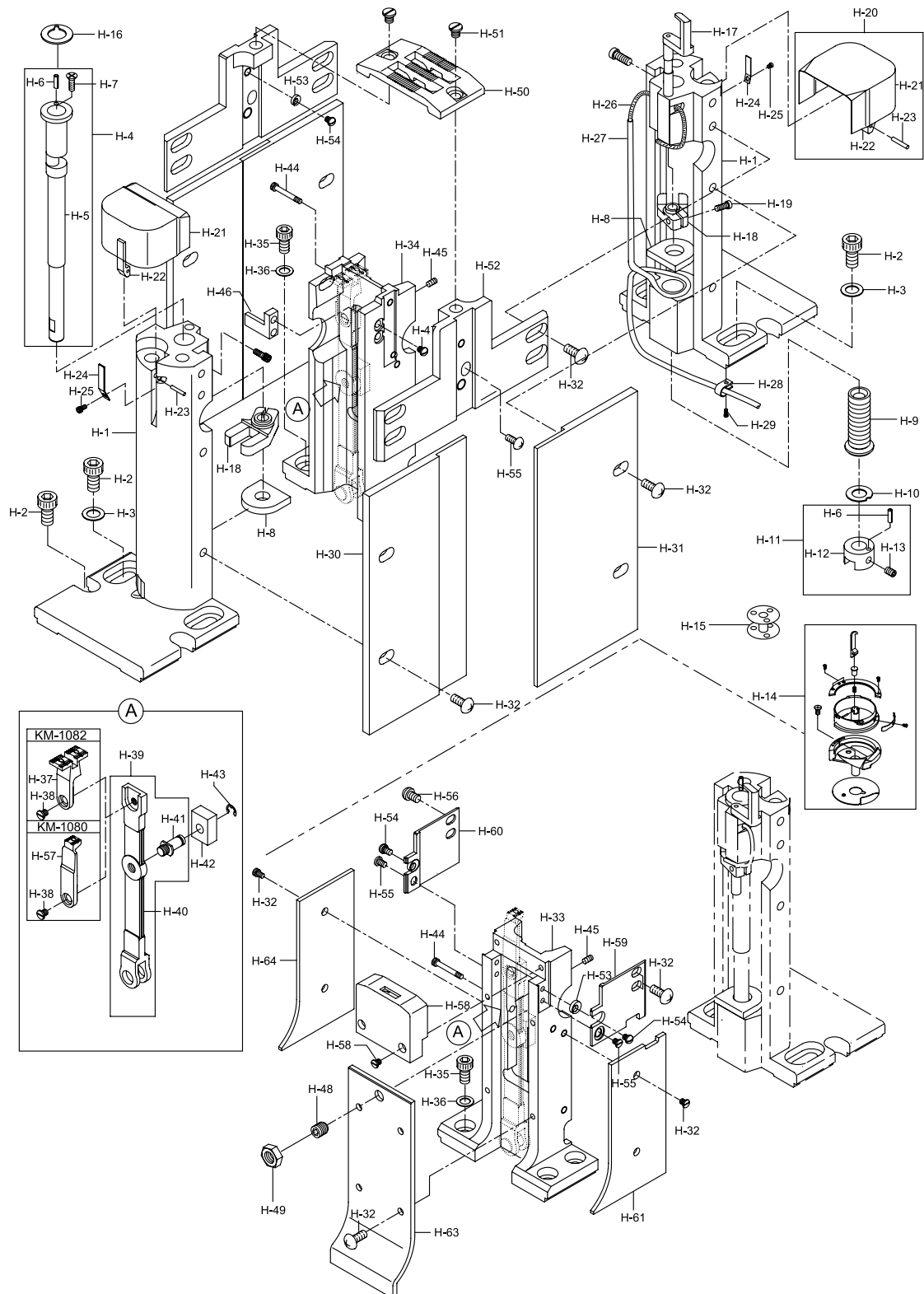


Ref. No.	Parts No.	note.	Name of Parts	품 명	Q' ty		Assembly No.
					1080	1082	
G-57	GP-021064,00		Hook Shaft "A"	"A"	1	2	
G-58	GP-021113,02		Hook Shaft Gear "B"	"B"	1	2	
G-59	04014SC-4517		Screw	"B"	2	4	
G-60	BR-000158,00		Hook Shaft Bearing "B"	"B" ( 10 X 26 X 8t , 6000)	1	2	
G-61	RI-000083,00		Hook Shaft C-Ring	C- #26	1	2	
G-62	GP-021279,00		Hook Base Cover Plug		1	2	
G-63	GP-021652,00		Opener Shaft		1	2	
G-64	WS-000223,00		Washer		1	2	
G-65	08044SR-4013		E-Ring [ 8]	E-	1	2	
G-66	BR-000159,00		Bearing For Opener Shaft (U)	(上) ( 10 X 22 X 6t , 6900Z)	1	2	
G-67	BR-000158,00		Bearing For Opener Shaft (D)	(下) ( 10 X 26 X 8t , 6000)	1	2	
G-68	GP-021110,00		Gear For Opener Shaft		1	2	
G-69	GP-021630,00		Bushing For Opener Shaft Gear		1	2	
G-70	04014SC-4517		Screw		2	4	
G-71	08067RB-A001		O-Ring	O- ( P10)	1	2	
G-72	SN-000102,00		Nut		1	2	
G-73	49A009S-811H		Nut		1	2	
G-74	GP-020839,00		Hook Base Cover-L	(左) - Post		1	
G-75	GP-020840,00		Hook Base Cover-R	(右) - Post	1	1	
G-76	GP-021027,00		Gasket For Hook Base Cover	가	1	2	
G-77	GP-020826,00		Nipple (B) For Hook Base Cover	(大)	1	2	
G-78	GP-021281,00		Nipple (S) For Hook Base Cover	(小)	1	2	
G-79	04010MC-7113		Screw (L=10)	"A"	7	14	
G-80	07016SC-4113		Screw (L=12)	"B"	2	4	
G-81	GP-025571,00		Oil Seal For Hook Base Cover	( 22 X 32 X 7t)	1	2	
G-82	08091SC-4113		Screw	"A"	1	2	
G-83	WS-000228,00		Washer		1	2	
G-84	08091SC-4113		Screw	"B"	1	2	
G-85	GP-023353,00		Adjusting Collar For Hook Base		1	2	



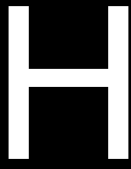
## Saddle & Post Mechanism

새들 및 포스트 관계



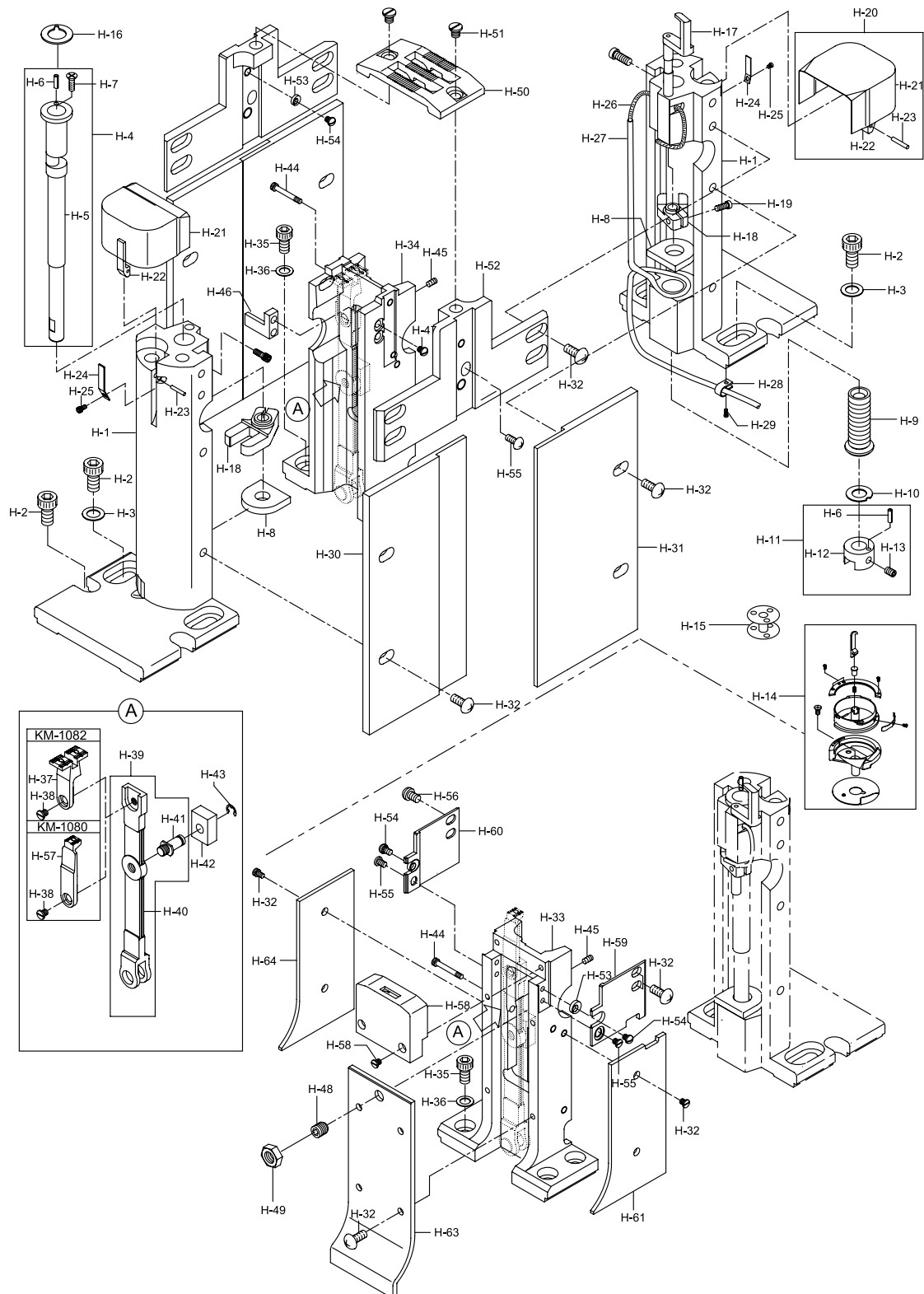


Ref. No.	Parts No.	note.	Name of Parts	品 名	Q'ty		Assembly No.
					1080	1082	
H-1	GP-018934,01		Saddle		1	2	
H-2	14002SC-4113		Screw [M6×P1.0, L=15]		3	6	
H-3	SW-0102-1011		Washer		2	4	
H-4	AS-005051,00		Hook Shaft Ass'y	(組)	1組	2組	
H-5	GP-018704,01		Hook Shaft		1	2	
H-6	PN-00028500		Spring Pin [ 3×L6]		2	4	
H-7	SC-000579,00		Screw (M3.5×P0.6,L=17.5)		1	2	
H-8	GP-018709,00		Felt For Hook Shaft		1	2	
H-9	GP-018705,01		Bushing For Hook Shaft		1	2	
H-10	WS-000181,00		Washer (D)	(下)	1	2	
H-11	AS-005052,00		Coupling For Hook Shaft (U) Ass'y	(上)(組)	1組	2組	
H-12	GP-018707,01		Coupling For Hook Shaft (U)	(上)	1組	2組	
H-13	05008MC-4517		Screw (M5×P0.8, L=8)	(上)	2	4	
H-14	GP-024898,00		Hook Ass'y	(組)	1	2	
H-15	GP-025064,01		Bobbin		1	2	
H-16	WS-000180,00		Washer (U)	(上)	1	2	
H-17	GP-020506,02		Opener		1	2	
H-18	GP-018708,00		Opener Shaft Crank		1	2	
H-19	SC-0211-7500		Screw (M4×P0.7, L=8)		1	2	
H-20	AS-005058,01		Hook Cover Ass'y	(組)	1組	2組	
H-21	GP-018720,01		Hook Cover		1	2	
H-22	GP-018739,01		Head Hinge For Hook Cover		1	2	
H-23	PN-000286,00		Pin For Hook Cover		1	2	
H-24	GP-018711,01		Plate Spring For Hook Cover		1	2	
H-25	08006SC-8118		Screw (M3×P0.5, L=5)		1	2	
H-26	44-0000-1230		Oil Wick For Saddle		1	2	
H-27	44-001C-5700		Oil Hose For Saddle		1	2	
H-28	10-065A-9577		Holder For Oil Hose		1	2	
H-29	22031SC-8118		Screw		1	2	
H-30	GP-015986,00		Saddle Cover (L)	(左)		2	
H-31	GP-015987,00		Saddle Cover (R)	(右)		2	
H-32	SC-000211,00		Screw		8	8	
H-33	GP-020297,01		Post		1		
H-34	GP-020108,02		Post			1	
H-35	14002SC-4113		Screw [M6×P1.0, L=15]		4	4	
H-36	SW-0107-9011		Washer		4	4	
H-37	GP-018997,00		Feed Dog			1	
H-38	SC-000623,00		Screw		1	1	
H-39	AS-005053,00		Feed Dog Lever Ass'y	(組)	1組	1組	
H-40	GP-018715,00		Feed Dog Lever		1	1	
H-41	GP-018716,01		Hinge For Feed Dog Lever		1	1	
H-42	GP-018717,02		Slid Block For Feed Dog Lever		1	1	
H-43	06-003C-7400		E-Ring [ ]	E-	1	1	
H-44	SC-000578,00		Adjusting Screw For Slid Block		1	1	
H-45	SC-0105-7500		Screw		1	1	
H-46	GP-018718,01		Guide Block For Feed Dog Lever	가		1	
H-47	SC-000597,00		Screw	가		2	
H-48	SC-000702,00		Screw [M6×P1.0,L=8]	가	1		
H-49	SN-000082-00		Nut [M6×P1.0,t=3.5]	가	1		
H-50	GP-018935,01		Needle Plate			1	
H-51	SC-000594,00		Screw			2	
H-52	GP-018712,02		Feed Dog Support			2	
H-53	GP-018713,00		Adjusting Cam For Feed Dog Support		2	2	



## Saddle & Post Mechanism

새들 및 포스트 관계



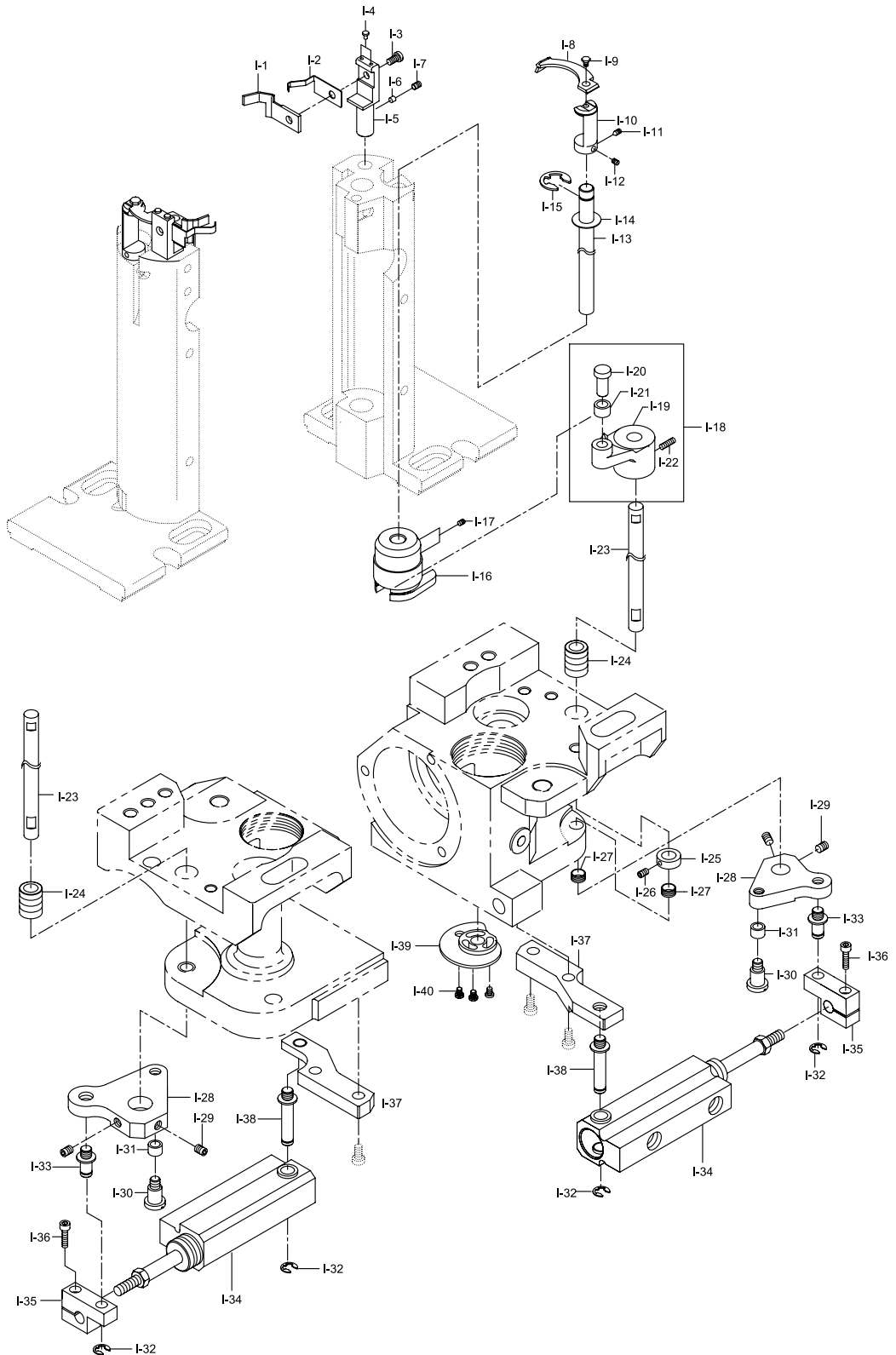


Ref. No.	Parts No.	note.	Name of Parts	品 名	Q' ty		Assembly No.
					1080	1082	
H-54	GP-018714,00		Screw (M3×P0.5)		2	2	
H-55	09018SC-8118		Screw (M4×P0.7, L=6.5)		2	2	
H-56	SC-000211,00		Screw (M4×P0.7, L=9)		4	8	
H-57	GP-028641,00		Feed Dog		1		
H-58	GP-029392,01		Needle Plate		1		
H-59	22031SC-8134		Screw (M4×P0.7)		2		
H-60	GP-020432,00		Feed Dog Support	(前)	1		
H-61	GP-020433,00		Feed Dog Support	(後)	1		
H-62	GP-015984,00		Post Cover (F)	(前)	1		
H-63	GP-015985,00		Post Cover (B)	(後)	1		
H-64	GP-020434,00		Post Side Cover		1		



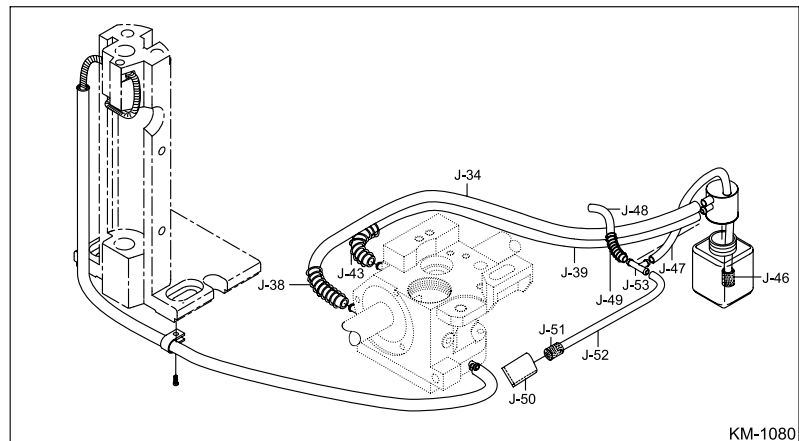
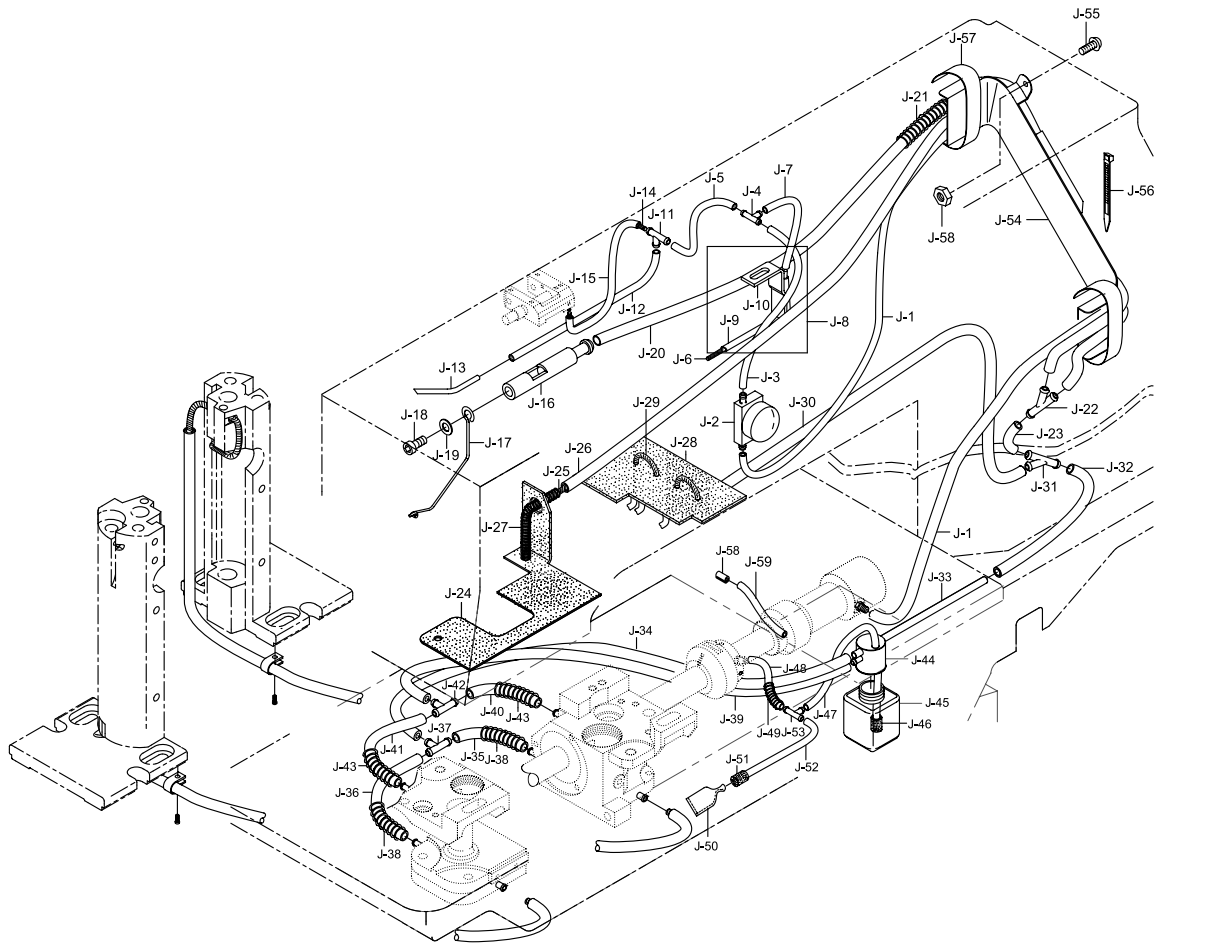
# Thread Trimmer Mechanism

사절 관계





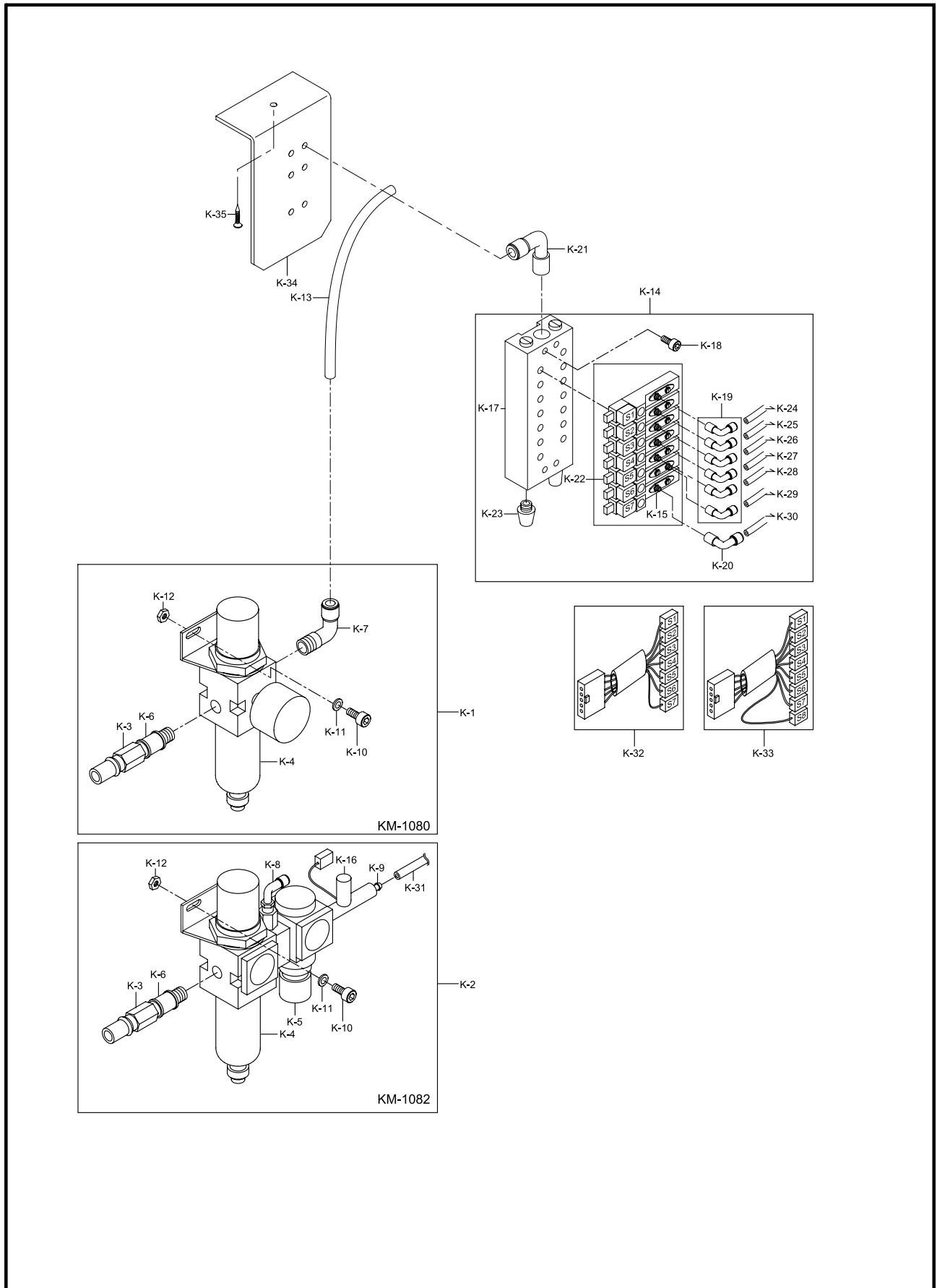
Ref. No.	Parts No.	note.	Name of Parts	品 名	Q'ty		Assembly No.
					1080	1082	
I-1	GP-020305,00		Fixed Mess		1	2	
I-2	GP-020519,01		Lower Thread Catcher		1	2	
I-3	SC-000598,00		Screw		1	2	
I-4	SC-000599,00		Screw		2	4	
I-5	GP-019547,00		Fixed Mess Base		1	2	
I-6	PN-000312,01		Pressure Pin For Base		2	4	
I-7	SC-0164-2700		Screw	(無頭)	2	4	
I-8	GP-020281,02		Moving Mess		1	2	
I-9	SC-000600,01		Screw		1	2	
I-10	GP-019047,01		Moving Mess Base		1	2	
I-11	SC-000595,00		Screw (3/16" n=32, L=4.5)	"A"	1	2	
I-12	SC-000596,00		Screw (3/16" n=32, L=5.5)	"B"	1	2	
I-13	GP-019046,01		Moving Mess Shaft "A"	"A"	1	2	
I-14	WS-000219,00		Washer For Moving Mess Shaft "A"	"A"	1	2	
I-15	06-020C-7400		E-ring [φ6]	E-	1	2	
I-16	GP-019056,01		Crank For Moving Mess Shaft		1	2	
I-17	05008MC-4517		Screw	(無頭)	2	4	
I-18	AS-005113,00		Thread Trimming Lever Ass'y	(組)	1set	2set	
I-19	GP-019572,01		Thread Trimming Lever		1	2	
I-20	PN-000301,00		Pin For Thread Trimming Lever		1	2	
I-21	GP-019573,00		Roller For Thread Trimming Lever		1	2	
I-22	SC-000716,00		Screw (M4×P0.7, L=6)		2	4	
I-23	GP-019623,01		Moving Mess Shaft "B"	"B"	1	2	
I-24	GP-020824,00		Bushing For Thread Trimming Shaft (B)	(大)	1	2	
I-25	CL-000105,00		Collar For Moving Mess Shaft "B"	"B"	1	2	
I-26	SC-0164-2700		Screw (M5×P0.8, L=5)	"B" (無頭)	1	2	
I-27	GP-020755,00		Bushing For Thread Trimming Shaft (B)	(小)	2	4	
I-28	GP-020574,02		Roller Lever For Thread Trimming Cylinder		1	2	
I-29	SC-000716,00		Screw (M4 XP0.7, L=5)		2	4	
I-30	GP-020575,02		Stud Screw "A" For Roller Lever	"A"	1	2	
I-31	GP-019573,00		Roller Lever For Thread Trimming Cylinder		1	2	
I-32	05-014C-1230		Stud Screw For Roller Lever	E-	2	4	
I-33	GP-020576,00		Stud Screw "B" For Roller Lever	"B"	1	2	
I-34	AS-005513,00		Pneumatic Cylinder Ass'y	(組)	1set	2set	
I-35	GP-020569,00		Block For Thread Trimming Cylinder		1	2	
I-36	07016SC-4113		Screw (M4 X P0.7, L=12)		1	2	
I-37	GP-020584,01		Fixed Block For Thread Trimming Cylinder		1	2	
I-38	GP-020587,00		Stud Screw For Fixed Block		1	2	
I-39	GP-020662,00		Cam For Thread Trimming		1	2	
I-40	04010MC-7113		Screw		3	6	



KM-1080



Ref. No.	Parts No.	note.	Name of Parts	품 명	Q' ty		Assembly No.
					1080	1082	
J-1	44-001C-5700		Oil Supply Hose		1	1	
J-2	GP-020835.00		Oil Gauge Window		1	1	
J-3	44-001C-5700		Oil Supply Hose For Oil Gage Windows		1	1	
J-4	GP-022124.00		Oil Terminal "A"	"A"	1	1	
J-5	44-001C-5700		Oil Supply Hose For Oil Terminal "A"	"A"	1	1	
J-6	44-0000-1230		Oil Wick For Upper Feed Driving Cam		1	1	
J-7	44-001C-5700		Oil Supply Hose For Upper Feed Driving Cam		1	1	
J-8	AS-005261.00		Oil Supply Pipe Ass'y For Upper Feed Driving Cam	(組)	1set	1set	
J-9	GP-020977.00		Oil Supply Pipe For Upper Feed Driving Cam		1	1	
J-10	GP-020975.00		Bracket For Oil Supply Pipe		1	1	
J-11	GP-022124.00		Oil Terminal "B"	"B"	1	1	
J-12	44-001C-5700		Oil Supply Hose For Upper Feed Driving Shaft		1	1	
J-13	GP-020972.00		Oil Supply Pipe For Upper Feed Driving Shaft		1	1	
J-14	44-0000-1230		Oil Supply Hose For Climb Device Body		1	1	
J-15	44-001C-5700		Oil Supply Hose For Climb Device Body		1	1	
J-16	GP-020973.00		Reflux Nipple For Upper Feed Driving Shaft		1	1	
J-17	GP-020974.00		Fixed Wire For Face Plate Part Felt	Head	1	1	
J-18	02014SC-7113		Screw(M4×P0.7, L=5)	Head	1	1	
J-19	06-036W-3800		Washer	Head	1	1	
J-20	GP-016421.00		Reflux Hose For Upper Feed Driving Shaft		1	1	
J-21	GP-021230.00		Reflux Hose For Upper Feed Driving Shaft	가 "A"	1	1	
J-22	GP-021573.00		Reflux Oil Terminal	(Y-Type)	1	1	
J-23	GP-016421.00		Connecting Hose "A" For Oil Terminal	"A"	1	1	
J-24	GP-020976.00		Face Plate Part Felt	Head	1	1	
J-25	44-0000-1230		Reflux Oil Wick For Face Plate Part Felt	Head	1	1	
J-26	GP-016421.00		Reflux Hose For Face Plate Part Felt	Head	1	1	
J-27	GP-020901.00		Reflux Hose Spring For Face Plate Part Felt	Head 가	1	1	
J-28	GP-021291.00		Reflux Felt For Arm		1	1	
J-29	44-0001-1230		Reflux Oil Wick For Arm		1	1	
J-30	GP-016421.00		Reflux Hose For Arm		1	1	
J-31	GP-021573.00		Reflux Hose Oil Terminal For Arm	(Y-Type)	1	1	
J-32	GP-016421.00		Connecting Hose "B" For Oil Terminal	"B"	1	1	
J-33	GP-021155.00		Fixed Pipe Oil Tank		1	1	
J-34	GP-016421.00		Oil Supply Hose For Hook Base	"A"	1	1	
J-35	GP-016421.00		Oil Supply Hose For Hook Base	"B"		1	
J-36	GP-016421.00		Oil Supply Hose For Hook Base	"C"		1	
J-37	GP-021572.00		Oil Supply Hose For Hook Base	(T-Type)		1	
J-38	GP-021229.00		Oil Supply Hose Spring For Hook Base		1	2	
J-39	GP-016421.00		Oil Supply Hose For Hook Base	"A"	1	1	
J-40	GP-016421.00		Oil Supply Hose For Hook Base	"B"		1	
J-41	GP-016421.00		Oil Supply Hose For Hook Base	"C"		1	
J-42	GP-021572.00		Oil Supply Hose For Hook Base	(T-Type)		1	
J-43	GP-021229.00		Oil Supply Hose Spring For Hook Base		1	2	
J-44	GP-021165.00		Oil Tank "A"	"A"	1	1	
J-45	GP-021166.00		Oil Tank "B"	"B"	1	1	
J-46	GP-022125.00		Oil Tank Nipple		1	1	
J-47	GP-016421.00		Reflux Hose "A"	"A"	1	1	
J-48	GP-016421.00		Reflux Hose "B"	"B"	1	1	
J-49	GP-021231.00		Guide Spring "C" For Reflux Hose "B"	"B" 가 "C"	1	1	
J-50	GP-021237.00		Reflux Felt For Oil Pan		1	1	
J-51	GP-022125.00		Reflux Filter For Oil Pan		1	1	
J-52	44-001C-5700		Reflux Hose "C"	"C"	1	1	
J-53	GP-022124.00		Oil Terminal (T-Type)	(T-Type)	1	1	
J-54	GP-021227.00		Oil Supply Hose Guide	가	1	1	
J-55	91-002S-3400		Screw ( AB 4.2 L=20)	가	2	2	
J-56	01A1435-811H		Bend Clip	밴드 클립 中	1	1	
J-57			Vinyl Tape	비닐 테이프	1	1	
J-58	44-069C-106L		Bed Nipple		1	1	
J-59	44S002S-306H		Bed Nipple Hose		1	1	



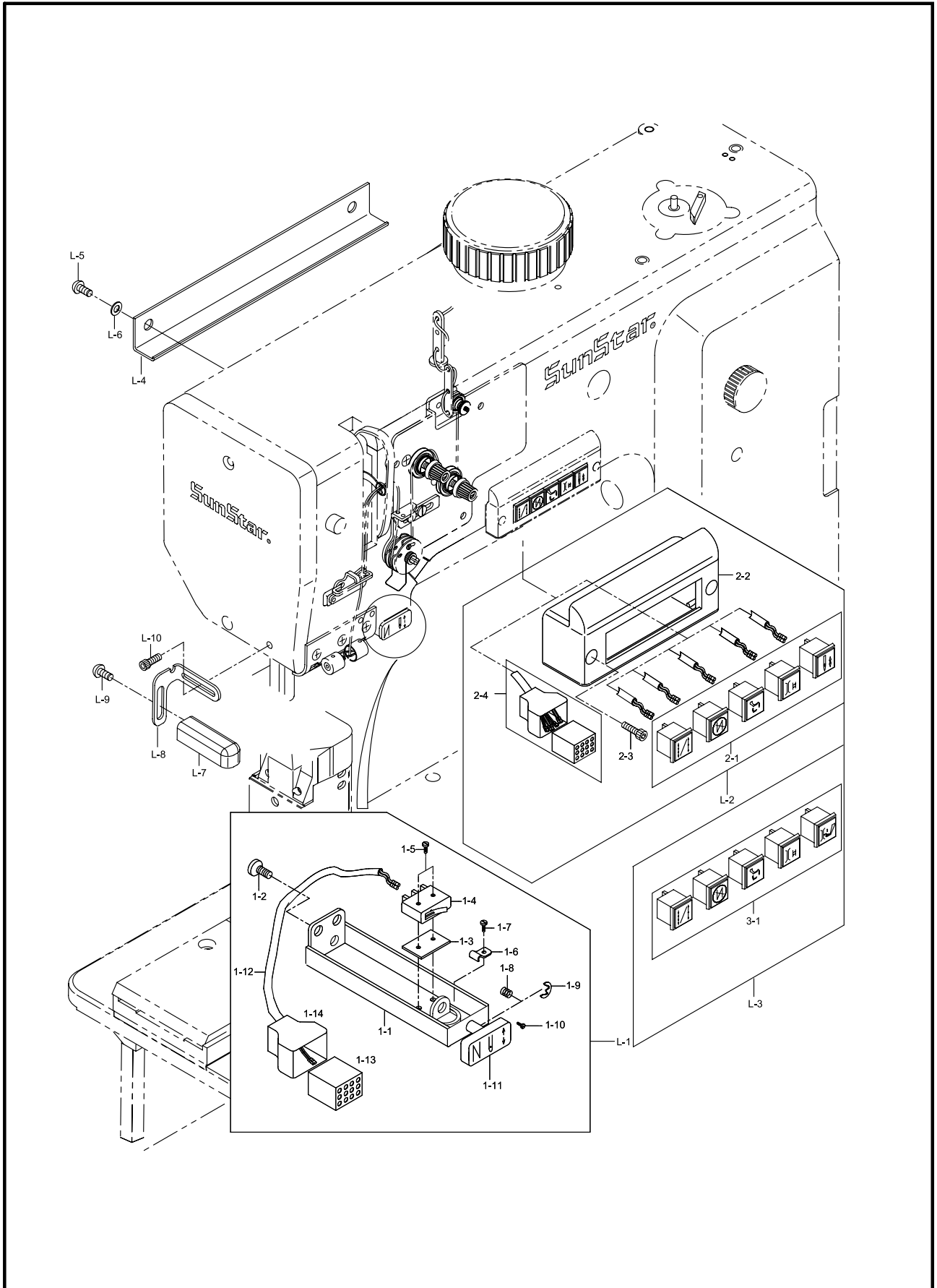


Ref. No.	Parts No.	note.	Name of Parts	품 명	Q' ty		Assembly No.
					1080	1082	
K-1	AS-005502,00		Filter Regulator Ass'y	필터 레귤레이터 (組)	1set		
K-2	AS-006659,01		Filter Regulator Ass'y	필터 레귤레이터 (組)		1set	
K-3	49A004S-811H		Quick Joint Plug Ass'y [CM20-CH20]	퀵 조인트 플러그 (組)	1set	1set	
K-4	GP-002323-00		Filter Regulator [AW20-02BG]	필터 레귤레이터	1	1	
K-5	GP-030888,00		Filter Regulator [AR20-02G]	필터 레귤레이터		1	
K-6	GP-022406,00		Slide Valve [SH-02]	슬라이드 밸브	1	1	
K-7	49-004C-5030		Fitting [KQ2L06-02S]	피팅	1		
K-8	GP-030889,00		Fitting [KQ2VF06-02S-I-L]	피팅		1	
K-9	GP-029929,00		Fitting [KQ2L04-01S]	피팅		1	
K-10	14014SC-4113		Screw (M5×P0.8 L=8 )	필터 레귤레이터 고정나사	2	2	
K-11	10-010W-7507		Washer	필터 레귤레이터 고정 와셔	2	2	
K-12	49A009S-811H		Nut	필터 레귤레이터 고정나사 너트	2	2	
K-13	05A052S-811H		Urethan Hose (Φ6)	우레탄 호스 (Φ6)	1	1	
K-14	AS-005508,00		Solenoid Valve Ass'y	솔레노이드 밸브(組)	1set	1set	
K-15	GP-001623-00		Solenoid Valve [SY3120-5LE-M5]	솔레노이드 밸브	7	7	
K-16	GP-030890,00		Solenoid Valve [VDW250-5G-01]	솔레노이드 밸브		1	
K-17	84-005A-4532		Manifold Block [SS5Y3-20-07]	매니폴드 블록 (7연)	1	1	
K-18	05014SC-4113		Screw (M4×P0.7 L=24)	매니폴드 블록 고정나사(M4×P0.7)	4	4	
K-19	GP-001851-00		Fitting [KQ2L04-M5]	피팅	6	6	
K-20	GP-022408,00		Fitting [KQ2L06-M5]	피팅	1	1	
K-21	49A014S-811H		Fitting [KQ2L06-01S]	피팅	1	1	
K-22	09-004S-5030		Plug [M-5P]	플러그	7	7	
K-23	49A020S-811H		Silencer [ASS-01]	소음기	2	2	
K-24	05A039S-811H		Back-Tack [Urethane Hose (Φ4)]	백택 [우레탄 호스 (Φ4)]	1	1	
K-25	05A039S-811H		Thread Trimming [Urethane Hose (Φ4)]	사절 [우레탄 호스 (Φ4)]	1	1	
K-26	05A039S-811H		Alteranting of Presser Foot [Urethane Hose (Φ4)]	단차량 [우레탄 호스 (Φ4)]	1	1	
K-27	05A039S-811H		Stitch Length Change [Urethane Hose (Φ4)]	땀수변환 [우레탄 호스 (Φ4)]	1	1	
K-28	05A039S-811H		Thread Tension Lift (Main)[Urethane Hose (Φ4)]	실 늦추기 (주) [우레탄 호스 (Φ4)]	1	1	
K-29	05A039S-811H		Thread Tension Lift (Sub)[Urethane Hose (Φ4)]	실 늦추기 (보조) [우레탄 호스 (Φ4)]	1	1	
K-30	05A052S-811H		Presser Foot [Urethane Hose (Φ6)]	노루발 [우레탄 호스 (Φ6)]	1	1	
K-31	05A039S-811H		Seam Center Guide [Urethane Hose (Φ4)]	봉합선 가이드 [우레탄 호스 (Φ4)]		1	
K-32	CA-002390,03		Pneumatic I/O Cable	공압 입출력 케이블	1		
K-33	CA-003038,00		Pneumatic I/O Cable	공압 입출력 케이블		1	
K-34	GP-030059,01		Manifold Bracket	매니폴드 브라켓	1	1	
K-35	91-002S-3400		Screw (AB 4.2 L=20)	매니폴드 브라켓 고정나사	2	2	



## Function Switch & LED Lamp Mechanism

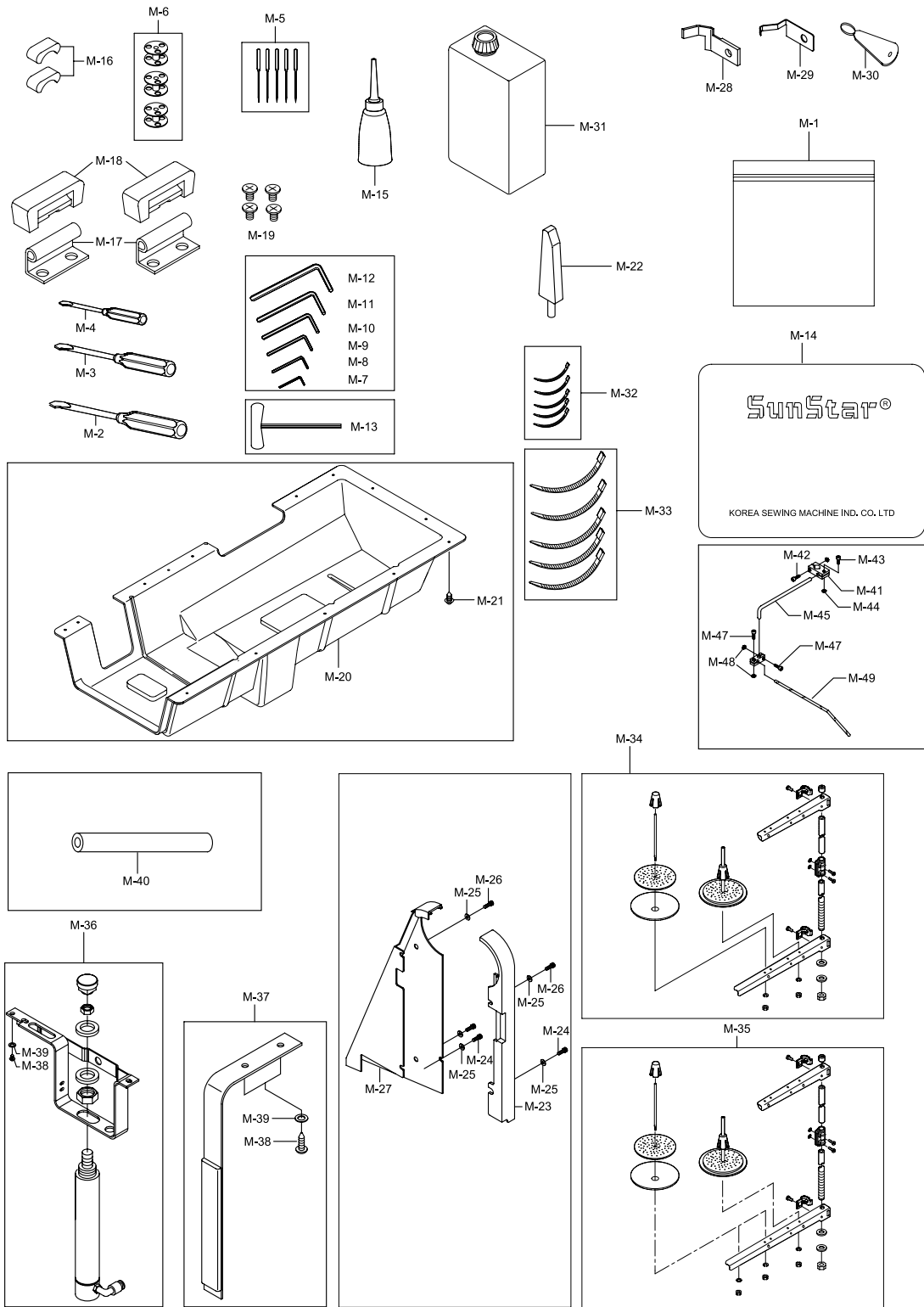
기능 스위치 및 LED 램프 관계





Ref. No.	Parts No.	note.	Name of Parts	품 명	Q' ty		Assembly No.
					1080	1082	
L-1	EA-000077,01		Reverse Button Switch Ass'y	역진버튼 스위치 (組)	1set	1set	
L-1-1	GP-020822,02		Reverse Button Case	역진버튼 케이스	1	1	
L-1-2	SC-0175-1230		Screw (11/64"n=40)	역진버튼 케이스 고정나사	2	2	
L-1-3	12-002A-7507		Insulcuted Film	스위치절연 필름	1	1	
L-1-4	EA-001361,01		Reverse Button S/W Assembly	역진버튼 스위치 (組)	1	1	
L-1-5	SC-0126-3800		Screw (3/32"n=56)	역진버튼 스위치 고정나사	1	1	
L-1-6	12-006P-7507		Stopper For Reverse Button	역진버튼 스톱퍼	1	1	
L-1-7	SC-0531-2302		Screw (9/64"n=40)	역진버튼 스톱퍼 고정나사	1	1	
L-1-8	12-004A-7507		Spring For Reverse Button	역진버튼 스프링	1	1	
L-1-9	06-033M-3800		E-ring (Φ3)	E-링 (Φ3)	1	1	
L-1-10	SC-0195-7507		Screw (M4×P0.7) L=5	역진버튼 안내핀 나사	2	2	
L-1-11	12-013A-7507		Reverse Button Switch	역진버튼 스위치	1	1	
L-1-12	CA-002397,01		Reverse Button Cable	역진버튼 케이블	1	1	
L-1-13	46-007A-2300		Reverse Button Plug	역진버튼 플러그	1	1	
L-1-14	46-009A-2300		Reverse Button Plug Tube	역진버튼 플러그 튜브	1	1	
L-2	EA-000074,00		Function Switch Ass'y	기능 스위치 (組)	1set		
L-2-1	EP-000231,00		Function Switch	기능 스위치	1set	1set	
L-2-2	GP-028718,00		Function Switch	스위치 커버	1set	1set	
L-2-3	04030MC-7113		Screw (M4×P0.7 L=30)	스위치 커버 고정나사	2	2	
L-2-4	CA-002391,01		Cable of function Switch	기능스위치 케이블	1	1	
L-3	EA-000111,00		Function Switch Ass'y	기능 스위치 (組)		1set	
L-3-1	EP-000232,00		Function Switch	기능 스위치	1set	1set	
L-4	GP-016559,00		Cable Cover	케이블 커버	1	1	
L-5	SC-A119-4119		Screw (11/64"n=40)	케이블 커버 고정나사	2	2	
L-6	06-036W-3800		Washer	케이블 커버 고정나사 와셔	2	2	
L-7	EA-000075,02		LED Lamp	LED 램프	1	1	
L-8	GP-029519,00		LED Lamp Bracket	LED 램프 브라켓	1	1	
L-9	10-003M-PT01		Screw (M4*L8)	LED 램프 고정나사	1	1	
L-10	02004SC-4113		Screw	LED 램프 브라켓 고정나사	2	2	







Ref. No.	Parts No.	note.	Name of Parts	품 명	Q' ty		Assembly No.
					1080	1082	
M-1	91-001C-1230		Accessories Bag	엑세서리 백	1	1	
M-2	91-002C-1230		Driver (Large)	드라이버 (大)	1	1	
M-3	91-003C-1230		Driver (Middle)	드라이버 (中)	1	1	
M-4	91-003C-1230		Driver (Small)	드라이버 (小)	1	1	
M-5	GP-025559,00		Needle (DP×17 #19)	바늘 (DP×17 #19)	1	2	
M-6	GP-025064,01		Bobbin(1.6)	보빈(1.6)	3	6	
M-7	91-007C-106L		L-Wrench (1.5mm)	L 렌치 (1.5mm)	1	1	
M-8	91-001C-2700		L-Wrench (2.0mm)	L 렌치 (2.0mm)	1	1	
M-9	91-004C-2700		L-Wrench (2.5mm)	L 렌치 (2.5mm)	1	1	
M-10	91-003C-2700		L-Wrench (3.0mm)	L 렌치 (3.0mm)	1	1	
M-11	91-001C-3800		L-Wrench (4.0mm)	L 렌치 (4.0mm)	1	1	
M-12	91-002C-2700		L-Wrench (5.0mm)	L 렌치 (5.0mm)	1	1	
M-13	GP-002083,00		T-Wrench (2.5mm) Long Type	T 렌치 (2.5mm)		1	
M-14	91-001C-8270		Head Cover	미싱커버	1	1	
M-15	91-011C-1230		Oiler	오일 주유통	1	1	
M-16	GP-021284,00		Nail For K-20	베드받침 고무	2	2	
M-17	GP-021049,00		Hinge	힌지쇠	2	2	
M-18	01-042R-1230		Hinge Rubber	힌지고무	2	2	
M-19	SC-000763,00		Screw	힌지쇠 고정나사	4	4	
M-20	GP-021232,01		Oil Pan	오일팬	1	1	
M-21	90S020S-306H		Fixed Screw For Oil Pan	오일팬 고정나사	10	10	
M-22	GP-016078,00		Head Rest	두부 지지대	1	1	
M-23	GP-016473,00		Belt Cover "A"	벨트커버"A"	1	1	
M-24	14014SC-7113		Screw (M5xL8)	벨트커버 고정나사	2	2	
M-25	01S128S-306H		Washer (φ6)	벨트커버 고정나사 와셔	4	4	
M-26	16059SC-4113		Screw (M6xL12)	벨트커버 고정나사	2	2	
M-27	GP-016476,00		Belt Cover "B"	벨트커버"B"	1	1	
M-28	GP-020305,00		Fixed Mes	고정메스	1	1	
M-29	GP-020519,01		Lower Thread Catcher	밑실 잡이	1	1	
M-30	91-007C-7400		Needle Thread Inserting Guide	실끼우기	1	1	
M-31	91-008C-1230		Oil	오일랜	1	1	
M-32	02-003A-2700		Band Clip (S)	밴드클립 (小)	5	5	
M-33	01A143S-811H		Band Clip (M)	밴드클립 (中)	5	5	
M-34	91-007A-2302		Thread Stand Assembly	실패꽃이 (組)	1		
M-35	91-008A-7400		Thread Stand Assembly	실패꽃이 (組)		1	
M-36	AS-006631,00		Presser Bar Lifting Cylinder Ass'y	노루발 올림 실린더 (組)	1set	1set	
M-37	EA-000090,00		Switch For Knee Lifting Ass'y	무릎올림 스위치 (組)	1set	1set	
M-38	16010SC-8330		Screw	브라켓 고정 나사	6	6	
M-39	02-105W-1230		Washer	브라켓 고정 와셔	4	4	
M-40	05A052S-811H		Urethan Hose (Φ6)	우레탄호스TU-0604B(검정색)	2	2	
M-41	GP-001517,00		Holder For Thread Guide Sub-Bar	실패꽃이 보조가이드 잡이	1	1	
M-42	SC-000168,00		Screw(M4xP0.7,L=20)	실패꽃이 보조가이드 잡이 고정나사"A"	1	1	
M-43	07016SC-7113		Screw(M4xP0.7,L=12)	실패꽃이 보조가이드 잡이 고정나사"B"	1	1	
M-44	SN-000026-00		Nut(M4xP0.7)	실패꽃이 보조가이드 잡이 고정너트	2	2	
M-45	GP-001514,00		Thread Guide Sub-Bar	실패꽃이 보조가이드	1	1	
M-46	GP-001516,00		Holder For Thread Guide Bar	실패꽃이 보조가이드 잡이	1	1	
M-47	07016SC-7113		Screw(M4xP0.7,L=12)	실패꽃이 가이드 잡이 고정나사	2	2	
M-48	SN-000026-00		Nut(M4xP0.7)	실패꽃이 가이드 잡이 고정너트	2	2	
M-49	GP-001515-00		Thread Guide Bar	실패꽃이 가이드	1	1	