



Operating Instruction 使用说明书

ELECTRIC STEAM GENERATOR

ST-21A

Before operating this oven,
Please read these instructions completely.
使用前，请认真参阅本说明书。

CONTENTS

Summary.....	1
Specifications.....	1
Operation	1
Note	2
Common malfunctions and exclusion methods.....	3
Ironing temperature of common materials	3
Electrical schematic	4
Parts Details	5

Summary

ST-21A is a portable micro electric heating steam generator with iron. It is a new ironing equipment developed successfully by our company using new technology, new technology, new materials, new components and other latest scientific and technological achievements. Machine using a single-phase 220 V power supply ,which produces steam with a pressure of 0.35 MPa transported to the steam iron for textile and clothing as the whole ironing.

ST-21A made of S304 stainless steel, the furnace tank of this machine is durable and has the characteristics of fast boost pressure and steam drying.

The machine is equipped with a solenoid valve, using the switch on the handle of the iron, can control the steam on or off to control whether the iron through steam heating and spray steam ironing, for the best ironing effect. Therefore, this is an ideal steam supply equipment or ironing equipment, suitable for the vast number of garment production enterprises and hotels, families, self-employed service operators to use energy-saving, efficient, environmental protection, safety equipment.

The machine has anti-dry burning over-temperature protection device, when over-temperature can automatically cut off the heating element power supply. Safety valves are also installed to prevent malfunctions due to accidental overpressure and to ensure the safety of equipment and persons

Specifications

Model	ST-21A
Heating power	1.2kW
Pressure	0.35MPa (3.5bar)
Steam production	1.6kg/h
Temperature	148°C
Power supply	220V/ 1PH

Operation

1. Wiring

The machine must have reliable grounding to ensure that the voltage of the power supply is in accordance with the voltage of the equipment.

2. Fill with water

This equipment is equipped with a steam generator which needs to be manually filled with water. It is necessary to remove the safe reading (counterclockwise) and then fill the steam generator with a funnel and water measuring cup. The maximum capacity of this equipment is

3.5 liters. After filling, install the safety valve to ensure that no water is poured onto the machine

3. Operate

- 1) Connection of the steam pipe: Connect the end of the steam pipe to the valve and carefully twist the clasp.
- 2) Connection of iron: Connect to steam generator with four-core plug equipped with iron, insert and fasten plug
- 3) Plug in
- 4) Turn on steam generator power switch, heating indicator light, start heating, water level indicator light at the same time, water burner heating takes about 10-12 minutes, when the heating indicator lights out, indicating that the steam generator has reached the steam pressure can start to work, can be through the pressure gauge indication, check the steam generator pressure, the maximum pressure of this machine is 3.5 BAR.
- 5) Turn on the iron power switch 2-3 minutes before starting ironing, and adjust the temperature adjusting dial on the iron to the desired temperature, press the fretting switch on the ironing bucket and start steam ironing.
- 6) The volume of steam can be adjusted by the steam solenoid valve on the steam generator.
- 7) During the ironing process, if there is no steam generated in the iron, check whether there is water in the steam generator. if there is no water, turn off the power switch of the steam generator and hot bucket and unplug the power. wait for 10-15 minutes until the steam generator is completely cooled, press the safety valve to slowly open counterclockwise and then add water. after re-heating, continue ironing. (Special note: Stop opening when steam is ejected from the side of the valve body. To prevent personal injury, you must turn off the steam generator switch and hot bucket power switch after the steam is fully released and check that the pressure gauge is displayed at 0.) After the work is done, you must turn off the steam generator switch and the hot bucket power switch and unplug the main power supply. In order to avoid pressure in the machine, release the relief valve (special note: stop opening when there is steam ejection on the side of the relief valve body, to prevent personal safety, after the steam is completely released and check that the pressure gauge shows 0, then all open, but be sure to remember that the safety valve should be re-installed when using the machine again.)

Note

- 1.The power outlet shall match the plug and shall have a safety ground wire to prevent electric shock accident.
- 2.Use should not block both sides of the heat dissipation window to facilitate heat dissipation,but also should prevent moisture, to ensure the internal control components of the normal working environment conditions.
3. When need overhaul or adjust, should ask professional maintenance personnel to operate.

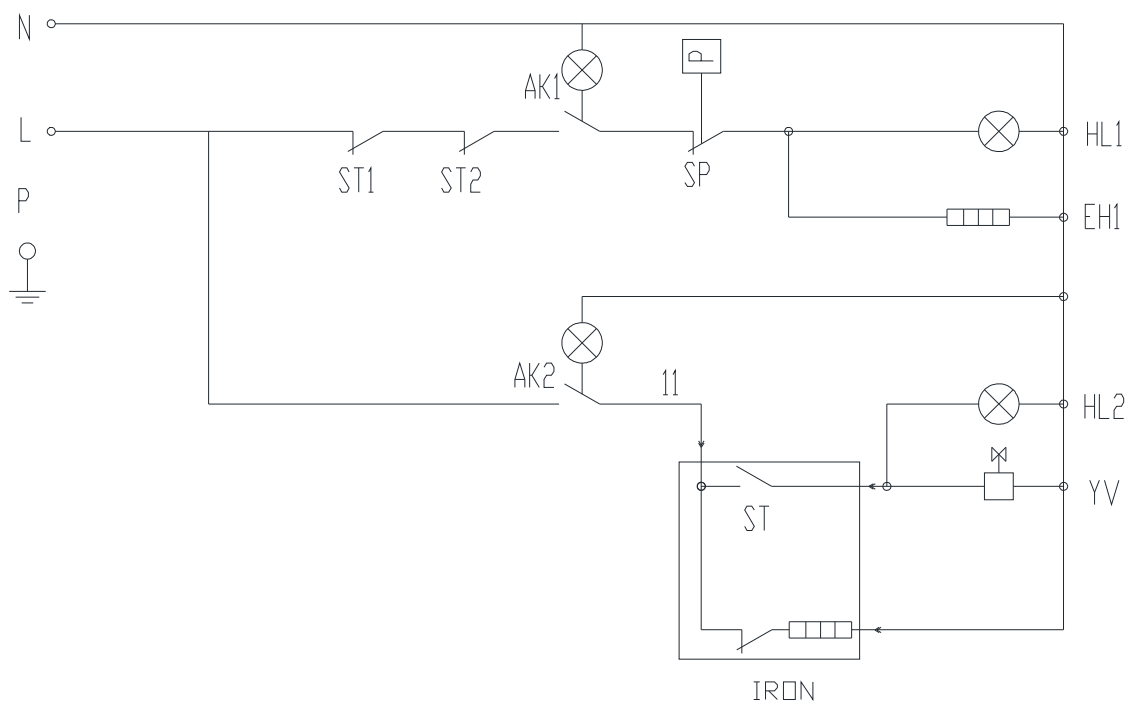
Common malfunctions and exclusion methods

Malfunctions	Exclusion methods
The generator has pressure and no steam outflow.	<ol style="list-style-type: none"> 1. Check that the iron power switch is open 2. Check that the valve is closed. 3. Check that iron wire for damage. 4. Check that the coil of the steam valve is burned out. 5. Check if the iron button and switch damaged.
After the s the current is switched on, the steam generator does not generate pressure.	<ol style="list-style-type: none"> 1. Check that the generator have water or not 2. Check that if the generator heating element broken 3. Check that the if pressure control broken
Steam leaks from the relief valve	<ol style="list-style-type: none"> 1. Check whether the pressure gauge has exceeded the maximum pressure 0.35Mpa, if it has exceeded the pressure controller in the generator to be checked for damage. 2. Check that the safety valve washer is hardened or broken. 3. Check whether the safety valve is damaged, the part is very important, if there is a problem must be replaced.

Ironing temperature of common materials

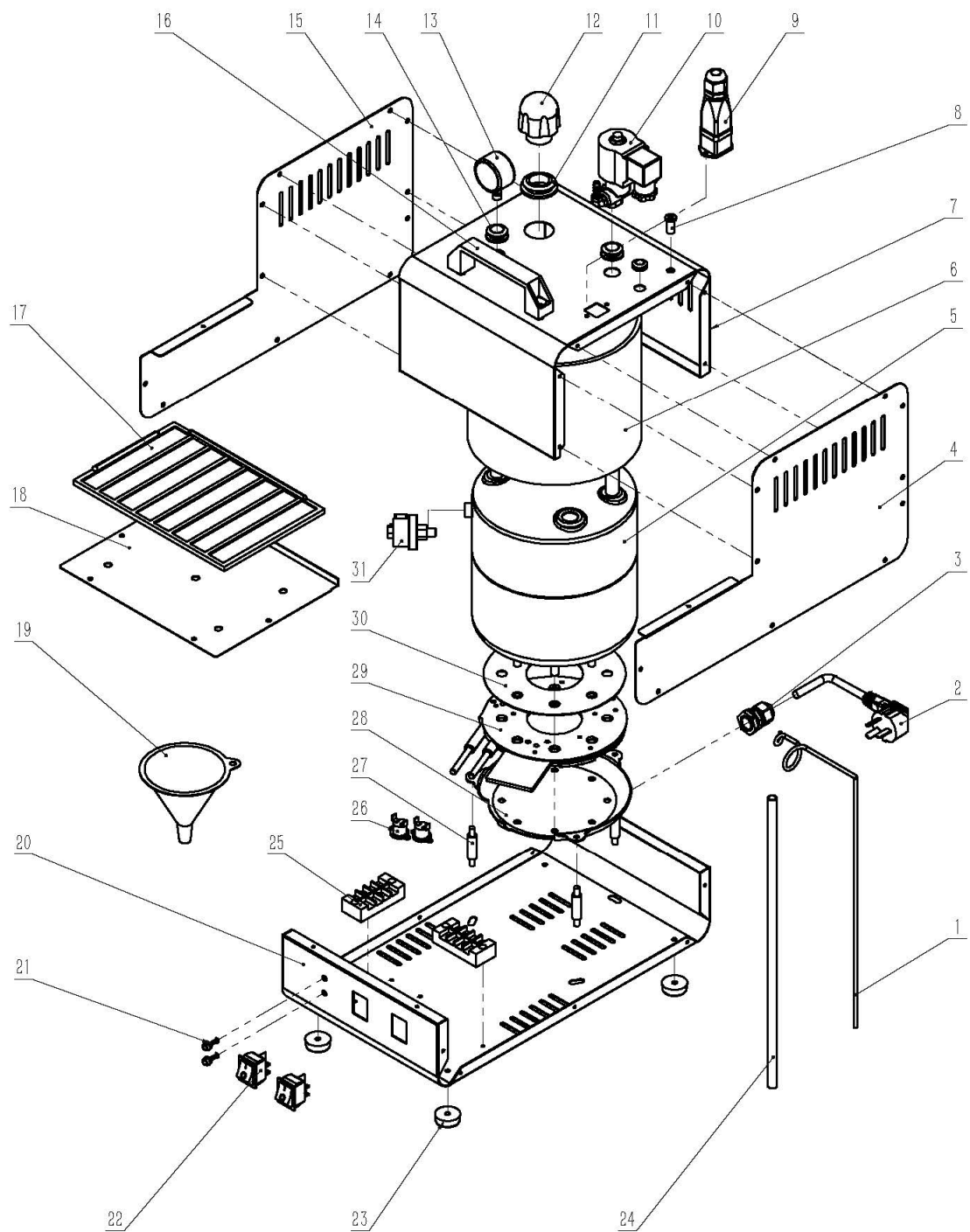
- 1、Nylon - 85°C
- 2、Textile fabric - 116°C
- 3、Wool -147°C
- 4、Cotton -178°C
- 5、Linen 210°C

Electrical schematic



	No.	Description	Model	Quantity	
1	ST1	Temperature	K1-31 260°	1	AC250V 16A
2	ST2	Temperature	K1-31 200°	1	AC250V 16A
3	AK1,2	Switch	KCD2-21N	2	AC220V
4	HL1,2	Indicator light	MDX11A 220V	2	
5	SP	Pressure control	T120 4BAR	1	
6	YV	Solenoid valve	ZCQ-20B-10	1	AC220 G1/4
7	EH1	Heating Element	1.25KW	1	220V
8	XT1,2	Connecting terminal	TB2503	2	
9	XS	4-hole connector		1	

Parts Details



PARTS LIST		
No.	Description	Quantity
1	Spring spacer bar	1
2	Power line	1
3	Wire buckle PG11	1
4	Right side plate	1
5	Generator	1
6	Insulation cotton	1
7	Top cap	1
8	Spring brace seat	1
9	Four-core aviation socket	1
10	Solenoid valve	1
11	Silica gel washer 22	1
12	Safety valve	1
13	Pressure meter	1
14	Silica gel washer 14	2
15	Left side plate	1
16	Plastic handle	1
17	Iron Pad	1
18	Placement boards	1
19	Plastic funnel	1
20	Base plate	1
21	Indicator light	Red1,Green1
22	Ship Switch	2
23	Rubber foot pads	4
24	Water level gauge pipe	1
25	Connecting terminal	2
26	Temperature	2
27	Fixed stud	3
28	Generator body fixing plate	1
29	Heating element	1
30	Graphite pad	1
31	Pressure switch	1