

使用说明书
OPERATION MANUAL
零件手册
PARTS BOOK



1. To avoid personal injury, never operate the machine with any of the belt cover, finger guard of safety devices removed.
2. To prevent possible personal injuries caused by being caught in the machine. Keep your fingers, hand and clothes away from the handwheel cover and the motor while the machine is in operation. In addition, place your feet around the machine.
3. To avoid personal injury, never put your hand under the needle when you turn ON the power switch or operate the machine.
4. To avoid personal injury, never put your fingers into the thread take-up cover while the machine is in operation.
5. To avoid possible personal injuries caused by the machine is in operation. To prevent possible injury to hands, be sure to keep your hands away from the vicinity of the hook during operation. In addition, be sure to turn OFF the power to the machine when replacing the bobbin.
6. To avoid possible personal injuries, be careful not to allow your fingers in the machine when singeing or sewing with the machine head.
7. To avoid possible accidents because of abrupt start of the machine, turn OFF the power to the machine when tilting the machine head.
8. If your machine is equipped with a serve-motor, the motor does not produce noise while the machine is at rest. To avoid possible accidents due abrupt start of the machine, be sure to turn OFF the power to the machine.
9. To prevent possible occurrence of electric shock or damaged electrical components), turn OFF the power switch in prior to the connection/disconnection of the power plug.

NOTE:
Securely tighten the nut ④, so that the two rubber cushions ② and the washer ③ are securely clamped and so that the cotton stand ① does not move



-1-

1. 当接通电源或机器运转时，请勿将手与针接触。
2. 机器运转时，请勿将手指伸入线梭行的罩内。
3. 操作者用手送料时，请勿将手指插入针架。
4. 机头启动及关车时，一定要切断电源。
5. 操作者离开机器时，必须关闭电源。
6. 机器运转时，绝不允许手或头以任意的方向靠近上轮、线绕座。
7. 只有当停针时，才能装脱防护罩或只保护罩。
8. 不得用嘴吹等或类似物清除机头表面的灰尘。

9. Never touch your finger into the machine when the machine is powered on or while it is operating.

10. Never touch your finger into the protection cover of take-up lever during operation of the machine.

11. The operator must not put his finger into the needle guard bracket when he feeds the sewing materials by hand.

12. Operator must trim off the electricity supply before he turns over the machine head or removes the hand cover.

13. The operator must turn off the electricity supply before he gets away from the machine.

14. Prohibit the head, hands and anything to approach the upper wheel and bobbinder while the machine is operating.

15. Never remove or mount the protection cover or other protection devices before the machine is stopped.

16. Never wipe up the surface of machine head using paint thinner such as acetone.

初次使用缝纫机前需添加润滑油以保证机器各部件的润滑,以延长机器寿命

1. 将油孔塞①打开
2. 将白油注入头加油孔中
3. 加油过程中观察测量视窗②,使油量计③稳定在下基线之间

注意

- (1) 油量计不可超过视窗上基线
- (2) 如油量计③超出下基线,则必须加润滑油

Before the first time use this machine, you need to add oil to ensure the lubrication of the mechanical parts of the machine to prolong the service life of the machine, to prolong the service life of the machine.

1. Open the oil rubber ①
2. add oil into the machine
3. look at the oil window ② during adding oil, to make the oil gauge ③ is steable between the top and bottom baselines.

NOTE

- (1) The oil gauge can not be over the top baseline in the window.
- (2) If the oil gauge ③ is lower than the bottom baseline, machine must be added oil.



-2-

-5-

与轴心最低位置齐平(如图 2)。在 2.2mm 轴心和规格), 到达此位置时与轴轮之啮合开始位置。旋紧轴心(2)并转动轴心 3 圈。如前所述, 将轴心 1 上移至与轴轮啮合位置(为 0.5~0.7mm)并转动轴心 3 圈。将轴心 1 与轴心 2 之间的距离调至 0.5~0.7mm 并转动轴心 3 圈。将轴心 1 与轴心 2 的轴心一致。此步骤使轴心 1 与轴心 2 之间的距离为 0.05mm。

3. 拆下固定轴心 1 的 [3] 个。

The top of the rotary hook ① should be aligned with the center of the needle ② when the needle bail ③ moves up 1.6mm (2.2mm for -M and H specifications) from its lowest position to the position where the needle bail ③ is aligned with the lower edge of the needle hole (as shown in the illustration). The distance from the upper edge of the needle hole to the rotary hook tip will be 0.5 to 0.7mm at this time.

1. Turn the machine pulley to raise the needle bail ③ from its lowest position until reference line B is aligned with the needle bail ③.

2. Loosen the set screws ④, and then align the tip of the rotary hook ① with the center of the needle ②.

3. Securely tighten the set screws ④.

-9-

12-

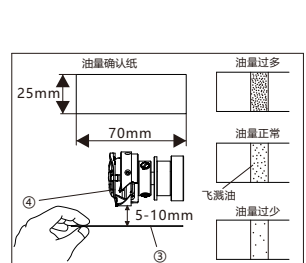
-15-

-10

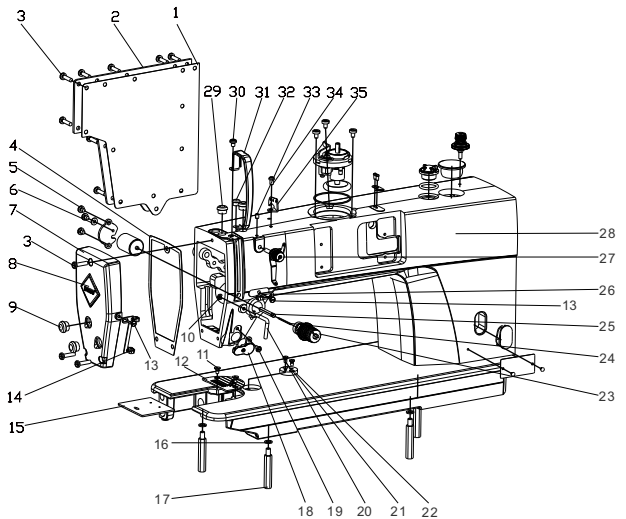
—

旋梭的油量是用旋梭油量调节螺钉①和螺钉②来调节：拧紧(向右转动)旋梭油量调节螺钉①，拧紧(向右转动)旋梭油量调节螺钉②，旋梭油量增多，反之旋梭油量将减少，直至获得适当供油量为止。

调节油量后缝制机在进行约2小时的缝制后，应检查油量，油量不足时，应予以补充。



1. 机壳分组件/Machine frame&miscellaneous cover components

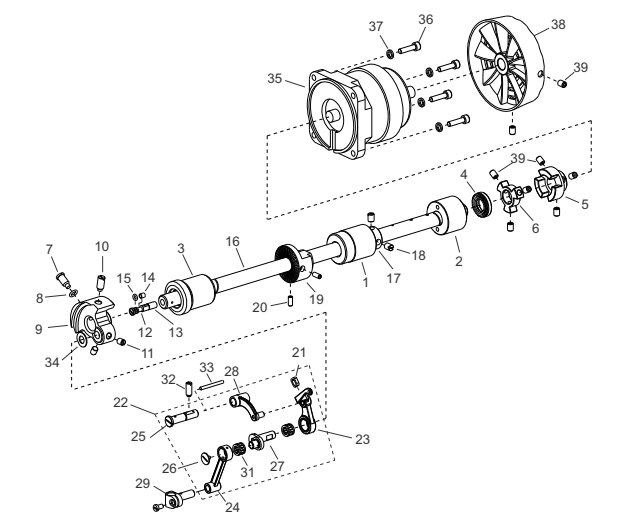


-18-

序号 Ref.No.	物料号 Part.No.	名称 Name	Description	数量 Q'ty	备 注 Remark
36	301220040	D8双步进绕线器		1	
37	301600047	电锁螺钉		3	
38	301590371	偏心轮板螺钉		2	
40	301350028	割线刀		1	
41	301130152	5550油窗O型圈		1	
42	301070082	9200-D高油窗		1	
43	301220092	机头小头线组件大		1	
44	301130085	上盖橡皮圈		1	
45	301070095	双步进油窗		1	
46				1	
47	301140695	松线电磁盖板		1	
48	302160316	送线器组件		1	
49				1	

-21-

2. 上轴、挑线分组件/Main shaft&thread take-up components

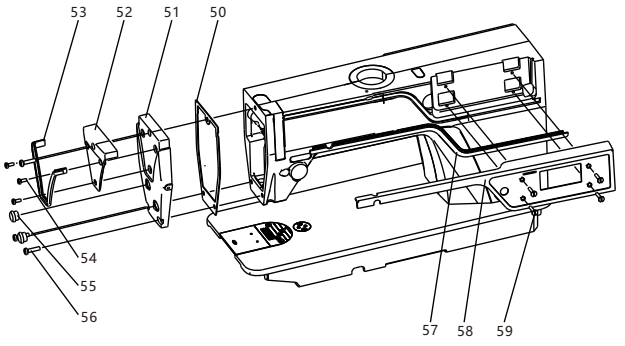


-24-

序号 Ref.No.	物料号 Part.No.	名称 Name	Description	数量 Q'ty	备 注 Remark
1	504010078	双步进电脑后窗板		1	
2	301130167	D8双步进后窗板垫		1	
3	301590296	5550后窗板螺钉1-6		11	
4	301130284	面板		1	
5	301590413	D10面板垫		1	
6	301140695	D90松线电磁盖板		1	
7	604010069	D90面板 (D9A)		1	
8		螺钉		2	
9	301130151	针杆曲柄螺孔塞(黑)		2	
10		螺钉		1	
11	301590284	5550针板螺钉6-2		2	
12	301180092	四角针板		1	
13	301590297	5550线勾螺钉		3	
14	301560006	9200左线勾		1	
15	301180102	5550推板		1	
16	301610110	6150弹性垫片		4	
17	301590308	D8双步进底板支柱		2	
18	301220084	电子夹线器		1	
19	301590413	591靠窗盖板螺丝		1	
20	301140427	9200摆线调节勾		1	
21	301590283	5550靠边脚座螺钉		2	
22	301140541	5550夹边脚座		1	
23	301220036	D7普通夹线器组件		1	
24				1	
25	301050073	5550松线螺钉		1	
26	301590011	5550右线勾		1	
27	302001009	过线器7200		1	
28	620010009	D105精工机壳		1	
29	301130147	挑线连杆销螺孔塞		4	
30	301590303	后窗板螺钉加长		7	
31	301070137	双步进挑线杆护罩		1	
32	301130147	挑线连杆销螺孔塞		4	
33	301140045	五线过线管压板		1	
34	301590381	挑线杆连销螺钉		3	
35	301140476	0302三眼过线		1	

-19-

1. 机壳分组件/Machine frame&miscellaneous cover components

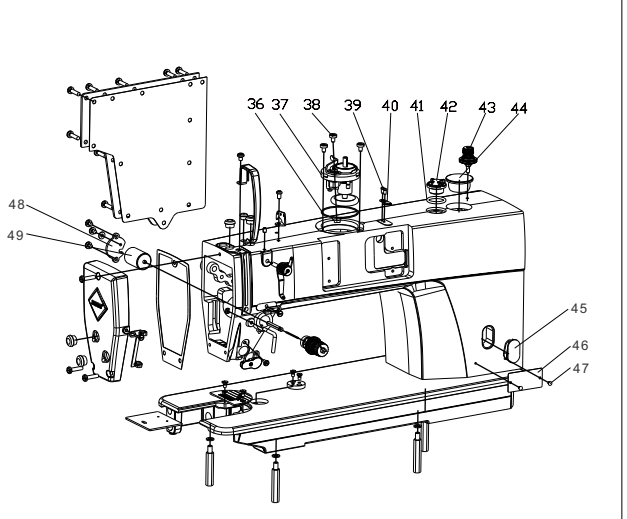


-22-

序号 Ref.No.	物料号 Part.No.	名称 Name	Description	数量 Q'ty	备 注 Remark
1	301030124	上轴中轴套	Bearing support	1	
2	301030183	上轴后轴套	Bearing support	1	
3	301030144	上轴前轴套	Bearing support	1	
4	301130221	油封φ15	Oil seal	1	
5	301430005	联轴器	Coupling	1	
6	301430004	内联轴器	Coupling	1	
7	301590269	螺钉	Screw SM9/32"×28L=14.5	1	
8	301130224	O型圈	O-ring	1	
9	301310155	针杆曲柄	Counter weight	1	
10	301590270	螺钉	Screw SM9/32"×28 L=16	1	
11	301590361	螺钉	Screw SM11/64"×28 L=7	1	
12	301130141	曲柄油量调节销	Adjusting pin	1	
13	301260005	曲柄油量限制毡	Felt	1	
14	301130142	曲柄油量调节销套	Sleeve of adjusting pin	1	
15	301130143	O型圈	O-ring	1	
16	301020246	上轴	Main shaft	1	
17	301090062	上轴挡圈	Thrust collar	1	
18	301590361	螺钉	Screw SM11/4"×40 L=8	2	
19	301610115	螺钉	Screw SM11/64"×40 L=10	2	
20	301590324	挑线杆防油套	Oil resistant cover	1	
21		螺钉	Screw M6 L=8	8	
22		挑线杆	Electromagnet	1	
23	301160155	针杆连杆	Needle bar crank rod	1	
24		咬链轴	Thread take-up crank shaft	1	
25		螺钉	Screw SM9/64"×40 L=6	1	
26		挑线曲柄	Needle bar crank	1	
27		挑线连杆	Thread take-up bar	1	
28		针杆连接柱	Needle bar holder	1	
29		螺钉	Screw SM9/64"×40 L=6	1	
30		轴承	Bearing	2	
31	301240012	轴承	Screw SM15/64"×28 L=15	1	
32	301590381	螺钉	Screw SM15/64"×28 L=15	1	
33		挑线连杆销油线	Oil thread	1	
34	301610100	针距曲柄护板	Protective plate	1	
35	301640045	上轴电机	Motor	1	
36	301590316	螺钉	Screw M5 L=20	4	
37	301610102	弹簧垫圈	washer	4	
38	301070250	手轮	Head wheel	1	
39	301590324	螺钉	Screw M6 L=8	8	

-25-

1. 机壳分组件/Machine frame&miscellaneous cover components

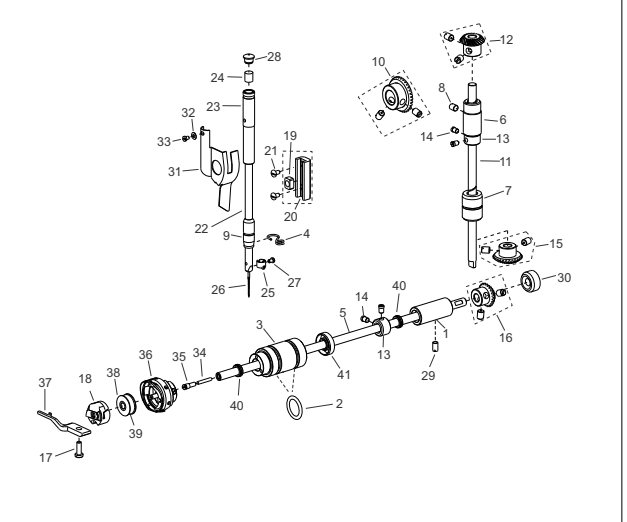


-20-

序号 Ref.No.	物料号 Part.No.	名称 Name	Description	数量 Q'ty	备 注 Remark
50	301130168	D9面板垫		1	
51	504010080	D9面板		1	
52	301070112	D9面板压板		1	
53	301070112	D9面板压板		1	
54	301590063	漆油器盖螺钉		1	
55	301130151	针杆曲柄螺孔塞		2	
56	301590303	后窗板螺钉加长		7	
57	301070113	D9前面板长		1	
58	301070113	D9前面板长		1	
59	301590124	松线曲柄螺钉		12	

-23-

3. 针杆、勾线分组件/Needle bar &Hook of driving shaft components



-26-

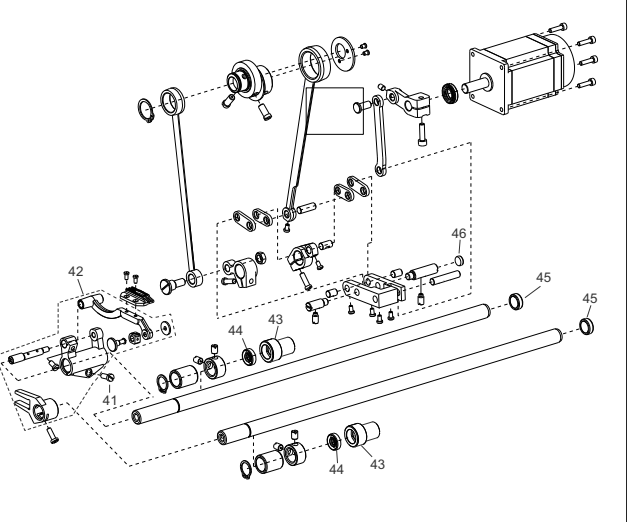
序号 Ref.No.	物料号 Part.No.	名称 Name	Description	数量 Q'ty	备 注 Remark
1	301030158	下轴后轴套	Bearing support	1	
2	301130193	O型圈	O-ring	2	
3	301150162	下轴前轴套	Bearing support	1	
4	301020245	针杆下轴衬套线钩	Needle bar thread guide	1	
5	301020245	下轴	Hook driving shaft	1	
6	301030299	竖轴上轴套	Bearing support	1	
7	301030169	竖轴下轴套	Bearing support	1	
8	301030292	螺钉	Screw SM15/64"×28 L=7	1	
9	301040011	针杆下轴衬套	Bearing support	1	
10	301020258	上轴伞齿轮	Gear	1	
11	301020258	螺钉	Screw SM1/4"×40" L=8	2	
12	301040011	竖轴上伞齿轮	Gear	1	
13	301090058	挡圈	Thrust collar	2	
14	301590675	螺钉	Screw SM1/4"×28 L=4	4	
15	301040012	竖轴下伞齿轮	Gear	1	
16	301040009	螺钉	Screw SM1/4"×40" L=8	2	
17	301590063	螺钉	Screw SM1/4"×40" L=8	2	
18	301170012	梳壳	Bobbin case	1	
19	301280017	滑块槽	Slider	1	
20	301280015	滑块导轨	Guide rail	1	
21	301590282	螺钉	Screw SM9/64"×40 L=7.5	2	
22	301330038	针杆	Needle bar	1	
23	301030291	针杆上衬套	Bearing support	1	
24	301240532	毛毡	Wool felt	1	
25	301140532	针杆线钩	Needle bar thread guide	1	
26	301080053	Dbx1 14#机针	Needle DB×1 14#	1	
27	301590403	螺钉	Rubber plug	1	
36	301130147	橡胶塞φ8.4	Rubber plug	1	
29	301590381	螺钉	Screw SM1/4"×40 L=4	1	
30	301130252	橡胶塞φ20.9	Rubber plug	1	
31	301140432	面部防油板	Oil stopper	1	
32		平垫圈3	Washer	1	
33	301590299	螺钉	Screw SM1/8"×44 L=4	1	
34	301590307	下轴限油芯	Oil wick	1	
35	301590294	限油螺钉	Screw SM3/16"×40 L=13	1	
36		7.948OTR旋梭	Hook 7.948TR	1	
37	301140520	旋梭定位销	Positioning finger	1	
38	301170012	梭芯	Bobbin	1	
39		缝包线	Thread	1	
40	301130185	油封φ7	Oil seal	2	
41	301130193	油封φ8	Oil seal	1	

-27-

序号 Ref.No.	物料号 Part.No.	名称 Name	Description	数量 Q'ty	备 注 Remark
35		油封	Oil seal	1	
36	301020249	抬压脚轴	Shaft	1	
37	301380040	抬压脚前曲柄	Crank	1	
38		驱动曲柄组件	Crank	1	
		驱动曲柄	Crank	1	
		螺钉	Screw SM11/64"×40 L=13	1	
		垫片	Washer	1	
		滚柱	Washer	1	
39		螺母	Screw SM11/64"×40 L=3	1	
40		鱼眼接头	Fish eye joint	1	
		螺钉	Screw M6×0.75 L=12	1	

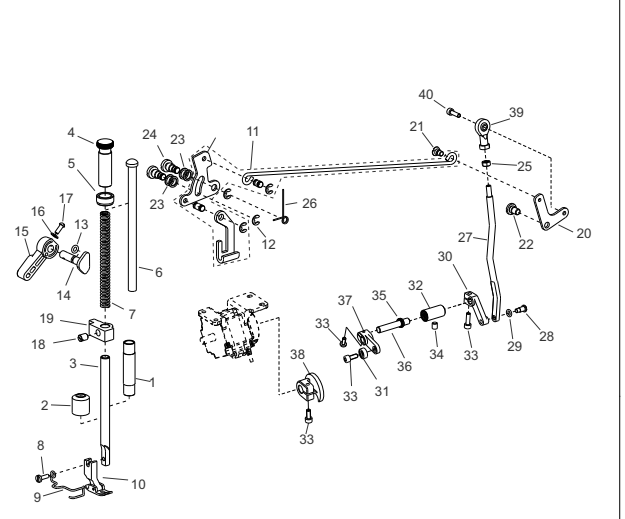
-30-

5. 送料分组件/Feed Mechanism Components



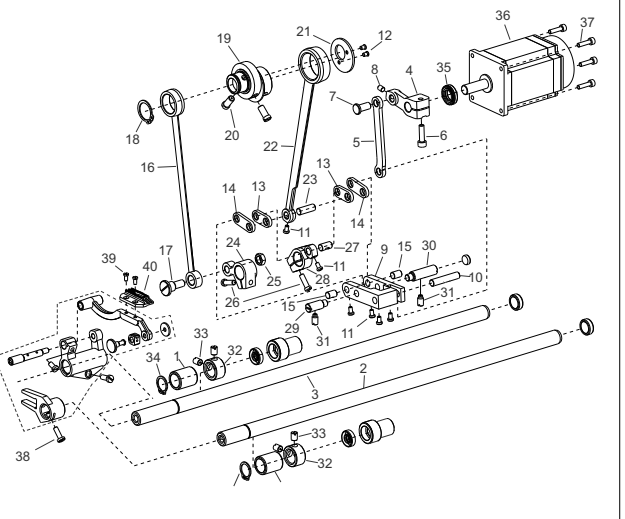
-33-

4. 压脚分组件/Hang Lifter Components



-28-

5. 送料分组件/Feed Mechanism Components



-31-

序号 Ref.No.	物料号 Part.No.	名称 Name	Description	数量 Q'ty	备 注 Remark
41	301590272	螺钉	Screw SM3/16"×28 L=15.5	1	
42	301160291	牙架组件	Feed bar ASM.	1	
		牙架座	Feed bar driving crank	1	
		牙架销	Pin	1	
		螺钉	Screw SM11/64"×40 L=8	1	
		牙架	Feed bar	1	
		抬牙滑块销	Pin	1	
		抬牙叉形曲柄	Lifting fork	1	
		抬牙滑块	Slider	1	
43	301030167	抬牙滑块垫圈	Washer	1	
44	301130198	抬牙送料中轴套	Bearing support	2	
45	301130094	油封φ22	Oil seal	2	
43		油封φ7	Oil seal	1	
		橡胶塞φ11.8	Rubber plug	1	

-34-

序号 Ref.No.	物料号 Part.No.	名称 Name	Description	数量 Q'ty	备 注 Remark
1	301030134	压杆衬套	Bearing support	1	
2	301130226	压杆防油套	Oil proof sleeve	1	
3	301020257	压杆	Pressure rod	1	
4	301590325	调压螺钉	Screw SM1/2"×28 L=41	1	
5	301600077	调压螺母	Nut SM1/2"×28 L=8	1	
6	301140514	调压导杆	Pressure rod	1	
7	301150161	调压簧	Spring	1	
8	301590298	螺钉	Screw SM9/64"×40 L=11	1	
9	301150076	护指架	Protect shelf	1	
10	301200077	压脚	Presser foot ASM.	1	
11	301600269	抬压脚前杠杆组件	Lifting lever link	1	
		抬压脚前杠杆	Lifting lever	1	
		压脚开板	Plate	1	
		抬压脚拉杆	Lifting lever connectin	1	
		前杠杆销	Pin	2	
		开口挡圈5	Snap ring	2	
		开口挡圈5	Snap ring	2	
12	301340027	O型圈	O-ring	1	
13	301130144	压脚扳手凸轮	Trigger cam	1	
14	301070077	压脚扳手	Trigger cam	1	
15	301380018	螺钉	Washer	1	
16	301610007	平垫圈	Washer	1	
17	301590286	螺钉	Screw SM9/64"×40 L=9.5	1	
18	301590295	螺钉	Screw SM1/4"×40 L=8	1	
19	301280014	压杆导架	Presser guide bar bracket	1	
20	301140689	抬压脚后杠杆	Lifting lever link	1	
21	301590293	螺钉	Screw SM3/16"×32 L=7	1	
22	301159292	螺钉	Screw SM15/64"×28 L=11	1	
23	301130140	橡胶垫圈φ8	Washer	1	
24	301590280	螺钉	Screw M8×1.0 L=15.5	2	
25	301590304	螺母	Screw M6×1.0 L=10	1	
26	301140696	前杠杆限位簧	Spring	1	
27	301150088	抬压脚后拉杆	Lifting lever connecting rod	1	
28	301590686	螺钉	Screw M5×1.0 L=13	1	
29		O型圈φ10.3	O-ring	1	
30	301310139	抬压脚后曲柄	Crank	1	
31	301240037	轴承	Bearing support	1	
32	301030264	抬压脚轴套	Screw M5×1.0 L=13	1	
33	301590381	螺钉	Screw SM15/64"×28 L=10.5	1	
34		油封	Oil seal	1	

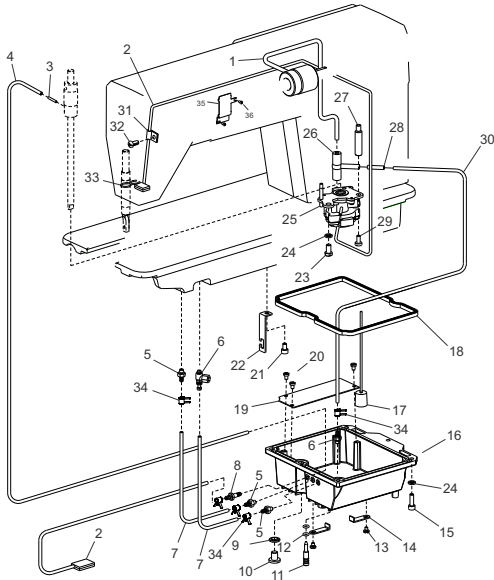
-29-

序号 Ref.No.	物料号 Part.No.	名称 Name	Description	数量 Q'ty	备 注 Remark
1	301030132	前轴套	Bearing support	2	
2	3010200276	抬牙连杆	Feed driving shaft	1	
3	3010200235	送料轴	Feed driving shaft	1	
4	3013100075	针距曲柄	rocker	1	
5	3013200039	针距连杆	Link	1	
6	3010900160	螺钉	Screw M5 L=18	1	
7	3010200096	针距电机曲柄销	Pin	1	
8	3010900324	螺钉	Screw M5 L=6	1	
9	3011601020	摆底座	Feed adjusting	1	
10	3011601040	摆动座销	Pin	1	
11	3010900371	螺钉	Screw SM9/64"×40 L=5	6	
12	3011601040	长螺钉	Screw SM9/64"×40 L=6	2	
13	3011404037	短连杆	Short link	2	
14		长连杆	Short link	2	
15		摆动板销	Pin	2	
16	3013200034	抬牙连杆	Connecting rod	1	
17	3010900285	螺钉	Screw SM9/32"×28 L=22	1	
18	3011501012	袖用弹性挡圈20	Snap ring	1	
19	3013800039	送料偏心齿轮	Feed eccentric cam	1	
20	3010900149	螺钉	Screw SM1/4"×40 L=13	2	
21	3011405444	送料偏心凸轮销	Thrust cover	1	
22	3013200028	送料连杆	Connecting rod	1	
23		送料连杆销	Pin	1	
24	3013100662	抬牙后曲柄	Lifting rocker	1	
25	3010900304	六角螺母	Nut SM1/4"×40 L=4.5	1	
26	3010900272	螺钉	Screw SM3/16"×28 L=15	1	
27		送料曲柄销	Feed rocker	1	
28	3013100059	送料曲柄	Pin	1	
29	3010500669	摆动板座右销	Pin	1	
30	3010500070	摆动板座右销	Pin	1	
31	3010900277	螺钉	Screw SM15/64"×28 L=10.5	2	
32	3010900057	抬牙送料挡圈销	Thrust collar	1	
33	3010900361	螺钉	Screw SM1/4"×28 L=8	4	
34	3011501012	袖用弹性挡圈15	Snap ring	1	
35		油封φ10	Oil seal	1	
36	3016400085	针距电机	Motor	1	
37	3010900323	螺钉	Screw M4 L=16	4	
38	3010900380	螺钉	Screw SM11/64"×40 L=10.5	1	
39	3011900063	送料牙	Feed dog	1	
40	3010900402	螺钉	Screw SM1/8"×44 L=6	2	

序号 Ref.No.	物料号 Part.No.	名称 Name	Description	数量 Q'ty	备 注 Remark
1	301020274	切线轴	Bearing support	1	
2	301030315	切线曲柄	Trimming crank	1	
3	301310144	螺钉	Screw M4×0.7 L=8.7	4	
4		长连杆	Knife shaft crack rod	1	
5		螺钉	Screw SM3/16"×28 L=14	1	
6		螺钉	Screw SM9/64"×40 L=6	3	
7		刀架压板	Knife holder	1	
8		大动刀	Round knife	1	
9		复位弹簧	Spring	1	
10		螺钉	Screw SM11/64"×40 L=5.5	3	
11		左刀架	Round knife bracket	1	
12		固定刀	Round knife	1	
13		电线衬套2孔	Rubber sleeve	1	
14		螺钉	Screw SM15/64"×28 L=10.5	1	
15		螺钉	Screw SM11/64"×40 L=6	1	
16		切线驱动曲柄B			
17	301310146	螺钉	Nut M4×0.7 L=3	2	
18		六角螺母	Round knife bracket	1	
19		右刀架	Knife shaft crack rod	1	
20		短连杆	Screw SM9/64"×40 L=7.5	1	
21		螺钉	Dispart	1	
22		分线片	Trimming shaft	1	
23		切线驱动曲柄组件	Trimming shaft	1	
24		切线驱动曲柄	Nut	1	
		六角螺母	Washer	1	
		垫圈	Roller bearing	1	
		滚珠	Screw	1	
		螺钉	Screw SM3/16"×28 L=14	5	
25		螺钉			
26		剪线电机	Motor	1	
27					
28					
29	301350030	大动刀	Round knife	1	
30		左刀架	Round knife bracket	1	
31		螺钉	Screw SM11/64"×40 L=6	1	
32	301350027	固定刀	Round knife	1	
33		螺钉	Screw SM9/64"×40 L=5.5	1	

-36-

8. 润滑分组件/Lubrication Components

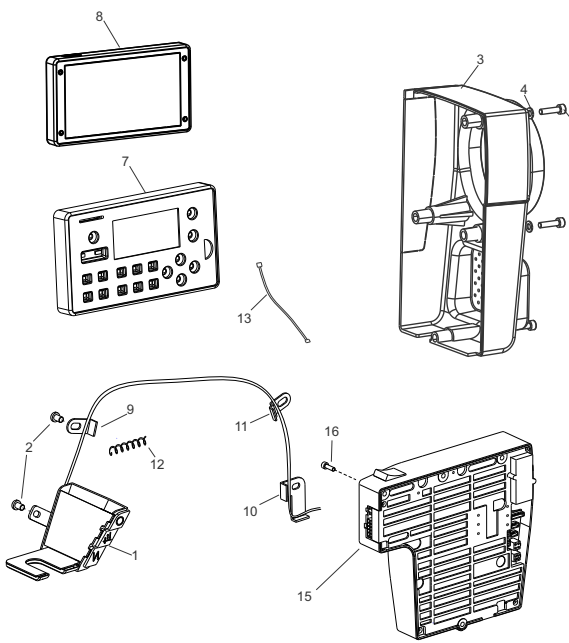


-39-

序号 Ref.No.	物料号 Part.No.	名称 Name	Description	数量 Q'ty	备 注 Remark
1	301030295	送布轴前套	Screw M4×0.7 L=12	1	
2		送布牙座		1	
3	301030294	送布轴后套		1	
4		螺钉	Screw M4×0.7 L=10 M4	2	
5	301020235	送布轴		1	
6	301310132	曲柄B		1	
7		螺钉	Screw M5×0.8 L=14	2	
8	301400101	螺母		2	
9	301590645	轴位螺钉		2	
10	301230062	轴承	Screw M5×0.8 L=12	1	
11	301250073	连杆		2	
12	301310133	曲柄A		1	
13		螺钉	Screw M5×0.8 L=12	2	
14	301140635	送布电机板		1	
15	301640053	送布电机		1	
16		螺钉		4	

-42-

7. 电控分组件/Drive-by-wire Components

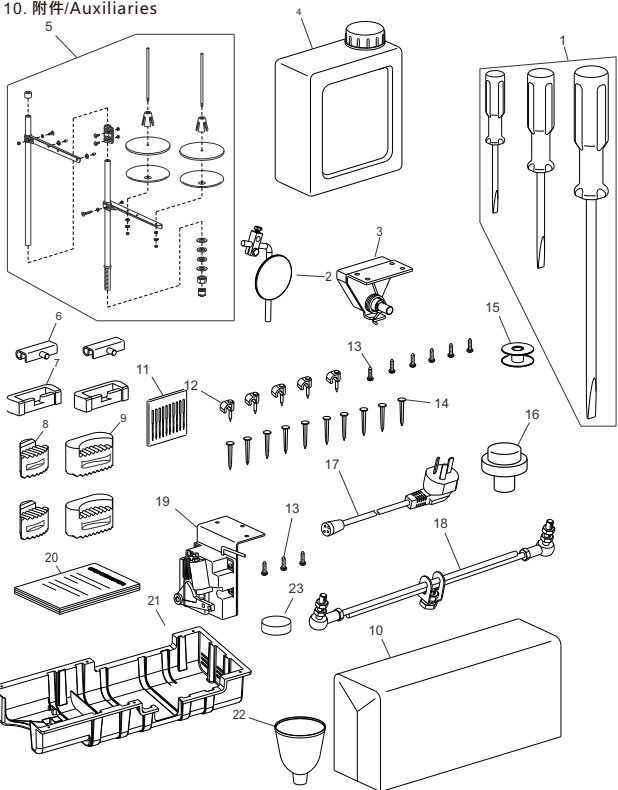


-37-

序号 Ref.No.	物料号 Part.No.	名称 Name	Description	数量 Q'ty	备 注 Remark
1	301270097	上轴供油管	Main shaft oil tube	1	
2	301260031	回油管部件	Oil tube	2	
3		油管接头	Oil pipe joint	1	
4		油管回油管	Oil tube	1	
5	301600063	油管接头	Oil pipe joint	4	
6	301060058	油量调节阀		1	
7		旋梭油管	Oil tube	2	
8	301270065	油管接头	Oil tube holder	1	
9		密封垫圈	Washer	1	
10		放油螺钉	Screw M8 L=10.5	1	
11		油量调节螺钉	Screw SM1/4"×40 L=21	1	
12		O形圈	O-ring	2	
13		螺钉	Screw SM9/64"×40 L=7.5	4	
14		油盘电线压板	Wire pressing plate	1	
15	301590124	螺钉	Screw M5×0.8 L=20	6	
16	301250069	小油盘	Oil reservoir	1	
17	301070104	油标部件	Oil pointer ASM.	1	
18	301130195	油盘密封垫	Gasket	1	
19	301140654	隔油板	Oil baffler	1	
20		螺钉	Screw SM9/64"×40 L=7.5	3	
21		螺钉	Screw SM3/16"×28 L=14	1	
22		油管支架	Oil pipe support	1	
23		螺钉	Screw SM15/64"×28 L=11	1	
24		弹簧垫圈	Washer	7	
25	301270073	油泵部件	Oil pump	1	
26	301130145	三通接头	Tee joint	1	
27	301590290	油标连接螺柱	Stud	1	
28		油管接头	Oil pipe joint	1	
29		螺钉	Screw SM11/64"×40 L=10	2	
30		旋梭供油管	Oil tube	2	
31	301250050	油管夹	Tubing buckle	1	
32		螺钉	Screw SM3/16"×28 L=6	1	
33	301150069	回油毡夹	Oil felt preser	1	
34	301250082	油管夹	Tubing buckle	6	
35		挡油板	Link	1	
36		螺钉	Screw SM11/64"×40 L=10	2	

-40-

10. 附件/Auxiliaries

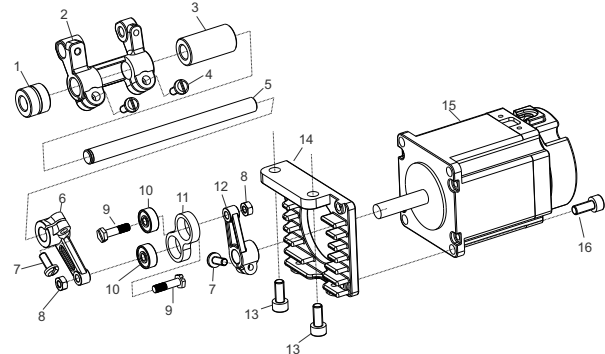


-43-

序号 Ref.No.	物料号 Part.No.	名称 Name	Description	数量 Q'ty	备 注 Remark
1	301570059	倒缝开关	Head light	1	
2		螺钉	Screw SM3/16"×28 L=6	2	
3	301070253	电机罩壳	Electric control panel	1	
4		平垫圈5	Washer	1	
5	301590316	螺钉	Screw M5 L=20	3	
6					
7	301670112	显示屏组件	Display ASM.	1	
8					
9		电线夹	Cable clip	1	
10		电线压板	Cable clip	1	
11	301140045	电线压板	Cable clip	1	
12		电线扎带	Ribbon	1	
13		信号连接线	Wire	1	
14					
15	301650185	双步进电控	Wire	1	
16		螺钉	Screw SM3/16"×28 L=18.5	3	

-38-

9. D9S步进送料送料组件/Feed Mechanism Components



-41-

序号 Ref.No.	物料号 Part.No.	名称 Name	Description	数量 Q'ty	备 注 Remark
1	15.03.00017	螺丝刀组件	Screw driver	1	
2	15.03.00015	膝靠组件	Knee pan ASM.	1	
3	15.03.00060	电子膝靠	Electronic knee control	1	
4	15.03.00019	油壶	Oil box	1	
5	15.03.00035	线架组件	Thread stand ASM.	1	
6	15.03.00014	机头连接钩	Head connecting hook	2	
7	15.03.00044	机头连接钩座	Head connecting hook socket	2	
8	15.03.00042	机头小防震块	Oil reservoir seat	2	
9	15.03.00041	机头大防震块	Oil reservoir cushion	2	
10	15.03.00031	机头罩	Head cover	1	
11	11.000.00033	机针DBx1 14#	Needle DBx1 14#	1	
12	15.03.00065	电线夹	Cable clip	6	
13	15.03.00113	木螺钉	Wood screw	4	
14	16.05.00026	鞋钉	Spikes	9	
15	11.000.00070	梭芯	Bobbin	2	
16	15.03.00121	机头支柱	Head pole	1	
17	18.01.04.00016	电源线	Power cord	1	
18	15.03.00028	踏板连杆	Pedal control rod ASM.	1	
19	18.01.05.00001	调速器	Speed controller	1	
20	15.03.00114	电控说明书	Electric control manual	1	
21	15.03.00058	油盘	Oil reservoir	1	
22	15.03.00066	漏斗	Funnel	1	
23	15.03.00122	磁铁	Magnet	1	

-44-

-45-

序号 Ref.No.	物料号 Part.No.	名称 Name	Description	数量 Q'ty	备 注 Remark
1	301570059	倒缝开关	Head light	1	
2		螺钉	Screw SM3/16"×28 L=6	2	
3	301070253	电机罩壳	Electric control panel	1	
4		平垫圈5	Washer	1	
5	301590316	螺钉	Screw M5 L=20	3	
6					
7	301670112	显示屏组件	Display ASM.	1	
8					
9		电线夹	Cable clip	1	
10		电线压板	Cable clip	1	
11	301140045	电线压板	Cable clip	1	
12		电线扎带	Ribbon	1	
13		信号连接线	Wire	1	
14					
15	301650185	双步进电控	Wire	1	
16		螺钉	Screw SM3/16"×28 L=18.5	3	

-48-

序号 Ref.No.	物料号 Part.No.	名称 Name	Description	数量 Q'ty	备 注 Remark
1	15.03.00017	螺丝刀组件	Screw driver	1	
2	15.03.00015	膝靠组件	Knee pan ASM.	1	
3	15.03.00060	电子膝靠	Electronic knee control	1	
4	15.03.00019	油壶	Oil box	1	
5	15.03.00035	线架组件	Thread stand ASM.	1	
6	15.03.00014	机头连接钩	Head connecting hook	2	
7	15.03.00044	机头连接钩座	Head connecting hook socket	2	
8	15.03.00042	机头小防震块	Oil reservoir seat	2	
9	15.03.00041	机头大防震块	Oil reservoir cushion	2	
10	15.03.00031	机头罩	Head cover	1	
11	11.000.00033	机针DBx1 14#	Needle DBx1 14#	1	
12	15.03.00065	电线夹	Cable clip	6	
13	15.03.00113	木螺钉	Wood screw	4	
14	16.05.00026	鞋钉	Spikes	9	
15	11.000.00070	梭芯	Bobbin	2	
16	15.03.00121	机头支柱	Head pole	1	
17	18.01.04.00016	电源线	Power cord	1	
18	15.03.00028	踏板连杆	Pedal control rod ASM.	1	
19	18.01.05.00001	调速器	Speed controller	1	
20	15.03.00114	电控说明书	Electric control manual	1	
21	15.03.00058	油盘	Oil reservoir	1	
22	15.03.00066	漏斗	Funnel	1	
23	15.03.00122	磁铁	Magnet	1	

-51-

-46-

序号 Ref.No.	物料号 Part.No.	名称 Name	Description	数量 Q'ty	备 注 Remark
1	301570059	倒缝开关	Head light	1	
2		螺钉	Screw SM3/16"×28 L=6	2	
3	301070253	电机罩壳	Electric control panel	1	
4		平垫圈5	Washer	1	
5	301590316	螺钉	Screw M5 L=20	3	
6					
7	301670112	显示屏组件	Display ASM.	1	
8					
9		电线夹	Cable clip	1	
10		电线压板	Cable clip	1	
11	301140045	电线压板	Cable clip	1	
12		电线扎带	Ribbon	1	
13		信号连接线	Wire	1	
14					
15	301650185	双步进电控	Wire	1	
16		螺钉	Screw SM3/16"×28 L=18.5	3	

-49-

序号 Ref.No.	物料号 Part.No.	名称 Name	Description	数量 Q'ty	备 注 Remark
1	15.03.00017	螺丝刀组件	Screw driver	1	
2	15.03.00015	膝靠组件	Knee pan ASM.	1	
3	15.03.00060	电子膝靠	Electronic knee control	1	
4	15.03.00019	油壶	Oil box	1	
5	15.03.00035	线架组件	Thread stand ASM.	1	
6	15.03.00014	机头连接钩	Head connecting hook	2	
7	15.03.00044	机头连接钩座	Head connecting hook socket	2	
8	15.03.00042	机头小防震块	Oil reservoir seat	2	
9	15.03.00041	机头大防震块	Oil reservoir cushion	2	
10	15.03.00031	机头罩	Head cover	1	
11	11.000.00033	机针DBx1 14#	Needle DBx1 14#	1	
12	15.03.00065	电线夹	Cable clip	6	
13	15.03.00113	木螺钉	Wood screw	4	
14	16.05.00026	鞋钉	Spikes	9	
15	11.000.00070	梭芯	Bobbin	2	
16	15.03.00121	机头支柱	Head pole	1	
17	18.01.04.00016	电源线	Power cord	1	
18	15.03.00028	踏板连杆	Pedal control rod ASM.	1	
19	18.01.05.00001	调速器	Speed controller	1	
20	15.03.00114	电控说明书	Electric control manual	1	
21	15.03.00058	油盘	Oil reservoir	1	
22	15.03.00066	漏斗	Funnel	1	
23	15.03.00122	磁铁	Magnet	1	

-52-

-47-

序号 Ref.No.	物料号 Part.No.	名称 Name	Description	数量 Q'ty	备 注 Remark
1	301570059	倒缝开关	Head light	1	
2		螺钉	Screw SM3/16"×28 L=6	2	
3	301070253	电机罩壳	Electric control panel	1	
4		平垫圈5	Washer	1	
5	301590316	螺钉	Screw M5 L=20	3	
6					
7	301670112	显示屏组件	Display ASM.	1	
8					
9		电线夹	Cable clip	1	
10		电线压板	Cable clip	1	
11	301140045	电线压板	Cable clip	1	
12		电线扎带	Ribbon	1	
13		信号连接线	Wire	1	
14					
15	301650185	双步进电控	Wire	1	
16		螺钉	Screw SM3/16"×28 L=18.5		