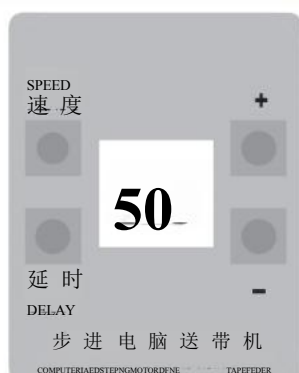


## Display panel function operation instructions



## Operation instructions

- 1、After the controller is powered up, the display panel displays the feeding speed is "50".
- 2、Press "+" function keys to increase the speed. Press "-" function keys to decrease the speed.
- 3、The speed adjustable range is "1--99", corresponding motor speed is 0---800r/min.



## Operation instructions:

- 1、Press the "Delay" to enter the delay stop function settings.  
The default minimum delay time is displayed as "0.0"
- 2、Press "+"function keys to increase the delay time. Press "-"function keys to reduce the delay time.
- 3、The adjustable delay time range is "0.0---9.9" seconds.

## TFS/TFU-15 系列零件图

PARTS LIST FOR TFS/TFU-15 SERIES

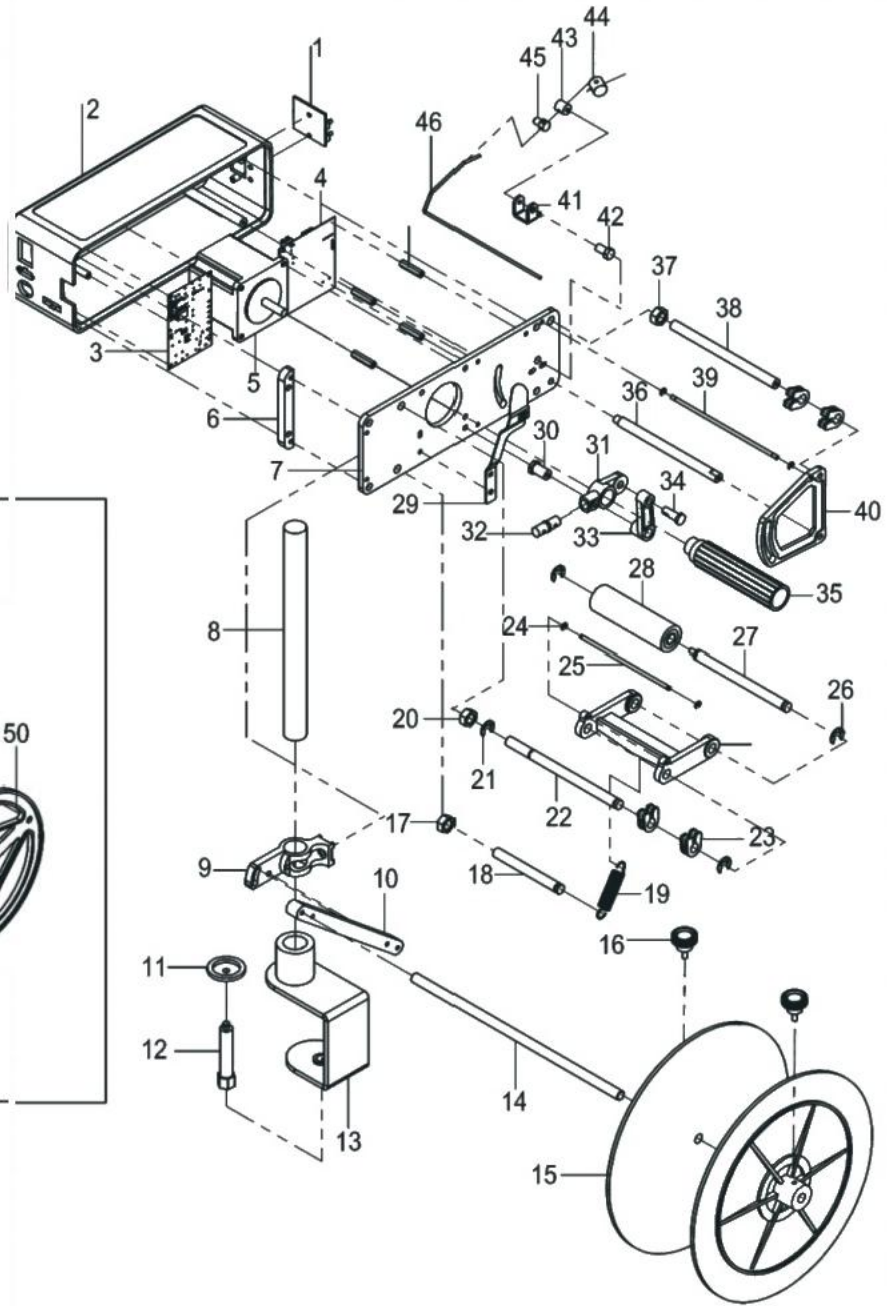
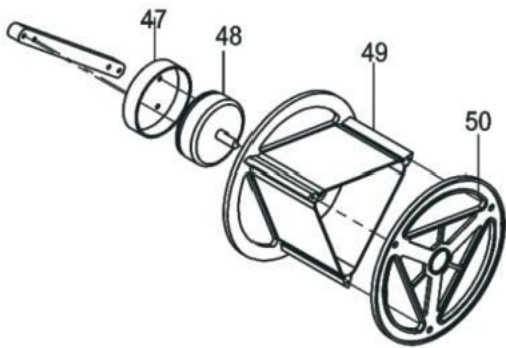
AUFLISTUNG DER TEILE DER SERIES TFS/TFU-15

LISTE DES PIÉCES DES SERIES TFS/TFU-15

LISTA DE RECAMBIOS DE LAS SERIES TFS/TFU-15

### NO.TFS/TFU-15

#### NO.UT



### NO.TFS/TFU-35

