



IRONING TABLE INSTALLATION MANUAL



广东省肇庆市高要区利兴隆机电设备有限公司

GUANDONG ZHAOQING GAOYAO LI XING LONG ELECTRICAL EQUIPMENT CO.,LTD.

Add: Boxi Industry Park, Liantang Town, Gaoyao Dist. zhaoqing Guangdong, China

Service hotline: 008613902367984(MobileWhatsapp/Wechat)

本说明书内容可能有更改，图文所规格配备数据仅供参考，
欲了解详情欢迎联系我们。内容最终解释权归本公司所有。

Ironing Table Series



Flat ironing table

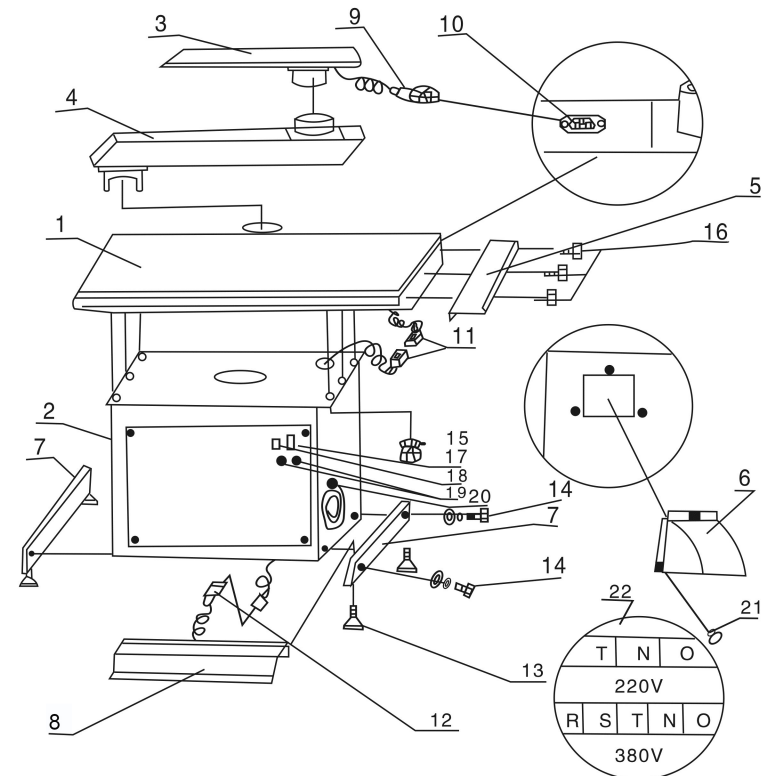


single arm ironing table



Double arm ironing table

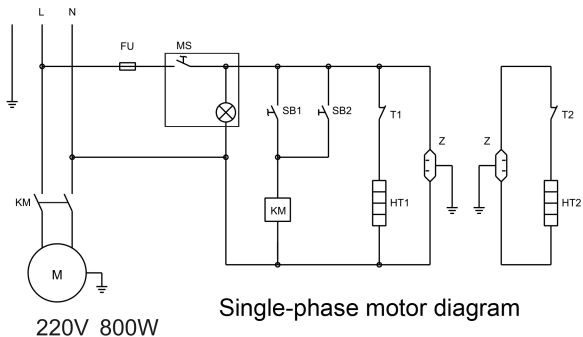
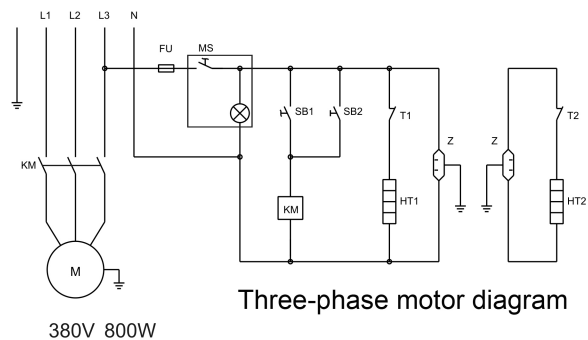
Assembly Diagram of ironing table series



1	Table accessories	8	Foot switch accessories	15	M8-M10 screw
2	Base accessories	9	Iron arm power socket	16	M6-M8 screw
3	Arm accessories	10	Ironing table heating	17	Switch
4	Joint arm accessories	11	Ironing table heating line	18	Hand switch
5	Table for Iron	12	Foot switch line	19	Fuse holder
6	Wind cover	13	Adjust screw base	20	power connection
7	Foot of ironing table	14	M8X20 screw	21	M5X16 screw
22	There are 5 lines of 380v, respectively: R.S.T.N.O, and the colors are red, yellow, blue, green and black N is the null line and O is the ground line. There are 3 lines of 220v, respectively: R.N.O, and the colors are red, blue and green. N is the null line and O is the ground line.				

Electrical circuit schematic diagram of ironing table

一、Electrical diagram of ironing table



- A: Ironing table electrical drawing
B: Arm electrical drawing
C: Ac contactor FR: thermorelay M: Motor MS: power switch
Fu1: Fuse of heating Fu2: Fuse of Ac contractor
P: Foot switch SB: Hand switch T1: Table temperature controller T2: Arm temperature controller
HT1: Table heating pipe HT2: Arm heating pip Z: Arm power socket

Vacuum drying ironing table instructions

Ironing table are suitable for ironing silk,flock,suit,ladies' swear such as dresses, skirts and others garments. with the feature of Funnel type design,low noise and good effect in moisture extraction, our ironing table is becoming popular.
Table and arm can be set up heating,which will reduce the water of the steam in the clothes and improve the quality of the garment.With the foot and hand switch and swing arm design,our ironing table are more easy to handle.

All stainless steel ironing table data

Model	Flat ironing table		single arm ironing table		Double arm ironing table	
	SH-1200	SH-1500	SH-1201	SH-1501	SH-1202	SH-1202
Table size mm	1250x800	1500x800	1250x800	1500x800	1250x800	1500x800
Voltage V	220	380	220	380	220	380
Motor capacity W	750	750	750	750	750	750
Heating capacity KW	1	1	1	1	1	1
Body size mm	1410x920x990	1650x920x990	1410x920x990	1650x920x990	1410x920x990	1650x920x990
Satinless steel table,iron arm and iron basement are available						

Iron material ironing table

Model	Flat ironing table		single arm ironing table		Double arm ironing table	
	SH-1200	SH-1500	SH-1201	SH-1501	SH-1202	SH-1202
Table size mm	1250x800	1500x800	1250x800	1500x800	1250x800	1500x800
Voltage V	220	380	220	380	220	380
Motor capacity W	750	750	750	750	750	750
Heating capacity KW	1	1	1	1	1	1
Body size mm	1410x920x990	1650x920x990	1410x920x990	1650x920x990	1410x920x990	1650x920x990

ootings
(380V)

Installation

- Place the table in the center of the base and use the M8X20 screws to hold the table and base together.
- Conect the ironing table to rated voltage power supply and connect the ground wirer
- Insert the short push rod into the hole in the countertop. Lock it with the cotter pin, and install the iron rack, and install the iron rack.
- Install the middle seat on the rocker arm into the table hole, and install the ironing arm on the arm.
- Adjust the position of the push rod and fork so that the swing arm is parallel to the table.When the ironing table is running, the swing arm rotates 10-15 degrees.and running at suction, then fix the u-shaped interface.
- Rotate swing arm, check swing arm and table suction conversion
- Rotate swing arm, check swing arm and table suction conversion

Usage

- Connect the power supply, turn on the power switch of the base, and the indicator light indicates that the power supply has been connected.Turn on the switch of thermostat ,the table and swing arm start to heat up
- Start the foot switch to check the air suction on the table. If there is little air suction, then the motor reverses. You can change the rotation direction of the motor by changing the connection sequence of the power wire
- When use the heating of swing arm electrically, plug the swing arm into the back socket.Adjust the temperature control switch that adjust the temperature.
- When everything is all right, you can start the switch and use the foot switch to start the motor running, but please step on the foot board gently
- After work, all power switches should be turned off and the power cut off.Clean tablecloths and plastics regularly.

Maintenance and precautions

- The air wheel of suction fan is adjusted by balance . If it is not necessary, please do not remove it.
- Clean the dust, fiber and residue of the motor and wind wheel regularly, ensure the wind blade and ventilation guide rail are unobstructed.
- Dust, fiber, steam and high temperatures can contaminate or age the pads on the table and rocker arms, which can affect ventilation and should be replaced regularly.
- Grease the arm passes, ironing arm and Place of rotation at regular intervals.
- Swing arm equipped with heating pipe, if not used for a long time, can be removed from the power
- The power must be turned off before the operator finishes using it or leaves
- In order to keep the table flat and ironing quality, do not knock on the table or pile heavy objects.

General obstacle removal methods

Fault	Reason	Trouble-shoot
Motor do not work	1. Electrical circuit fault	Check and eliminate
	2. Fuse fault	Change
	3. Bad connect of foot and hand switch	Adjust or Change
	4. Contactor fault	Eliminate or Change
	5. Thermorelay	Eliminate or Change
Suction become weak	1. Motor rotate converse	Exchange any two wires
	2. Can not open the ventilation door	Adjust the push rod
Table heating trouble	1. Electrical circuit fault	Check and eliminate
	2. Temperature controller fault	Change
	3. The heating pipe is burnt out	:Check and eliminate
Iron heating trouble	1. The plug loose	Check and eliminate
	2. Temperature controller fault	Eliminate or Change
	3. The heating pipe is burnt out	Check and eliminate