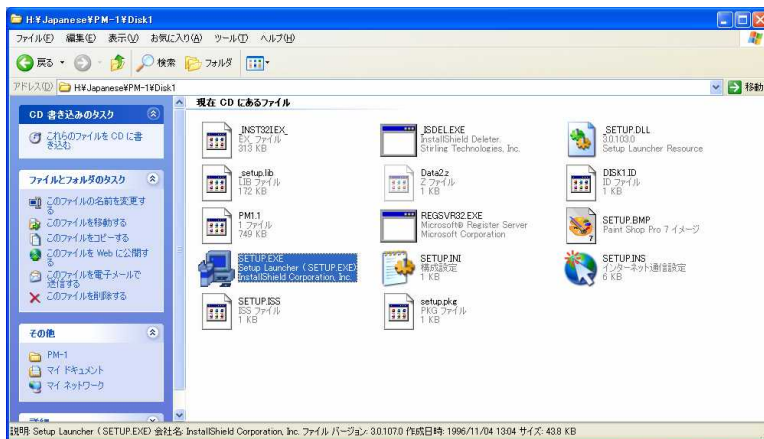


# How to set up PM-1

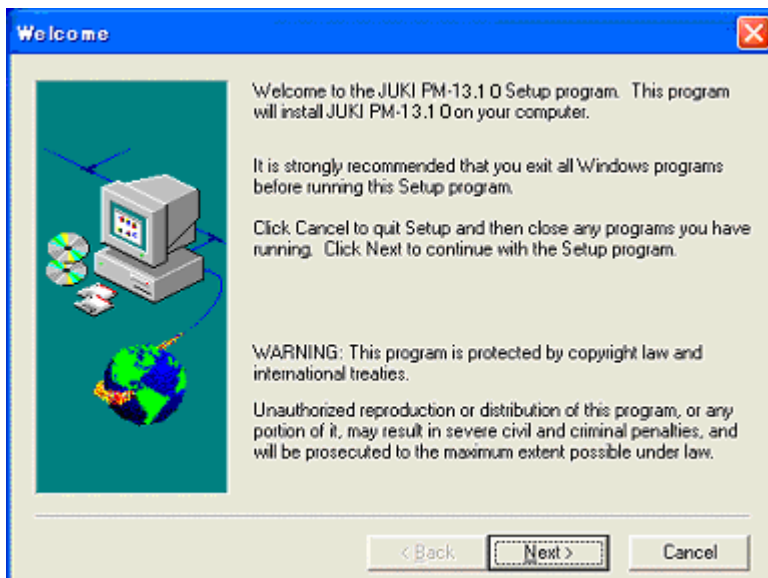
JUKI CORPORATION

## Installation of PM-1

1. Turn on the computer.  
\* User must log in as 'administrator.'
2. Insert the Installation CD-ROM to the CD drive.
3. From 'My Computer,' browse through CD drive to locate 'SETUP.EXE'
4. (For English version) English¥PM-1¥Disk1  
(For Japanese version) Japanese¥PM-1¥Disk1



5. Double click on 'SETUP.EXE' will start the installation wizard. Follow through the guidance.



6. Installation will be completed as you pass through the last part of the wizard.

7. From 'START' button, go to Program>JUKI PM-1 to start PM-1 software.

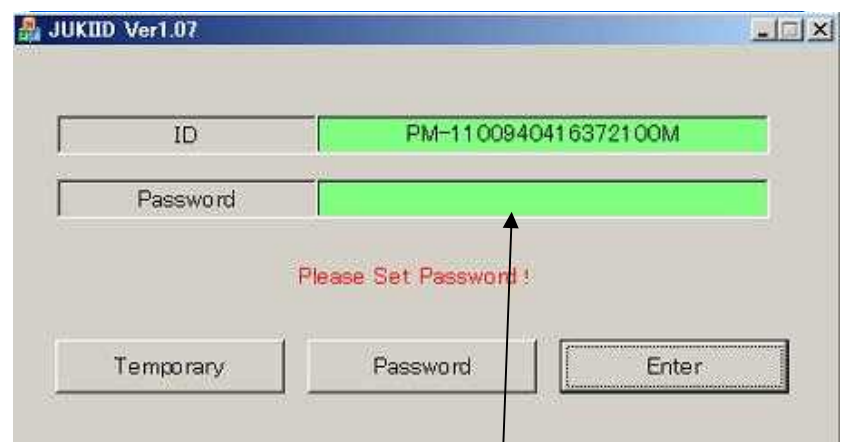
When PM-1 is started for the first time, the following dialog box pops up.



8. Make a note of the "ID" shown in the dialog, (PM-1100940416372100M). Click on 'Enter' to get out.

9. Fill out the ID along with other required information in "USER ID REGISTER-sheet.xls" put in CD, and then provide these information for the JUKI dealers or distributors that your have purchased the PM-1 software, you will be assigned " Password " to release protections.

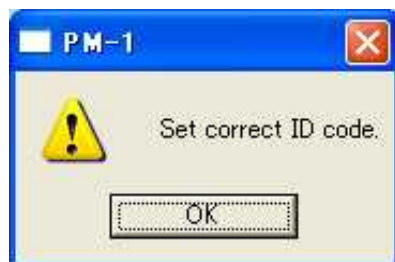
10. Once you obtain a "Password", start PM-1, the password dialog pops up. Click on "Password" to enter the code. Click on 'Enter' to get out.



Click here, and enter Password which you obtain

11. PM-1 will start once the "Password" provided is legitimate, and the password dialog will not be displayed from next time.

If the "Password" is not recognized as legitimate, an error message (fig.) pops up and PM-1 will not start. In this case, after clicking 'OK', start PM-1 again, and enter the right "Password".



1. JUKI holds the copyrights of this product.
2. Utilization or reproduction of this Instruction Manual and software of this product in whole or in part without prior permission in writing of JUKI Corporation is prohibited.
3. This product is protected under the Japan Copyright Act and International Copyright Conventions.
4. In principle, the user is requested to purchase one set of this product for one unit of personal computer.
5. Please understand that JUKI assumes no responsibility for any effect exerted by results arising out of the use of this product.
6. The design and specifications described in this Instruction Manual are subject to change without notice.

\*Windows is a registered trademark of Microsoft Corporation, U.S.A.

Copyright c 2010 JUKI Corporation. All rights reserved.