

Ink jet plotter

--Operating manual



Foreword

Thank you for choosing an inkjet plotter. Inkjet plotter using a Hewlett-Packard CAD Special nozzle technology, with high speed and precision, stable characteristics, up to 600DPI resolution; Inkjet plotter supporting the "Drawing Management Center" software that can draw HPGL format files from a variety of software, such as AutoCAD, SolidWorks, etc., as for ink jet plotter output drawing commands, "drawing management center" will all tasks related to information accurate dynamic real-time displayed, advocating "what you see."

Before you use this inkjet plotter, please read the manual carefully, to ensure that you can efficiently. Successfully complete the machine all functions work operation, such as an unidentified place, please contact our service provider, to seek further help.

(this manual are subject to change without prior notice)

Catalogue

Chapter one Safety Tips

Chapter II Use matters needing attention

2.1 the use of the machine environment

2.2 other considerations

Chapter III Brief introduction

3.1 the basic introduction

3.2 parts and their functions

Chapter fourth Installation

4.1 the installation of the machine

4.2 the connection

4.3 the paper

Chapter five Inkjet plotter Center Software Description

Chapter one Safety Tips

Please read carefully before using this ink jet plotter all of the following guidelines:

- *Ink jet plotter on level ground, to avoid unnecessary failure caused by not smooth plane.

- *Please use the rated voltage (220V), not to inkjet plotter is connected to the accessory no rated voltage, power supply instability will lead to performance degradation plotter, plotter or even destroy the power board.

- *Power plug should be plugged into the power strip with a ground wire, such as the machine is not grounded, because static electricity discharge caused by excessive accumulation of serious damage to the plotter.

- *Avoid inkjet plotter with maximum power of frequent startup device connected to the same power outlet, such as air conditioning and other equipment, if in parallel on the same power outlet, make sure that these devices should not exceed the power required to power socket can withstand current.

- *Do not use damaged or worn on the power line.
- * Don't put inside the liquid drip into the plotter, otherwise it will cause the components from the damage of circuit board short circuit of the machine.
- *Don't try to lubricating the moving parts of the machine.
- *Unless the machine instructions are on the "use manual", otherwise please don't repair or remove the plotter.

Chapter II Use matters needing attention

Although you are very familiar with inkjet plotter, but before operating this machine also please read the following precautions:

2.1 the use of the machine environment

Plotter work and storage temperature range is: 15 to 35 degrees Celsius, not in the glare, radiation or heat storage or use of this machine. Plotter work at room temperature humidity range is: 20% - 80%, do not use in wet or humid and dusty places plotter, because once the moisture condensation inside the machine, dust entering the plotter and cause short circuit or poor contact and seriously affect the plotter to avoid performance in strong electromagnetic interference or put something magnetic beside the plotter

2.2 other considerations

*Before access or disconnect the power supply, make sure the machine is in the off state.

*Avoid unnecessary frequent on and off the machine, so as not to affect the performance of electronic components.

*In the process of drawing, don't put the body near the plotter, don't put your hands on track

*If need to access or adjust the transmission signal, please confirm the power of the computer and plotter switches have been closed.

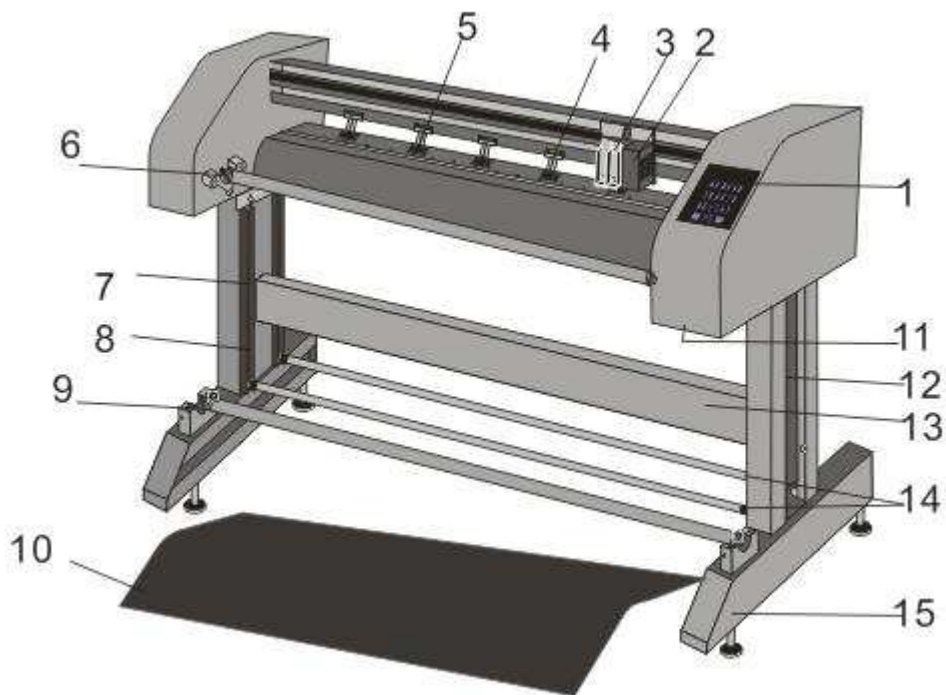
Chapter III Brief introduction

Inkjet plotter resolution up to 300-300, at the same time drawing speed per hour up to 50-200 square meters, more than 20% higher than that of other inkjet plotter per hour - 50% of the drawing production, and can accurately automatically judge shows status information using HP original HP51645 nozzle, free maintenance, high resolution, low use cost

3.1 the basic performance indicators

Model	A200-2	A220-2	A240-2	A240-4
Maximum width on paper	172cm	190cm	220cm	210cm
The biggest drawing width	165cm	185cm	200cm	190cm
The average speed of drawing	80 SQ MTS/HR	80 SQ MTS/HR	80SQ MTS/HR	160SQ MTS/HR
Resolution	300-600 DPI			
The ink head type	HP51645			
Quantity of nozzles	2	2	2	4
Ink Type	Add 2-8 times repeatable			
The biggest paper weight	100 KG	100 KG	100KG	100 KG
The type of paper	30g-300g			
Port	USB2.0			
The drawing language	HPGL			
Power/voltage	220V AC			
Frequency	50HZ-60HZ			
Net weight	80K G	100KG	100KG	135KG
Drive mode	Intelligent servo			

3.2 parts and their functions:



- | | | |
|-----------------------------------|-------------------------------|-------------------------|
| (1) control panel | (2) The cartridge group | (3) HP ink box |
| (4) pinch roller | (5) Paper roll grinding wheel | (6) Paper roll |
| (7) Began to collect paper sensor | | (8) Stop paper sensor |
| (9) Feed roller | (10) protective cover | (11) power switch |
| (12) The side panel | (13) The beam | (14) Pressure paper rod |
| (15) The base | | |

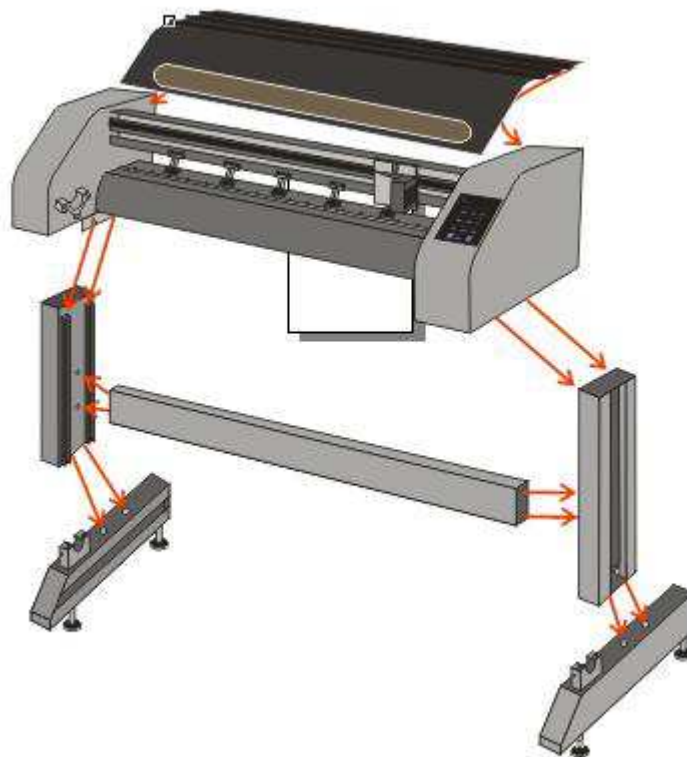
Chapter fourth Installation

4.1 the installation of the machine

4.4.1 check the goods before installation

This machine consists of the following items: host, support group (including the left and right sides, around the base, beam), the power cord, USB cable, HP cartridges, paper feeding roller, the pressure rod, screw, hex socket wrench.

Please refer to the following assembly drawing installation:



4.1.2 installation host and support

With reference to the above group around the beam with socket head cap screw and bracket connected, and then the host on the bracket, at the same time take the host and the bracket in inner hexagon spanner, again according to the logo connecting line the good joint.

4.2 the connection

4.2.1 Please make sure the machine power switch is closed, and ensure the power supply voltage of 110-220 - v, connect the power supply..

4.2.2 Connect the USB interface to PC, read in inkjet plotter center software, installed driver, prepare the way for drawing.

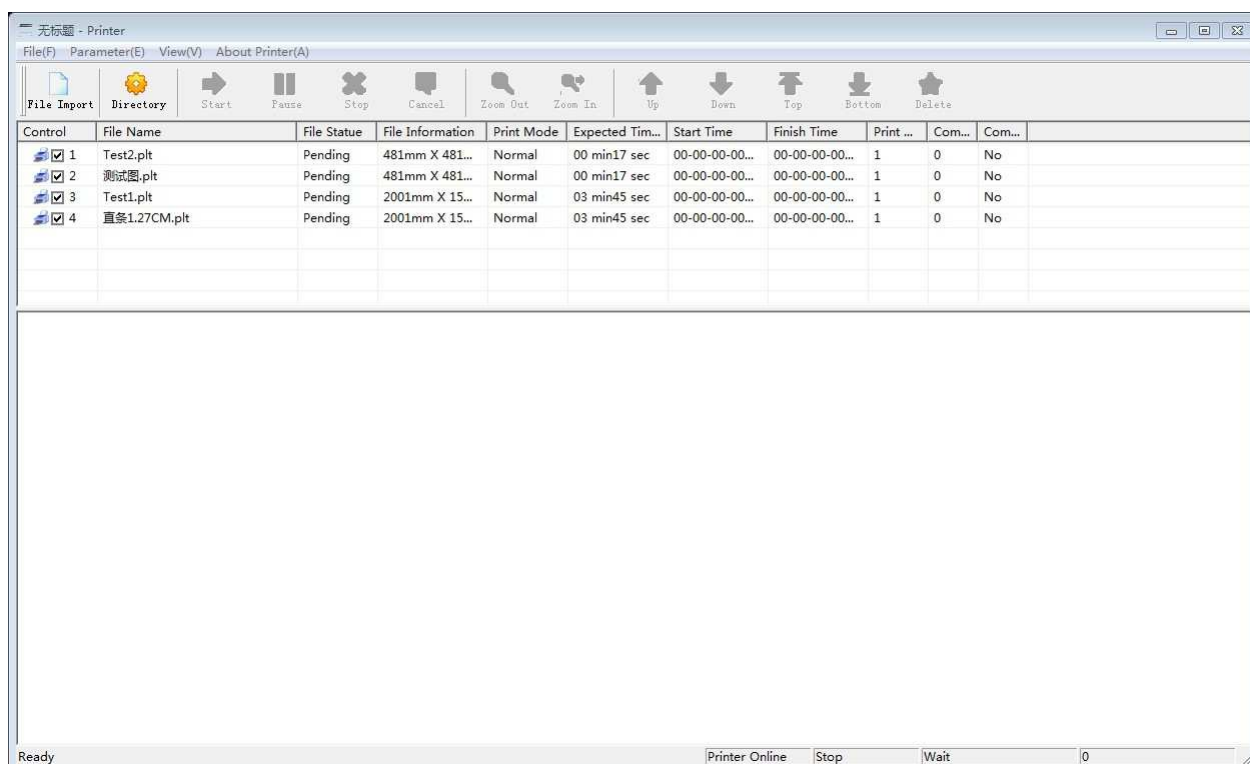
4.3 Paper was

After installation of the machine, our paper work can be carried out, in paper cones fixed drum paper (note that the direction of the paper, the pressure lever on the paper after paper rod guide groove, the paper from to the pressure after the paper rod under beam, then move up to the machine after the above, through the pressure roller, to accept the location of the drum of paper, take up the paper, and then use tape from the middle to put the paper on the paper roller with both sides, laying a good pressure bar paper paper; Open the check, press down the button on the control panel, can guarantee to deliver the paper stem paper paper down rod, at the same time will pressure paper rod into paper rod guide groove pin.

Chapter five Instructions on the use of the ink jet plotter center software

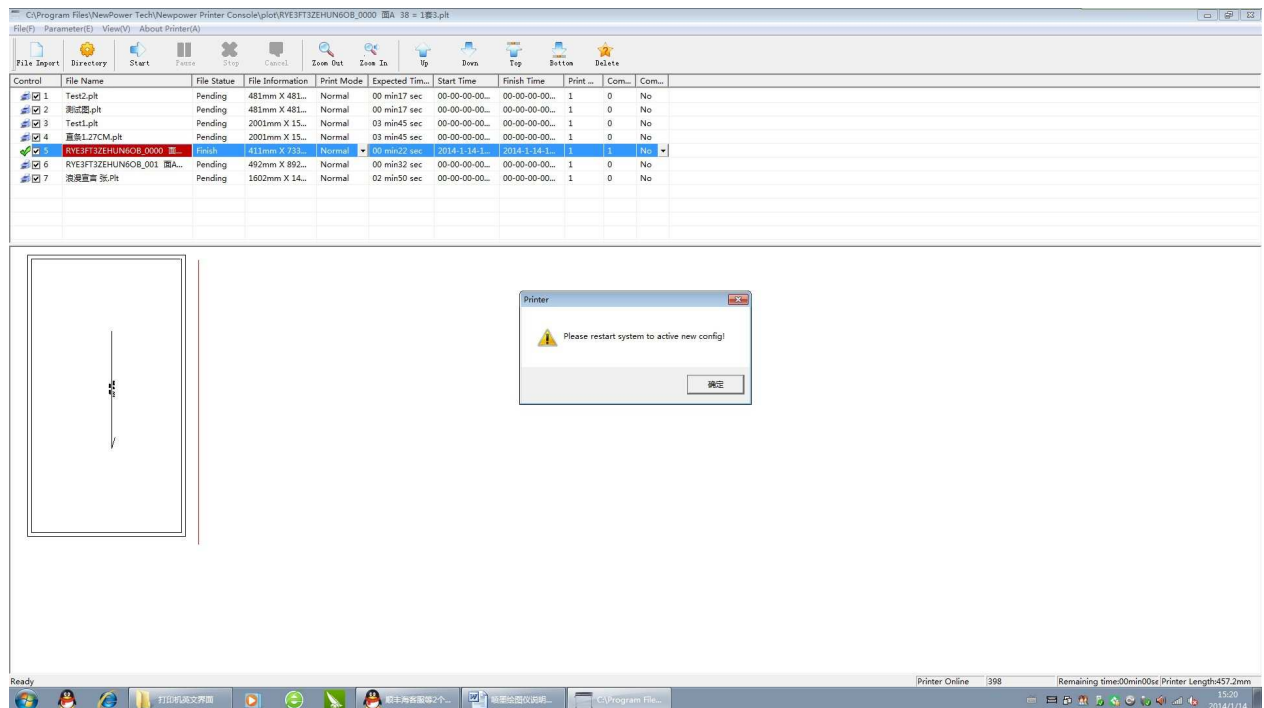
Inkjet plotter drawing center software, can draw from a variety of software *. PLT file, such as love, OPTITEX. G. Rick, etc., and can accurately and automatically judgment and display will be drawing time; Has the intelligence and automation of the ink head cleaning technology. About the software instructions please read the following instructions:

1、 Open the software will appear below the main interface, menu bar, toolbar, workspace, the status bar (figure 1)。



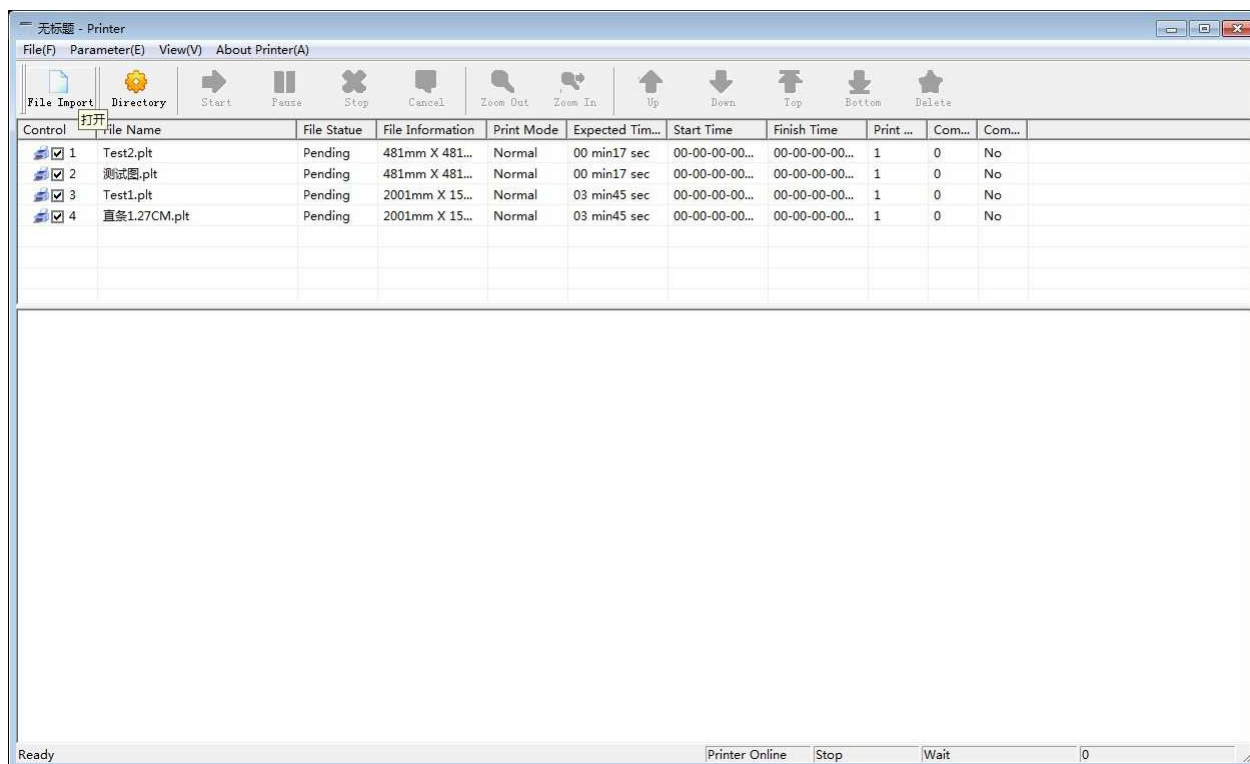
(figure 1)

2、 Language function switch: the software supports. The English version, in the language selection in the parameter Settings are free to switch (figure 2)。

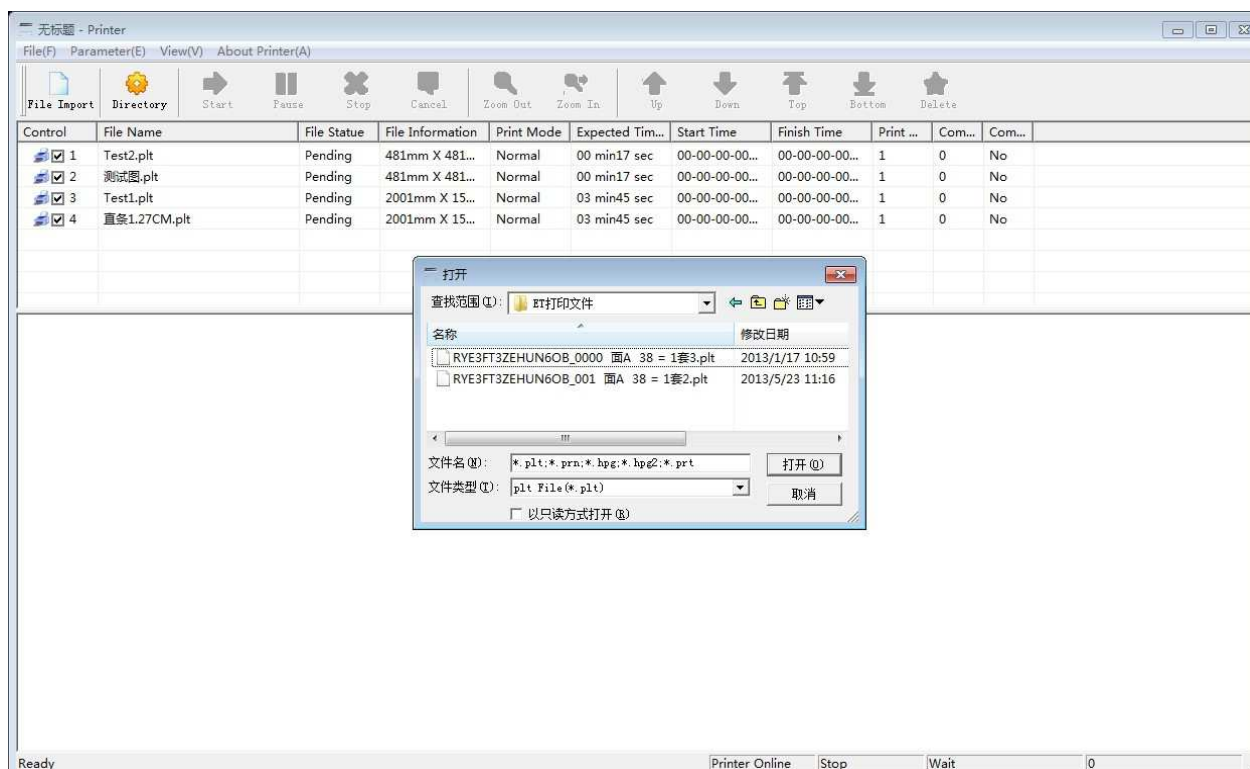


(figure 2)

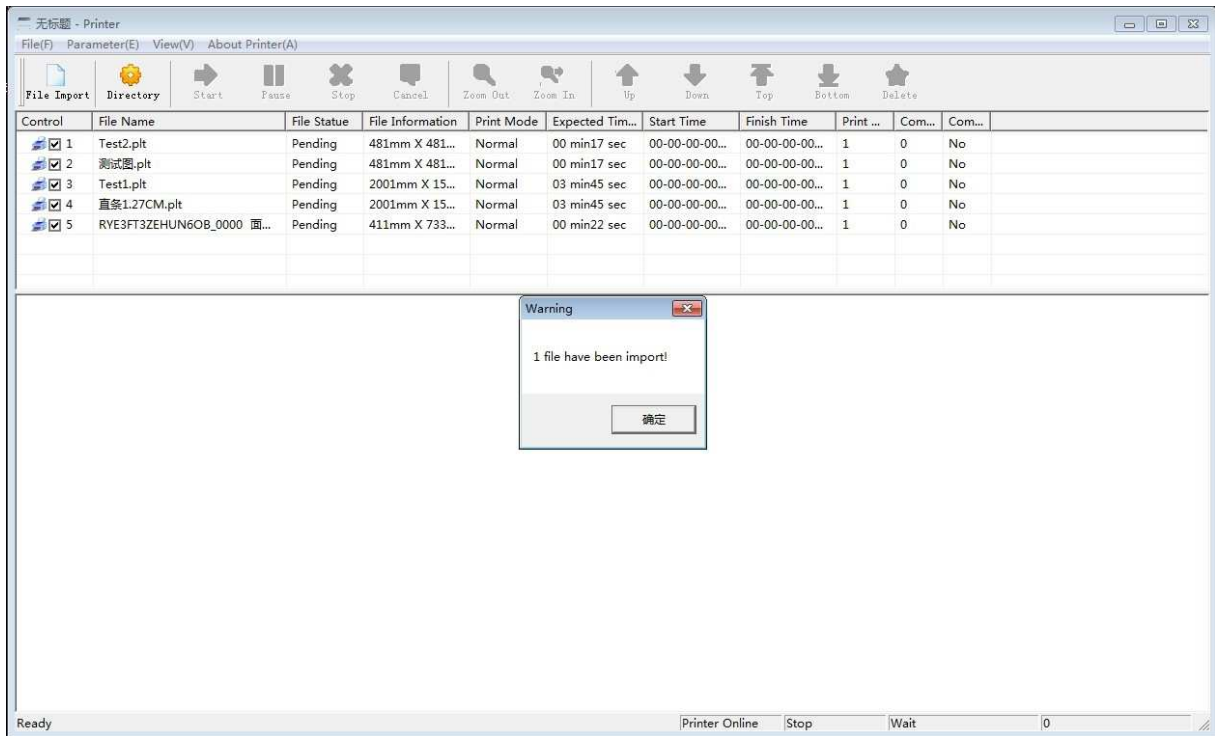
3、 File to import, click the file to import files or toolbar (figure 3), choose to print *. Pit file, click ok (figure 4. Figure 5), will see in print control directory will print file for detailed information, and tool column of file processing tools, such as start print. Print pause. Image zoom in and out. Print in advance and buy later, etc.



(figure 3)

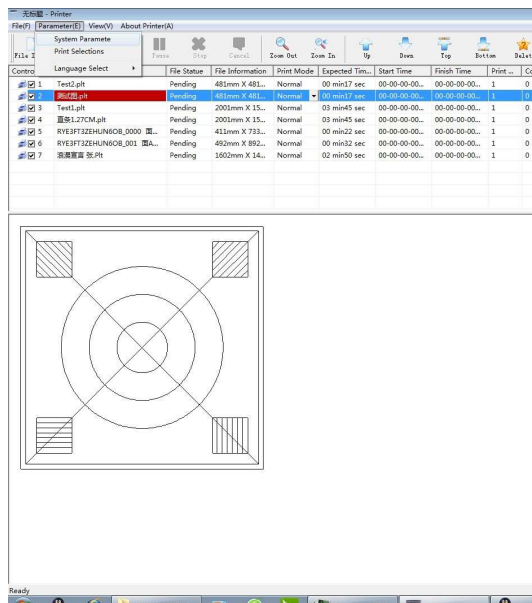


(figure 4)

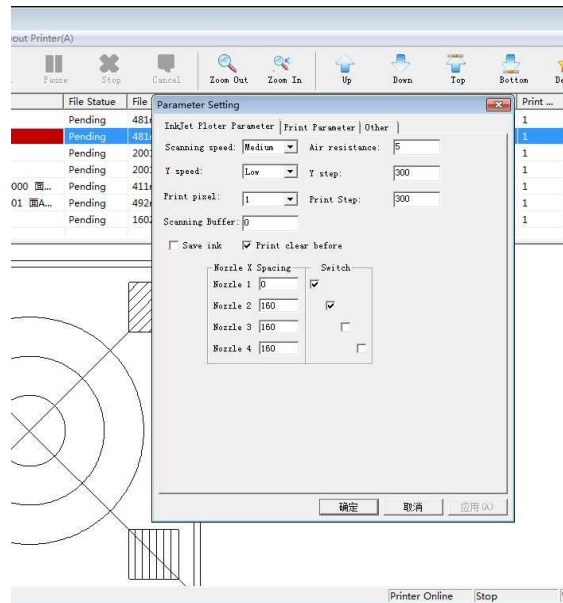


(figure 5)

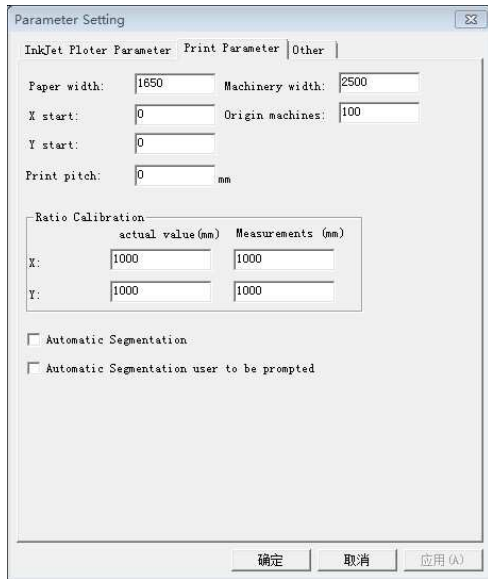
4、Parameter Settings: the directory in the preferences in the menu bar user preferences in parameter Settings. The system parameter Settings, and other three options, according to the file will print to parameter setting, can print documents (figure 6、7、8、9)。



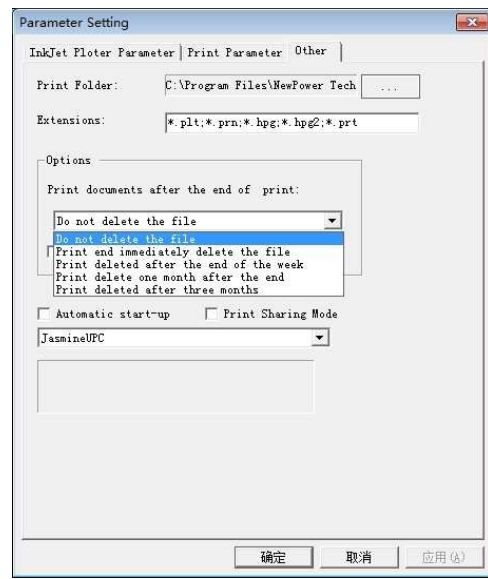
(figure 6)



(figure 7)

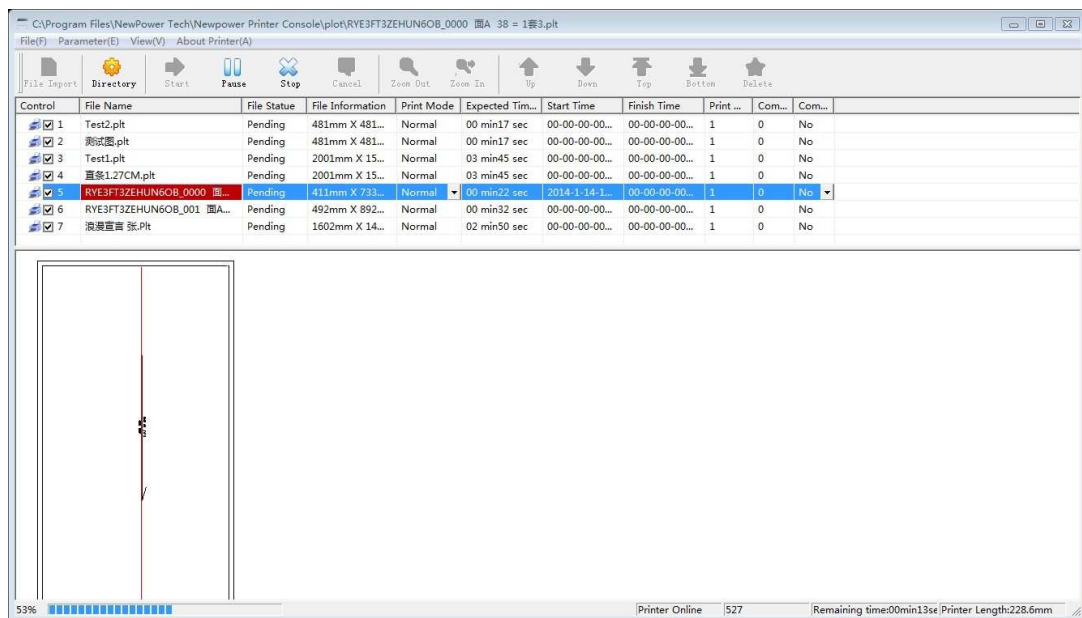


(figure 8)

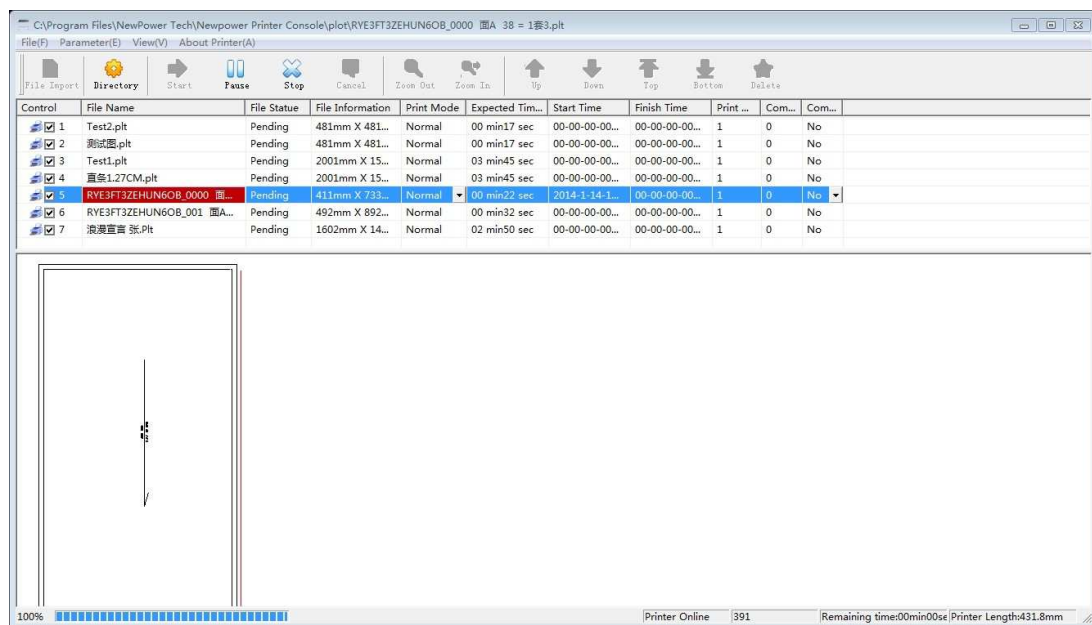


(figure 9)

5、 After drawing: click to choose the file to print, click start printing and sure, plotter will draw this file, and in the process of drawing the workspace and the status bar will clearly reflect the process of drawing(figure 10. figure 11)。



(figure 10)



(figure 11)